

**A STUDY OF SOME POINTS
IN THE PATHOLOGY OF
CEREBRAL HAEMORRHAGE**

Published @ 2017 Trieste Publishing Pty Ltd

ISBN 9780649440986

A Study of Some Points in the Pathology of Cerebral Haemorrhage by Edward L. Blackburne

Except for use in any review, the reproduction or utilisation of this work in whole or in part in any form by any electronic, mechanical or other means, now known or hereafter invented, including xerography, photocopying and recording, or in any information storage or retrieval system, is forbidden without the permission of the publisher, Trieste Publishing Pty Ltd, PO Box 1576 Collingwood, Victoria 3066 Australia.

All rights reserved.

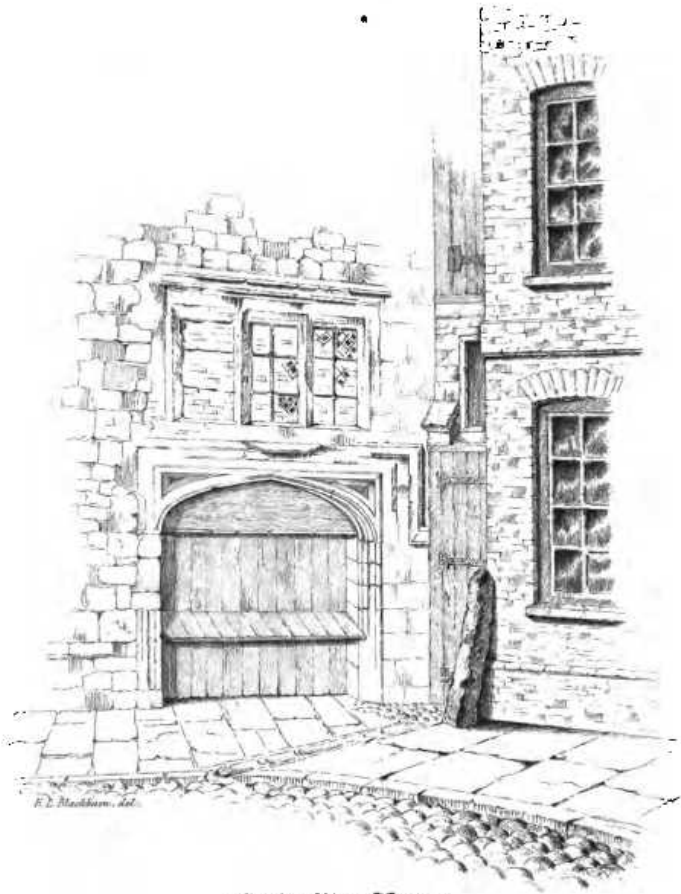
Edited by Trieste Publishing Pty Ltd.
Cover @ 2017

This book is sold subject to the condition that it shall not, by way of trade or otherwise, be lent, re-sold, hired out, or otherwise circulated without the publisher's prior consent in any form or binding or cover other than that in which it is published and without a similar condition including this condition being imposed on the subsequent purchaser.

www.triestepublishing.com

EDWARD L. BLACKBURNE

**A STUDY OF SOME POINTS
IN THE PATHOLOGY OF
CEREBRAL HAEMORRHAGE**



Crosby Place, London.
Doorway in Great St. Helens.

AN
ARCHITECTURAL AND HISTORICAL
ACCOUNT OF
Crosby Place, London,
COMPILED FROM
ORIGINAL AND UNPUBLISHED SOURCES,
WITH AN
APPENDIX OF ILLUSTRATIVE DOCUMENTS
AND FAC-SIMILE
Autographs
OF SEVERAL OF ITS
Ancient Possessors.

BY
EDWARD L. BLACKBURN, ARCHITECT.

LONDON:
JOHN WILLIAMS,
LIBRARY OF ARCHITECTURE AND THE FINE ARTS,
CHARLES STREET, SOHO SQUARE.
MDCCLXXXIV.

T. B. DRURY, PRINTER,
JOHNSON'S COURT, FLEET STREET, LONDON.

PREFACE.

The Author has been induced to offer this Account of Crosby Place to the Public, for the purpose of supplying several facts connected with its history, which previous writers, more capable, though less fortunate than himself, have not had the means of ascertaining or of making known. To the attention and kindness of friends, which he begs thus publicly to acknowledge, he is indebted for the facilities which have stimulated and enabled him to do this: to what

ii.

extent remains to be seen ; time, opportunity and a more able medium might have done more. Such as it is, however, the Author presents his History of Crosby Place, in the hope that, though the additional information contained in it may be but small, yet, being an addition, he shall not have laboured in vain, but have " saved and recovered somewhat from the deluge of time."

10, *LANCASTER PLACE,*

19th of December, 1833.

1. The first part of the document discusses the importance of maintaining accurate records of all transactions and activities. It emphasizes that proper record-keeping is essential for transparency and accountability, particularly in the context of public administration and financial management.

2. The second part of the document outlines the various methods and tools used for data collection and analysis. It highlights the need for standardized procedures to ensure the reliability and validity of the information gathered. This includes the use of surveys, interviews, and statistical software to process and interpret the data.

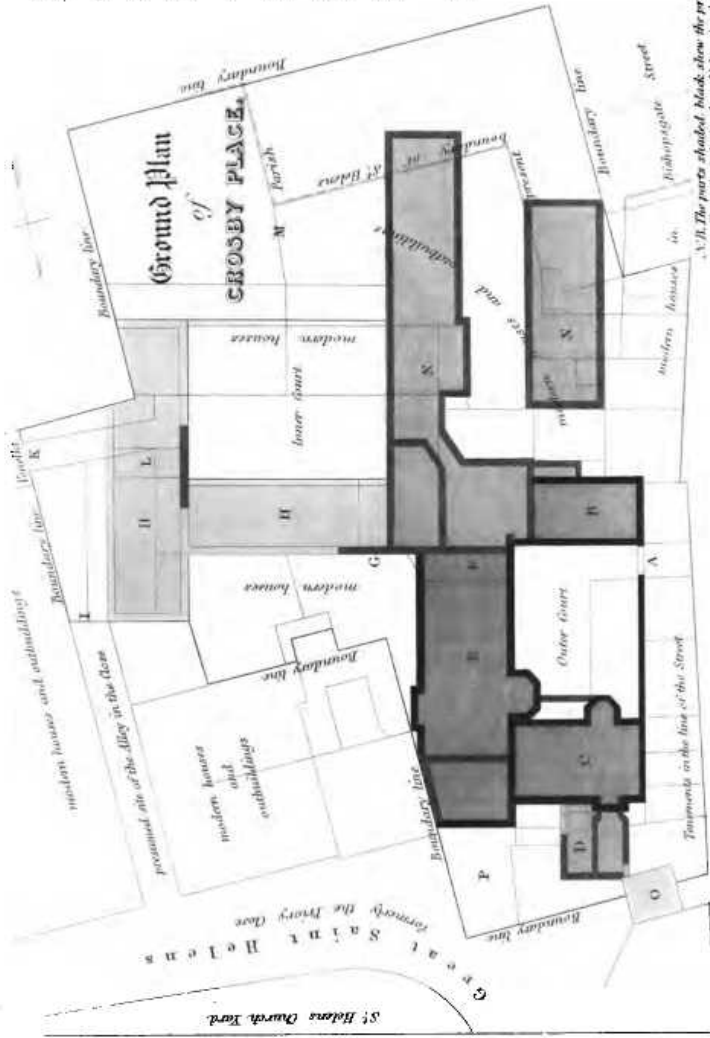
3. The third part of the document focuses on the dissemination and communication of the findings. It stresses the importance of presenting the information in a clear, concise, and accessible manner. This involves the use of reports, presentations, and other communication channels to share the results with the relevant stakeholders and the public.

4. The fourth part of the document discusses the challenges and limitations of the research process. It acknowledges that there are various factors that can affect the quality and accuracy of the data, such as sampling bias, non-response, and data entry errors. It also notes that the interpretation of the results can be subjective and influenced by the researcher's perspective.

5. The fifth part of the document provides a conclusion and recommendations. It summarizes the key findings of the study and offers suggestions for future research and policy-making. It emphasizes the need for continued monitoring and evaluation to ensure that the information remains relevant and useful over time.

REFERENCES.

- A. The Footpath.
- B. Building of the South Wing (approximation uncertain.)
- C. The Great Dining Parlour and Throne Room, over.
- D. Supposed "aisle" of the Staircase leading to the Throne Room.
- E. The Great Hall.
- F. Passages behind the Hall Screen leading to the Inner Court, &c.
- G. Entrance and Passage to the Inner Court.
- H. Presumed Buildings of date within the Cloak.
- I. Gate opening upon the "Alley" within the Cloak.
- K. The Back Gate.
- L. Presumed entrance to the Inner Court from the "Alley".
- M. The Gardens.
- N. Frazar beneath the ground the substructure of the west side of the Inner Court &c.
- O. Site of S. Helena's Bally.
- P. The void piece of Land, or presumed "Measuring".



N.B. The parts shaded black show the present remains above the ground. Those shaded of another lighter tone indicate the remains beneath the ground. That portion against the presumed entrance to the Inner Court from the Back Gate was discovered lately on putting down some Piers in Crosby Sq. to raise pier 1.

BISHOPSGATE STREET

Scale of Feet.