

**CATALOGUE OF THE
SPECIMENS OF THE
AUSTRALIAN LAND SHELLS
IN THE COLLECTION**

Published @ 2017 Trieste Publishing Pty Ltd

ISBN 9780649246984

Catalogue of the specimens of the Australian land shells in the collection by James C. Cox

Except for use in any review, the reproduction or utilisation of this work in whole or in part in any form by any electronic, mechanical or other means, now known or hereafter invented, including xerography, photocopying and recording, or in any information storage or retrieval system, is forbidden without the permission of the publisher, Trieste Publishing Pty Ltd, PO Box 1576 Collingwood, Victoria 3066 Australia.

All rights reserved.

Edited by Trieste Publishing Pty Ltd.
Cover @ 2017

This book is sold subject to the condition that it shall not, by way of trade or otherwise, be lent, re-sold, hired out, or otherwise circulated without the publisher's prior consent in any form or binding or cover other than that in which it is published and without a similar condition including this condition being imposed on the subsequent purchaser.

www.triestepublishing.com

JAMES C. COX

**CATALOGUE OF THE
SPECIMENS OF THE
AUSTRALIAN LAND SHELLS
IN THE COLLECTION**

CATALOGUE
OF
THE SPECIMENS
OF THE
AUSTRALIAN LAND SHELLS
IN
THE COLLECTION
OF
JAMES C. COX, M.D., F.R.C.S. EDIN.

SYDNEY:
PRINTED BY JOHN ALEX. ENGEL.
1864.

P R E F A C E .

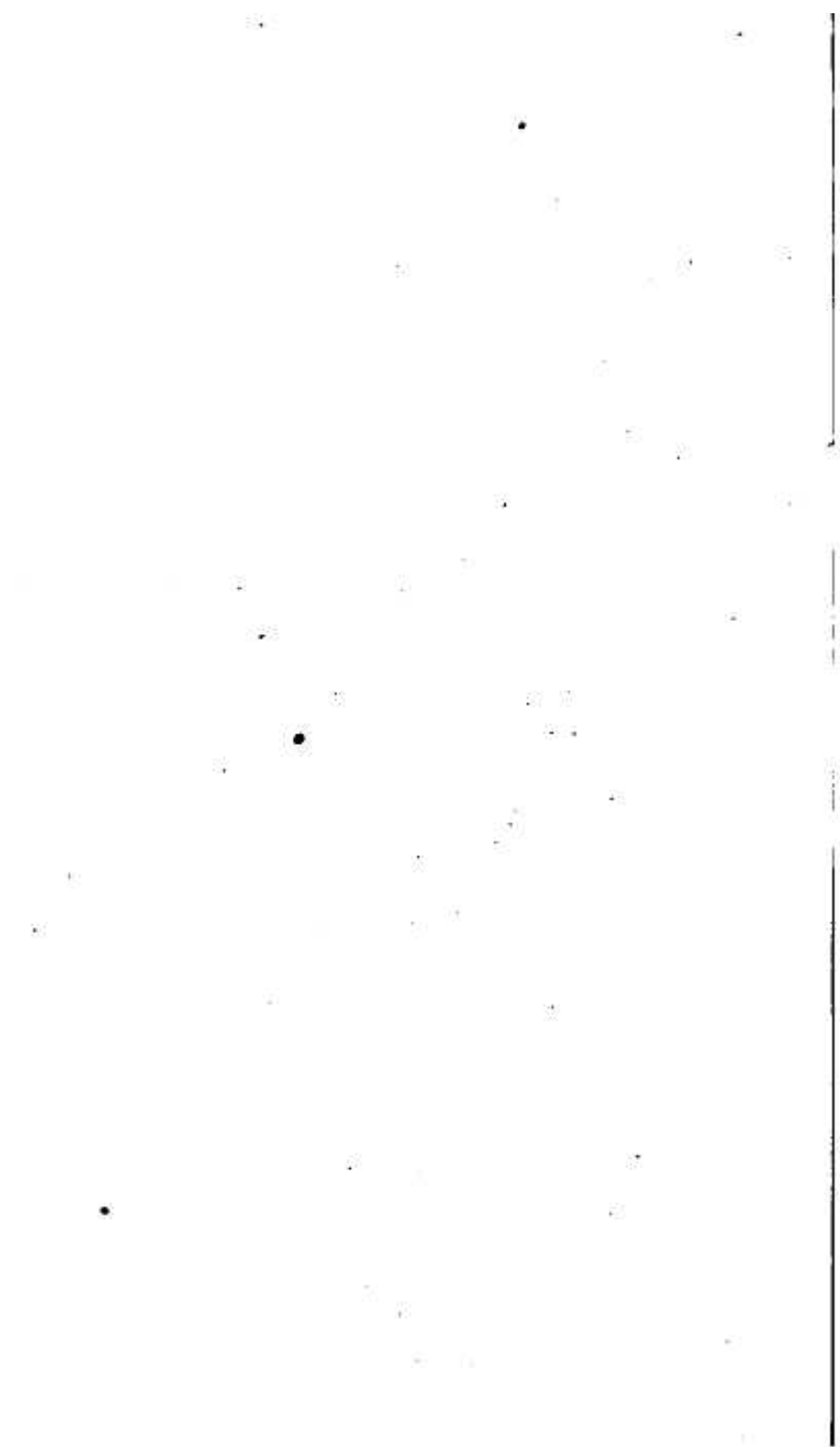
THE principal object of this Catalogue is to give a complete list of all the Genera and Species of Australian Land Shells known to be described, together with descriptions of such new Species as have not hitherto been recorded in the principal Australian collections—and to record correct localities.

The letters M.C. after the species denote the specimens in my own cabinet.

I take this opportunity of acknowledging the services of Mr. John MacGillivray who has given me much valuable information as to the habitat of the various species.

JAMES C. COX.

147, Phillip Street,
SYDNEY.
New South Wales.



CATALOGUE
OF
AUSTRALIAN LAND SHELLS.

Genus HELIX.

1. HELIX COSTULATA. *miki*. M.C.
Cox, Mag. and Annals. Nat. Hist. 1864.

Habitat. Green-oakes, Darling Point, Sydney. *MacGillivray.*

2. HELIX SPLENDIDULA. *Pfr.* M.C.
Pfr. Pro. Zool. Soc. 1845. p. 128.
Reeve, Conc. Icon. Sp. 973.

Habitat. Lizard Island; Blackwood Bay; and Restoration Island. *MacGillivray.*

3. HELIX LESA. *Reeve.* M.C.
Reeve, Conc. Icon. Sp. 1490.

Having lately received specimens of a *Helix* from the Hunter River, in every point corresponding to the description of this shell, I have no hesitation in claiming it as a true Australian species.

4. *HELIX TUCKERL* *Pfr.* M.C.
Pfr. Symbolae, Vol. III. p. 77.
Reeve, Conc. Icon, Sp. 633.
H. strangulata, *Le Guillou*. *H. cyclostomata*, *Homb. et Jacq. Voy. au Pole Sud. Moll. t. 6. f. 1—4.*
 Habitat. N. E. Australia. *Cuming*. Port Curtis, *Cox*.
5. *HELIX BREVIPILO* *Pfr.* M.C.
Pfr. Pro. Zool. Soc. 1849. p. 130.
Reeve, Conc. Icon. Sp. 777.
 Habitat. E. Coast New Holland, *Strange*. Lane Cove.
 Hawkesbury River. Cape York, *Cox*.
6. *HELIX SYDNEYENSIS. mihi.* M.C.
Cox, Pro. Zool. Soc. 1864.
 Habitat. Sydney, N. S. W. *Cox*. Cape York; New-Zealand &c. *MacGillivray*.
 Supposed to be *Helix cellaria* of Müller introduced from Europe. *Cox*.
7. *HELIX LIZARDENSIS. Pfr.* M.C.
Pfr. Pro. Zool. Soc. 1862. p. 269.
 Habitat. Lizard Island, N. E. Coast of Australia.
MacGillivray.
8. *HELIX STRANGEL. Pfr.* M.C.
Pfr. Pro. Zool. Soc. 1848. p. 109.
Reeve, Conc. Icon, Sp. 416.
 Habitat. Brisbane Water, *Stranga*. Lane Cove. Penrith. Sydney. Port Denison, Queensland. *Cox*.
9. *HELIX RAPIDA. Pfr.* M.C.
Pfr. Pro. Zool. Soc. 1853.
Reeve, Conc. Icon, Sp. 1038.
 Habitat. N. E. Coast N. Holland, *Cuming*. New-Zealand, *Reeve*. Aneiteum and Eramanga. *Cox*.

10. *HELIIX SERICATULA*. Pfr. M.C.
Pfr. Pro. Zool. Soc. 1849. p. 127.
Reeve, Conc. Icon. Sp. 812.
 Habitat. Garden, Clark, and Shark Islands, in Port Jackson, &c., Broken Bay. Cox.
11. *HELIIX FRIGATA*. Gould. M.C.
Gould, Expedition Shells, 1851. p. 32.
Reeve, Conc. Icon. Sp. 1033.
 Habitat. Clarence River. Cox.
12. *HELIIX YORKENSIS*. Pfr. M.C.
Pfr. Pro. Zool. Soc. 1854. p. 145.
Reeve, Conc. Icon. Sp. 1372.
 Habitat. Cape York. Cuming.
13. *HELIIX GAERTNERIANA*. Pfr. M.C.
Pfr. Pro. Zool. Soc. 1851. p. 253.
Reeve, Conc. Icon. Sp. 419.
 Habitat. Night Island, N. Australia. MacGillivray.
 I feel convinced that the figures of this species and the one following in *Reeve's Conc. Icon.* should be reversed, fig. 418. representing the shell from *Night Island (Gaertneriana)*, and fig. 419. representing that found at *Port Essington*.
 I am the more certain of this, on account of having received during the last month (*February 1864*) from *Mr. McGillivray*, and collected by himself on *Night Island*, a large number of *Helix Gaertneriana*, represented by fig. 418.
14. *HELIIX SUBRUGATA*. Pfr.
Pfr. Pro. Zool. Soc. 1851. p. 259.
 Habitat. Clarence River. Cuming.
15. *HELIIX JERVISIENSIS*. Q. & G. M.C.
Q. and G. Voy. d'Astr. II. t. 10. f. 26—30.
Reeve, Conc. Icon. Sp. 758.
 Habitat. Jervis Bay. Q. and G. Brisbane Water. MacGillivray. Mulgoa. Picton. Lapstone Hill, Windsor. Cox.

This shell I believe only to be a local variety of the *Helix Grayi*.—Further, I believe *Helix lossa*, and *Helix Mastersi, mihi*, only to be intermediate examples and local varieties of *H. Jervisensis* and *H. Grayi*.

16. HELIX GRAYI. *Pfr.* (*Small variety*). M.C.
Pfr. Symbolæ, Vol. III. p. 68.
Pfr. Mon. Hel. Viv. Vol. I. p. 134.
Reeve, Conc. Icon Sp. 755.

Habitat. East coast of Australia. *Voy. Rattlesnake*.
 Botany Bay Swamps. *Cox.*

17. HELIX GRAYI. *Pfr.* (*Large variety*). M.C.
 Habitat. Penrith, Brisbane Water. *MacGillivray.*

18. HELIX GRAYI. *Pfr.* (*Variety of intermediate size*). M.C.

Habitat. Newcastle, Hunter River. *Masters.*

19. HELIX DUPUYANA. *Pfr.* M.C.
Pfr. Ohemnitz, 2nd. Edition t. 124. f. 15—16.
Reeve, Conc. Icon. Sp. 354.

Habitat. Bellenger River, *MacGillivray.* Ash Island,
 Hunter River. *Cox.*

20. HELIX BRIDWILLI. *Pfr.* M.C.
Pfr. Pro. Zool. Soc. 1853.
Reeve, Conc. Icon. Sp. 1034.

Habitat. Upper Mary River, Wide Bay, *Rev. R. L. King.*

[Note.] "*Helix Bridwilli* must be *Bidwilli Pfr.*" See *Pro. Zool. Soc.* 1865, p. 114.

21. HELIX INCHI. *Pfr.* M.C.
Pfr. Pro. Zool. Soc. 1845, p. 126.
Reeve, Conc. Icon. Sp. 356.

Habitat. North Australia. *MacGillivray.* Miriam Vale,
 Port Curtis, and Port Denison. *Cox.*

22. HELIX INCHI. *Pfr.* (*Very large variety*). M.C.
 Habitat. Upper Mary River. *Rev. R. L. King.*