

**THE DERBYSHIRE
TOURIST'S GUIDE AND
TRAVELLING COMPANION**

Published @ 2017 Trieste Publishing Pty Ltd

ISBN 9780649560967

The Derbyshire Tourist's Guide and Travelling Companion by E. Rhodes

Except for use in any review, the reproduction or utilisation of this work in whole or in part in any form by any electronic, mechanical or other means, now known or hereafter invented, including xerography, photocopying and recording, or in any information storage or retrieval system, is forbidden without the permission of the publisher, Trieste Publishing Pty Ltd, PO Box 1576 Collingwood, Victoria 3066 Australia.

All rights reserved.

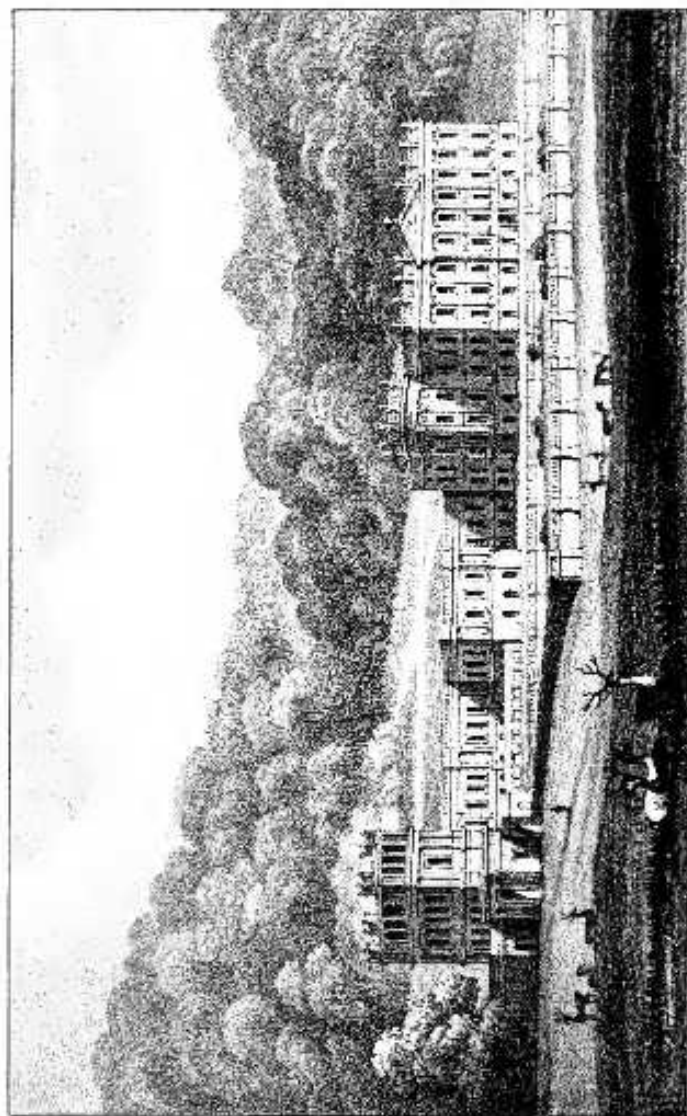
Edited by Trieste Publishing Pty Ltd.
Cover @ 2017

This book is sold subject to the condition that it shall not, by way of trade or otherwise, be lent, re-sold, hired out, or otherwise circulated without the publisher's prior consent in any form or binding or cover other than that in which it is published and without a similar condition including this condition being imposed on the subsequent purchaser.

www.triestepublishing.com

E. RHODES

**THE DERBYSHIRE
TOURIST'S GUIDE AND
TRAVELLING COMPANION**



H. C. N. S.

W. Green, Lith. & Copper.

CHATSWORTH

Published by E. R. King, 5, Abchurch Lane, at the Auctioneers.

E. C. Falweller

THE
DERBYSHIRE TOURIST'S
GUIDE

AND TRAVELLING COMPANION:

INCLUDING

An Account of the various Places generally visited by Strangers

IN THE COUNTY OF DERBY:

TO WHICH IS ADDED,

THE DETAIL OF AN EXCURSION

FROM DOVE-DALE TO ILAM HALL, AND ALTON TOWERS,

BY E. RHODES,

AUTHOR OF "PEAK SCENERY," &c.

LONDON:

H. GROOMBRIDGE, FANYER ALLEY, PATERNOSTER ROW;
AND RIDGE AND JACKSON, SHEFFIELD;

SOLD ALSO BY MRS. MAWE AND MR. VALLANCE, MATLOCK; MR.
MOORE AND MESSRS. BRIGHT AND SONS, BUXTON; MR.
GOODWIN, HAKEWELL; MR. HOON, ASHBOURN;
AND BY THE AUTHOR.

Price 10s.

PRINTED BY G. RIDGE, SHEFFIELD.

DA670
D43R5

TO

SIR FRANCIS CHANTREY, R. A.

THE COMPANION OF MANY OF MY DERBYSHIRE EXCURSIONS,

AND A NATIVE OF THE COUNTY,

THIS VOLUME

IS MOST RESPECTFULLY INSCRIBED, AS A TOKEN OF

AFFECTIONATE REGARD,

BY

THE AUTHOR.

PREFATORY ADDRESS.

THE present unpretending volume is offered to the Derbyshire Traveller, as a medium between those more elaborate works, which have for their object the entire history and topography of this interesting part of the kingdom, and the many minor productions, that are professedly confined to the illustration of one particular district only. The plan appeared to offer some advantages, of which the author hopes he has not neglected to avail himself. In preparing the following pages for publication, it has been his endeavour to compress into a small compass, sufficient information to guide the Tourist to the most interesting places and objects that the northern division of Derbyshire contains. In doing this, he has occasionally borrowed a passage from his more voluminous work on the same subject, whenever it appeared appropriate; but he has rarely resorted to other aid. He has farther to observe, that in his account of the various places introduced into this volume, he has preferred the humble character of a mere Tourist to that of an historian.

In his perambulations, which have been partly pedestrian, he has generally been accompanied by one or

PREFATORY ADDRESS.

more companions ; a circumstance only necessary to mention, for the purpose of accounting for the frequent use of a less offensive pronoun than the egotistical letter *I* ; to which, nevertheless, he has been constrained occasionally to resort, particularly when expressing an individual opinion.

The author takes this opportunity of noticing a very unceremonious piece of plagiarism committed on a former publication of his, to which he respectfully requests the present volume may not be subjected. In 1826, he published an octavo edition of "Peak Scenery," to which was prefixed a series of graphic Road Sketches, an entirely new feature in such a work. These were copied into a Guide Book, published shortly afterwards by a Rev. Gentleman of Matlock, who availed himself of them without either acknowledgment or apology ; a proceeding consonant neither with law nor good manners.

With these few remarks the author commits this volume to the press.

Sheffield, May 24, 1837.

CONTENTS.

SECTION I.—MATLOCK.

| | PAGE. |
|--|-------|
| CHAP. 1.—South approach to Matlock—Entrance into the Dale—Hotels, Inns, and Lodging Houses | 3 |
| CHAP. 2.—Matlock Bath Scenery—Willersley Castle—Wild Cat Tor—Walk to the Village of Matlock—Moot-hall Mine—Sulphate of Barytes | 10 |
| CHAP. 3.—Seven-rakes Mine—Toadstone—Church-Tor—Geological Observations | 21 |
| CHAP. 4.—Morning Scene—Dale Cottage—High Tor—Crystallised Grotto—The Museum—The Caverns | 25 |
| CHAP. 5.—The Baths—Petrifying Wells—Stonnis—Cromford—Mine Accident | 39 |
| CHAP. 6.—Lea—Holloway—Crich—South-Wingfield, Manor House—Hardwick Hall | 48 |

SECTION II.—CHATSWORTH.

| | |
|---|-----|
| CHAP. 1.—Preliminary Remarks—Exterior of Chatsworth—Recent Improvements—Works of Art briefly noticed—Reflections on their influence | 61 |
| CHAP. 2.—Interior of Chatsworth—The Great Hall—New Galleries—Collection of Drawings—Painted Ceillings—New Suite of Apartments—The Library—Dining Room—Sculpture Gallery and Banqueting Hall, &c. | 74 |
| CHAP. 3.—State Apartments—Dilapidated Tapestry—The Spartan Isidas—Carvings in Wood—Landsear's Bolton Abbey in the Olden Time—Statue of Mary Queen of Scots—The Duke's Private Apartments—Queen of Scots at Chatsworth | 101 |