

**TEXAS MEDICAL  
JOURNAL: VOL. XXXII,  
NO. 8, AUSTIN, FEBRUARY,  
1917; PP. 335-379**

Published @ 2017 Trieste Publishing Pty Ltd

ISBN 9780649338962

Texas Medical journal: Vol. XXXII, No. 8, Austin, February, 1917; pp. 335-379 by Various

Except for use in any review, the reproduction or utilisation of this work in whole or in part in any form by any electronic, mechanical or other means, now known or hereafter invented, including xerography, photocopying and recording, or in any information storage or retrieval system, is forbidden without the permission of the publisher, Trieste Publishing Pty Ltd, PO Box 1576 Collingwood, Victoria 3066 Australia.

All rights reserved.

Edited by Trieste Publishing Pty Ltd.  
Cover @ 2017

This book is sold subject to the condition that it shall not, by way of trade or otherwise, be lent, re-sold, hired out, or otherwise circulated without the publisher's prior consent in any form or binding or cover other than that in which it is published and without a similar condition including this condition being imposed on the subsequent purchaser.

[www.triestepublishing.com](http://www.triestepublishing.com)

**VARIOUS**

**TEXAS MEDICAL  
JOURNAL: VOL. XXXII,  
NO. 8, AUSTIN, FEBRUARY,  
1917; PP. 335-379**



# ABORTUSSIS

(MILLIKEN)

Just the prescription you would give your own child.

NO OPIATE TO LOCK THE SECRETIONS

SAFE  
EFFECTIVE—PALATABLE

Each fluid ounce represents:

F. E. Ipecac	- - - - -	2 m.
Cold water infusion of Wild Cherry		
Bark equivalent to F. E.	- - - - -	9 m.
Tr. Tolu	- - - - -	3 m.
F. E. Squills	- - - - -	2 m.
F. E. Thyme	- - - - -	15 m.
Oil Thyme	- - - - -	1 m.
Sodium Bromide	- - - - -	2 grs.

DOSE:—A teaspoonful to a tablespoonful, according to age,  
to be given every hour. In mild cases less frequently.

## INDICATIONS

Pertussis and all conditions where it is desired to allay spasm  
of the respiratory apparatus and increase expectoration.

Your druggist will stock ABORTUSSIS  
for your prescriptions

*Samples will be sent to physicians on request.*

## JNO. T. MILLIKEN & CO.

Pharmaceutical Chemists

SAINT LOUIS, U. S. A.

## LISTERINE

the well-proven and time-tried antiseptic solution, has been prescribed by the Medical Profession with very satisfactory results for 35 years in the treatment of Respiratory Diseases incident to Fall and Winter climatic conditions.

## LISTERINE

one part, hot water three parts, is a useful gargle for sore throat. In mucous catarrhs, Listerine, suitably diluted, is most effectively applied by means of the spray apparatus or douche.

## LISTERINE

is not only a vehicle for specially indicated alteratives, resolvents and astringents, but is itself an efficient, non-irritating antiseptic that is safe, pleasing to the taste and promptly effective.

A treatise on Respiratory Diseases will be forwarded members of the medical profession on request.

**LAMBERT PHARMACAL COMPANY**

TWENTY-FIRST AND LOCUST STREETS, - - - - - ST. LOUIS, MO.

DR. JNO. W. KENNEY, Surgeon

DR. NAT M. KENNEY, Surgeon

## DR. KENNEY'S SANATORIUM

SAN ANTONIO, TEXAS

Telegraph and Telephone connections with all rooms



Located in most desirable part of city. Especially equipped for surgical and obstetrical cases, with a separate department for those addicted to the use of alcohol or drugs. The institution has three operating rooms, a parturition and infants' room; pathological, bacteriological and X-ray laboratories, massage and electrical rooms, and a relay signal system connecting all rooms and departments. The Sanatorium conducts its own ice and refrigerating plant, steam laundry, truck farm and dairy. Any accommodation granted.

Address all communications to

**DR. JNO. W. KENNEY,**

Care of Dr. Kenney's Sanatorium, SAN ANTONIO, TEXAS

# DR. MOODY'S SANITARIUM

## SAN ANTONIO, TEXAS



### For Nervous and Mental Diseases, Drug and Alcohol Addictions, and Nervous Invalids Needing Rest and Recuperation

Established 1908. Strictly ethical. Location delightful summer and winter. Approved diagnostic and therapeutic methods. Modern clinical laboratory. 7 buildings, each with separate lawns, each featuring a small separate sanitarium, affording wholesome restfulness and recreation, in doors and out doors, tactful nursing and homelike comforts. Bath rooms en suite. 100 rooms, large galleries, modern equipments. 15 acres, 350 shade trees, cement walks, play grounds. Surrounded by beautiful parks, Government Post grounds, and Country Club.

G. H. MOODY, M.D., Superintendent  
T. L. MOODY, M.D., Resident Physician

J. A. McINTOSH, M.D., Resident Physician  
MRS. GEORGIE LEE, Matron

## Louisiana Post Graduate School of Medicine

SESSION OF 1916-1917 OPENS OCTOBER, 1916

COURSES ARE GIVEN THROUGHOUT THE YEAR IN

### POST-GRADUATE WORK

Unusual opportunities offered for clinical work, this School having abundance of clinical material at the **Charity Hospital**, **The Illinois Central Hospital**, and **The Anti-Tuberculosis Hospital**.

Clinical diagnosis and treatment is emphasized by didactic and bedside instruction, with the advantage presented of pursuing any of the **SPECIALTIES** under completely organized clinics.

**The Laboratories** are fully equipped for the teaching of Tropical Medicine, Pathology, Vaccine Therapy, etc.

Exceptional opportunities for research work, together with courses in Bacteriology, covering examination of the Blood, Pus, Sputum, Urine, and Gastric Juice. Special courses in the **WASSERMANN REACTION**, and the method of making **AUTOGENOUS VACCINES**.

For further detailed information, address

**DR. J. M. BATCHELOR**, Dean

1210 Maison Blanche, New Orleans, La.

## ECONOMICAL

Economy, although not of major importance, is a consideration not to be overlooked when prescribing a sedative. This is especially true now while the cost of practically all drugs of this class is so abnormally high. The one notable exception is

# NEUROSINE

The Safe Soporific

the present price of which is the same as before the war—25c, 50c and \$1.00 for the 2 oz., 4 oz., and 8 oz., bottles respectively. These figures are from 25% to 200% less than those quoted for other hypnotic—sedative—antispasmodic remedies. Would not such a material saving be appreciated by your patients?

*Dios Chemical Co.*

*St. Louis, Mo.*

## ARLINGTON HEIGHTS SANITARIUM

(INCORPORATED UNDER THE LAWS OF TEXAS)

FOR NERVOUS DISEASES, SELECTED CASES OF MENTAL DISEASES,  
DRUG AND ALCOHOL ADDICTIONS

P. O. Box 978

FORT WORTH TEXAS



**Wilmer L. Allison, M. D.**  
SUPT. AND RESIDENT PHYSICIAN  
For several years first asst Supt. of  
Asylum at San Antonio, Texas

**Bruce Allison, M. D.**  
RESIDENT PHYSICIAN  
Formerly asst Physician at San  
Antonio Asylum

**Jno. S. Turner, M. D.**  
CONSULTING PHYSICIAN  
Late Superintendent of  
Terrell Asylum



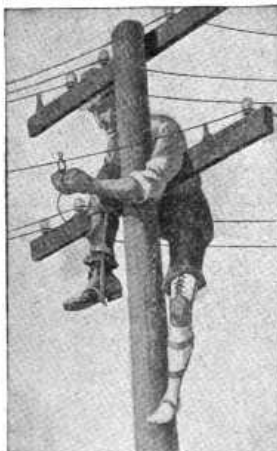
# PAPINE IN PAIN

(BATTLE)

SHOWS THE PRIME PURPOSE OF THIS AGENT. PAPINE (BATTLE) IS A PURIFIED OPIUM PRODUCT. ITS ANALGESIC POWERS ARE EASILY COMPARED TO THOSE OF OPIUM BUT OPIUM'S EVIL EFFECTS ARE REDUCED TO A MINIMUM.

BATTLE & COMPANY CHEMISTS' CORPORATION.  
SAINT LOUIS.

**MEN AND WOMEN** wearing artificial legs of Marks construction, with spring mattress rubber feet, engage in all the occupations known in the line of industry. Nothing too arduous, no places too wet and none too dry, the Marks limbs stand all climates, all temperatures and all hardships.



Alva Young, a wireman, employed by the Edison General Electric Company, New England Division, is a living example of the remarkable degree to which **Marks Artificial Limbs** restore maimed persons to their ability to do things. Young climbs telegraph poles, holds himself on crossbars, hangs and adjusts wires, the same as persons equipped with natural limbs. No matter how stormy the day, whether in swampland, hill or plateau, he is always on the job.

Legs and arms constructed and fitted entirely by measurements are reliable. Over a thousand made by measurement in 1915 by the Marks System, the wearers remaining at home, about as many more were fitted to person.

Forty-seven thousand limbs sold.

Received forty-nine highest awards.

Business established sixty-three years ago.

A Manual of Artificial Limbs, cloth bound, containing 384 pages and 674 illustrations, sent FREE

**A. A. MARKS, 701 Broadway,**

**New York, U. S. A.**

## Austin's New City Hospital

Most modern hospital in Travis County. Two operating rooms fully equipped for operating day or night. Large airy rooms. Nurses training school under the direction of Miss Mattie Moore in connection with the Hospital.

**Dangerous Communicable Diseases Not Accepted for Treatment**

All ethical physicians invited to bring their patients to this hospital. Charges very reasonable. For further particulars, address

**AUSTIN CITY HOSPITAL, - - - Austin, Texas**

# CHLORAZENE

## Dakin's New Antiseptic

This remarkable, chlorine-carrying antiseptic (para-toluene-sodium-sulphochloramide) is one of the great medical discoveries coming out of the European war. It was developed in the French military hospitals by Dr. H. D. Dakin, of the Rockefeller Institute, with the clinical cooperation of Dr. Alexis Carrel.

**Chlorazene** is distinctly superior to the hypochlorites, because as Doctor Dakin says (and Dakin himself devised the hypochlorite solution popularized by Carrel), it is more stable, less irritating, and can be used in greater concentration.

**Chlorazene** is many times as powerful as phenol, yet it is virtually nontoxic and noncaustic. It is supplied both in tablet and powder form and may be kept for weeks and months ready for use at any time.

**Chlorazene** is being used by the Carrel method for treating infected wounds, and in surgical and general hospital work it is meeting with great favor.

Many physicians report extremely gratifying results in the use of **Chlorazene** for

Infections  
Lacerated Wounds  
Ulcers  
Carbuncles  
Eczema

Nasal and Throat Troubles  
Intrauterine Irrigation  
Following Labor  
Douching and Urethral  
Irrigation

Chancroids  
Gonorrhea  
Burns  
Surgical Work  
Pyrexia

and in other conditions requiring antiseptic treatment.

You will be surprised at the remarkably fine results which can be obtained with **Chlorazene**. Try it for yourself. If your druggist is not supplied send your order direct to our home office or branches.

### Packages and Prices

**CHLORAZENE** is supplied in 4.6-grain tablets, in bottles of 100, at 60c. In powder, two special packages for general and hospital use: Hospital Package No. 1, to make 1 gallon of 1-per cent solution, 55c; Hospital Package No. 2, to make 5 gallons of 1-per cent solution, \$2.00. Chlorazene Surgical Cream, per 4-ounce jar, 60c. Prices on larger quantities on request.

Literature on request.

**THE ABBOTT LABORATORIES**  
CHICAGO - NEW YORK

Seattle San Francisco Los Angeles Toronto Bombay



# IODOTONE

- A standardized glycerole of Hydrogen Iodide, each fluid dram representing one grain of Iodine in a palatable form for internal administration. It is a gaseous solution, and will be borne by the stomach for a great length of time without causing gastric disturbance.

Indicated in Asthma, Bronchitis, Eczema, Syphilis, Arteriosclerosis, Rheumatism, etc. It will produce the constitutional effect of Iodine in a shorter time than other Iodine compounds. Dose: one half to two teaspoonfuls in water before meals three times a day.

AN IDEAL FORM OF IODINE FOR INTERNAL USE

SAMPLES AND LITERATURE TO PHYSICIANS

EIMER & AMEND, - - 209-211 Third Avenue, NEW YORK

## Dr. Watson's Sanitarium

FOR THE MEDICAL TREATMENT OF

### GOITER and DISEASES of the DUCTLESS GLANDS

LEIGH F. WATSON, M. D., Medical Director

Office: Marshall Field Annex Building, CHICAGO, ILL.

# PRESCRIBE IT!



RHEUMATISM                      NERVOUS HEADACHE  
NEURALGIA                      GRIPPE, GOUT  
SCIATICA                          MALARIA  
LUMBAGO                          HEAVY COLDS  
TONSILLITIS                      EXCESS OF URIC ACID

*All the Salicylic Acid in Tongaline is made from the natural oil.*

Tongaline Liquid	{	Four-ounce Bottle, 50 Cents
		Eight-ounce Bottle, \$1.00
		Five-pint Bottle, \$6.00

Tongaline Tablets	Tongaline and Lithin Tablets
Tongaline and Quinine Tablets	Ponce Compound Tablets
Box, Fifty Tablets, 50 Cents	
Box, One Hundred Tablets, \$1.00	

SAMPLES ON APPLICATION  
MELLIER DRUG COMPANY, Saint Louis