

**ANNUAL REPORT OF THE BOARD OF
EDUCATION OF THE STATE OF
CONNECTICUT, PRESENTED TO THE
GENERAL ASSEMBLY, MAN SESSION, 1869,
TOGETHER WITH THE ANNUAL REPORT OF
THE SECRETARY OF THE BOARD**

Published @ 2017 Trieste Publishing Pty Ltd

ISBN 9780649690947

Annual Report of the Board of Education of the State of Connecticut, Presented to the General Assembly, Man Session, 1869, Together with the Annual Report of the Secretary of the Board by Connecticut Board of Education

Except for use in any review, the reproduction or utilisation of this work in whole or in part in any form by any electronic, mechanical or other means, now known or hereafter invented, including xerography, photocopying and recording, or in any information storage or retrieval system, is forbidden without the permission of the publisher, Trieste Publishing Pty Ltd, PO Box 1576 Collingwood, Victoria 3066 Australia.

All rights reserved.

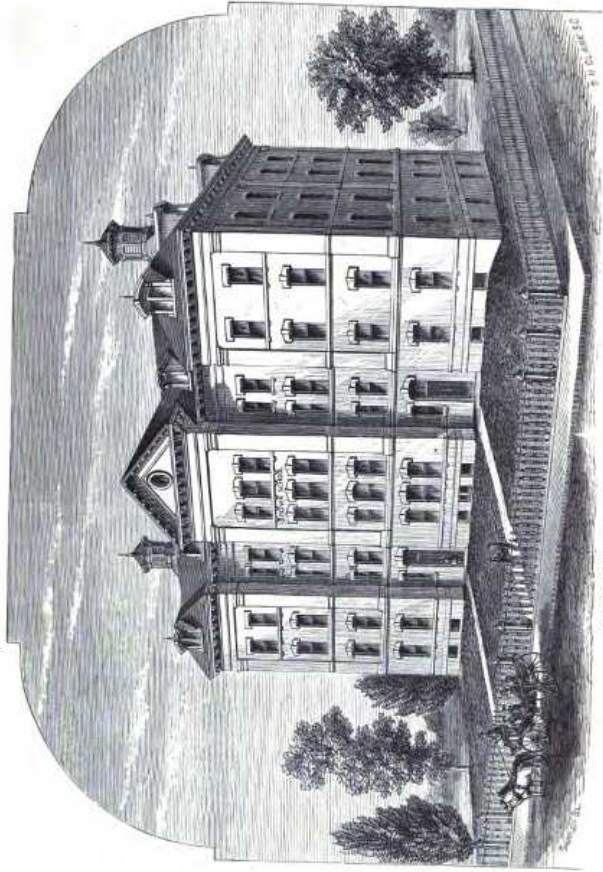
Edited by Trieste Publishing Pty Ltd.
Cover @ 2017

This book is sold subject to the condition that it shall not, by way of trade or otherwise, be lent, re-sold, hired out, or otherwise circulated without the publisher's prior consent in any form or binding or cover other than that in which it is published and without a similar condition including this condition being imposed on the subsequent purchaser.

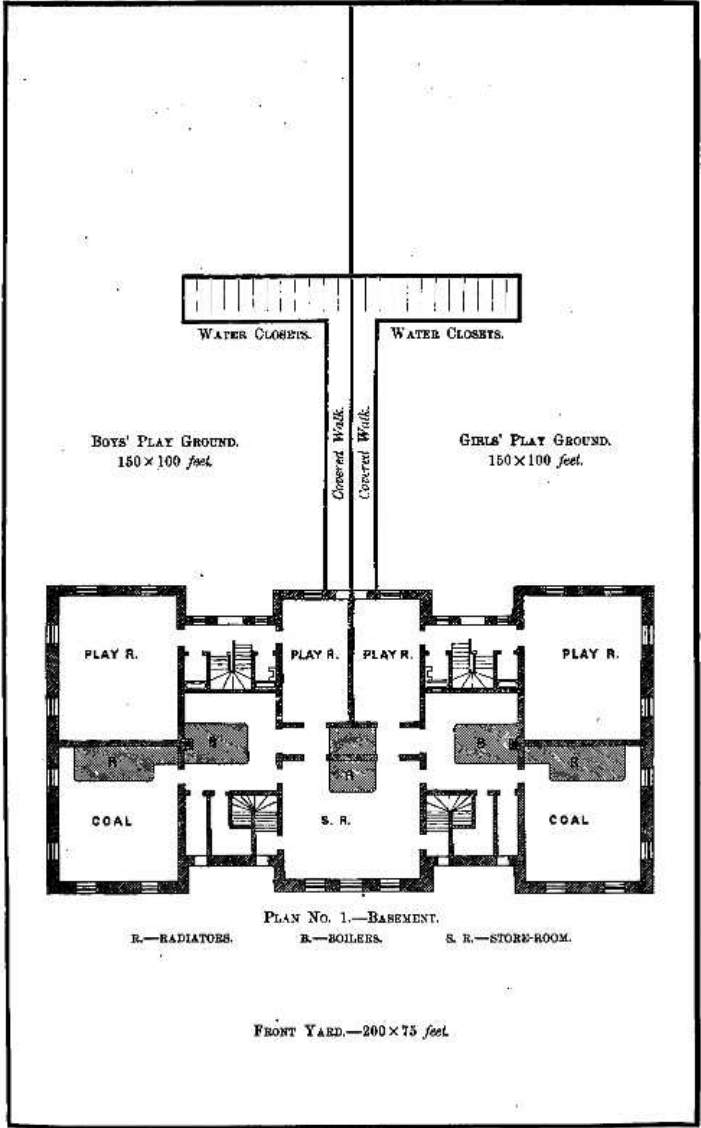
www.triestepublishing.com

CONNECTICUT BOARD OF EDUCATION

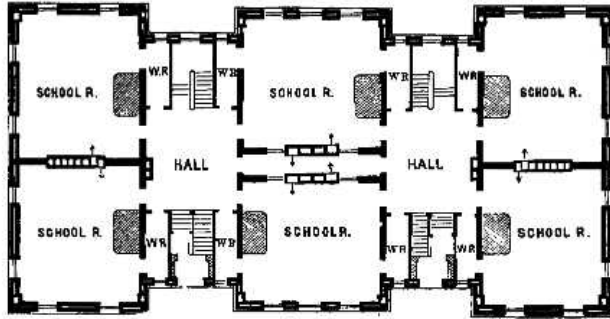
**ANNUAL REPORT OF THE BOARD OF
EDUCATION OF THE STATE OF
CONNECTICUT, PRESENTED TO THE
GENERAL ASSEMBLY, MAN SESSION, 1869,
TOGETHER WITH THE ANNUAL REPORT OF
THE SECRETARY OF THE BOARD**



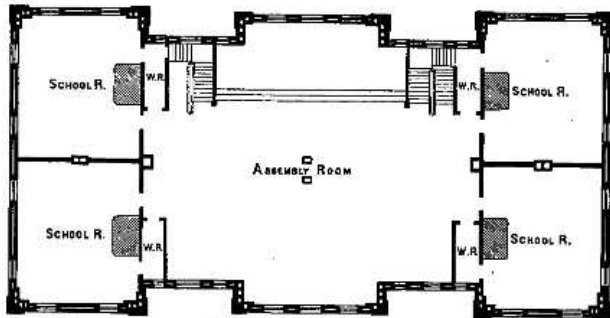
BROWN SCHOOL, Hartford, Conn.



BROWN SCHOOL.



PLAN No. 2.—FIRST, SECOND, AND THIRD FLOORS.
W. R.—WARDROBE.



PLAN No. 3.—FOURTH FLOOR.
W. R.—WARDROBE.

ANNUAL REPORT

OF THE

BOARD OF EDUCATION

OF THE

STATE OF CONNECTICUT,

PRESENTED TO THE

General Assembly, May Session, 1869,

TOGETHER WITH THE

ANNUAL REPORT OF THE SECRETARY OF THE BOARD.

NEW HAVEN:

TUTTLE, MORRHOUSE & TAYLOR, PRINTERS.

1869.

MEMBERS
OF THE
STATE BOARD OF EDUCATION.

FOR THE YEAR 1868-9.

Ex Officio.

HIS EXC. JAMES E. ENGLISH, New Haven.

HIS HONOR EPHRAIM H. HYDE, Stafford.

By Appointment of the General Assembly.

GEORGE M. WOODRUFF, Litchfield,	Term expires, 1869.
THOMAS A. THACHER, New Haven,	" " 1870.
ELISHA CARPENTER, Wethersfield,	" " 1871.
HENRY M. CLEVELAND, Brooklyn,	" " 1872.

FOR THE YEAR 1869-70.

Ex Officio.

HIS EXC. MARSHALL JEWELL, Hartford.

HIS HONOR FRANCIS WAYLAND, New Haven.

By Appointment of the General Assembly.

THOMAS A. THACHER, New Haven,	Term expires, 1870.
ELISHA CARPENTER, Wethersfield,	" " 1871.
HENRY M. CLEVELAND, Brooklyn,	" " 1872.
	" " 1873.

SECRETARY OF THE BOARD,
BIRDSEY G. NORTHROP, New Haven.

OFFICE:
No. 18 CITY HALL, NEW HAVEN.

CONTENTS.

	Page.
REPORT OF THE STATE BOARD OF EDUCATION,	5-9
REPORT OF THE SECRETARY OF THE BOARD,	11-124*
Summary of Statistics,	11
The Free School Law,	18
Free Schools,	18
Evening Schools,	31
Supervision of Schools,	37
The Normal School,	49
Studies for Teachers,	58
Relation of Mental Philosophy to Teaching,	63
The Union of Districts,	73
Spelling,	77
Reading,	79
Drawing,	80
Blackboards,	84
Expulsion from Schools,	85
Higher Studies,	87
Ancient Classics,	87
Premature Graduation,	88
How to make a town beautiful,	89
School Houses,	93
Ventilation,	94
School Gymnastics,	95
Vacations,	97*
Children in Manufacturing Establishments,	97*
Supplementary Schools,	100*
School for Imbeciles, at Lakeville,	100*
Soldiers' Orphan Home at Mansfield,	101*
Fitch's Home for Soldiers' Orphans, at Darien,	103*
Deaf and Dumb Asylum, at Hartford,	103*
State Reform School at Meriden,	104*
Industrial School for Girls,	104*
Sheffield Scientific School,	105*
Private Schools,	108*
Teachers' Institutes,	108*

*. The numbering of pages 97 to 124, inclusive, is *duplicated*, and the first set of these pages is marked with a *.

195653

	Page.
Opinions on School Laws,.....	111*
School Library orders issued in the year,.....	122*
Concluding Remarks,.....	123*
APPENDIX,.....	97-231
Statistical Tables,.....	99-148
Hartford County,.....	103
New Haven ".....	104
New London ".....	106
Fairfield ".....	108
Windham ".....	110
Litchfield ".....	112
Middlesex ".....	114
Tolland ".....	116
SUMMARY,.....	118
Money expended for new School Houses,.....	120
Money expended for School Libraries,.....	121
Taxable property per child in each town,.....	122-125
Per centage of property paid for Public Schools in each town,.....	126-129
Amount of money paid per child for Public Schools in each town,.....	130-133
Per centage of children in Public Schools in each town,.....	134-137
Per centage of average attendance in winter in each town,.....	138-145
Condition of School Houses in each town,.....	146-147
Distribution of Graded Schools among the towns and counties,.....	148
Extracts from School Visitors' Reports,.....	149-206
Towns from whose Reports extracts are herein printed,.....	206
List of School Visitors in every town,.....	207-215
School Laws passed in 1888,.....	216-218
Free School Circular,.....	219-222
Plans of School-Houses,.....	222-227
The "Brown School-House," Hartford,.....	222
The "Skinner School," New Haven,.....	225
The Union District School-House, Windsor Locks,.....	227
Views and plans of the Skinner School,.....	228-30
Residences of Students now in Connecticut Colleges,.....	231
Number of students in professional schools in Connecticut,.....	231
Connecticut students at College in other States,.....	231
Index,.....	260-264