

**THE TOWN OF SHREWSBURY, ITS
LOCATION, ADVANTAGES AND
ATTRactions AS A PLACE OF
RESIDENCE AND FOR BUSINESS**

Published @ 2017 Trieste Publishing Pty Ltd

ISBN 9780649192946

The town of Shrewsbury, its location, advantages and attractions as a place of residence and for business by Various

Except for use in any review, the reproduction or utilisation of this work in whole or in part in any form by any electronic, mechanical or other means, now known or hereafter invented, including xerography, photocopying and recording, or in any information storage or retrieval system, is forbidden without the permission of the publisher, Trieste Publishing Pty Ltd, PO Box 1576 Collingwood, Victoria 3066 Australia.

All rights reserved.

Edited by Trieste Publishing Pty Ltd.
Cover @ 2017

This book is sold subject to the condition that it shall not, by way of trade or otherwise, be lent, re-sold, hired out, or otherwise circulated without the publisher's prior consent in any form or binding or cover other than that in which it is published and without a similar condition including this condition being imposed on the subsequent purchaser.

www.triestepublishing.com

VARIOUS

**THE TOWN OF SHREWSBURY, ITS
LOCATION, ADVANTAGES AND
ATTRACTIONS AS A PLACE OF
RESIDENCE AND FOR BUSINESS**

The Town of
Shrewsbury

MASS
U.S.A.



ITS
LOCATION.
ADVANTAGES.
AND
ATTRactions
AS A PLACE
OF RESIDENCE
AND FOR BUSINESS.

PRICE, 10 CENTS.

SHREWSBURY, MASS.
PUBLISHED BY THE RAILROAD COMMITTEE.
1890.

ESTABLISHED 1860.

Important to Farmers!

J. L. NASON & CO.

Real Estate Brokers,

AUCTIONEERS,

Appraisers and Insurance Agents,

Office, 21 School Street,

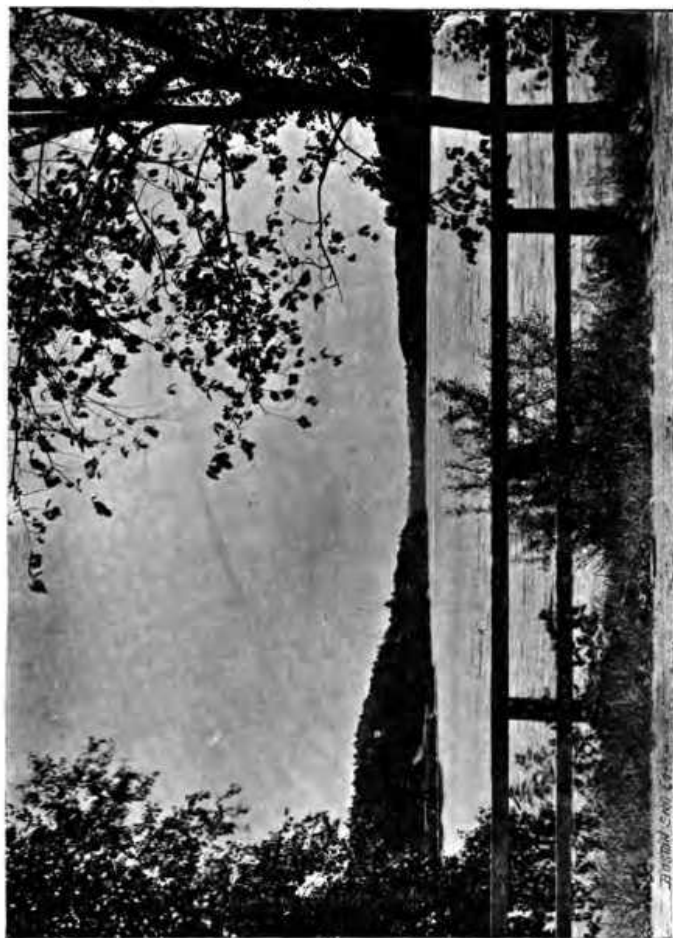
BOSTON, MASS.

Make a specialty of the Sale and Exchange of Farm Property
in all parts of the State.

Our long experience, and extensive sales of Farm Property, enable us to conduct our business in the most satisfactory manner to those employing us, and we trust, by prompt and careful attention to business, to merit a continuance of that liberal patronage which we have received. Our references are to all for whom we have done business.

During the past few months we have sold the following well known Stock Farms in Worcester County. The Muster Hill Farm of 370 acres, at New Braintree; The Geo. Brewster Farm, and the Miles Farm at Westboro; also the Lake View Farm in Norfolk County, 340 acres, and Stock, for \$30,000, and many smaller estates.

No Charge Unless Services are Rendered.



LAKE QUINSIGAMOND.

THE TOWN
OF
SHREWSBURY,

ITS LOCATION,
ADVANTAGES AND ATTRACTIONS

AS A PLACE OF
RESIDENCE AND FOR BUSINESS.



SHREWSBURY, MASS. :
PUBLISHED BY THE RAILROAD COMMITTEE.
1890.

US 13449.8
✓

Statement of the Committee.

The undersigned Committee of Ten, appointed at a public meeting held in Shrewsbury town hall, April 25th, have considered the advantages of a street railroad from the Lower Village in Shrewsbury, to connect with the Worcester Consolidated Street Railway near the Union Station in Worcester. We are of the opinion that such a railroad is indispensable to the prosperity of Shrewsbury, and that as soon as built a full and fair trial should be made of the cars of the Union Electric Car Co., with the storage battery, similar to those now in successful operation between the towns of Beverly and Danvers.

This railroad can only be built by concentrating all the means available for such a purpose by the town as a corporate body, by those friendly to the project living in Shrewsbury and elsewhere, and by those who may be induced to invest in such a project from sound business considerations. To concentrate all our forces we must make known to the outside world our needs and advantages, and take active means to attract the additional population necessary to give immediate, regular, and increasing patronage to a railroad.

Trusting to a proper spirit of co-operation among the citizens of Shrewsbury, the committee have voted to hold one or more public meetings, so that all the citizens may have every opportunity to inform themselves of the details of the work we hope to see accomplished possibly within the coming year.

HERBERT A. MAYNARD, *Chairman.*

CHARLES O. GREEN,	C. MYRON BOUTELLE,
CHARLES S. DAVIS,	HIRAM W. LORING,
DR. FRANKLIN W. BRIGHAM,	SUMNER STOCKWELL,
HERBERT A. COOK,	S. WYMAN HOWE,

CHARLES W. FELT, *Secretary.*

SHREWSBURY, MASS., Nov., 25, 1889.





SHREWSBURY

AND THE LAKE.

THE greater part of Lake Quinsigamond lies within the limits of this town, and hereafter it will claim its share of this famous and beautiful sheet of water. We shall graciously allow and even welcome the good people of Worcester upon our side, but we wish to be remembered in all grateful acknowledgments for improved health and the enjoyment of recreation. We shall insist upon a slight, though to us very important addition to the name. We expect that hereafter all truly good newspapers will say "Lake Quinsigamond, Worcester and Shrewsbury."

The lake, as a summer resort for a few hours, or weeks, or even months, has proved a great boon to those of moderate means, while the number of permanent residents upon its shores is steadily increasing, but the grand feature of the lake, in which Worcester and Shrewsbury are now beginning to share equally, is the summer camp for boys at Wigwam Hill, on the Worcester side, and the summer camp for girls at Tower Hill, on the Shrewsbury side, both being organized under the Worcester Natural History Society.

This society has a great work in hand, and these camps are but branches of its work. Before many years we hope to see the society ensconced within a substantial building of its own and its museums and lecture rooms crowded to repletion with contributions and persons from at least every town in Worcester County, adding materially to the educational force that is rapidly accumulating in the heart of the Commonwealth.

The summer camp for boys, with the experience of five years, seems to be a happy organization of frolic and study sure to captivate every true-hearted boy, and to fill him up with solid and useful ideas during the long summer vacation, when in the city so