

**BELL'S CATHEDRAL SERIES. THE  
CATHEDRAL CHURCH OF  
OXFORD: A DESCRIPTION OF ITS  
FABRIC AND A BRIEF HISTORY OF  
THE EPISCOPAL SEE**

Published @ 2017 Trieste Publishing Pty Ltd

ISBN 9780649500895

Bell's Cathedral Series. The Cathedral Church of Oxford: A Description of Its Fabric and a Brief History of the Episcopal See by Percy Dearmer

Except for use in any review, the reproduction or utilisation of this work in whole or in part in any form by any electronic, mechanical or other means, now known or hereafter invented, including xerography, photocopying and recording, or in any information storage or retrieval system, is forbidden without the permission of the publisher, Trieste Publishing Pty Ltd, PO Box 1576 Collingwood, Victoria 3066 Australia.

All rights reserved.

Edited by Trieste Publishing Pty Ltd.  
Cover @ 2017

This book is sold subject to the condition that it shall not, by way of trade or otherwise, be lent, re-sold, hired out, or otherwise circulated without the publisher's prior consent in any form or binding or cover other than that in which it is published and without a similar condition including this condition being imposed on the subsequent purchaser.

[www.triestepublishing.com](http://www.triestepublishing.com)

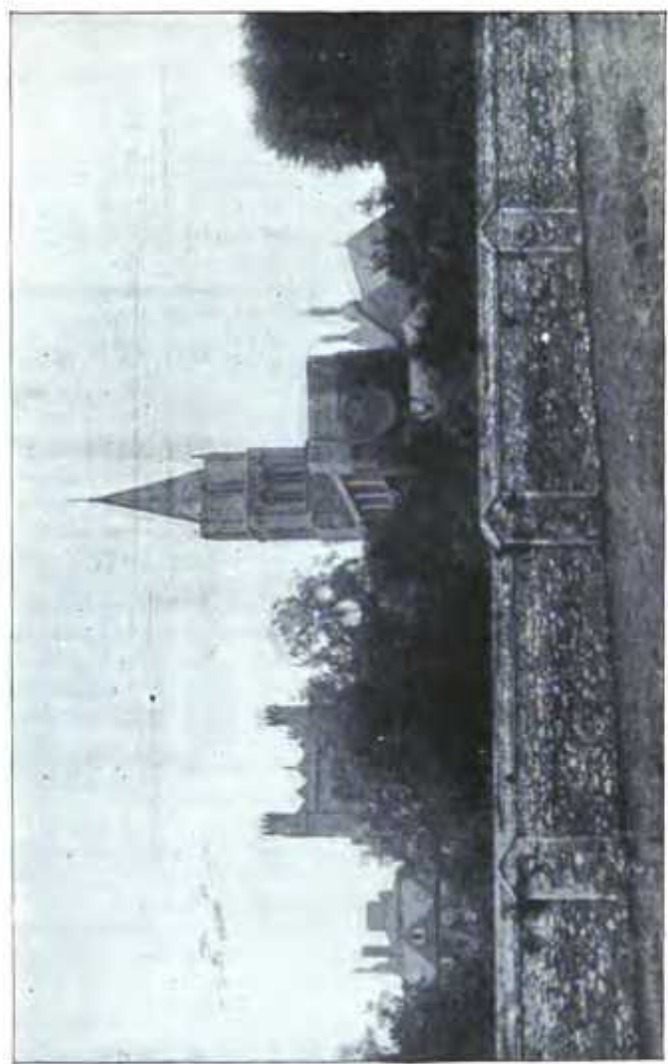
**PERCY DEARMER**

**BELL'S CATHEDRAL SERIES. THE  
CATHEDRAL CHURCH OF  
OXFORD: A DESCRIPTION OF ITS  
FABRIC AND A BRIEF HISTORY OF  
THE EPISCOPAL SEE**



BELL'S CATHEDRAL SERIES:  
EDITED BY GLEESON WHITE  
AND EDWARD F. STRANGE

OXFORD.



CHRIST CHURCH, FROM THE EAST.

THE CATHEDRAL CHURCH OF  
**OXFORD**  
A DESCRIPTION OF ITS FABRIC  
AND A BRIEF HISTORY OF THE  
EPISCOPAL SEE

BY THE REV. PERCY DEARMER, M.A.

WITH THIRTY-FOUR



ILLUSTRATIONS

LONDON GEORGE BELL & SONS 1899

38  
B-12  

---

23

## GENERAL PREFACE.

THIS series of monographs has been planned to supply visitors to the great English Cathedrals with accurate and well illustrated guide books at a popular price. The aim of each writer has been to produce a work compiled with sufficient knowledge and scholarship to be of value to the student of archaeology and history, and yet not too technical in language for the use of an ordinary visitor or tourist.

To specify all the authorities which have been made use of in each case would be difficult and tedious in this place. But amongst the general sources of information which have been almost invariably found useful are:—firstly, the great county histories, the value of which, especially in questions of genealogy and local records, is generally recognised; secondly, the numerous papers by experts which appear from time to time in the transactions of the antiquarian and archaeological societies; thirdly, the important documents made accessible in the series issued by the Master of the Rolls; fourthly, the well-known works of Britton and Willis on the English Cathedrals; and lastly, the very excellent series of Handbooks to the Cathedrals, originated by the late Mr. John Murray, to which the reader may in most cases be referred for fuller detail, especially in reference to the histories of the respective sees.

GLEESON WHITE.

E. F. STRANGE.

*Editors of the Series.*



## AUTHOR'S PREFACE.

FOR one who has learnt the best of what he knows within Christ Church walls it has been very pleasant to gather these notes of the Cathedral's history and architecture. Moreover, I am less remorseful than I might be at adding to the world's overcrowded library, because certain recent discoveries in the Cathedral have thrown the best of the old books out of date, and made it necessary for some one to weave together the older and the later knowledge. My indebtedness, therefore, is not only to former labourers in this field, but especially to the author of these discoveries, Mr J. Park Harrison, who roused my enthusiasm in the old days, and now has most generously helped me with his advice, and allowed me to incorporate in these chapters the substance of his own papers. To these pamphlets I would refer any who wish to go to the fountain-head for the account of the investigations, and especially I may mention two: "The Pre-Norman Date of the Choir and some of the Stone-work of Oxford Cathedral," and the "Account of the Discovery of the Remains of three ApSES at Oxford Cathedral" (Oxford: Frowde, 24 and 23 pp.). I must also express my thanks for the kindness and help of Professor York Powell, and of Mr W. Francis, the senior verger, and to Messrs Carl Norman & Co. of Tunbridge Wells, Mr W. Giles, Mr Park Harrison, and Mr R. Phené Spiers, F.R.I.B.A., for the loan of and permission to reproduce various drawings and photographs.

PERCY DEARMER.

## CONTENTS.

	PAGE
History of the Cathedral . . . . .	3
Description of the Exterior . . . . .	27
Spire and Tower . . . . .	28
On the North Side . . . . .	32
The Saxon Foundations . . . . .	33
Cloister . . . . .	37
Chapter House . . . . .	39
Bell Tower . . . . .	43
Tom Tower . . . . .	44
College Buildings . . . . .	47
Description of the Interior . . . . .	49
Nave . . . . .	51
Monuments of the Nave . . . . .	57
Organ . . . . .	58
Pulpit . . . . .	58
Tower . . . . .	58
Aisles of Nave and Transepts . . . . .	62
Glass in Aisles . . . . .	63
North Transept . . . . .	65
Glass in Transepts . . . . .	67
South Transept . . . . .	67
St. Lucy's Chapel . . . . .	70
Monuments of Transept and Chapel . . . . .	71
Choir . . . . .	72
East End . . . . .	78
Reredos . . . . .	79
High Altar . . . . .	80
South Choir Aisle . . . . .	81
Monuments . . . . .	81
North Choir Aisle . . . . .	83
Shrine of St. Frideswide, . . . . .	84
Lady Chapel . . . . .	88
" Watching Chamber " . . . . .	89
Monuments in Lady Chapel . . . . .	91
Glass in the Aisles . . . . .	97
Latin Chapel . . . . .	102
Glass in Latin Chapel . . . . .	105
History of the Foundation . . . . .	109
St. Frideswide . . . . .	109
The Priory . . . . .	114
College and Cathedral . . . . .	118
The Diocese of Oxford . . . . .	126
Osney . . . . .	126
List of the Bishops . . . . .	128

## ILLUSTRATIONS.

	PAGE
Christ Church from the East . . . . .	<i>Frontispiece</i>
Arms of the See . . . . .	<i>Title</i>
The Roof of the Choir . . . . .	2
The Cathedral at the End of the Seventeenth Century . . . . .	5
Christ Church from the Garden of the Canon of the 2nd Stall, 1857 . . . . .	10
Christ Church in the Eighteenth Century . . . . .	11
The Tower and Spire . . . . .	29
Early Saxon Arches . . . . .	33
Plan of recently excavated Saxon Arches . . . . .	34
Conjectural Plan of Early Saxon Church . . . . .	35
Doorway of Chapter-House . . . . .	39
Corbel in Chapter-House . . . . .	40
Boss in Chapter-House . . . . .	41
Choir, from the Old Cemetery . . . . .	42
Tom Tower . . . . .	44
Western Entrance and Bell Tower . . . . .	45
Plan . . . . .	52
Early English Moulding . . . . .	54
Nave and Choir, looking East . . . . .	55
Pulpit . . . . .	58
Choir and Nave, looking West . . . . .	59
From the North Transept . . . . .	66
Clerestory Window in the South Transept . . . . .	68
Third Capital of the Choir . . . . .	72
Capitals of the Choir . . . . .	73
Tracery of the Roof . . . . .	77
Lady Montacute's Tomb . . . . .	91
Ornament from a Tomb . . . . .	95
The "St. Cecilia" Window . . . . .	99
Window in the Latin Chapel . . . . .	103
Section of the Interior before the Restorations . . . . .	107
The Exterior in 1857 . . . . .	113
The Interior before the Restorations . . . . .	123
Arms of the College . . . . .	136