

**THE ILLINOIS CENTRAL  
FAMILY BOOK: THIS IS  
OUR RAILROAD**

Published @ 2017 Trieste Publishing Pty Ltd

ISBN 9780649738885

The Illinois Central Family Book: This is Our Railroad by Illinois Central Railroad Company

Except for use in any review, the reproduction or utilisation of this work in whole or in part in any form by any electronic, mechanical or other means, now known or hereafter invented, including xerography, photocopying and recording, or in any information storage or retrieval system, is forbidden without the permission of the publisher, Trieste Publishing Pty Ltd, PO Box 1576 Collingwood, Victoria 3066 Australia.

All rights reserved.

Edited by Trieste Publishing Pty Ltd.  
Cover @ 2017

This book is sold subject to the condition that it shall not, by way of trade or otherwise, be lent, re-sold, hired out, or otherwise circulated without the publisher's prior consent in any form or binding or cover other than that in which it is published and without a similar condition including this condition being imposed on the subsequent purchaser.

[www.triestepublishing.com](http://www.triestepublishing.com)

**ILLINOIS CENTRAL RAILROAD COMPANY**

**THE ILLINOIS CENTRAL  
FAMILY BOOK: THIS IS  
OUR RAILROAD**

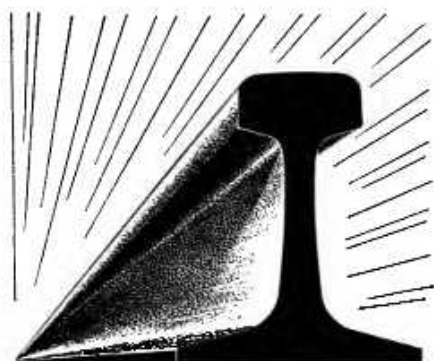




*This is*  
**OUR**  
**RAILROAD**

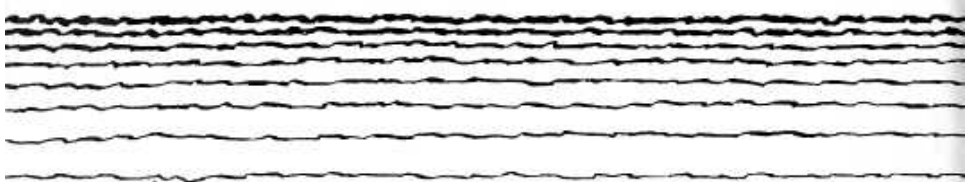
**THE ILLINOIS CENTRAL  
FAMILY BOOK**

ILLINOIS HISTORICAL SURVEY



**We must have railroads in and for America—solvent railroads, strong railroads, manned by alert and respected workmen, directed by progressive management, modernized to fit the needs of American enterprise, operating under sound policies of government, and commanding the confidence of the American people.**

**—Wayne A. Johnston**



*To the members of  
the Illinois Central Family  
whose untiring loyalty has meant  
so much to the success of our  
railroad throughout the greater  
part of a century*

THIS BOOKLET IS  
GRATEFULLY DEDICATED





11/10/22  
H. L. O. T.

# Welcome To THE ILLINOIS CENTRAL

"THIS IS OUR RAILROAD" has been prepared primarily for the newcomers into Illinois Central service; yet, it contains the sort of information all of us like to have for handy reference, no matter whether we have been with the company half a century or half a week.

This booklet may contain statements that are not entirely clear to you, or it may leave some of your questions unanswered. In either event, feel no hesitancy about asking questions; in fact, we urge you to ask them freely. Your first source of information is your immediate supervisor.

Things that new members of the Illinois Central family usually want to know are:

*What are some of the important advantages that employes of the company enjoy?*

*What is my opportunity for advancement with the Illinois Central?*

*What does the Illinois Central expect of me?*

*How is the Illinois Central organized, and what does it do?*

*How and when did the Illinois Central get its start?*

The answers to these and many other questions can be found in this booklet by referring to the table of contents.

To newcomers, I express the hope that this marks the beginning of a long and pleasant business career for you in Illinois Central service. You have cast your lot with a railroad which has a long and excellent record. The Illinois Central pioneered in the development of our great Midwest and the South. It has a sound and enduring pride in almost a century of distinguished service.

If our company is to hold its rightful place among competitive railroads and other forms of transportation, those of us to whom its direction is entrusted must have worthy aims. The Illinois Central's policy outlined on the next page briefly expresses principles which should guide us in the operation of our railroad. May I ask you, as your predecessors have been asked, to accept such a policy as a code of conduct for our work together.

Sincerely,



President

---

## THE ILLINOIS CENTRAL'S POLICY

To provide adequate and dependable transportation, give courteous service, make continued improvements;

To maintain fair and reasonable rates that will stimulate the flow of commerce and cover the necessary costs of operation;

To keep our railroad a good place to work, paying reasonable wages, giving employes fair treatment, providing them with tools to do good work;

To meet our financial obligations in a manner that will maintain credit and attract capital for improvements;

To deserve the confidence and good will of our friends and neighbors.

*What our railroad is doing to carry out these pledges will be disclosed to you in the pages that follow.*

# TABLE OF Contents

	<i>Page</i>
Welcome to the Illinois Central . . . . .	3
The Illinois Central's Policy . . . . .	4

## PART 1

### EMPLOYEE BENEFITS AND WELFARE ACTIVITIES

An Essential Industry . . . . .	9
Stability of Employment . . . . .	9
Promotions . . . . .	9
Payday and Deductions . . . . .	10
Medical, Hospital and Surgical Care . . . . .	10
Group Insurance . . . . .	11
Railroad Retirement and Unemployment Laws . . . . .	12
Employees' Suggestion System . . . . .	12
Employees' Service Clubs . . . . .	13
A Place To Save and Borrow Money . . . . .	14
Everybody Kept Informed . . . . .	14
Our Magazine . . . . .	15
Importance of Rules . . . . .	16
Safety Comes First . . . . .	16
Courtesy . . . . .	17
Good Housekeeping . . . . .	18
Free Transportation . . . . .	18
Vacations . . . . .	18
Recognition of 25, 40 and 50 Years' Service . . . . .	18
Service Bars and Stars . . . . .	19
Labor Organizations . . . . .	19
Change of Name, Address, Etc. . . . .	19
If You Resign . . . . .	19

## PART 2

### ORGANIZATION OF THE ILLINOIS CENTRAL

Executive Department . . . . .	22
Operating Department . . . . .	22
Traffic Department . . . . .	23
Purchasing and Stores Department . . . . .	23
Accounting Department . . . . .	24
Treasury Department . . . . .	24
Secretary . . . . .	24
Law Department . . . . .	25
Engineering Department . . . . .	25
Personnel Department . . . . .	26

## PART 3

### ADDITIONAL INFORMATION ABOUT WHAT THE ILLINOIS CENTRAL IS AND DOES

Map of Illinois Central in 1947 . . . . .	28
The Original Illinois Central . . . . .	28
Main Line of Mid-America . . . . .	28
An East-West, North-South Railroad . . . . .	29
500 Connecting Lines . . . . .	29
Climatic and Geographical Advantages . . . . .	29
Few Steep Grades . . . . .	30
Traffic Advantages . . . . .	30
Pioneered in Traffic Solicitation . . . . .	30
Ranks High in Tonnage and Revenue . . . . .	30
Sources of Freight Revenue . . . . .	30
\$20,000 Invested for Each Job . . . . .	31
Yards . . . . .	31
Chicago Produce Terminal . . . . .	32
Shops . . . . .	32
Steam Locomotives . . . . .	33
Diesel-Electric Locomotives . . . . .	33
Experimenting with Gas Turbines . . . . .	33
Passenger Trains . . . . .	34
Chicago Suburban Service . . . . .	35
Conclusion, by C. R. Young . . . . .	36
The Guy in the Glass . . . . .	37