

**THE BLACK BEAR OF
PENNSYLVANIA
(URSUS AMERICANUS)**

Published @ 2017 Trieste Publishing Pty Ltd

ISBN 9780649074884

The Black Bear of Pennsylvania (*Ursus Americanus*) by Henry W. Shoemaker & John C. French

Except for use in any review, the reproduction or utilisation of this work in whole or in part in any form by any electronic, mechanical or other means, now known or hereafter invented, including xerography, photocopying and recording, or in any information storage or retrieval system, is forbidden without the permission of the publisher, Trieste Publishing Pty Ltd, PO Box 1576 Collingwood, Victoria 3066 Australia.

All rights reserved.

Edited by Trieste Publishing Pty Ltd.
Cover @ 2017

This book is sold subject to the condition that it shall not, by way of trade or otherwise, be lent, re-sold, hired out, or otherwise circulated without the publisher's prior consent in any form or binding or cover other than that in which it is published and without a similar condition including this condition being imposed on the subsequent purchaser.

www.triestepublishing.com

HENRY W. SHOEMAKER & JOHN C. FRENCH

**THE BLACK BEAR OF
PENNSYLVANIA
(URSUS AMERICANUS)**

THE FOUNTAIN



Edwin Grimes and Son, Edwin, Jr.
(Frontispiece)

ANALYSIS OF THE EFFECTS OF THE RECENT ECONOMIC CRISIS ON THE LABOUR MARKET

The recent economic crisis has had a profound impact on the labour market, leading to a significant increase in unemployment and a decline in real wages. This analysis examines the effects of the crisis on the labour market, focusing on the changes in the number of employees, the structure of the labour force, and the impact on different groups of workers.

The total number of employees in the economy has declined significantly since the start of the crisis. This decline is primarily due to a reduction in the number of full-time employees, while the number of part-time employees has increased. This shift in the structure of the labour force is a result of firms' efforts to reduce costs and maintain flexibility in the face of uncertain demand.

The impact of the crisis has been particularly severe for certain groups of workers. Young people, women, and those with lower levels of education and skills have experienced higher rates of unemployment. This is due to a combination of factors, including the fact that these groups are often employed in sectors that have been hit hard by the crisis, such as retail, tourism, and the public sector. Additionally, the crisis has led to a reduction in the number of job opportunities available to these groups, as firms have been forced to cut back on hiring and to lay off workers.

The crisis has also led to a decline in real wages, as firms have been forced to reduce prices and to cut back on wages. This decline in real wages has had a negative impact on the standard of living of many workers, particularly those with lower incomes. The decline in real wages has also led to an increase in the number of workers who are struggling to make ends meet, and to a rise in the number of people who are relying on social welfare benefits.

In conclusion, the recent economic crisis has had a profound impact on the labour market, leading to a significant increase in unemployment and a decline in real wages. This analysis has shown that the impact of the crisis has been particularly severe for certain groups of workers, including young people, women, and those with lower levels of education and skills. The crisis has also led to a shift in the structure of the labour force, with a decline in the number of full-time employees and an increase in the number of part-time employees. These changes in the labour market have had a negative impact on the standard of living of many workers, and have led to an increase in the number of people who are struggling to make ends meet.

THE
PENN
SYLVANIA
SOCIETY

The Black Bear

of Pennsylvania

(*Ursus Americanus*)

Compiled by
Henry W. Shoemaker


With Chapters by
John C. French

Author of "The Passenger Pigeon in Pennsylvania"

"The Bear is capable of some degree of instruction, there are few but have seen it dance in awkward measure upon its hind feet, to the voice or instrument of its leader; and it must be confessed, that the dancer is is often found to be the best performer of the two. I am told that it is first taught to perform in this manner by setting it upon hot plates of iron and then playing to it while in this uneasy situation."—*Oliver Goldsmith*

Altoona

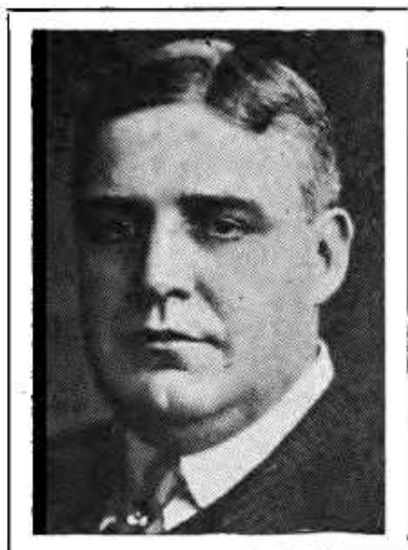
Published by the Times Tribune Company
Copyright, 1921, All Rights Reserved



11
A. 2. 3. 4. 5. 6. 7. 8. 9. 10. 11. 12. 13. 14. 15. 16. 17. 18. 19. 20. 21. 22. 23. 24. 25. 26. 27. 28. 29. 30. 31. 32. 33. 34. 35. 36. 37. 38. 39. 40. 41. 42. 43. 44. 45. 46. 47. 48. 49. 50. 51. 52. 53. 54. 55. 56. 57. 58. 59. 60. 61. 62. 63. 64. 65. 66. 67. 68. 69. 70. 71. 72. 73. 74. 75. 76. 77. 78. 79. 80. 81. 82. 83. 84. 85. 86. 87. 88. 89. 90. 91. 92. 93. 94. 95. 96. 97. 98. 99. 100.

SK

11



To

Hon. William C. Sproul

Governor of Pennsylvania

Lover of All Outdoor Sports and Fair Play
With Whom the Case of *Ursus Americanus* Rests
These Pages Are Respectfully Dedicated



468937

ANALYSIS

The analysis of the data shows a clear trend of increasing values over time. The initial phase shows a steady increase, followed by a period of rapid growth. This is followed by a period of stabilization, and finally a period of decline. The data points are as follows:

Year	Value
1980	10
1981	15
1982	20
1983	25
1984	30
1985	35
1986	40
1987	45
1988	50
1989	55
1990	60
1991	65
1992	70
1993	75
1994	80
1995	85
1996	90
1997	95
1998	100
1999	105
2000	110
2001	115
2002	120
2003	125
2004	130
2005	135
2006	140
2007	145
2008	150
2009	155
2010	160
2011	165
2012	170
2013	175
2014	180
2015	185
2016	190
2017	195
2018	200
2019	205
2020	210
2021	215
2022	220
2023	225
2024	230
2025	235
2026	240
2027	245
2028	250
2029	255
2030	260

Index

Frontispiece	
Introduction	9
The Musquaw or Black Bear	11
A Few Sidelights on Bears	31
Jake Zimmerman's Reminiscences	57
Reminiscences by Henry Wren	62
Mr. Karstetter's Views	62
Bear Stories by E. A. Schwenk	63
Bear Facts from Pennsylvania Newspapers	68
A Queer Bear Trap	68
Says He Saw White Faced Bear in Woods	69
Took Bear for Rock	70
Treed Four Hours by Bears	71
Charles Slutterbeck Kills 265-lb. Bear in Cornfield	72
Boy Alone in Woods Kills 503-lb. Bruin	73
Bear Plays High Jinks	74
Columbia County Boy, 18, Kills 250-lb. Bear	75
First Bear of Season Shot in Seven Moun- tains	75
"Lew" Fosnot's Memories	76
Big Bear Killed by Hunters Near Olean in Jim Jacobs' Old Hunting Country	78
More from Jake Zimmerman	79
"Poody" Lovett's Bear	83
Last Bear in Blue Mountains	84
Linglestown Man Has Hot Fight with Large Bear	87
Bears in Somerset County in Years Past	89
Game Law Revision a Delicate Task	90
Best Bear Story	92