

**TIN-MINING IN
SPAIN PAST
AND PRESENT**

Published @ 2017 Trieste Publishing Pty Ltd

ISBN 9780649018826

Tin-mining in Spain Past and Present by William Copeland Borlase

Except for use in any review, the reproduction or utilisation of this work in whole or in part in any form by any electronic, mechanical or other means, now known or hereafter invented, including xerography, photocopying and recording, or in any information storage or retrieval system, is forbidden without the permission of the publisher, Trieste Publishing Pty Ltd, PO Box 1576 Collingwood, Victoria 3066 Australia.

All rights reserved.

Edited by Trieste Publishing Pty Ltd.
Cover @ 2017

This book is sold subject to the condition that it shall not, by way of trade or otherwise, be lent, re-sold, hired out, or otherwise circulated without the publisher's prior consent in any form or binding or cover other than that in which it is published and without a similar condition including this condition being imposed on the subsequent purchaser.

www.triestepublishing.com

WILLIAM COPELAND BORLASE

**TIN-MINING IN
SPAIN PAST
AND PRESENT**



CORUÑA



PONTEVEDRA

TIN-MINING IN SPAIN

PAST AND PRESENT

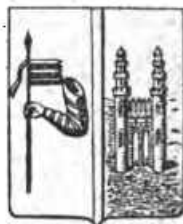
BY

WILLIAM COPELAND BORLASE, M.A.

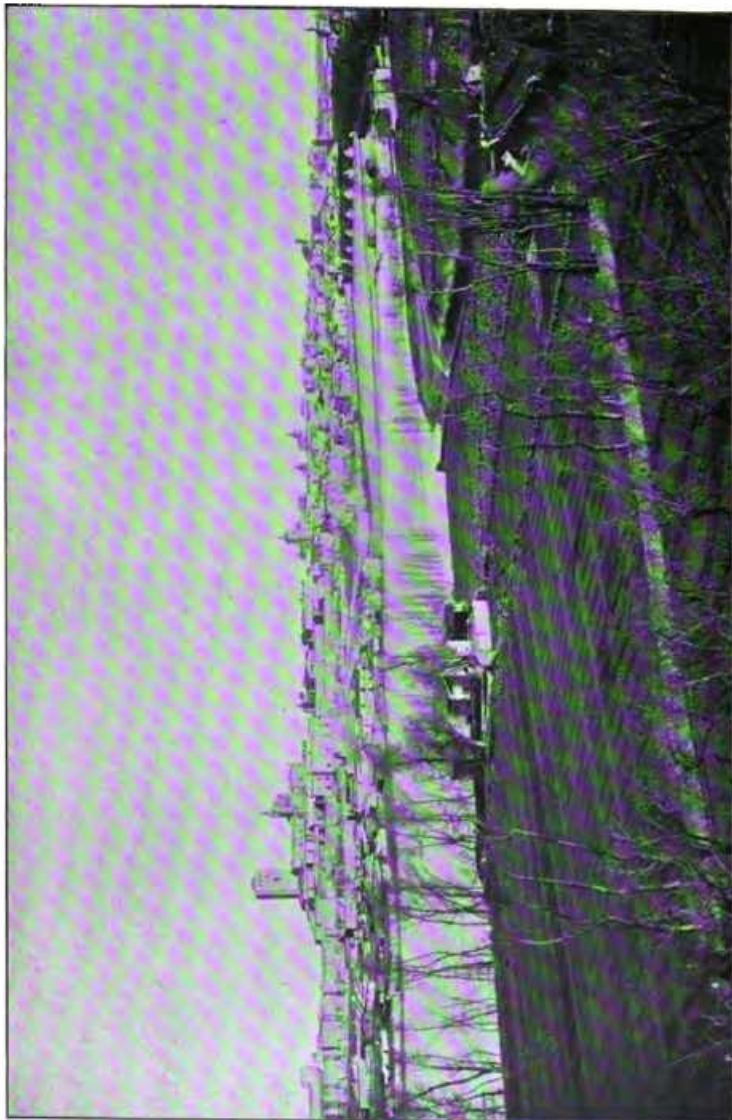


ORENSE

LONDON
PUBLISHED BY EFFINGHAM WILSON,
11 ROYAL EXCHANGE, E.C.



ZAMORA



ZAMORA.

TIN-MINING IN SPAIN

PAST AND PRESENT

BY

WILLIAM COPELAND BORLASE, M.A.

*Parliamentary Secretary of the Local Government Board, 1886 ;
A Deputy-Warden of the Stannaries of Cornwall ; Sometime Hon. Sec.
and Member of the Council of the Royal Geological Society of Cornwall ;
Author of ' Historical Sketch of the Tin-Trade in Cornwall,'
' The Dolmens of Ireland,' etc., etc.*

GENERAL MANAGER OF SEVERAL TIN-RESERVATIONS IN THE PROVINCES
OF CORUÑA AND ZAMORA IN SPAIN, AND TRAS-OS-MONTES IN
PORTUGAL, MENTIONED IN THE FOLLOWING PAGES.

LONDON
PUBLISHED BY EFFINGHAM WILSON,
11 ROYAL EXCHANGE, E.C

LONDON
PRINTED BY THOMAS MORING, AT THE DE LA MORE PRESS
52 HIGH HOLBORN, W.C

5320758

152586 NLS40
APR 24 1911 B64 TO

ROBERT BANKS LAVERY, ESQUIRE,
WHOSE ENTHUSIASTIC
INTEREST IN THE SUBJECT HAS LED HIM
TO GIVE A
PRACTICAL STIMULUS TO THE DEVELOPMENT
OF THE TIN-INDUSTRY
IN THE IBERIAN PENINSULA, THE WRITER
INSCRIBES THE FOLLOWING
PAGES, IN TOKEN OF SINCERE REGARD.

Christmas, 1897.

WINTER -

LIST OF ILLUSTRATIONS.

- FRONTISPIECE - Zamora.
- FACING PAGE 3. Ancient Cross near San Martinho.
- FACING PAGE 11. Granite Gorge on the River Esla at Ricobayo.
- FACING PAGE 12. Two Views of the River Douro near Almaraz.
- FACING PAGE 16. 1 Church of Villadepera, with Ossuary under the Tower.
2 Miners' Barracks at the San Finx Tin-Mine.
- FACING PAGE 24. Five Bronze Implements called *Paalstab Celts*.
- FACING PAGE 26. A Gallego : from Murguia's 'Galicia.'
- AT END - - - Geological Map of the Portion of the Iberian Peninsula which contains the Stanniferous Zone or Tin-Belt.
-
- ON COVER - - The Arms of Coruña, Pontevedra, Orense and Zamora.