

**MISSOURI BOTANICAL
GARDEN. SIXTH
ANNUAL REPORT**

Published @ 2017 Trieste Publishing Pty Ltd

ISBN 9780649243815

Missouri botanical garden. Sixth annual report by Various

Except for use in any review, the reproduction or utilisation of this work in whole or in part in any form by any electronic, mechanical or other means, now known or hereafter invented, including xerography, photocopying and recording, or in any information storage or retrieval system, is forbidden without the permission of the publisher, Trieste Publishing Pty Ltd, PO Box 1576 Collingwood, Victoria 3066 Australia.

All rights reserved.

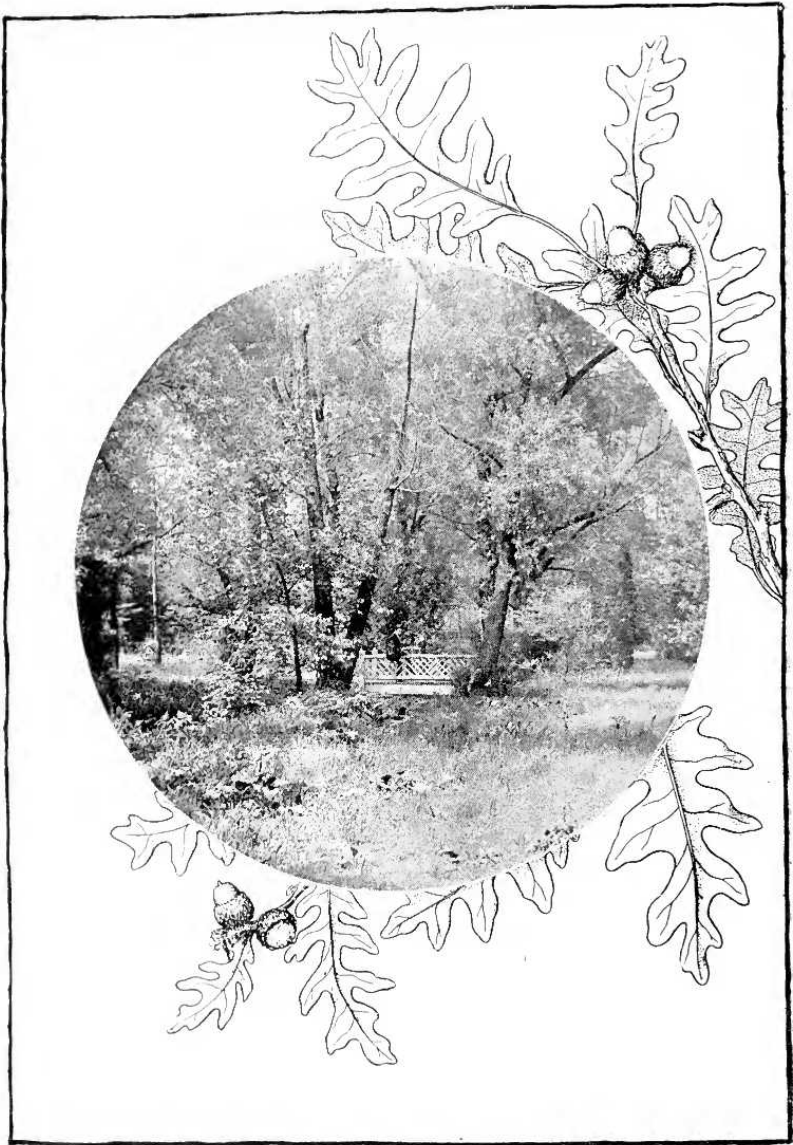
Edited by Trieste Publishing Pty Ltd.
Cover @ 2017

This book is sold subject to the condition that it shall not, by way of trade or otherwise, be lent, re-sold, hired out, or otherwise circulated without the publisher's prior consent in any form or binding or cover other than that in which it is published and without a similar condition including this condition being imposed on the subsequent purchaser.

www.triestepublishing.com

VARIOUS

**MISSOURI BOTANICAL
GARDEN. SIXTH
ANNUAL REPORT**



AMONG THE WILLOWS.

MISSOURI
BOTANICAL GARDEN.
SIXTH ANNUAL REPORT.

254723
18. 5. 31

ST. LOUIS, MO.:
PUBLISHED BY THE BOARD OF TRUSTEES.
1895.

BOARD OF TRUSTEES OF THE MISSOURI
BOTANICAL GARDEN.

President,
RUFUS J. LACKLAND.

Vice-President,
HENRY HITCHCOCK, LL.D.

JOSEPH W. BRANCH.

GEORGE S. DRAKE.

GEORGE J. ENGELMANN, M. D.

JOHN B. JOHNSON, M. D.

DAVID F. KAIME.

GEORGE A. MADILL.

WILLIAM H. H. PETTUS.

JAMES E. YEATMAN.

FREDERICK W. BROCKMAN,
President of the Board of Public
Schools of St. Louis.*

WINFIELD S. CHAPLIN,
Chancellor of Washington Univer-
sity.*

JOHN GREEN, M. D.¹
President of the Academy of Science
of St. Louis.*

DANIEL S. TUTTLE,
Bishop of the Diocese of Missouri.*

CYRUS P. WALBRIDGE,
Mayor of the City of St. Louis.*

A. D. CUNNINGHAM, Secretary.

* *Ex officio.*

¹ Elected President of the Academy of Science January 7th, 1895, in place of Henry S. Pritchett, who had met with the Board for three years prior to that date.

PREFACE.

Under direction of the Board of Trustees, the sixth annual report of the Missouri Botanical Garden is offered to the public. This volume differs from those which preceded it in the omission of the section consisting of "anniversary publications," comprising the annual flower sermon and the proceedings at the two annual banquets instituted by Mr. Shaw, the Director's report containing all that it is considered necessary to state concerning these.

The fifth report was issued April 27th, 1894. Reprints of papers from the present volume were issued in advance of its publication as follows:—

Smith, *Sagittaria* and *Lophotocarpus*, May 24th, 1894;
Trelease, *Leitneria Floridana*, May 30th, 1894.

The reports of the Garden are sent regularly to scientific institutions and journals in exchange for publications or specimens desirable for the library and herbarium of the Garden, and, so far as is possible, reprints of the botanical articles which they contain are sent to botanists to whom these papers are directly useful.

Regular agents for the sale of Garden publications are Dr. A. E. Foote, of Philadelphia, W. Wesley & Son, of London, and R. Friedländer & Sohn, of Berlin.

WILLIAM TRELEASE.

St. Louis, March 1, 1895.

CONTENTS.

	PAGE.
1. REPORTS FOR THE YEAR 1894:—	
<i>a.</i> Report of the Officers of the Board	7
<i>b.</i> Sixth Annual Report of the Director	11
2. SCIENTIFIC PAPERS:—	
<i>a.</i> Revision of the North American Species of <i>Sagittaria</i> and <i>Lophotocarpus</i> —	
<i>By Jared G. Smith</i>	27
<i>b.</i> <i>Leitneria Floridana</i> —	
<i>By William Trelease</i>	65
<i>c.</i> Studies on the Dissemination and Leaf Reflexion of <i>Yucca</i> <i>aloifolia</i> and other Species—	
<i>By Herbert J. Webber</i>	91
<i>d.</i> Notes and Observations on new or little known Species—	
<i>By Jared G. Smith</i>	113
<i>e.</i> Notes on the Mound Flora of Atchison County, Missouri—	
<i>By B. F. Bush</i>	121

LIST OF ILLUSTRATIONS.

Among the Willows	Frontispiece.
<i>Yucca glauca</i> Nutt.	Facing page 7
<i>Colocasia antiquorum</i>	“ “ 11
A Tropical Bed	“ “ 15
Opuntias, in the Cactus House	“ “ 23
<i>Leitneria Floridana</i> , in the Bog	“ “ 65
Plates 1-29, Species of <i>Sagittaria</i>	Following page 64
“ 30-44, <i>Leitneria Floridana</i>	“ “ 90
“ 45-47, <i>Yucca aloifolia</i> , etc.	“ “ 112
“ 48, <i>Sida Palmeri</i> ?	
“ 49, <i>Fugosia Drummondii</i> ,	
“ 50, <i>Sedum Texanum</i> ,	
“ 51, <i>Elytraria</i> and <i>Stenandrium</i> ,	
“ 52, <i>Zephyranthes</i> ,	
“ 53, <i>Sagittaria isoetiformis</i> ,	
“ 54, <i>Eragrostis sporoboloides</i> ,	
“ 55, <i>Eragrostis grandiflora</i> ,	
“ 56, <i>Eragrostis Beyrichii</i>	“ “ 120