

**SHROPSHIRE PARISH
REGISTERS.
DIOCESE OF LICHFIELD.
VOL. XVII., PART 2.**

Published @ 2017 Trieste Publishing Pty Ltd

ISBN 9780649748785

Shropshire Parish registers. Diocese of Lichfield. Vol. XVII., Part 2. by William Phillimore
Watts Phillimore

Except for use in any review, the reproduction or utilisation of this work in whole or in part in any form by any electronic, mechanical or other means, now known or hereafter invented, including xerography, photocopying and recording, or in any information storage or retrieval system, is forbidden without the permission of the publisher, Trieste Publishing Pty Ltd, PO Box 1576 Collingwood, Victoria 3066 Australia.

All rights reserved.

Edited by Trieste Publishing Pty Ltd.
Cover @ 2017

This book is sold subject to the condition that it shall not, by way of trade or otherwise, be lent, re-sold, hired out, or otherwise circulated without the publisher's prior consent in any form or binding or cover other than that in which it is published and without a similar condition including this condition being imposed on the subsequent purchaser.

www.triestepublishing.com

WILLIAM PHILLIMORE WATTS PHILLIMORE

**SHROPSHIRE PARISH
REGISTERS.
DIOCESE OF LICHFIELD.
VOL. XVII., PART 2.**

LICHFIELD,
Vol. XVII., Part 2.

ST. CHAD'S,
SHREWSBURY.

Printed
December, 1916.

44th ISSUE. ONE PART.

ST. CHAD'S SHREWSBURY, VOL. III.,
INDEX PART I.

Shropshire Parish Register Society.

President:

THE EARL OF PLYMOUTH.

Chairman of Council:

SIR OFFLEY WAKEMAN, BART.

Hon. Secretary and Editor:

REV. W. G. D. FLETCHER, M.A., F.S.A., *Oxon Vicarage, Shrewsbury.*

Hon. Financial Secretary:

Lichfield v. 17, pt

Diocese of Lichfield.

St. Chad's

CONTENTS.

VOL. XVII., PART 2.

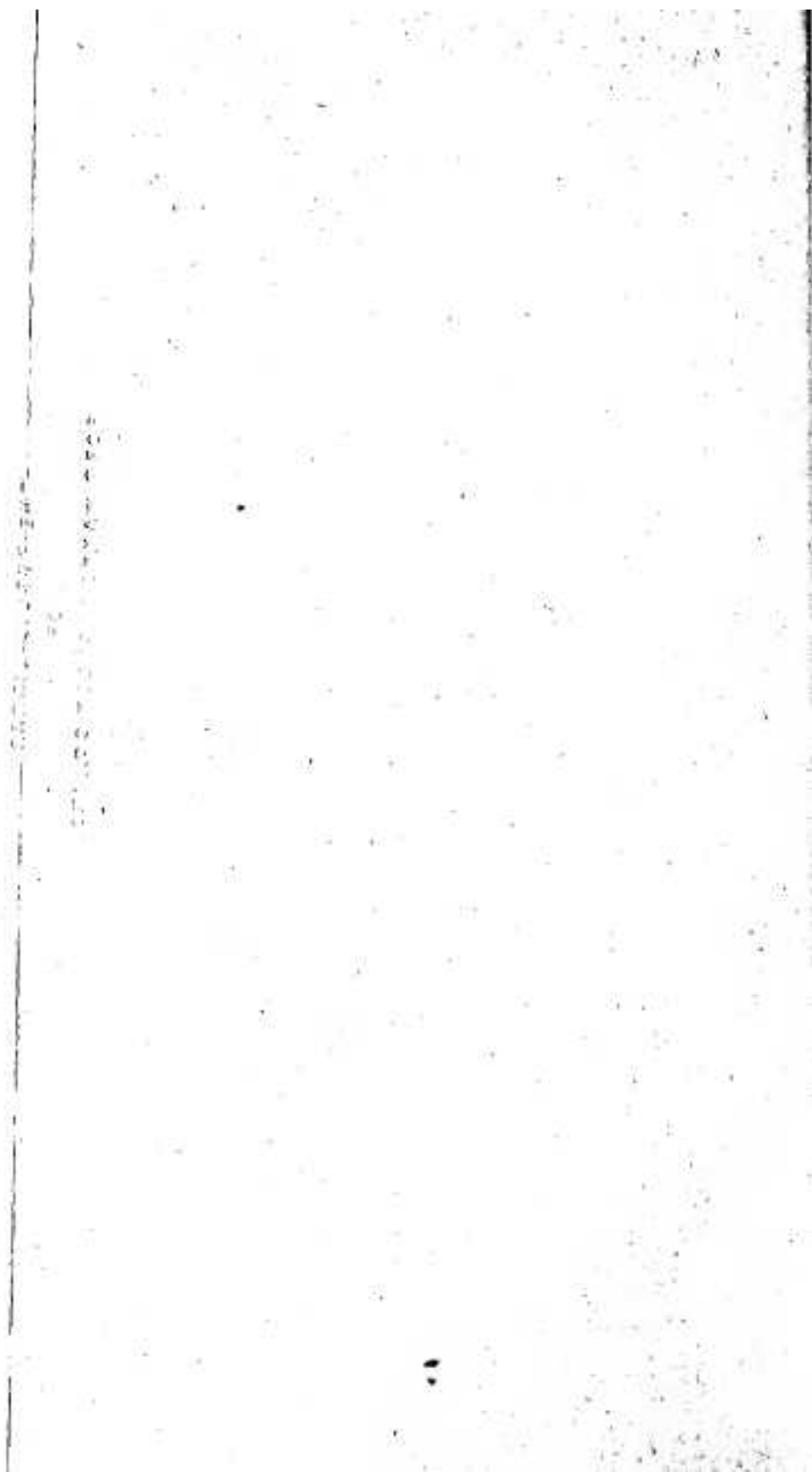
ST. CHAD'S, SHREWSBURY, INDEX, Part 1, Pages i—cxii.

[Volumes XV. and XVI. are completed, and the binding cases are ready.

The remainder of the Index will be issued shortly, and then the whole of the Index will be bound at the end of Vol. XVII.]

NOTE.—All communications respecting the issue of Parts, and the printing and transcription of Registers, must be sent to the Hon. Secretary and Editor.

Attention is especially directed to notices on the last page of the wrapper.



1465372

ST. CHAD'S, SHREWSBURY.

INDEX LOCORUM.

Compiled by T. M. CARPENDALE.

[An asterisk (*) signifies that the place occurs more than once on the page.]

- Abberley (Aberley), (co. War.)
[? Worc.] 1907. See also Haber-
berley.
- Acton (co. Ches.), 698.
- Acton Burnell (Acton Burnel), x,
610*, 612, 642, 677, 685, 698,
702, 1847.
- Acton of the Hill, 831.
- Acton Round, 1790.
- Adderley (Aderley), 661.
- Alberbury (Abberbury, Albur-
bury, Albury, Awberbury, Ob-
berbury), vi, 273, 525, 616,
651, 682, 687, 691, 707, 1075,
1765*, 1767, 1771, 1776, 1777,
1779, 1780, 1784*, 1789, 1791,
1798, 1799, 1802*, 1803, 1805,
1810, 1812, 1813, 1826, 1836,
1838, 1882, 1892, 1905, 1912.
- Albright Hussey, xxii.
- Albrighton (Abretton, Abriton),
209, 262, 659.
- Alderton (Allburton), p. Great
Ness, 744.
- Alfreton (co. Der.), xx.
- Alkmere (Alkere, Alkm., Alkmare,
Alkmear, Alkmeore, Alkmer,
Alkmore, Alkmare, Allmare),
p. St. Chad, 9, 354, 378, 380,
381*, 392, 430, 452, 475, 501,
517, 528, 609, 629, 656, 666,
680, 698, 748, 786, 789*,
795, 875.
- Antwerp Cathedral, ix.
- Arcol (Arcol, Arcoll, Arcol Mag-
na), see High Ercoll.
- Arras, France, xxiii.
- Ashley (co. Heref.), 501.
- Astley, v*, xiv.
- Aston, 33.
- Aston, p. Birmingham, 1779,
1878.
- Atcham (Acha), vi, xxv, 492,
497, 555, 626, 629, 630, 635,
671, 673, 678, 707, 708, 718,
818, 1770, 1771, 1774, 1809,
1811, 1829, 1882, 1896, 1902.
- Audnam, 664.
- Balderton, Hall (co. Nett.), xx.
- Barrow, 1879, 1902.
- Baschurch (Basschurch), 412, 474,
496, 526, 545, 609, 613, 640,
647, 659, 665, 675, 676, 699,
700, 712, 714*, 1075, 1770,
1781, 1801, 1828, 1855, 1863,
1912.
- Bath (co. Somerset), xvii, 893.
- Bathwick (co. Somerset), 1870.
- Battlefield (Battelfield, Battel-
feld), 694, 726.
- Beccles (Beckles), (co. Suff.), 386.
- Bedfordshire, 393.
- Benenden (Bennenden), (co.
Kent), 416.
- Benthall (Bentall), 580, 722.
- Bentley, p. Wolverhampton (co.
Staff.), 384, 694, 726.
- Berrew (Berew, Beriew), (co.
Montg.), 574, 696, 1864.
- Berrington (Berington, Burring-
ton), xxvi, 145, 493, 563, 609,
632, 682, 686, 703, 805, 822,
1769, 1821, 1827, 1833, 1835,
1844, 1881.
- Betton Strange (Beeton, Beetton,
Betton, Little (Lital, Litell,
Littel, Littell, Littill) Betton
(Beton) p. St. Chad (Chaddes),
v, xx*, xxi, xxiii, xxiv, 3, 14,
22, 44, 77, 89, 101, 126, 166,

167, 186, 188, 209, 210, 225,
240, 243, 388, 421, 440, 500,
574, 572, 577, 587, 589, 596,
603, 611, 616, 618*, 619, 625,
643, 670, 682, 717, 808, 822,
826, 827, 836, 839, 843, 870,
871, 872, 890, 892, 893, 1311,
1322, 1325, 1373, 1551, 1590,
1604, 1621, 1698, 1739. Fox,
the, 614.

Bicton (Bickton, Bickton in Mont-
ford, Bicton town, Byckon,
Byckonn, Byckton, Bycton,
Byctone, The Country p. in
St. Chaddes) p. St. Chad, v*,
vi, xii*, xiv*, xix, xxi, 5, 6, 12,
19, 22, 23, 26*, 28, 31*, 34, 42,
49, 54, 64, 67, 74, 83, 103, 105,
106, 120, 128, 135, 143, 150,
160, 176, 182, 198, 199, 206*,
207, 208, 209, 226, 227, 236,
255, 267, 272, 274, 275, 350,
358, 384, 398, 408, 432*, 447,
463, 466, 478, 479, 483, 484,
497, 498, 499, 510, 532, 537,
547*, 548, 557, 558, 561, 563,
564, 579, 581*, 601, 606, 608,
616, 630, 636, 639, 643, 656,
663, 666, 689, 703, 710, 712,
721, 727, 728, 761, 770, 775,
778, 781*, 784, 790, 813, 834,
1055, 1243, 1244*, 1245, 1253,
1254, 1347, 1349*, 1363, 1365,
1412, 1413, 1414, 1415, 1420,
1429*, 1438, 1532, 1533*, 1535*,
1536, 1537, 1540*, 1541*, 1542,
1544*, 1546*, 1548, 1551, 1553,
1555*, 1559, 1560, 1562*, 1563*,
1564, 1565*, 1566, 1567*, 1568*,
1569, 1570, 1571*, 1573*, 1574*,
1575, 1576, 1577*, 1580, 1582,
1585, 1587, 1588, 1589*, 1590*,
1591*, 1592*, 1593*, 1596*,
1597*, 1598*, 1599, 1600*, 1601,
1604*, 1605, 1606, 1607*, 1608*,
1609, 1611*, 1612*, 1614*,
1616*, 1617*, 1620*, 1621*,
1623, 1624*, 1625*, 1626*,
1628*, 1630*, 1631*, 1632, 1633,
1634, 1637, 1638*, 1639, 1641*,
1642, 1643, 1644, 1645*, 1646,
1648, 1649*, 1650, 1652*, 1653*,
1655*, 1656*, 1657, 1658*,
1659, 1660*, 1662*, 1663, 1664*,
1665*, 1666, 1667*, 1669*,
1670*, 1671*, 1672*, 1673*,
1675, 1676*, 1678*, 1679, 1680*,
1681*, 1682*, 1683, 1685*,
1686*, 1687, 1688, 1689*, 1690*,

1691*, 1692, 1693*, 1694, 1695*,
1696, 1697*, 1698*, 1699, 1700*,
1701*, 1702, 1703*, 1704*,
1705*, 1706, 1707, 1708*, 1709*,
1711*, 1712, 1714, 1715*, 1716,
1718*, 1719, 1720, 1721*, 1722,
1724*, 1725*, 1726*, 1727, 1728,
1729*, 1730*, 1731*, 1732,
1734*, 1735*, 1736*, 1737*,
1738, 1740, 1741*, 1742*, 1743*,
1744, 1745*, 1746, 1747, 1748,
1749*, 1750*, 1751*, 1753*,
1754, 1756*, 1757, 1759, 1760,
1761*, 1762*, 1763. Chapel
(Chapelry, Chappel), the, v*,
vi*, viii, xiv*, xxv*, 278, 997.
Church of the Holy Trinity, vi*,
New Church, vi.

Bicton (B, Becton, Bic ; Bickton,
Bicktons, Bicklton, Bicktons,
Bickton's, Byckon, Byckton)
Heath (Heeth, Heth), vi, 31,
32, 43, 93, 153, 182, 193, 222,
257, 274, 396, 403, 431, 434,
442, 446, 478, 525, 531, 532,
531*, 534, 538, 539, 544*, 546,
548, 555, 560*, 562, 563, 564,
565, 566*, 567, 568, 570, 576,
577, 578*, 582*, 584, 586, 587*,
592, 594*, 595, 602*, 603, 604,
605, 609*, 610, 614, 617, 620,
622*, 626, 631, 632, 636*, 637,
639, 640, 644*, 646, 649, 650,
654, 655*, 668, 670, 672*, 673*,
674, 680*, 684, 685*, 686, 687*,
688, 694, 695*, 698, 700, 711,
714, 717, 718*, 719, 720*, 723,
726, 727, 734, 748, 755*, 757,
758, 759, 767, 769*, 771, 781,
783, 794, 795, 800, 806*, 808,
809, 810, 816, 817, 821*, 824,
826, 827*, 832, 836, 838, 840,
852, 853, 856, 861, 863, 866,
873, 882, 1061, 1349, 1368,
1375, 1376*, 1414, 1535, 1537,
1539, 1544, 1548, 1553, 1554*,
1556, 1557, 1558*, 1559, 1560,
1562, 1563*, 1572*, 1575, 1578*,
1579, 1580*, 1584, 1587*, 1592,
1598, 1602, 1606, 1608, 1609,
1611*, 1616, 1617, 1618, 1620,
1627*, 1632*, 1640, 1644*, 1646,
1647*, 1649, 1652, 1653*, 1656*,
1659*, 1664, 1665, 1669, 1673,
1674, 1675*, 1677, 1678, 1684,
1685, 1687, 1688, 1689, 1692*,
1697*, 1703, 1706, 1717, 1719,
1722*, 1724, 1735, 1736, 1740,
1747, 1752. Sun, the, 685.

- Bidford (co. War.), 318.
 Bilston (co. Staff.), 1878.
 Birmingham (Bromingham, Bur-
 mingham), 174, 672, 681, 722,
 1846; St. (S.) Martin p., 1769,
 1824, 1826, 1837, 1848, 1857;
 St. Philip (Phillip, Phillip's)
 p., 1780, 1804*, 1878.
 Bishop's (Bpp., Byshop's) Castle,
 627, 695, 725, 1776, 1814, 1862.
 Bitterley (Bitterly), 694, 822.
 Blackhulse (co. Staff.), 413.
 Bolton-le-Moors (Bolton), (co.
 Lanc.), 1898.
 Boreatton, p. Baschurch, xix,
 xxiii, 1862.
 Brace Meole (Meale, Meol), *see*
 Meole Brace.
 Brecon, St. John the Evangelist
 p., 1764.
 Brewood (co. Staff.), 1881.
 Bridgnorth (Bridgenorth), xix*,
 xxiv, 508, 649, 668, 682, 700,
 825, 1901; St. Mary Magdalene
 (St. Mary) or Low Town, 1821,
 1892; School, xix.
 Brimicham [? Birmingham], 174.
 Bristol (Bristall, Bristol, Bristow,
 Bristowe), 156*, 442, 452, 685;
 St. Austins, 656; St. James, p.,
 644; St. Paul's, p., 1803; St.
 Phillip's, p., 1311; St. Thomas,
 p., 423.
 Brocken, 779.
 Brockton (Sutton Brockton), p.
 Sutton Maddock, 790.
 Bromfield, xix, 1851.
 Bromley, 504.
 Broseley (Brosly), 663, 1772, 1787,
 1825, 1887.
 Broughton, v*, 659, 707.
 Bruid [?], 508.
 Bucknell, 1900.
 Buildwas, 465.
 Bulkington (co. War.), 394.
 Barton-upon-Trent, 1882.
 Bury (co. Lanc.), 1841.
 Battington (co. Montg.), 668,
 719, 1810, 1826, 1904, 1907.
 Calcott, p. Bicton, v.
 Cambridge, Peterhouse, xviii;
 St. John's Coll., xviii*, xix*;
 Trinity Coll., xx; Trinity Hall,
 xviii.
 Cambridge, Co. ———, 376.
 Canterbury (co. Kent), xiv.
 Cardeston (or Cardiston), 1767,
 1773, 1895, 1914.
 Cardington, 648, 654, 655, 1898,
 1900.
 Chaibury (co. Oxf.), 333.
 Chapel Allerton [nr. Leeds], xx.
 Chedle (co. Ches.), 1889.
 Cherington (Chearington), 303.
 Chester, v, xvii.
 Child's Erccall (Childe Arcoll), 673.
 Chilton (Chillton) p. Atcham;
 Fox, the, 810, 815.
 Chirbury (Cherbury, Churbury),
 693, 878, 1835*.
 Chirk (co. Denb.), 1899.
 Church Preen, 662.
 Church Pulverbatch (Pouderbach,
 Pulverbach, Pulverbatch), 658,
 1772, 1811, 1877, 1908.
 Church Stretton, 1874. *See also*
 Stretton.
 Cleobury Mortimer, xix.
 Clive, the, v.
 Clun, Church, the, 330.
 Clunbury, 626, 1836.
 Cockshutt (Cockshut, Cookees
 (Cookees) Sutt), 323, 629, 639.
 Coln (or Colchester), (co. Essex),
 xi.
 Condober (Condo'r, Condouer,
 Cundover, Cundr.), v, vi, xx,
 154, 475, 533, 550, 610, 613,
 627, 634, 651, 663, 677, 679,
 689, 690, 698, 706, 710, 715,
 1764, 1769, 1775*, 1778, 1780,
 1786, 1789, 1792, 1800, 1836,
 1843*, 1854, 1876, 1884, 1889,
 1894, 1903, 1910, 1911.
 Copthorne (Cophorn), 628, 709,
 1532, 1542, 1548, 1632, 1680,
 1693, 1709*, 1725, 1729, 1749*,
 1751, 1753, 1754*, 1756.
 Corringham (co. Essex), 1776.
 Cottenham (co. Camb.), 437.
 Cound, xviii, xxv.
 Coventry (co. War.), 707; Holy
 Trinity Church, xviii.
 Cressage, p. Cound, 697, 1587.
 Cressett, *see* Upton Cressett.
 Crowmeole (Crow Meole, Monk
 Meole), p. St. Chad, v*, vi, xi.
 Dintill (Dintell, Dintle, Dyntell),
 xx*, 5, 14, 143, 326.
 Dolgelly (co. Merion.), 1863.
 Donington, School, xix.

- Dorrington, 894.
 Drayton, *see* Market Drayton.
 Dublin, St. Mary p., 1873.
 Dudley (co. Worc.), 1840, 1883.
 Dudmaston, p. Quatt, xxiii.
 Duffield (co. Der.), 703.
 Dullerl, 702.
 Dunsforth (co. York), 139.
 Dyther, 142.
- East Dereham (co. Norf.), 461.
 Eaton, 1835.
 Eaton Constantine (Conterdine, Cosantine), 462, 511, 597, 642, 670, 694, 1376.
 Edardeston p. Kniton [Knighton], 653.
 Edmond (Edgmont), xx, 587, 643, 677, 1765, 1889.
 Edgton, 493.
 Edmonden, 614.
 Edston [Edstaston], 827.
 Ellesmere (Elesmere, Elismere, Elismere, Elismaire, Elismeer, Elismere, Elmare, Elsemere, Elsmare, Elsmear), 282, 460, 474, 531, 617, 659*, 679, 681, 688, 724, 1025, 1767, 1776, 1797, 1804*, 1808, 1831*, 1835, 1886, 1894, 1904, 1905, 1914.
 Elmley (Elmeley) Castle (co. Worc.), 286.
 Ercall (Ercol, Ercoll, Ercoll Magn, Ercol Magna, Ercol Magny, Erkall), *see* High Ercall.
 Eton (Eaton), nr. Windsor, 436.
 Everton (co. Nott.), 1904.
 Exeter (co. Dev.), xvii.
 Eydon, 620.
 Eyton, xviii, 1806.
 Eyton-on-the-Weald Moors (Eighton of the Wild mores), 614.
- Fetteahall (co. Staff.), 1823.
 Fitz (Fits, Fitts), x, 180, 428, 430, 431, 547, 554, 638, 657, 1765, 1809, 1817.
 Flintshire (Flintsheir), 795.
 Flookburgh (Flookbrough), (co. Lanc.), 324.
 Ford (Foord, Forde), 138, 190, 260, 357, 412, 581, 606, 625, 678, 966, 1765, 1771, 1817, 1912.
 Forden (co. Montg.), 677, 713, 1767.
 Fox Hall (co. Denb.), 798.
 Framfield Place (co. Sussex), xx.
- France, 496.
 Frankin (co. Glos.), 502.
 Frodesley (Frodesly, Frodgly), xxv, 648, 1875.
- Garth, xxiii.
 Geru [?], 1205.
 Ginas, 842.
 Glasnevin (Glassneven), (co. Dub.), 1913.
 Gloucester, xix*.
 Gnosall (Nosell), (co. Staff.), 634.
 Goosehill (Goesell, Goosall, Goosell), p. St. Chad, 1, 152, 549.
 Gorsty bank, the, 569, 782.
 Gosadze, 562.
 Great Hord (co. Essex), xix.
 Great (Greate, Gret) Ness, (Ness Magna, Ness Strange), 610, 659, 663, 665, 672, 675, 676, 701, 702, 717, 1032, 1767, 1768, 1777, 1789, 1798, 1804, 1815, 1835, 1902.
 Grindle, 346.
 Grinsbill (Grinsell), 564, 649.
 Gulsfield (Gilsfield, Gilsfield), (co. Montg.), 551, 761, 1775, 1792.
- Habberley (Abberly, Hab.), 389, 1770, 1838.
 Hadnall, p. Middle, 718, 881, 892.
 Halesowen (Hales Owen), (co. Salop *now* co. Worc.), 1773.
 Hammer (co. Flint), xxi, 254, 497, 672, 768.
 Hanwood (Hanwd.), xviii, xxi, 24, 154, 199, 810, 1771, 1802, 1825, 1874, 1909; Old Turn Pike, 1741.
 Harding, 810*.
 Hardingstone (Hardingson), (co. Northam.), 374.
 Harley, 534, 651, 663, 721.
 Harpsden (co. Oxon), xix.
 Hartbury (Hartpury), (co. Glouc.), 328.
 Hartlepool (Hartlepoole), (co. Dur.), 331.
 Hartshill, p. Stoke-upon-Trent (co. Staff.), xx.
 Hereford (Herifford), xviii, 287, 1817, 1892; St. Nicholas p. 1900.
 High Ercall (Arcal, Arcol, Arcoll, Arcol Magna, Ercall, Ercol, Ercoll, Ercoll Magn., Ercol Magna, Ercol Magny, Erkall,

- High (Hie) Arcol (Arcoll, Ercall, Ercoll), xxv, 134, 477*, 491, 535, 613, 619*, 648, 651, 660*, 665, 670, 675, 676, 677, 695, 696, 707, 718, 720, 722, 1768, 1772, 1840.
- Hinstock, 400.
- Hints (co. Staff.), xix.
- Hinxton (co. Camb.), 338.
- Hodnet (Hodnett, Hodnitt, Hodnot), 455, 584, 653, 660, 663, 675, 683, 700, 707, 1791, 1794, 1851.
- Holgate, 780.
- Holt (co. Denb.), 1813.
- Holywell, 1784.
- Hope Bowdler, 1901.
- Hope-under-Dinmore (co. Hereford), xx.
- Hopesay, 289.
- Hopton, 9.
- Hopton, p. Hodnet (Hodnett), 164.
- Horderley, p. Edgton, 1773.
- Hordley (Hordly), 661, 1786.
- Horton, v, vi; Horton (Horton's lane), xix, 142, 566, 570, 632, 649, 836, 1673, 1697.
- Howles, 709.
- Hyssington (Hussinton), (co. Montg.), 612.
- If son [?], 831.
- Ightfield, xviii.
- Ipswich (co. Suff.) xix.
- Ireland, xxii, 794.
- Isle (Iel, Iell, Ile, Ille, Ilse, Ise, Iyll, Yeill, Yell, Yelle, Yle, Yll) the, p. St. Chad, v, xx*, xxiii, 3, 6, 8, 10, 12, 16, 19, 21, 24, 25, 27, 34, 44, 57, 60, 74, 118, 144, 180, 198, 399, 400, 401, 412, 418, 428, 429, 430, 431, 435, 638, 671, 729, 731, 868, 1752; Chapel, v; Gate (Geate, Yat, Yate), 55, 132, 185, 268, 400, 482, 523, 536, 580, 592, 596, 613, 620, 625, 823; Moated House, v.
- Issington [? Hyssington], 1836.
- Kenley (Kenly, Kennly), 563, 654, 717, 718.
- Kerry (co. Montg.), 1766.
- Kevenyrowen, 395.
- Kidderminster (Kiddermaster), (co. Worc.), 595, 1799, 1808, 1839, 1878.
- Kinlet (Kinlett), 1807.
- Kinnerley (Kenerly, Kinerley, Kinerly, Kinnerly, Kynerley, Kynnerley), 97, 489, 540, 541, 548, 596, 605, 678, 680, 703, 712, 1765, 1780, 1798, 1813, 1832.
- Kinsasly [? Kinnersley], 678.
- Kinton, p. Great Ness (Kwinton, p. Greater Nesse), 653, 884.
- Knaresborough (co. York), 403.
- Knighton (co. Radnor), 1766.
- Knockin (Knucking) Heath, 799.
- Lancashire, 215.
- Landdwyvey (co. Merion.), 1775.
- Langedwell, 505.
- Langley, p. Acton Burnell, 922.
- Lee, 714.
- Leebotwood, 678.
- Lee Brockhurst, 1793.
- Leeds (co. York), Middleton Lodge, xx.
- Lee Hall (Hallis) the, xxi, 168, 1586, 1587.
- Leek (co. Staff.), xx, 1770.
- Lee Leighton, nr. London, 842.
- Leicester, St. Mary, p., 1817, 1823.
- Leicestershire, Church in, 286.
- Leigh (Lee,) (co. Staff.), 713.
- Leighton (Laighton), 501, 648, 694, 721, 725, 1227, 1787, 1858, 1872.
- Leominster (Lemster), (co. Heref.), 627, 707, 866.
- Lichfield (Lichfield, Litchfield), (co. Staff.), iv, v, xvii, xviii*, xx*, xxv, 488*, 535, 563, 703, 787, 789, 969, 1773.
- Lilleshall (Lilutshill), 671, 677.
- Lindridge (co. Worc.), 1831.
- Linley, 825.
- Lith Hall, 430.
- Lithuania (Lithua), 291.
- Little (Lital, Litell, Littell, Littell, Littill), Betton (Beton), see Betton Strange.
- Little Eaton (Eton), v*.
- Little (Little) Ness (Ness P'va.), 479, 716, 1767.
- Liverpool, 1851; St. Anne p., 1876; St. Peter p., 1783; St. Thomas p., 1838.
- Llanagrins (co. Montg.), 1798.
- Llanarmon (co. Denb.), 1804.
- Llandaff (co. Glam.), xix.
- Llandrinio (Landrino, Landrino, Llandrinia), (co. Montg.), 1763, 1781, 1831, 1854.