

**EXPERIMENTS ON
SCHISTOSITY AND
SLATY CLEAVAGE,
BULLETIN NO. 241**

Published @ 2017 Trieste Publishing Pty Ltd

ISBN 9780649313778

Experiments on schistosity and slaty cleavage, Bulletin No. 241 by George F. Becker

Except for use in any review, the reproduction or utilisation of this work in whole or in part in any form by any electronic, mechanical or other means, now known or hereafter invented, including xerography, photocopying and recording, or in any information storage or retrieval system, is forbidden without the permission of the publisher, Trieste Publishing Pty Ltd, PO Box 1576 Collingwood, Victoria 3066 Australia.

All rights reserved.

Edited by Trieste Publishing Pty Ltd.
Cover @ 2017

This book is sold subject to the condition that it shall not, by way of trade or otherwise, be lent, re-sold, hired out, or otherwise circulated without the publisher's prior consent in any form or binding or cover other than that in which it is published and without a similar condition including this condition being imposed on the subsequent purchaser.

www.triestepublishing.com

GEORGE F. BECKER

**EXPERIMENTS ON
SCHISTOSITY AND
SLATY CLEAVAGE,
BULLETIN NO. 241**

Bulletin No. 241

Series { D. Petrography and Mineralogy, 31
E. Chemistry and Physics, 43

DEPARTMENT OF THE INTERIOR
UNITED STATES GEOLOGICAL SURVEY

CHARLES D. WALCOTT, DIRECTOR

EXPERIMENTS

ON

SCHISTOSITY AND SLATY CLEAVAGE

BY

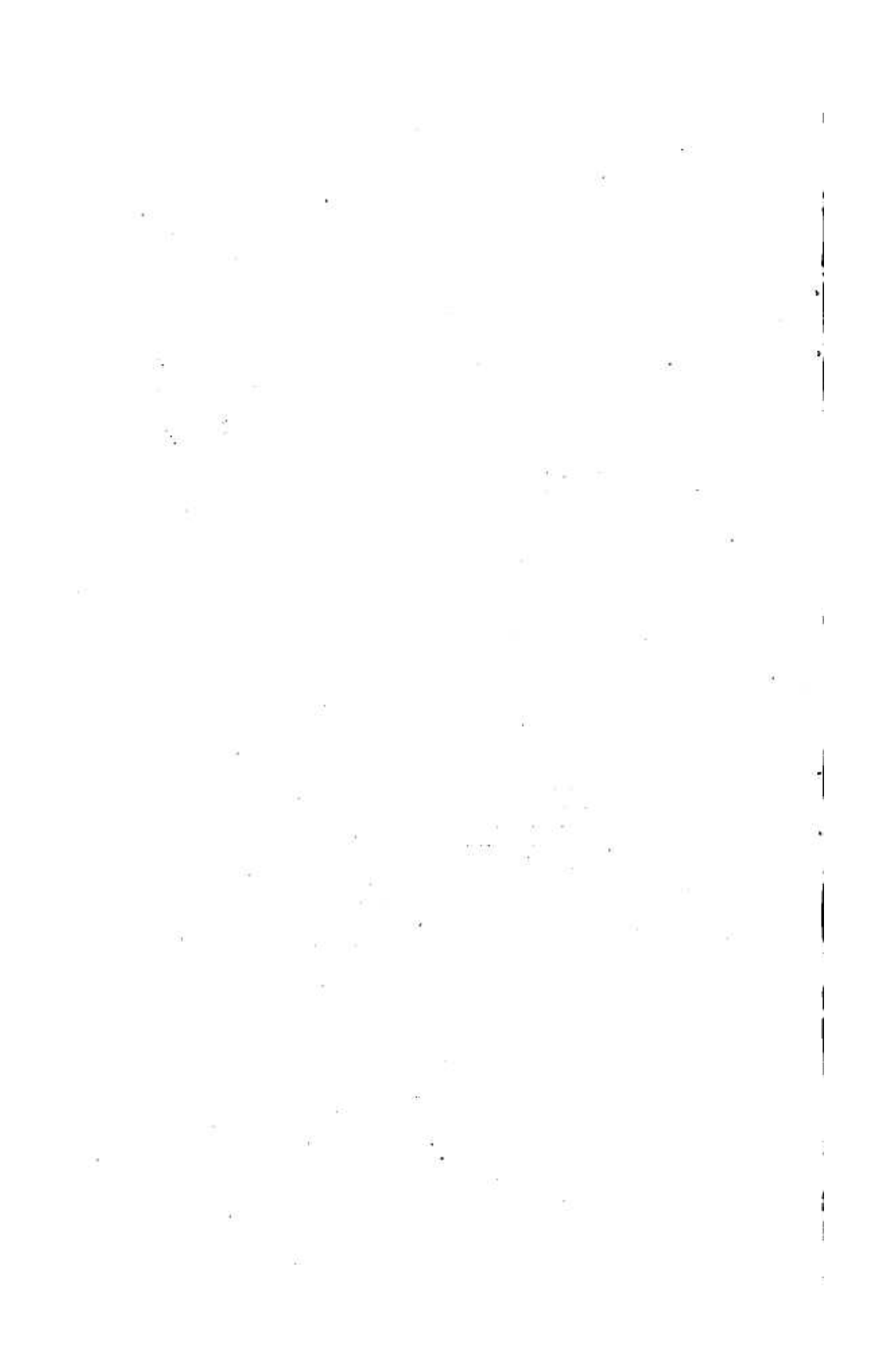
GEORGE F. BECKER



WASHINGTON
GOVERNMENT PRINTING OFFICE
1904

CONTENTS.

	Page.
Letter of transmittal	7
Abundance of fissile rocks	9
Importance of cleavage	10
Theories of cleavage	11
Distinction between Sharpe's theory and mine	12
Means of studying the strain ellipsoid	12
Linear compression	13
Rolling	13
Scission engine	13
Ceresin and its treatment	14
Experiments with clay	15
Other materials tried	16
Strain ellipsoids in ceresin	16
Construction of strain ellipsoids	17
Cleavage on the two theories	17
Cleavage actually found	18
Absence of slip cleavage	19
Significance of bubbles	19
Scission experiments	20
Results for ceresin	20
Results for clay	21
Lessons drawn	21
Mathematical notes	24
Note on the theory of slaty cleavage	24
Note on the inscription of an ellipse in a parallelogram	28
Note on the computation of $\tan \omega$	30
Note on the volume changes in the formation of slate	31
Index	33



ILLUSTRATIONS.

		Page
PLATE I, fig.	1. Scission engine.....	14
II, fig.	2. Strain ellipsoids in ceresin.....	16
	3. Cleft strain ellipsoid in ceresin.....	16
	4. Diagram of distortion in rolling clay.....	16
	5. Diagram to show piercing of cylinders.....	16
	6. Cake of ceresin compressed to two-thirds original height.....	16
	7. Cake of lead compressed to two-thirds original height.....	16
	8. Cake of clay compressed to two-thirds original height, showing peripheral ruptures.....	16
	9. Cake of lead compressed to one-third original height.....	16
III, fig.	10. Three cakes of ceresin compressed to one-third original height, enlarged.....	18
	11. Diagram to show strain ellipsoids in one quadrant of compressed ceresin cake.....	18
	12. Diagram to show cleavage on Sharpe's theory.....	18
	13. Diagram to show cleavage on Becker's theory.....	18
IV, fig.	14. Probable cleavages on Becker's theory.....	20
	15 to 22. Photographs of actual cleavages.....	20
V, fig.	23. Loci of major axes of ellipsoids corresponding to fig. 6.....	22
	24. Block of ceresin faulted by scission.....	22
	25. Block of ceresin showing cleavage due to scission.....	22
	26. Block of ceresin showing cleavage due to double scission.....	22
	27. Block of clay showing cleavage due to scission.....	22
VI, fig.	28. Diagram of slide, but not maximum slide.....	24
	29. Diagram of maximum slide.....	24
	30. Pure shear compounded of two scissions.....	24
	31. Scission and angle of rotation $\mu-\nu$	24
VII, fig.	32. Inscription of ellipse in parallelogram.....	28
	33. Approximate inscription of ellipse in curvilinear quadrilateral.....	28

THE UNIVERSITY OF CHICAGO PRESS
1207 EAST 57TH STREET
CHICAGO, ILLINOIS 60637
TEL: 773/707-3000
FAX: 773/707-3200
WWW.CHICAGO.PRESS.EDU

LETTER OF TRANSMITTAL.

DEPARTMENT OF THE INTERIOR,
UNITED STATES GEOLOGICAL SURVEY,
Washington, D. C., June 4, 1904.

SIR: I have the honor to transmit herewith a paper by myself describing experiments made for the purpose of testing disputed theories of schistosity and slaty cleavage.

Very respectfully,

GEORGE F. BECKER,
*Geologist in Charge Division of
Chemical and Physical Research.*

HON. CHARLES D. WALCOTT,
Director United States Geological Survey.