

**THE TOURIST'S GUIDE
THROUGH THE HAWAIIAN
ISLANDS, DESCRIPTIVE OF
THEIR SCENES AND SCENERY**

Published @ 2017 Trieste Publishing Pty Ltd

ISBN 9780649722747

The Tourist's Guide Through the Hawaiian Islands, Descriptive of Their Scenes and Scenery by
Henry M. Whitney

Except for use in any review, the reproduction or utilisation of this work in whole or in part in any form by any electronic, mechanical or other means, now known or hereafter invented, including xerography, photocopying and recording, or in any information storage or retrieval system, is forbidden without the permission of the publisher, Trieste Publishing Pty Ltd, PO Box 1576 Collingwood, Victoria 3066 Australia.

All rights reserved.

Edited by Trieste Publishing Pty Ltd.
Cover @ 2017

This book is sold subject to the condition that it shall not, by way of trade or otherwise, be lent, re-sold, hired out, or otherwise circulated without the publisher's prior consent in any form or binding or cover other than that in which it is published and without a similar condition including this condition being imposed on the subsequent purchaser.

www.triestepublishing.com

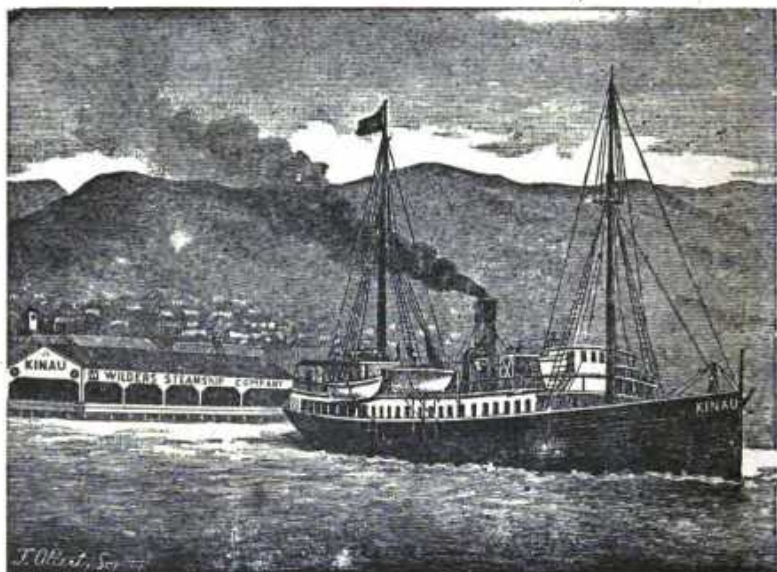
HENRY M. WHITNEY

**THE TOURIST'S GUIDE
THROUGH THE HAWAIIAN
ISLANDS, DESCRIPTIVE OF
THEIR SCENES AND SCENERY**

Wilder's Steamship Co.

DIRECTORS :

C. L. WIGHT..... President.
J. F. HACKFELD..... Vice-President.
S. B. ROSE..... Secretary and Treasurer.
W. F. ALLEN..... Auditor.
W. G. IRWIN, G. C. BROKLEY.



THE POPULAR ROUTE TO THE VOLCANO

Twenty-five (25) Large Staterooms Fitted with Electric Lights
and Electric Bells. First-class Table.

\$50 PAYS ALL THE EXPENSES OF THE TRIP

*Two Days and Three Nights at the Volcano. Eight Hours only from
Hilo to the Volcano without Change of Conveyance.*

This includes ample time for lunch at Oloa in the Heart of the Coffee Belt of the Islands.

All carriage route over a magnificent macadamized road, that has just been completed by the Hawaiian Government at a cost of \$100,000.

Those who contemplate investment in coffee lands will pass through twenty miles of coffee country on this road.

Wilder's Steamship Co.'s "TRIP TO THE * VOLCANO!" Follows the coast from which the view below was taken, for the distance of 80 miles, $\frac{1}{4}$ of a mile from



A COAST SCENE NEAR HILO ON ROUTE OF S. N. KINAU.

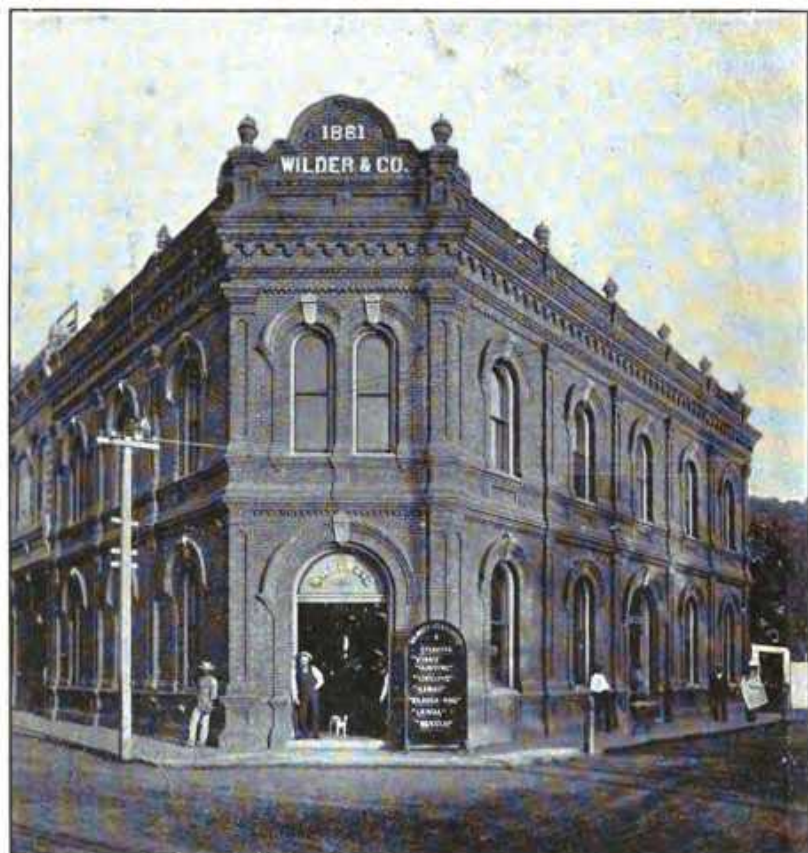
the shore. The carriage route from Hilo traverses * Scenic Route of the World.
forests of tree ferns and other tropical vegetation, interspersed by coffee plantations making this the

W. C. WILDER, PRESIDENT.

S. G. WILDER, SECRETARY.

WILDER & COMPANY, LTD.
IMPORTERS AND DEALERS IN LUMBER AND COAL.

Builders' Hardware, Doors, Sash, Blinds, Paints and Oils, Wall Paper, etc.
HONOLULU, H. I.



KAHULUI RAILROAD COMPANY

KAHULUI, WAILUKU,
SPRECKELSVILLE AND PAIA, MAUI.

G. P. WILDER, President.

S. H. ROSE, Secretary.

Office, **WILDER & CO.**
HARVARD COLLEGE LIBRARY

GIFT OF

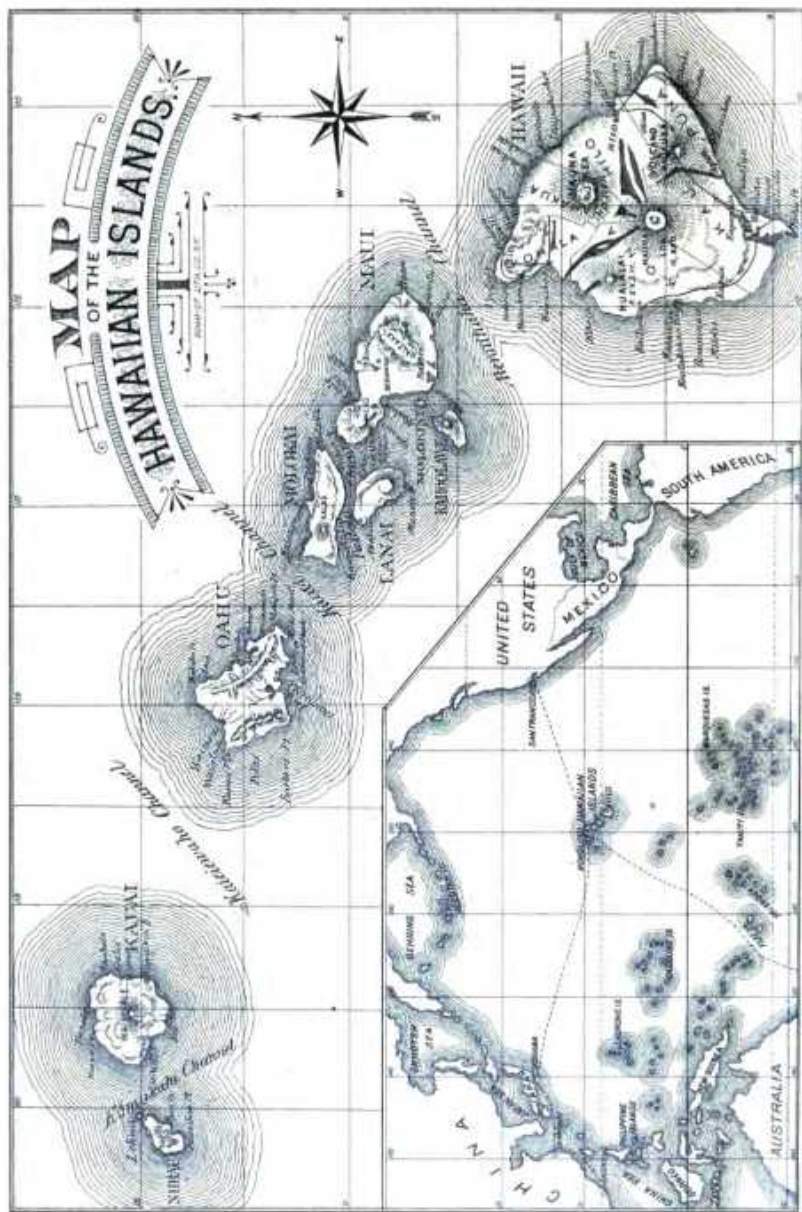
WILLIAM RICHARDS CASTLE, Jr.

FEB 7 1934

HIGH AUTHORITY IN FAVOR OF A CABLE TO HAWAII.

In his Message to Congress in 1888, President Cleveland said:—"In the vast field of oriental commerce now unfolded from over our Pacific borders, no features present stronger recommendations for Congressional action than the establishment of communication by submarine telegraph with Honolulu. The geographic position of the Hawaiian group in relation to our Pacific States, creates a natural interdependency and mutuality of interest which our present treaties were intended to foster, and which make close communication a logical and commercial necessity."

"A cable will certainly one day be laid between the Pacific coast of the United States and Japan," says a recent writer. "The route for a message is at present intolerably long and very expensive. A merchant who has to pay \$5 a word, studies a code-book very carefully and sends just as few words as possible. From San Francisco or any other port the message has to be flashed to New York, thence to England or France, and then across Europe and under tropical seas to China and then to Japan. Thus the message travels about 20,000 miles and over a half-dozen cables, when a trans-Pacific cable would only be 4,000 or 5,000 miles long. The Sandwich Islands could be included in any direct cable project, adding materially to the revenue. It surely is in the interest of commerce and government that this should be done at once."



THE
TOURISTS' GUIDE
THROUGH THE
HAWAIIAN ISLANDS
DESCRIPTIVE OF THEIR
SCENES AND SCENERY

HENRY M. WHITNEY
EDITOR AND PUBLISHER, HONOLULU, H. I.

SECOND EDITION. PRICE, 75 CENTS.

POSTPAID TO ANY PART OF THE WORLD, 80 CENTS

"The Tourists' Guide is beautifully gotten up, and is altogether the handsomest and most valuable work of the kind on Hawaii ever published."—GEO. H. DOLE, RIVERSIDE, CAL.

HONOLULU :
THE HAWAIIAN GAZETTE COMPANY'S PRESS
1895

0c 7618.6.5

INDEX TO SUBJECTS AND ILLUSTRATIONS.

	PAGE		PAGE
A Bold Princess	74	Halemauan Crater	70, 71
A Modern Paradise	158	Hamakua Coast, Description of	58, 86, 90
American Shipping at Honolulu	157	Hamakua Coast (picture), front cover	
Ancient Ruins	84, 85-103	Hana Village, Maui	117
Arrival at Honolulu	8	Hanalei Valley (picture)	128, 131
Arrival at Volcano	65	Hanapepe Falls	125
Band Music	37	Hauula, Oahu	45
Barking Sands of Mana	128	Hawaii, Description of	51-95
Baseball Grounds	37	Hawaii, (map)	opp. 48
Battle of Nuananu	31	Hawaiian Islands, (map), opp. title page	
Bishop Hall, Oahu College, opp.	24	Hawaiian Luau (picture)	opp. 136
Bishop Mansion	144	Health in Hawaii	153
Bishop Museum	112, 24	Hilo, Description of	58
Cable to California	152-161	Hilo district, Description of	90
Cane Cultivation	113	Hilo, Picture of	opp. page 1
Carriages and Hacks	10, 147	Honolulu, Description of	5-10
Coal Elevator	39	Honolulu, Hotels in	10, 11, 147
Coco Tree Planting	175	Honolulu, View of	8
Coconut Island (picture)	51, 52	Hula Dancing Girls (picture)	opp. 160
Coffee Growing at Oiaa	61	Iao Valley	101, 104
Coffee Industry	143	Industrial School	142
Coffee Lands	146	Information for Tourists	147
Coffee in Puna (picture)	80-93	In sane Asylum	23
Coins and Currency	7, 141	Judiciary Building	16, 18
Commerce of Hawaii	155	Judiciary of Hawaii	14
Consuls in Honolulu	17	Kaalea and Kusioa	43, 44
Cook's Monument (picture)	63, 64	Kaawaloa, S. Kona	64
Crater of Kilauea	68	Kahana and Kahuku	45, 47
Daggett's Waikiki Poem	50	Kahoolawe Island	121
Destiny of Hawaii	176	Kahului Village, Maui	104
Diamond Head	5, 83	Kailua Village, Hawaii	62
Diplomatic Representatives	17	Kalakaau's Election	12
Distances—Ocean	149	Kalihi Valley	34
Educational	15	Kamehameha Statue	19
Executive Government	11, 13	Kapa and Kealia, Kauai	129
Excursions around Honolulu	28	Kapiolani Park	36
Excursions around Oahu	42	Kau District	94
Excursions around the Pali	43	Kauai, Island of	122
Excursions around East Maui	115	Kawaiahao Church	19
Ex-Queen's Arrest	166	Kilauea, Start for	60
Facts about Hawaii	139	Kilauea Volcano, description	70-71
Fish Markets	24	Kilauea-iki	75
Fruits and Flowers	144, 169	Kilauea, Kauai, Village of	130
Government of Hawaii	11, 14	Kilohana, Kauai, Village of	134
Government Statistics	140, 154	Kipukai, Kauai, Village of	135
Haleakala, Ascent of	106-111		
Halemanu, Kauai	127		

24-3-5-2