

**THE CLERGY OF  
LITCHFIELD  
COUNTY**

Published @ 2017 Trieste Publishing Pty Ltd

ISBN 9780649550746

The Clergy of Litchfield County by Arthur Goodenough

Except for use in any review, the reproduction or utilisation of this work in whole or in part in any form by any electronic, mechanical or other means, now known or hereafter invented, including xerography, photocopying and recording, or in any information storage or retrieval system, is forbidden without the permission of the publisher, Trieste Publishing Pty Ltd, PO Box 1576 Collingwood, Victoria 3066 Australia.

All rights reserved.

Edited by Trieste Publishing Pty Ltd.  
Cover @ 2017

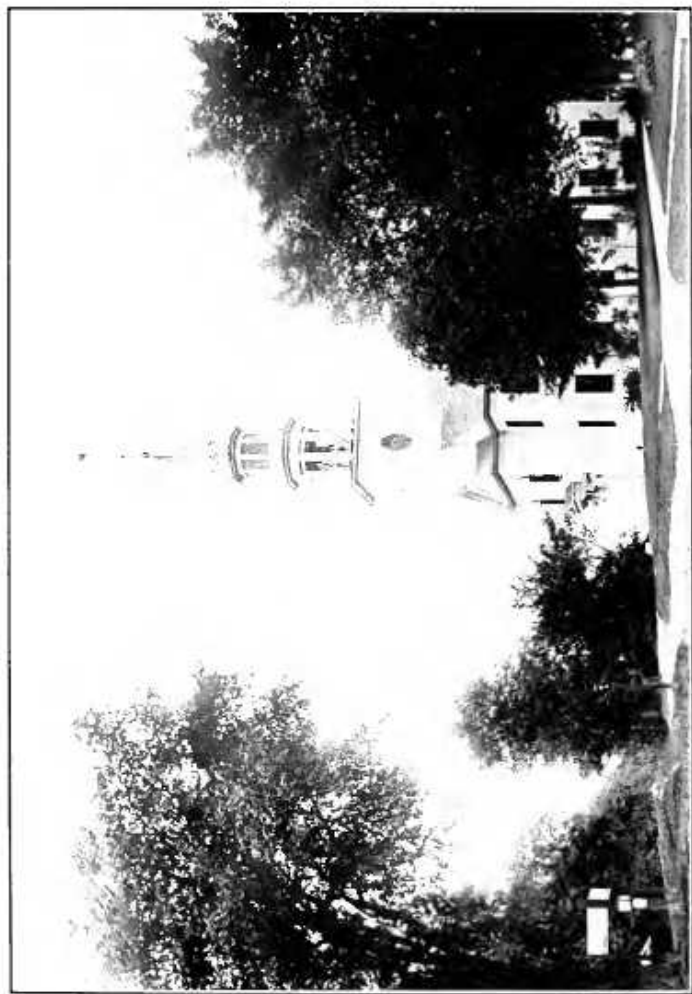
This book is sold subject to the condition that it shall not, by way of trade or otherwise, be lent, re-sold, hired out, or otherwise circulated without the publisher's prior consent in any form or binding or cover other than that in which it is published and without a similar condition including this condition being imposed on the subsequent purchaser.

[www.triestepublishing.com](http://www.triestepublishing.com)

**ARTHUR GOODENOUGH**

**THE CLERGY OF  
LITCHFIELD  
COUNTY**





Church of Christ, Norfolk

THE CLERGY  
OF  
LITCHFIELD COUNTY

BY  
ARTHUR GOODENOUGH



LITCHFIELD COUNTY  
UNIVERSITY CLUB  
MCMIX



Copyright, 1909, by  
ARTHUR GOODENOUGH







## CONTENTS

CHAPTER	PAGE
I FOUNDATIONS . . . . .	3
II THE PIONEERS . . . . .	10
III MANNERS AND CUSTOMS . . . . .	18
IV AN EIGHTEENTH-CENTURY SERMON . . . . .	29
V BIOGRAPHIES . . . . .	39
Rev. Joseph Bellamy . . . . .	40
Rev. Azel Backus, D.D. . . . .	42
Rev. John Trumbull . . . . .	43
Father Mills . . . . .	45
Rev. Daniel Farrand . . . . .	48
Rev. Ammi Ruhamah Robbins . . . . .	50
Extract from the Autobiography of a Blind Minister, Timothy Woodbridge . . . . .	53
Rev. Peter Starr . . . . .	55
Rev. Nathaniel Roberts . . . . .	56
Rev. Cotton Mather Smith . . . . .	58
Rev. Jeremiah Day, D.D. . . . .	61
VI SECOND PERIOD—TRANSITION . . . . .	65
VII PERSONAL SKETCHES . . . . .	74
Rev. Stanley Griswold . . . . .	74
Rev. Alexander Gillett . . . . .	77

## CONTENTS

CHAPTER	PAGE
Rev. Asahel Hooker . . . . .	80
Rev. Luther Hart . . . . .	81
Rev. Samuel R. Andrew . . . . .	82
Rev. James Beach . . . . .	83
Rev. Chauncey Lee, D.D. . . . .	85
Rev. Frederick Marsh . . . . .	88
VIII THIRD PERIOD—MODERNISM . . . . .	95
IX MORE PERSONAL SKETCHES . . . . .	99
Rev. Joseph Eldridge, D.D. . . . .	99
Rev. Adam Reid, D.D. . . . .	101
Rev. Lavalette Perrin, D.D. . . . .	103
Rev. William Elliott Bassett . . . . .	105
Rev. Hiram Eddy, D.D. . . . .	107
X THE EPISCOPAL CHURCH . . . . .	110
Bethlehem . . . . .	115
Bridgewater . . . . .	116
Canaan . . . . .	117
East Plymouth . . . . .	118
Harwinton . . . . .	119
Kent . . . . .	120
Lime Rock . . . . .	121
Litchfield . . . . .	121
Marbledale . . . . .	120
New Milford . . . . .	131
Northfield . . . . .	136
Pine Meadow . . . . .	137
Plymouth . . . . .	138
Riverton . . . . .	140