

**AN ATLAS OF HUMAN
ANATOMY FOR
STUDENTS AND
PHYSICIANS PP.260-400**

Published @ 2017 Trieste Publishing Pty Ltd

ISBN 9780649468683

An Atlas of Human Anatomy for Students and Physicians pp.260-400 by Carl Toldt

Except for use in any review, the reproduction or utilisation of this work in whole or in part in any form by any electronic, mechanical or other means, now known or hereafter invented, including xerography, photocopying and recording, or in any information storage or retrieval system, is forbidden without the permission of the publisher, Trieste Publishing Pty Ltd, PO Box 1576 Collingwood, Victoria 3066 Australia.

All rights reserved.

Edited by Trieste Publishing Pty Ltd.
Cover @ 2017

This book is sold subject to the condition that it shall not, by way of trade or otherwise, be lent, re-sold, hired out, or otherwise circulated without the publisher's prior consent in any form or binding or cover other than that in which it is published and without a similar condition including this condition being imposed on the subsequent purchaser.

www.triestepublishing.com

CARL TOLDT

**AN ATLAS OF HUMAN
ANATOMY FOR
STUDENTS AND
PHYSICIANS PP.260-400**

AN ATLAS
OF
HUMAN ANATOMY
FOR STUDENTS AND PHYSICIANS

BY
CARL TOLDT, M.D.
PROFESSOR OF ANATOMY IN THE UNIVERSITY OF VIENNA

ASSISTED BY
PROFESSOR ALOIS DALLA ROSA, M.D.

Translated from the Third German Edition and adapted to English and American and
International Terminology

BY
M. EDEN PAUL, M.D. BRUX., M.R.C.S., L.R.C.P.

THIRD SECTION
D. MYOLOGY
(FIGURES 490 TO 640 AND INDEX)



LONDON
REBMAN, LIMITED
129, SHAFESBURY AVENUE, CAMBRIDGE CIRCUS, W.C.
NEW YORK AGENTS: REBMAN COMPANY
10, WEST 23RD STREET, CORNER OF FIFTH AVENUE

1904

LANE LIBRA

GENERAL TABLE OF CONTENTS

Part I.

A. The Regions of the Human Body (Figs. 1 to 5)

B. Osteology (Figs. 6 to 377). With Index.

Price, bound in cloth, \$2.50 net.

 [Ready.]

Part II.

C. Arthrology (Figs. 378 to 489). With Index.

Price, bound in cloth, \$1.75 net.

 [Ready.]

Part III.

D. Myology, with a Supplement on the Anatomy of Hernia
(Figs. 490 to 640). With Index.

Price, bound in cloth, \$2.50 net.

 [Ready.]

Part IV.

E. Splanchnology (Figs. 641 to 932). With Index.

Price, bound in cloth, \$2.75 net.

Part V.

F. Angeiology (Figs. 933 to 1,123). With Index.

Price, bound in cloth, \$3.75 net.

Part VI.

G. Neurology (Figs. 1,124 to 1,333).

H. The Organs of the Senses (Figs. 1,334 to 1,505). With
Index.

Price, bound in cloth, \$4.75 net.

The six demy 4to. volumes complete, bound in cloth, \$18.

*All rights reserved.
Entered at Stationers' Hall.*

LIBRARY

Eu
T649p
V.3
1924

MYOLOGIA

MYOLOGY

ERRATA IN PART III. OF TOLDT'S "ATLAS OF HUMAN ANATOMY."

- Page 322, left-hand column, eighth entry, after the words "Anterior annular ligament of the wrist" add the words "(superficial layer)," and refer to note ²²⁴ in the Appendix to Part V.
- Page 324, left-hand column, seventh entry, after the words "Remains of the anterior annular ligament of the wrist" add the words "(deep layer)," and refer to note ²²⁵ in the Appendix to Part V.
- Page 332, right-hand column, third entry, after the words "Anterior annular ligament of the wrist" add the words "(superficial layer)," and refer to note ²²⁶ in the Appendix to Part V.
- Page 334, right-hand column, second entry, after the words "Anterior annular ligament of the wrist" add the words "(deep layer)," and refer to note ²²⁷ in the Appendix to Part V.

83202

33

MYOLOGY—GENERAL CONSIDERATIONS

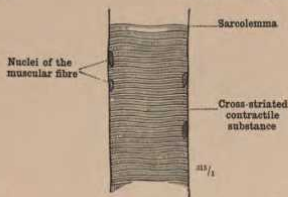


FIG. 490.—A PORTION OF AN ISOLATED CROSS-STRIATED MUSCULAR FIBRE.

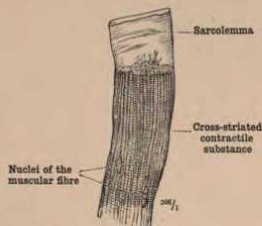


FIG. 491.—A PORTION OF AN ISOLATED CROSS-STRIATED MUSCULAR FIBRE IN WHICH FOR A SHORT DISTANCE THE CONTRACTILE SUBSTANCE HAS BEEN REMOVED FROM THE SARCOLEMMA.

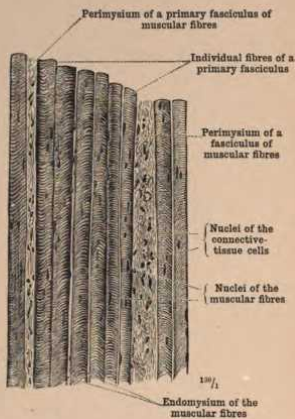


FIG. 492.—FASCICULUS OF MUSCULAR FIBRES FROM A LONGITUDINAL SECTION OF THE HUMAN SARTORIUS MUSCLE, HARDENED IN PICRIC ACID SOLUTION.

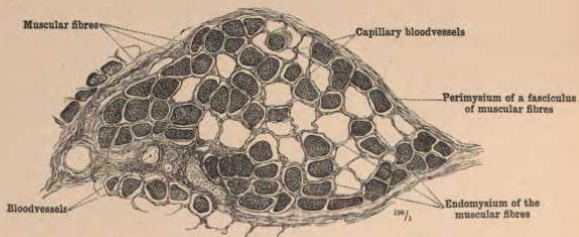


FIG. 493.—FASCICULI OF MUSCULAR FIBRES IN TRANSVERSE SECTION. SOME OF THE FASCICULI HAVE FALLEN OUT OF THE SECTION. IN THE PERIMYSIUM OF THE FASCICULI NUMEROUS CAPILLARY BLOODVESSELS ARE SEEN IN TRANSVERSE SECTION. (FROM A TRANSVERSE SECTION OF THE HUMAN SARTORIUS MUSCLE, HARDENED IN PICRIC ACID SOLUTION AND ALCOHOL.)

Elementary Constituents and Structure of Muscle.

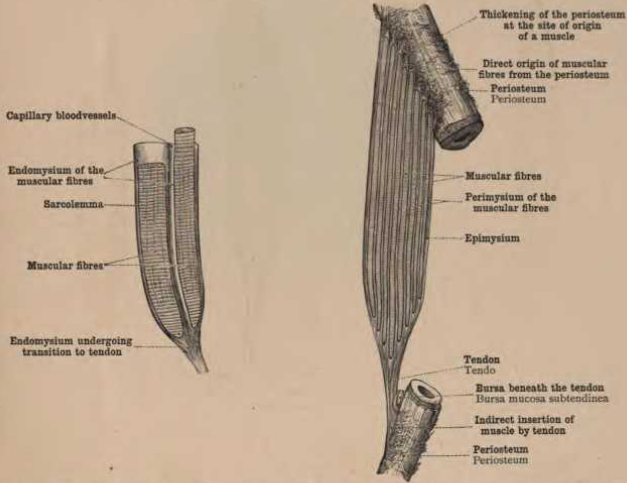


FIG. 494.—DIAGRAMMATIC REPRESENTATION OF THE RELATION OF THE MUSCULAR FIBRES TO THE ENDOMYSIUM.

FIG. 495.—DIAGRAMMATIC REPRESENTATION OF THE RELATION OF THE PERIMYSIUM TO THE ORIGIN AND THE INSERTION OF THE MUSCLE (THE INSERTION IN THIS CASE BEING BY TENDON).



FIG. 496.—TRANSVERSE SECTION THROUGH THE SARTORIUS MUSCLE OF A NEW-BORN INFANT, SHOWING THE PRIMARY AND SECONDARY FASCICULI OF MUSCULAR FIBRES.

Structure of Muscle.