

**GUIDE THROUGH THE ROYAL
PICTURE GALLERY IN
DRESDEN: A VADEMECUM FOR
EVERY STRANGER. III YEAR**

Published @ 2017 Trieste Publishing Pty Ltd

ISBN 9780649459636

Guide through the Royal Picture Gallery in Dresden: A Vademecum for Every Stranger. III
Year by Anonymous

Except for use in any review, the reproduction or utilisation of this work in whole or in part in any form by any electronic, mechanical or other means, now known or hereafter invented, including xerography, photocopying and recording, or in any information storage or retrieval system, is forbidden without the permission of the publisher, Trieste Publishing Pty Ltd, PO Box 1576 Collingwood, Victoria 3066 Australia.

All rights reserved.

Edited by Trieste Publishing Pty Ltd.
Cover @ 2017

This book is sold subject to the condition that it shall not, by way of trade or otherwise, be lent, re-sold, hired out, or otherwise circulated without the publisher's prior consent in any form or binding or cover other than that in which it is published and without a similar condition including this condition being imposed on the subsequent purchaser.

www.triestepublishing.com

ANONYMOUS

**GUIDE THROUGH THE ROYAL
PICTURE GALLERY IN
DRESDEN: A VADEMECUM FOR
EVERY STRANGER. III YEAR**

0

GUIDE THROUGH THE
ROYAL PICTURE GALLERY
IN DRESDEN.



A VADEMECUM FOR EVERY
STRANGER.



III Year.

1901.

AMERICAN SECRETARY,
EDITOR AND PUBLISHER
BEHLENDORFF, PRESIDENT, DRESDEN,
30 GÜTERBAHNHOFSTRASSE.



DEPOSITED BY
FOGG ART MUSEUM
11. 5. 41

48
D 773
1901

Credit-Anstalt für Industrie und Handel.

CAPITAL 20 MILLIONS.

RESERVE FUNDS 5 MILLIONS.

FOREIGN EXCHANGE OFFICES
OF
GEORGE MEUSEL & CO.

13 Altmarkt.

BRANCH OFFICE

23 Pragerstrasse.

ANGLO-AMERICAN AND SCANDINAVIAN
BANKERS.

LETTERS OF CREDIT CASHED.

ALL KINDS OF BANKING AND EXCHANGE
BUSINESS TRANSACTED ON MOST
ADVANTAGEOUS TERMS.

LIBERAL INTERESTS ALLOWED ON DEPOSITS.

OFFICE HOURS FROM 9—1 O'CLOCK,
AND 3—6 O'CLOCK;

SATURDAYS FROM 9—3 O'CLOCK.

Founded 1856.

THE ROYAL PICTURE GALLERY,

rivalled only by the Louvre of Paris and the gallery of Florence, enjoys a great reputation all over the world and is everywhere well known on account of its rare master-works, especially of the Dutch and Italian schools.

NB. Visitors to the museum must deposit their canes and umbrellas at the porter's. (10 Pf.)

HOURS FOR VISITING OF THE MUSEUMS,
see Advertisement latest page.



OSTRICH-
FEATHER-BOAS,
FANCY-FEATHER-
BOAS.



Very large Assortment of own
Manufacturing.
FEATER-FANS,
of plains as well as highly elegant.
OSTRICH-FEATHERS.
FANCY-FEATHERS &c.

F. A. Schumann

Propri. J. HIMBSEL.

By Appointment to the Royal Court.

Own Repairing-workshop.

Pirnaischer Platz corner of Pirnaischestrass.



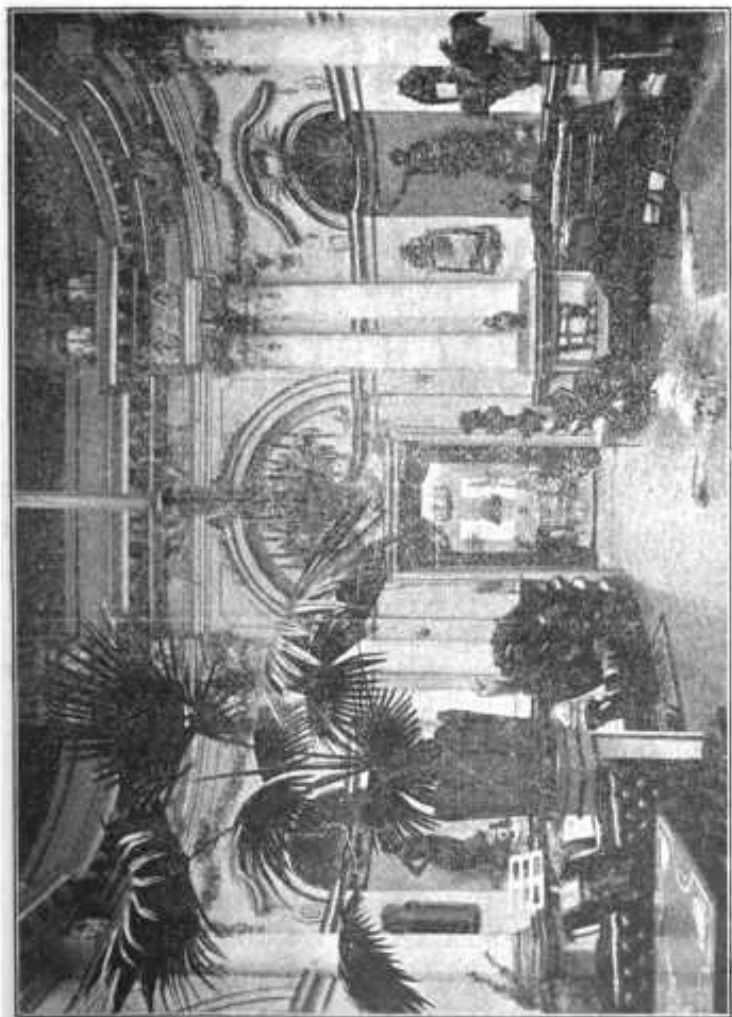
ACADEMY FOR
DRAWING AND
—≡— PAINTING.

PROFESSOR E. O. SIMONSON CASTELLI
3 Ostbahnstrasse 3.

PRIVILEGED
BY THE ROYAL SAXON GOVERNMENT.

Separate studios for ladies and gentlemen.

Admission at any time.



Hall and Drawing Room in the Roman Villa of Professor Simonson Castelli, Dresden.

COFFEE- 
ROASTING-HOUSE
first class.

MAX THÜRMER
18 KAULBACHSTRASSE 18.

I lead only one article: roasted Coffee.

By my way of roasting coffee (time of roasting $3\frac{1}{2}$ min.) the aroma taste and richness are brought out to the highest perfection. The higher the contents of extraction the cheaper the Coffee.

I conduct my large Coffee roasting business since the year 1880.

Shops in all parts of the town.

Entrance Pragerstrasse corner of Wienerstrasse,
from 1. Juli 58 Pragerstrasse.

Waisenhausstrasse (Victoriahaus),	13 Seestrasse,
21 König Johann-Strasse,	4 Hauptstrasse,
31 Bautznersstrasse,	42 Leipzigerstrasse,
41 Königsbrückerstrasse,	7 Falkenstrasse,
14 Striesenerstrasse,	1 gr. Plannschestrasse,
44 Mathildenstrasse entry Pillnitzerstrasse,	
4 Pfothenhauerstrasse and Blasewitz (am Schillerplatz).	

HARTWIG & VOGEL

1600 workmen.

Manufacturers of warranted pure
CHOCOLATE and COCOA-POWDER,
CONFECTIONERY, MARCHPANE, WAFERS &c.

Speciality: **TELL CHOCOLATE** (edible).

In Packets 40, 50, 60, 75 Pf., in tablets 25 Pf.

Be glad to offer their excellent universally liked
and approved articles and besides a choice se-
lection of DESSERT-BONBONS, CAKES, BIS-
CUITS of GERMAN and ENGLISH-MAKE,
BONBONNIERES, &c. &c., extensive choice.

Particularly recommended for the Journey:
TRAVELLING and FANCY CHOCOLATE in
tablets & boxes, large assortment in elegant packets.

COCOA-VERO, pure soluble COCOA.

Made at once with boiling water.

PEPPERMINT PASTILLS, extra strong, very
refreshing.

LEMONADE-DROPS and ROCKS with fruit-
flavour, pleasant sour taste.

SELF-IMPORTED TEAS.

— Telephone I Amt 46. —

HARTWIG & VOGEL

15 ALTMARKT, 26 HAUPTSTRASSE.