

**A GUIDE TO THE EXHIBITION GALLERIES
OF THE DEPARTMENT OF GEOLOGY
AND PALAENTOLOGY IN THE BRITISH
MUSEUM (NATURAL HISTORY), PART
I.-FOSSIL MAMMALS AND BIRDS**

Published @ 2017 Trieste Publishing Pty Ltd

ISBN 9780649465620

A Guide to the Exhibition Galleries of the Department of Geology and Palaeontology in the British Museum (Natural History), Part I.-Fossil Mammals and Birds by Henry Woodward

Except for use in any review, the reproduction or utilisation of this work in whole or in part in any form by any electronic, mechanical or other means, now known or hereafter invented, including xerography, photocopying and recording, or in any information storage or retrieval system, is forbidden without the permission of the publisher, Trieste Publishing Pty Ltd, PO Box 1576 Collingwood, Victoria 3066 Australia.

All rights reserved.

Edited by Trieste Publishing Pty Ltd.
Cover @ 2017

This book is sold subject to the condition that it shall not, by way of trade or otherwise, be lent, re-sold, hired out, or otherwise circulated without the publisher's prior consent in any form or binding or cover other than that in which it is published and without a similar condition including this condition being imposed on the subsequent purchaser.

www.triestepublishing.com

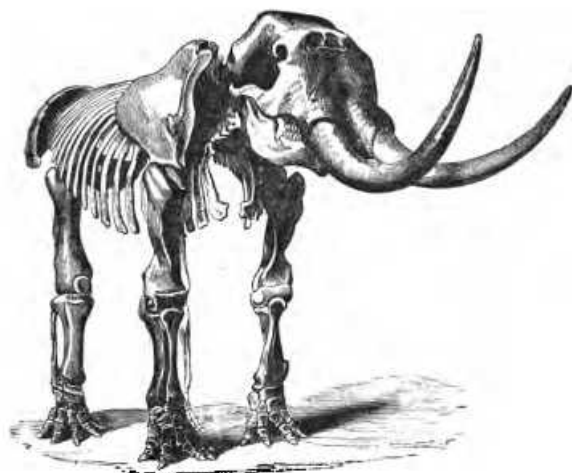
HENRY WOODWARD

**A GUIDE TO THE EXHIBITION GALLERIES
OF THE DEPARTMENT OF GEOLOGY
AND PALAENTOLOGY IN THE BRITISH
MUSEUM (NATURAL HISTORY), PART
I.-FOSSIL MAMMALS AND BIRDS**



Skeleton of *Megatherium Americanum*, Cuvier.
PLEISTOCENE, BUENOS AYRES, S. AMERICA.

A GUIDE
TO THE
EXHIBITION GALLERIES
OF THE DEPARTMENT OF
GEOLOGY AND PALÆONTOLOGY



IN THE
BRITISH MUSEUM (NATURAL HISTORY),
CROMWELL ROAD, LONDON, S.W.

Part I.—FOSSIL MAMMALS AND BIRDS.

PRINTED BY ORDER OF THE TRUSTEES.

1890.

THE LIBRARY
OF CONGRESS

LONDON:
HARRISON AND SONS, PRINTERS IN ORDINARY TO HER MAJESTY,
ST. MARTIN'S LANE.

JUN 7 1905
D. of D.

THE LIBRARY
OF CONGRESS

TABLE OF CONTENTS. (PART I.)

	PAGES
FRONTISPICE (to face Title-page).	
Table of Contents	iii
List of Illustrations	iv-viii
Preface	ix
Table of Stratified Rocks	x
Introduction	xi, xii

VERTEBRATA.

CLASS 1.—MAMMALIA.

NATURE OF DEPOSITS

Sub-class 1. MONOTRYPHIA (Eutheria).	3
Order I. PRIMATES (Man)	3
Sub-order 1. ANTHROPOIDEA (Monkeys)	4
Sub-order 2. LEMUROIDEA (Lemurs)	4
Order II. CARNIVORA (Flesh-eating Animals)	5
Sub-order 1. FISSIPEDIA (Lion, Cat, &c.)	5
Sub-order 2. PINNIPEDIA (Seals, Walrus, &c.)	7
Order III. INSECTIVORA (Moles, Shrews, &c.)	7
Order IV. CHIROPTERA (Bats)	8
Order V. DERMOTERA (Flying Lemurs)	8
Order VI. RODENTIA (Gnawing Animals)	8
Sub-order 1. SIMPLICIDENTATA (Squirrel, Beaver, Rat, &c.)	10
Sub-order 2. DIFLUCIDENTATA (Hares and Rabbits)	10
Order VII. UNGULATA (Hoofed Animals)	10
Sub-order 1. PROBOSCIDEA (Elephants)	10
Sub-order 2. HYRACIDEA (Cotties)	24
Sub-order 3. ANELYPODA (<i>Coryphodon</i>)	25
Sub-order 4. DINOCERATA (<i>Dinoceras</i>)	26
Sub-order 5. CONDYLARTHRA (<i>Periphycheus</i>)	29
Sub-order 6. TOXODONTIA (<i>Toxodon</i>)	29
Sub-order 7. PERISSODACTYLA (Tapir, Rhinoceros, Horse, &c.)	30
Sub-order 8. ARTIODACTYLA (Fig, Deer, Camel, &c.)	40
Order VIII. SIERNIA (Dugong, Manatee)	60
Order IX. CETACEA (Whales)	63
Order X. EDENTATA (Sloth, Armadillo)	66
Sub-class 2. DIDELPHIA (Metatheria)	66
Order XI. MARSUPIALIA (Kangaroo, Wombat, &c.)	78
Sub-class 3. ORNITHODELPHIA (Prototheria)	86
Order XII. MONOTREMATA	84

CLASS 2.—AVES (Birds)

Order I. SAURURAE (Lizard-tailed Birds) <i>Archaeopteryx</i>	87
Order II. RAPTURAE	
a. Birds with Teeth, <i>Hesperornis</i>	89
b. Birds without Teeth, <i>Dinornis</i> , &c.	92
Order III. CARINATAE	
a. Birds with Teeth, <i>Icthyornis</i> , &c.	90
b. Birds without Teeth (all the later Tertiary and Modern Flying Birds)	92
Explanation of Plan	97-98
Folding Plan of Galleries to face page	98
Index	99-113
List of Catalogues and Guides	104-106

023 4/11/15

Recd. 11/15 5-3-39

LIST OF ILLUSTRATIONS.

	Pag.
FRONTISPIECE.— <i>Megatherium americanum</i> (Cuvier), Buenos Ayres.	
FIG. 1.—Palatal aspect of teeth of <i>Adapis magna</i> (Filhol), Upper Eocene, Hordwell, Hants	4
" 2.—Right ramus of mandible of <i>Vicerra Hastingsia</i> (Davies), Upper Eocene, Hordwell, Hants	5
" 3.—Skull of <i>Macharodus neogaus</i> (Lund), Pleistocene, Buenos Ayres, South America	5
" 4.—Right upper carnassial tooth of <i>Hyena striata</i> (Zimm.), Suffolk Crag	6
" 5.—Right ramus of mandible of <i>Cephalogale brevirostris</i> (Croizet), Upper Eocene, Bach, France	6
" 6.—Profile of skull of <i>Ursus spelaeus</i> (Rosenmüller), Pleistocene Caves of Germany and France	7
" 7.—Right upper cheek-teeth of <i>Microchirus erinaceus</i> (Wood), Upper Eocene, Hordwell, Hants	9
" 8.—Skull of <i>Cynomys ludovicianus</i> (Baird), "the Prairie Marmot," Missouri	9
" 9.—Dentition of Beaver, <i>Castor europæus</i> (Owen), Pleistocene, Cambridgeshire Fens (in Pent)	9
" 10.—Skull of <i>Dinotherium giganteum</i> (Kaup), Upper Miocene of Eppelsheim, Hessen-Darmstadt	11
" 11.—Left upper molar of <i>Dinotherium giganteum</i> (Kaup), Middle Miocene, Samaran, France	12
" 12.—First right lower true molar of <i>Mastodon sivalensis</i> (Cautley), Older Pliocene, Siwalik Hills, India	12
" 13.—Fourth left upper milk molar of <i>Mastodon arvernensis</i> (Croizet et Jobert), Norwich Crag	13
" 14.—Skull of <i>Mastodon longirostris</i> (Kaup), Upper Miocene, Eppels- heim, Germany	13
" 15.—Lower molar of living Indian Elephant (much reduced)	14
" 16.—Upper " " African " "	14
" 17.—Vertical longitudinal section of molar of <i>Elephas planifrons</i> (Falc. and Cautl.), Pliocene, Siwalik Hills, India	15
" 18.—View of grinding-surface of molar of "Mammoth," <i>Elephas</i> <i>primigenius</i> (Blum.), Dogger Bank	15
" 19.—Grinding surface of molar of <i>Elephas antiquus</i> (Falconer), Pleistocene, Grays, Essex	16
" 20.—Grinding surface of molar of <i>Elephas meridionalis</i> (Nesti), Upper Pliocene, Tuscany	16
" 21.—Left lower milk molar of <i>Mastodon angustidens</i> , var. <i>pala-</i> <i>indicus</i> (Lydekker), Lower Siwaliks, India	17

	Page
FIG. 22.—Left milk molars of <i>Mastodon longirostris</i> (Kaup), Upper Miocene, Eppelsheim, Germany	17
„ 23.—Vertical longitudinal section of molar of <i>Mastodon angustidens</i> (Cuvier), Middle Miocene, France	17
„ 24.—Profile of left lower molar of <i>Mastodon americanus</i> (Cuvier), Pleistocene, North America	18
„ 25.—Skeleton of <i>Mastodon americanus</i> (Cuvier), (reduced); Pleistocene, Missouri; North America	18
„ 26.—Skeleton (restored and greatly reduced) of <i>Mastodon angustidens</i> (Cuvier), Middle Miocene, France	19
„ 27.—Right upper milk molars of <i>Elephas primigenius</i> (Blum), Creswell Crags Cave, Derbyshire	20
„ 28.—Lower jaw of "Mammoth," <i>Elephas primigenius</i> (Blum), Dogger Bank, North Sea	21
„ 29.—Profile of skull of <i>Elephas gansea</i> (Falc. and Cautl.), Older Pliocene, Siwalik Hills, India	22
„ 30.—Profile of skull of <i>Elephas planifrons</i> (Falc. and Cautl.), Older Pliocene, Siwalik Hills, India	22
„ 31.—Profile of skull of <i>Mastodon sivalensis</i> (Falc. & Cautl.), Older Pliocene, Siwalik Hills, India	22
„ 32.—Skeleton of the "Mammoth," preserved in the St. Petersburg Museum (discovered in 1868)	23
„ 33.—Upper and lower teeth of <i>Coryphodon hamatus</i> (Marsh), Eocene, North America	25
„ 34.—Palatal aspect of skull of <i>Coryphodon elephantopus</i> (Cope), Wasatch Eocene, New Mexico, U.S.A.	25
„ 35.—Restoration of <i>Tynoceras ingens</i> (Marsh), Eocene Tertiary, Wyoming, North America	26
„ 36.—Skeleton of <i>Phenacodus primævus</i> (Cope), Eocene, Wyoming, U.S.A.	28
„ 37.—Skull and lower jaw of <i>Typotherium cristatum</i> (P. Gervais), Pleistocene, South America	29
„ 38.—Modifications of the bones in the Perissodactyle fore-foot in Tapir, Rhinoceros, and Horse	30
„ 39.—Skull and lower jaw of <i>Rhinoceros leptorhinus</i> (Owen), Pleistocene, Ilford, Essex	31
„ 40.—Skull and lower jaw of <i>Rhinoceros megalodus</i> (Cope), Miocene, Colorado, North America	32
„ 41.—Upper left molars of <i>Rhinoceros Croizeti</i> (Fülhol), Upper Eocene, Bach, France	33
„ 42.—Right upper molar of <i>Chalicotherium sinense</i> (Owen), Pliocene, China	34
„ 43.—Anterior and distal aspect of phalangeal bone of <i>Chalicotherium sivalense</i> (F. & C.), Siwalik Hills, India	34
„ 44.—Skeleton of <i>Brontops robustus</i> (Marsh), Miocene, Dakota, North America	35
„ 45.— <i>Palæotherium</i> , Eocene, Montmartre (restored)	36

	Page
FIG. 46.—Cheek-teeth of <i>Palaeotherium annectens</i> (Owen), Upper Eocene, Hordwell, Hampshire	37
„ 47.—Right upper true molars of <i>Auchitherium Bairdii</i> (Leidy), Miocene, Dakota, North America	37
„ 48.—Genealogy of the Horse (<i>Equus caballus</i>)	39
„ 49.—Modifications of the bones in the Artiodactyle fore-foot (after Prof. Flower)	40
„ 50.—A, Palatal view of skull of recent <i>Hippopotamus amphibius</i> (Linn.), recent from Africa; and B, lower jaw of same	41
„ 51.—Profile of skull and lower jaw of <i>Hippopotamus amphibius</i>	42
„ 52.—Skull and lower jaw of <i>Hippopotamus rivalensis</i> (Falc. & Caut.), Pliocene, Siwalik Hills, India	43
„ 53.—Right lower molar of <i>Sus cristatus</i> (Wagner), Pliocene, India	44
„ 54A.—Right upper molar of <i>Hyopotamus borius</i> (Owen), U. Eocene, Isle of Wight	45
„ 54B.—Left upper molars of <i>Hyopotamus porcinus</i> (P. Gervais), U. Eocene, Isle of Wight	45
„ 54C.—Right upper molar of <i>Merycopotamus dissimilis</i> (F. & C.), Pliocene, India	45
„ 55.—Cheek-teeth of <i>Anoplotherium cayluxense</i> , Eocene, France	46
„ 56.—Right maxilla of <i>Anoplotherium secundarium</i> , U. Eocene, Débruge, France	46
„ 57.—Profile, and upper and lower views of the skull of <i>Canotherrium Fuldii</i> (Lydekker), U. Eocene, Caylux, France	47
„ 58.—Cheek-teeth of <i>Lophiomeryx Chalanvati</i> (Pomel), Eocene, Quercy, France	48
„ 59.—Side-view of skull of living Chevrotain, <i>Tragulus javanicus</i> (Pallas), Java	48
„ 60.—Antlers of Cervids	49
„ 61.—Skeleton of <i>Cervus (Megaceros) giganteus</i> , Shell-marl, Ireland	50
„ 62.—Left upper molar of <i>Cervus rivalensis</i> , Pliocene, India	51
„ 63.—Left upper molar of <i>Palaeomeryx sivalensis</i> , Pliocene, India	51
„ 64.—Antlers of 5th and 6th years of <i>Cervus tetraceros</i> (Boyd-Dawkins), Pliocene, Peyrolles, France	52
„ 65.—Antlers of <i>Cervus cylindroceros</i> (Boyd-Dawkins), U. Pliocene, Ardé, France	53
„ 66.—Antler of <i>Cervus elaphus</i> , River Boyne, Drogheda, Ireland	53
„ 67.—Skull and antlers of <i>Rangifer tarandus</i> (Linn.), Pleistocene, Bilney Moor, Norfolk	54
„ 68.—Skull of <i>Stenotherium giganteum</i> (F. & C.), Lr. Pliocene, Siwalik Hills, India	55
„ 69.—Profile of skull and lower jaw of <i>Samotherium Boissieri</i> (Forsyth-Major), Pliocene, Samos	56
„ 70.— <i>Oribos moschatus</i> , recent, North Grinnell-Land	58
„ 71.—Skull of <i>Bos taurus</i> , var. <i>primigenius</i> (Boj.), Pliocene, Athol	59