

**THE CHESS-PLAYER'S HAND-
BOOK: CONTAINING A FULL
ACCOUNT OF THE GAME OF
CHESS, AND THE BEST MODE OF
PLAYING IT**

Published @ 2017 Trieste Publishing Pty Ltd

ISBN 9780649328604

The Chess-player's Hand-book: Containing a Full Account of the Game of Chess, and the Best Mode of Playing it by Anonymous

Except for use in any review, the reproduction or utilisation of this work in whole or in part in any form by any electronic, mechanical or other means, now known or hereafter invented, including xerography, photocopying and recording, or in any information storage or retrieval system, is forbidden without the permission of the publisher, Trieste Publishing Pty Ltd, PO Box 1576 Collingwood, Victoria 3066 Australia.

All rights reserved.

Edited by Trieste Publishing Pty Ltd.
Cover @ 2017

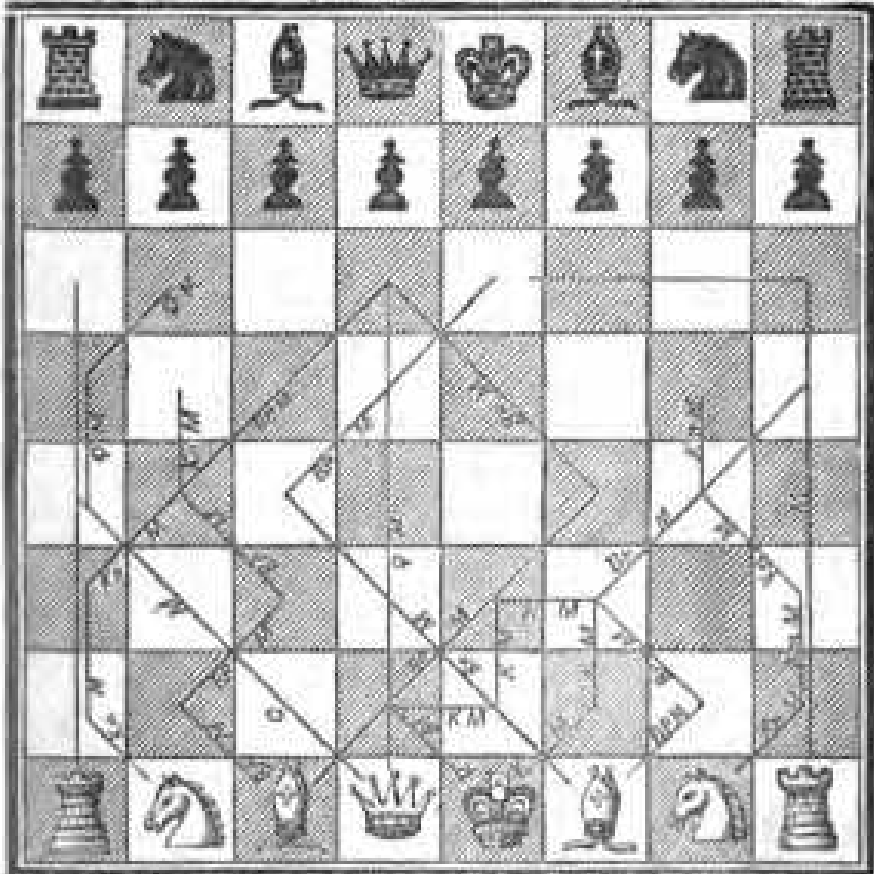
This book is sold subject to the condition that it shall not, by way of trade or otherwise, be lent, re-sold, hired out, or otherwise circulated without the publisher's prior consent in any form or binding or cover other than that in which it is published and without a similar condition including this condition being imposed on the subsequent purchaser.

www.triestepublishing.com

ANONYMOUS

**THE CHESS-PLAYER'S HAND-
BOOK: CONTAINING A FULL
ACCOUNT OF THE GAME OF
CHESS, AND THE BEST MODE OF
PLAYING IT**

Black Q, R, B, Q, Kn, B, Q, Ep. B, Q. B, K. B, K, Ep. B, K, Kn, B, K, R.



White Q, R, B, Q, Kn, B, Q, Ep. W, Q. W, K. W, K, Ep. W, K, Kn, W, K, R.

ABBREVIATIONS IN THE PLATE.

- | | | |
|--------------------|----------------------------|------------------------------|
| <i>K.</i> King. | <i>R.</i> Rook. | <i>Ep. M.</i> Bishop's March |
| <i>Q.</i> Queen. | <i>K. M.</i> King's March. | <i>Kn. M.</i> Knight's do. |
| <i>Ep.</i> Bishop. | <i>Q. M.</i> Queen's do. | <i>R. M.</i> Rook's do. |
| <i>Kn.</i> Knight. | | |

THE
CHESS-PLAYER'S HAND-BOOK;

CONTAINING

A FULL ACCOUNT OF THE GAME OF CHESS, AND THE
BEST MODE OF PLAYING IT.

BY THE AUTHOR OF

The Hand-Books of "Etiquette," "Conversation," "The Table,"
"Courtship and Marriage," etc., etc.

PHILADELPHIA:

GEORGE S. APPLETON, 148 CHESTNUT STREET

NEW YORK:

D. APPLETON & CO., 90 BROADWAY.

1849.

SG 3646.913.17

✓

HARVARD COLLEGE LIBRARY

BEQUEST OF

SILAS W. FURFELD

NOVEMBER 8, 1938

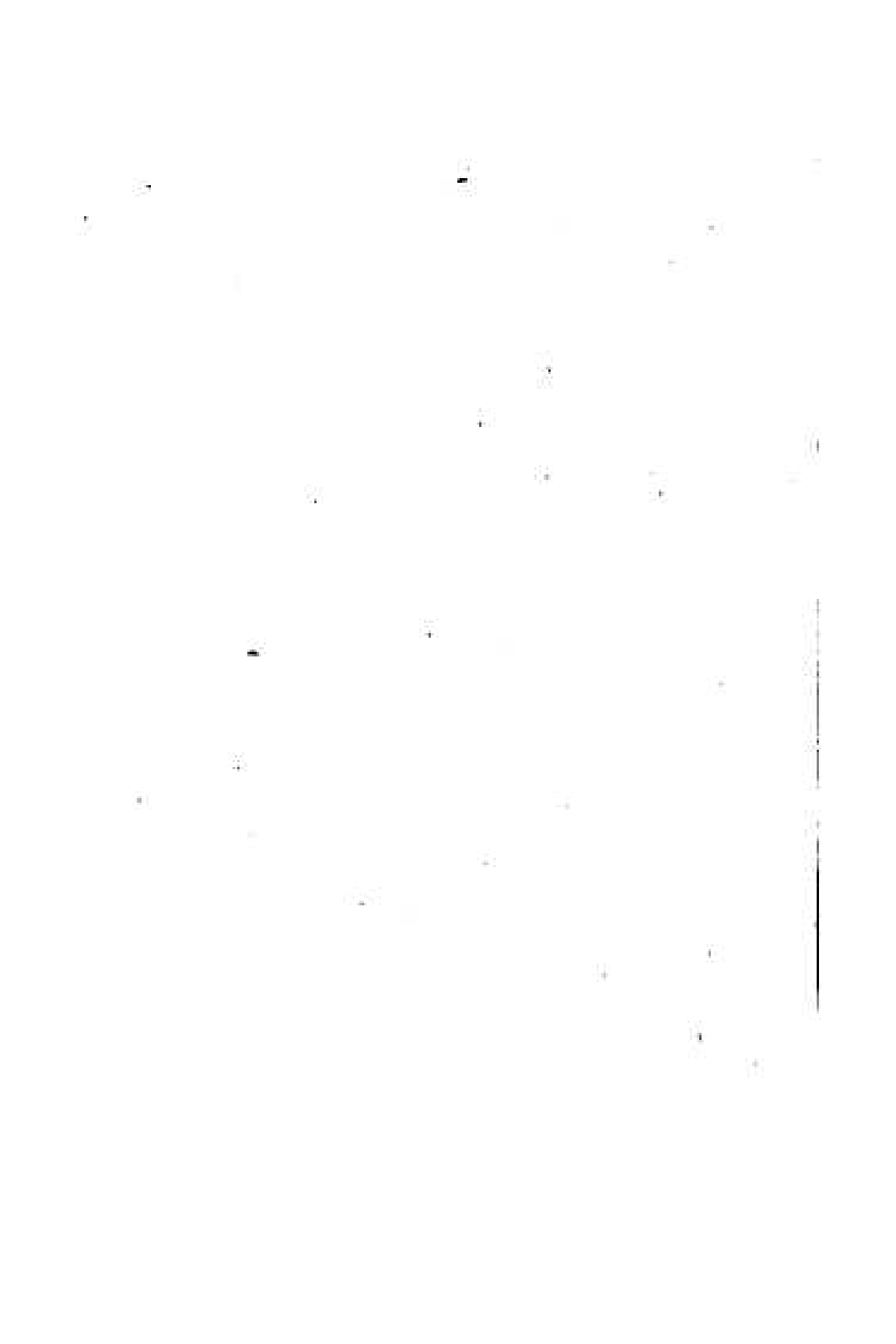
Entered according to the Act of Congress, in the year
1900, by

GEORGE B. APPLETON.

In the Office of the Clerk of the District Court of the United
States in and for the Eastern District of Pennsylvania.

ADVERTISEMENT.

WITHIN the space to which this little work is necessarily restricted, it was manifestly impossible to give very numerous instances of moves; but it is believed that every information is contained in its pages that will not only render it a book of sufficient instruction to lead the pupil to a complete acquaintance with the game of Chess, but also a pleasing and instructive companion to the board at all times. The best authorities have been consulted in its compilation, and nothing is admitted which does not seem to be of positive use, while no *necessary* information has, that its author is aware of, been excluded.



CONTENTS.

	Page
Introduction	9
History of the Game	11
Description of the Board	13
The Men	13
Their Disposition on the Board	14
Moves of the Pieces	15
Mode of Taking	17
Value of the Pieces	18
Summary Statement of their Value	21
Pieces given in Playing Odds	23
Laws of the Game	23
Hints on Opening the Game	23
Hints for the Progress of the Game	24
General Hints on the Pieces	28
Openings of the Game	29
The King's Gambit	41
Etic, Second Game	42
The Queen's Gambit	43
Irregular Openings	47
The Flanquette	50
Match-Game of the London and Edinburgh Clubs	53
Technical Terms	57
Conclusion	64

Table 1. Mean values of the dependent variables in the different conditions. The dependent variables were the number of correct responses (CR) and the number of errors (ER) in the different conditions. The dependent variables were calculated as the mean of the number of correct responses and the number of errors in the different conditions. The dependent variables were calculated as the mean of the number of correct responses and the number of errors in the different conditions.

Condition	CR		ER	
	Mean	SD	Mean	SD
Control	10.5	1.5	1.5	1.5
100%	10.5	1.5	1.5	1.5
75%	10.5	1.5	1.5	1.5
50%	10.5	1.5	1.5	1.5
25%	10.5	1.5	1.5	1.5
10%	10.5	1.5	1.5	1.5
5%	10.5	1.5	1.5	1.5
2%	10.5	1.5	1.5	1.5
1%	10.5	1.5	1.5	1.5
0%	10.5	1.5	1.5	1.5
Control	10.5	1.5	1.5	1.5
100%	10.5	1.5	1.5	1.5
75%	10.5	1.5	1.5	1.5
50%	10.5	1.5	1.5	1.5
25%	10.5	1.5	1.5	1.5
10%	10.5	1.5	1.5	1.5
5%	10.5	1.5	1.5	1.5
2%	10.5	1.5	1.5	1.5
1%	10.5	1.5	1.5	1.5
0%	10.5	1.5	1.5	1.5