

**POLIOMYELITIS
(INFANTILE
PARALYSIS)**

Published @ 2017 Trieste Publishing Pty Ltd

ISBN 9780649487592

Poliomyelitis (Infantile Paralysis) by F. P. Millard

Except for use in any review, the reproduction or utilisation of this work in whole or in part in any form by any electronic, mechanical or other means, now known or hereafter invented, including xerography, photocopying and recording, or in any information storage or retrieval system, is forbidden without the permission of the publisher, Trieste Publishing Pty Ltd, PO Box 1576 Collingwood, Victoria 3066 Australia.

All rights reserved.

Edited by Trieste Publishing Pty Ltd.
Cover @ 2017

This book is sold subject to the condition that it shall not, by way of trade or otherwise, be lent, re-sold, hired out, or otherwise circulated without the publisher's prior consent in any form or binding or cover other than that in which it is published and without a similar condition including this condition being imposed on the subsequent purchaser.

www.triestepublishing.com

F. P. MILLARD

**POLIOMYELITIS
(INFANTILE
PARALYSIS)**

POLIOMYELITIS
(INFANTILE PARALYSIS)

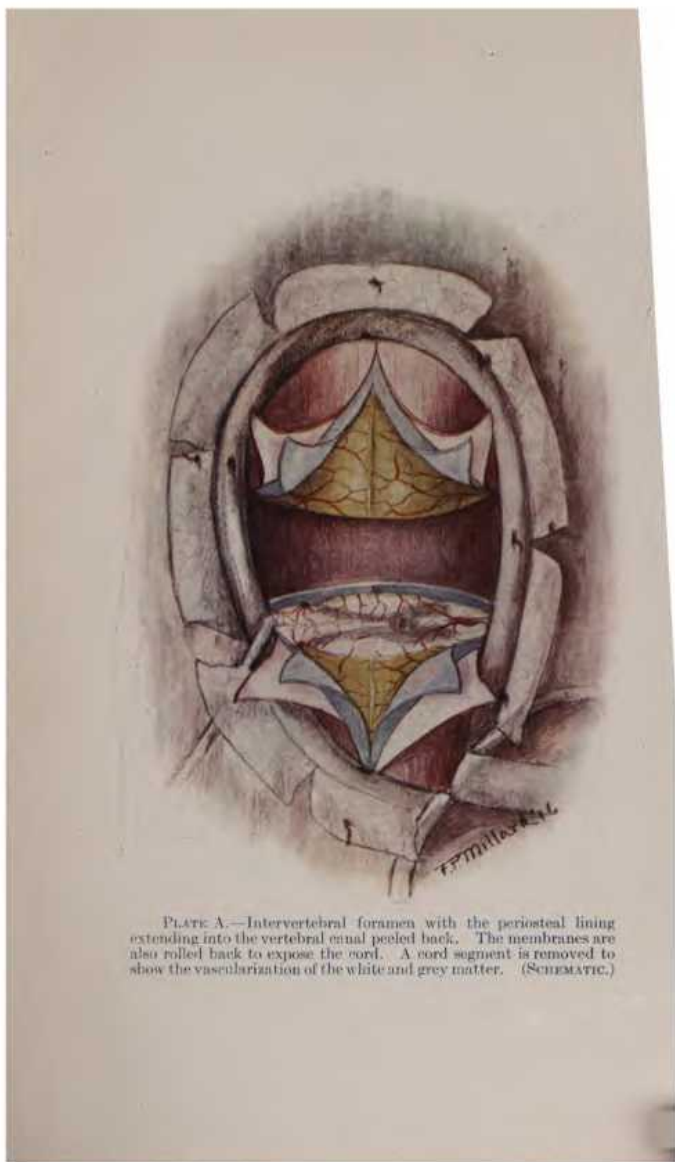


PLATE A.—Intervertebral foramen with the periosteal lining extending into the vertebral canal peeled back. The membranes are also rolled back to expose the cord. A cord segment is removed to show the vascularization of the white and grey matter. (SCHEMATIC.)



PLATE B.—Vertical section of the vertebral canal with the periosteal lining shown in the upper portion. The dura has been drawn away slightly. The vertebral ligaments and venous arrangement may be seen.

In the lower portion the membranes are drawn aside to expose a section of the cord. Still lower spinal nerve with the sheath of the dura.

POLIOMYELITIS

(INFANTILE PARALYSIS)

EDITED BY

F. P. MILLARD, D. O.

TORONTO

Graduate of the American School of Osteopathy, Kirksville, Missouri.

Founder of the National League for the Prevention of Spinal Curvature.

Editor of the Journal of National League for the Prevention of Spinal Curvature.

Anatomical Artist.

Producer of Various Charts; Anatomical Chart of the Spinal and Sympathetic Nerves; Spinal Lesion Charts; The Sympathetic System, Etc., Etc.

Originator of the Water-marked Spine in Stationery for Osteopaths.

Conductor of Tri-Weekly Clinics for Chronic Cases of Infantile Paralysis.

COPYRIGHTED 1918

97 ILLUSTRATIONS
14 FULL PAGE PLATES

PRINTED BY
JOURNAL PRINTING COMPANY
KIRKSVILLE, MISSOURI

N
107

DEDICATED
to the memory of the late
Dr. A. T. STILL
Founder of the Science of Osteopathy

