

**THE FITCHBURG DIRECTORY,
CONTAINING A GENERAL
DIRECTORY OF THE CITIZENS, A
BUSINESS DIRECTORY, AND THE CITY
AND COUNTY REGISTER, NO. III**

Published @ 2017 Trieste Publishing Pty Ltd

ISBN 9780649584567

The Fitchburg Directory, Containing a General Directory of the Citizens, a Business Directory, and the City and County Register, No. III by Various

Except for use in any review, the reproduction or utilisation of this work in whole or in part in any form by any electronic, mechanical or other means, now known or hereafter invented, including xerography, photocopying and recording, or in any information storage or retrieval system, is forbidden without the permission of the publisher, Trieste Publishing Pty Ltd, PO Box 1576 Collingwood, Victoria 3066 Australia.

All rights reserved.

Edited by Trieste Publishing Pty Ltd.
Cover @ 2017

This book is sold subject to the condition that it shall not, by way of trade or otherwise, be lent, re-sold, hired out, or otherwise circulated without the publisher's prior consent in any form or binding or cover other than that in which it is published and without a similar condition including this condition being imposed on the subsequent purchaser.

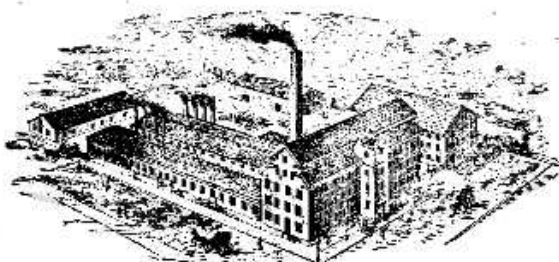
www.triestepublishing.com

VARIOUS

**THE FITCHBURG DIRECTORY,
CONTAINING A GENERAL
DIRECTORY OF THE CITIZENS, A
BUSINESS DIRECTORY, AND THE CITY
AND COUNTY REGISTER, NO. III**

SIMONDS MANUFACTURING CO.

MANUFACTURERS OF



MOWER AND REAPER KNIVES,

COMPLETE OR IN PARTS.

PLANING MACHINE KNIVES

AND A GENERAL VARIETY OF

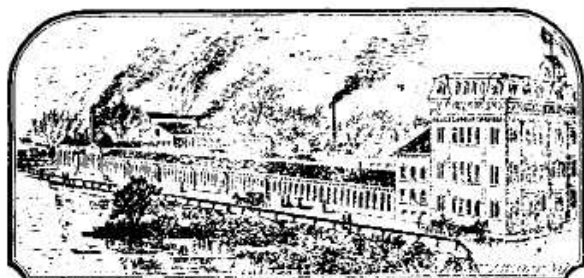
MACHINE KNIVES,

CORNER SUMMER AND NORTH STREETS,

FITCHBURG, MASS.

PUTNAM MACHINE COMPANY,

MANUFACTURERS OF



Engine Lathes, Iron Planers,

UPRIGHT DRILLS, TRAVERSE DRILLS,

MILLING MACHINES,

GEAR CUTTERS, BOLT CUTTERS,

PULLEY LATHES, PATTERN LATHES,

Slotting Machines,

Nut Tapping Machines,

Boring Machines,

MACHINISTS' TOOLS,

PATENT REGULATING CUT-OFF

STEAM ENGINES,

WOODWORTH PLANING MACHINES,

Turbine Water Wheels,

Mill Work,

Shafting, Etc.,

FITCHBURG, MASS.

THE FITCHBURG DIRECTORY,

CONTAINING A

GENERAL DIRECTORY OF THE CITIZENS,

BUSINESS DIRECTORY,

AND THE

CITY AND COUNTY REGISTER.



No. III.

FOR THE YEAR COMMENCING MAY 1, 1874.

FITCHBURG:

PUBLISHED BY LEVI G. CORBIN.
1874.

PRICE, \$1.25.

Entered according to Act of Congress, in the year 1874, by LEVI G. CORBIN, in the office of
the Librarian of Congress, at Washington.

PRINTED BY THE SENTINEL COMPANY, FITCHBURG.

1840, June 9.

DIR. 242

CONTENTS.

Advertising Index.....	4
Abbreviations	17
Assessors	156
Attorneys and Counsellors.....	125
Banks.....	186
Blocks, Buildings, etc.....	16
Business Directory.....	125
Calendar.....	2
Cemeteries.....	163
Churches and Clergymen.....	166
City Government 1874.....	153
Constables.....	155
Coroner.....	183
County Officers.....	180
Courts.....	182
Fire Department.....	157
Halls.....	16
Justices of the Peace.....	181
Military.....	173
Newspapers.....	143
Notaries Public.....	181
Physicians.....	145
Police Court of Fitchburg.....	183
Police Department.....	157
Poor Department.....	162
Population.....	8
Post Office.....	176
Public Library.....	165
Public Roads.....	13
Public Schools.....	163
Railroads.....	175
Sheriff and Deputies.....	180
Societies, etc.....	168
Stock Companies.....	149
Streets, Courts, etc.....	9
Telegraph Offices.....	151
United States Internal Revenue.....	172
United States Pension Agency.....	172
Villages.....	15
Ward Boundaries.....	15
Ward Officers.....	156
Water Department.....	159

Number of names in Directory 1874.....	4,585
Names erased in preparing Directory 1874.....	346
Names added in preparing Directory 187.....	4,635

1874.																
	Sund.	Mon.	Tues.	Wed.	Thurs.	Frid.	Satur.		Sund.	Mon.	Tues.	Wed.	Thurs.	Frid.	Satur.	
JANUARY	4	5	6	7	1	2	3	JULY	5	6	7	1	2	3	4	
	11	12	13	14	15	16	17		12	13	14	15	16	17	18	
	18	19	20	21	22	23	24		19	20	21	22	23	24	25	
	25	26	27	28	29	30	31		26	27	28	29	30	31		
FEB'Y	1	2	3	4	5	6	7	AUGUST	2	3	4	5	6	7	8	
	8	9	10	11	12	13	14		9	10	11	12	13	14	15	
	15	16	17	18	19	20	21		16	17	18	19	20	21	22	
	22	23	24	25	26	27	28		23	24	25	26	27	28	29	
									30	31						
MARCH	1	2	3	4	5	6	7	SEPT'R			1	2	3	4	5	
	8	9	10	11	12	13	14		6	7	8	9	10	11	12	
	15	16	17	18	19	20	21		13	14	15	16	17	18	19	
	22	23	24	25	26	27	28		20	21	22	23	24	25	26	
	29	30	31						27	28	29	30				
APRIL		5	6	7	1	2	3	4	OCT'R					1	2	3
		12	13	14	15	16	17	18		4	5	6	7	8	9	10
		19	20	21	22	23	24	25		11	12	13	14	15	16	17
		26	27	28	29	30				18	19	20	21	22	23	24
										25	26	27	28	29	30	31
MAY	3	4	5	6	7	8	9	NOV'R	1	2	3	4	5	6	7	
	10	11	12	13	14	15	16		8	9	10	11	12	13	14	
	17	18	19	20	21	22	23		15	16	17	18	19	20	21	
	24	25	26	27	28	29	30		22	23	24	25	26	27	28	
	31								29	30						
JUNE		1	2	3	4	5	6	DEC'R			1	2	3	4	5	
	7	8	9	10	11	12	13		6	7	8	9	10	11	12	
	14	15	16	17	18	19	20		13	14	15	16	17	18	19	
	21	22	23	24	25	26	27		20	21	22	23	24	25	26	
	28	29	30						27	28	29	30	31			

BENT & KETTELL,
CIVIL ENGINEERS AND SURVEYORS,
 No. 14 MAIN STREET, FITCHBURG, MASS.

INDEX TO ADVERTISEMENTS.

	PAGE.
Allen C. H.	202
Allen Wm. H.	210
Alexander & Co.	237
Andrews H.	193
Arnold F. H.	224
Balcom F. S.	196
Baldwin, Joseph.	219
Barker L.	245
Battles J. A.	217
Battles O. A.	234
Beckwith Lumber Co. back cov.	
Bemis Cyrus K.	opposite 125
Bennett H. K.	191
Bent & Kettle	3
Bickford J. D. & Co.	212
Blanchard J. M.	235
Blood T. S.	192
Boston, Clinton & Fitchburg Railroad	7
Brewer G. S.	233
Briggs John W.	233
Brigham H. H.	191
Brigham S. E.	227
Brown C. H. & Co.	245
Brown Chester F.	202
Brown Franklin.	front cover
Brown L. R. & Son	200
Brown L. J.	front cover
Bruce J. F.	194
Bullock & Hill	218
Caldwell T. C.	225
Cann Geo. W.	190
Chaffin J. F.	225
Clark W. W.	184
Cobe Max	229
Coburn Manly	238
Colman J. J.	204
Colony Geo. D.	191
Corey D. A.	225
Cowdin & Walker.	213
Crocker, Burbank & Co.	247
Cross Daniel	214
Cummings M. W.	221
Carrier E. C.	237
Cushing J. & Co.	6
Davis A. G.	236
Davis Jonathan D.	227
Davis H. L.	218
Day A. B.	208

	PAGE.
Dennis Charles B.	7
Derby James P.	cover
Dillon D. M. & Co.	246
Dole S. M. & E. B.	200
Donnelly John G.	216
Dow R. & Co.	bottom lines
Dunn Wm. A.	198
Dyer H. B.	197
Eager & Day	192
Eager W. L.	200
Eaton A. B.	199
Eddy B. W. & Co.	205
Edwards Wm & Co.	193
Ed. Richardson Scythe Co.	240
Emory S. P.	201
Kwen Wm.	229
Farnsworth Brothers	221
Fessenden F. G.	190
Fitchburg National Bank.	187
Fitchburg Novelty Works.	239
Fitchburg Mut. Fire Ins. Co.	185
Fitchburg Savings Bank.	187
Fitchburg Flour Co.	244
Fitchburg Machine Co. back colored	
Fitchburg Paper Co.	242
Fletcher C. A.	opp. 125
Fletcher Roby	202
Flint Charles M.	239
Foley J. P.	192
Fortier Z. & Co.	201
Foster Samuel	221
Francis Henry M.	208
French H. R.	228
Frost S. G.	222
Galpin Samuel W.	196
Garfield John.	235
Garfield & Proctor.	back cover
Gibbs A. B.	222
Gibbs Joseph.	213
Gilchrist Wm.	195
Gleason S. F.	233
Goodrich H. A. & Co. bottom lines	
Green Andrew J.	228
Greene H. G.	back cover
Guy T. F. & W. P.	front cover
Hardy Wm. A.	opp. 152
Hardy & Woodruff	209

	PAGE.
Haskins Machine Co. front colored	
Hayes G. H. back cover	
Haynes Stillman	189
Heywood Wilson & Co.	242
Hitchcock Alfred O.	190
Hitchcock Henry S.	190
Hodgman E. L.	200
Holt A. A.	202
Horton & Houghton	196
Holman Silas.	192
Howard John C.	213
Howard & Nichols. back cover	
Hutchins Geo. O.	233
Jackson Joseph	229
Janes Henry D.	224
Jillson H. D.	191
Johnson C. N.	217
Jones Brothers	opp. 124
Jones J. E. & Co.	240
Jones James C.	197
Joy Francis B.	192
Kellogg G. H.	235
Kendall S. Chapin.	238
Keniston J. F. & Co.	217
Kimball H. J.	216
Kimball John W.	208
Kittredge & Saxton, front cover	
Knawiton Geo. B.	220
Lawton A. S. & Co.	208
Lawrence A. B. & Co.	220
Leathe W. M.	235
Lennon Edward	212
Litch & Sawtell	193
Lowc John	203
Lowe W. H. & I. A. & Co.	203
Manning J. E.	219
Merriam D. H.	189
Miller Alfred	190
Morse H. G.	226
Morse E. H.	206
Morse M. F. & Co. back cover	
Moulton J. C.	218
Murphy J. C.	199
Myrick John D.	236
New England Machine Co.	241
Norcross Amasa	189
Palmer T. & Son	192
Parks & Carpenter	195
Patch Lyman	219
Piper H. F.	231
Pitts L. & Son	front cover
Pool E. G.	194
Pride Wm. M. & Co.	201
Priest Charles A.	241
Proctor J. B.	237
Putnam Machine Co. front colored	
Rice Charles H.	190

	PAGE.
Richmond & Littlehale	224
Robbins Geo. & Co.	215
Rollstone Nat. Bank	186
Rollstone Machine Works back colored	
Rugg Herbert N. front cover	
Russell Francis.	226
Safety Fund Nat. Bank	188
Sawtell E. B.	180
Sawtell J. M.	211
Sawyer A. M.	222
Sawyer Sylvanus	205
Sears E. B. back cover	
Sentinel Printing Co.	230
Shattuck F. D.	204
Shattuck C. H.	210
Sheldon J. P.	210
Shepstone J. A.	227
Sidney A. W.	191
Simonds Manfg. Co. front col'd	
Smith & Page	243
Smith W. W.	229
Spear A. A.	256
Spencer E. H.	216
Spinney C. W.	206
Sprague L. & Co.	214
Stark R. P.	209
Stratton & Hubbard	202
Taylor & Hutchinson	215
Tivnin T. H.	199
Tolman C. S.	233
Tolman F. C.	197
Torrey Geo. A.	189
Tyrrell H. P.	239
Walker Edward	212
Wallace D. G.	198
Wallace G. W.	204
Wallace Rodney	242
Walter Heywood Chair Co.	248
Ware & Snow	189
Waterhouse Jos	209
West C. S.	232
West Mrs. M. S.	206
Wetherbee & Derby	224
Wetherbee W. S.	225
Whitney Albert E.	215
Whitney Andrew	223
Whitney A. G.	209
Whitney F. M. front cover	
White Ivers	194
Whittier D. B.	191
Wilbur & Tyler	opp. 153
Wilder & Brown	6
Wood Frank A.	226
Wood J. B. & Co.	222
Wood J. K. P.	193
Wor. North Saving. Inst'n.	186
Wright & Fairbanks front cover	
Wyman C. H.	211