

**LEUCORRHOEA, ITS  
CONCOMITANT  
SYMPTOMS, AND ITS  
HOMOEOPATHIC TREATMENT**

Published @ 2017 Trieste Publishing Pty Ltd

ISBN 9780649379538

Leucorrhoea, Its Concomitant Symptoms, and Its Homoeopathic Treatment by A. M. Cushing

Except for use in any review, the reproduction or utilisation of this work in whole or in part in any form by any electronic, mechanical or other means, now known or hereafter invented, including xerography, photocopying and recording, or in any information storage or retrieval system, is forbidden without the permission of the publisher, Trieste Publishing Pty Ltd, PO Box 1576 Collingwood, Victoria 3066 Australia.

All rights reserved.

Edited by Trieste Publishing Pty Ltd.  
Cover @ 2017

This book is sold subject to the condition that it shall not, by way of trade or otherwise, be lent, re-sold, hired out, or otherwise circulated without the publisher's prior consent in any form or binding or cover other than that in which it is published and without a similar condition including this condition being imposed on the subsequent purchaser.

[www.triestepublishing.com](http://www.triestepublishing.com)

**A. M. CUSHING**

**LEUCORRHOEA, ITS  
CONCOMITANT  
SYMPTOMS, AND ITS  
HOMOEOPATHIC TREATMENT**



**LEUCORRHŒA,**  
ITS  
**CONCOMITANT SYMPTOMS,**  
AND ITS  
**HOMŒOPATHIC TREATMENT.**

---

BY  
**A. M. CUSHING, M.D.**

---

LYNN, MASS.  
THOS. P. NICHOLS, PRINTER,  
No. 24 MARKET STREET.

1872.

*MD*

LANE 1872

---

Entered according to Act of Congress, in the year 1872, by

A. M. CUSHING,

In the Office of Clerk of the District Court of the United States, for the  
District of Massachusetts.

---

AT 11  
298  
1872

## INTRODUCTORY.

---

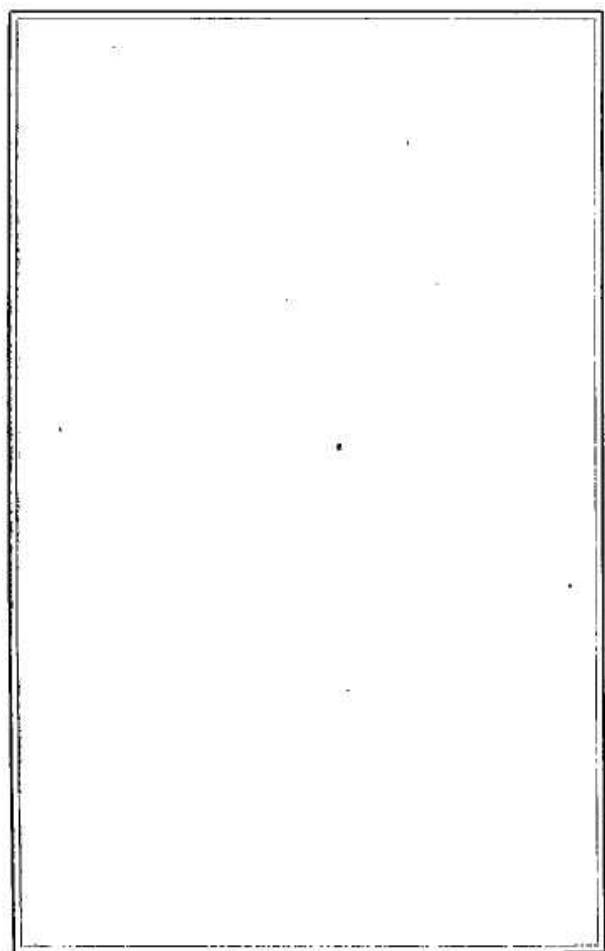
This little work is a compilation from *all* the works at my command, interspersed with the clinical experience of sixteen years' practice. It is intended to save the busy practitioner many a weary hour of study, and to guide the beginner and student along the road to true Scientific Healing.

Study, learn, prescribe. If the low dilutions fail you, *don't be afraid to GO UP.*

The blank space after each remedy is left for additions or alterations, instead of blank interleaves. It is hoped that every physician who may possess this book will make all possible additions, and all necessary alterations, till finally it may become a very valuable work.

• A. M. C.

59112





## LEUCORRHŒA.

### Aconite.

*Copious, tenacious, yellowish leucorrhœa, with much irritability of the system, fever, thirst, vertigo on rising up. Bloody leucorrhœa. Leucorrhœa relieved by cold washes, especially after rheumatism. Pains worse at night. Menses increased and profuse; red urine; watery diarrhœa; white stools.*

### Acid Mur.

*Leucorrhœa, with exceeding soreness of the anus, either from piles or fissure. She cannot bear the least touch upon the anus, which often itches violently, and is not relieved by scratching. Menses too early and profuse. Frequent and profuse urination. Watery or bloody stool, with violent smarting and burning in the rectum and anus.*

### Acid Nit.

*Leucorrhœa, consisting of mucus which can be drawn out; greenish mucus; cherry brown; fetid; flesh colored;*

offensive; like brown water; after the menses, or mercurial treatment. Frequently *violent itching* of the genitals; always coming on towards evening; sometimes when walking. Stitches in the vagina, shooting upwards. Takes cold easily, which aggravates the leucorrhœa and itching. *Menses too early and profuse.* During the menses, toothache. Brown urine, which has a strong odor, and stains the linen brown. *Desire to urinate, at night,* with cutting pain in the abdomen. *Nightly desire to urinate.* Painless suppression of urine. *Fetid urine.* *Hard, scanty stool.* *Long pressing when going to stool.* *Constant unsuccessful desire for stool.* *Bloody stool.* Epistaxis at *night*; never in the day time. She cannot sleep after two o'clock in the morning. She awakens suddenly from sleep, greatly startled at some imaginary frightful event. *See leucorrhœa immediately after menses.*

#### Acid Phos.

Thin, acrid, mucous leucorrhœa. *Leucorrhœa after the menses* *Desire to urinate,* with scanty emission. *Frequent urination.* *Frequent desire for stool.* *White gray diarrhœa.*

#### Acid Sul.

Painless leucorrhœa; *acid, burning leucorrhœa.* *Bloody mucous from the vagina.* *Menses too early.*

Menses too late, with pain in the small of the back and in the abdomen. *Retention of urine and stool.*

### Æsculus Hip.

Leucorrhœa, with lameness of the back across the sacro iliac articulations. The back gives out in walking even but a little ways. The pain extends from the back to the abdomen, accompanied by piles and with burning, tenesmus and itching of the rectum. *The cause of leucorrhœa;*

*discharge from the menstrual period, increased by walking, &c. red, yellow color, thick & sticky, corrodes the skin, with itching in the os uteri & vagina.*

### Agnus Castus.

Leucorrhœa. Suppression of the menses. Urine frequent, abundant, and dark color. Loose stools. *Deficient secretion of milk in lying-in women.*

### Aletris Far.

Leucorrhœa with debility, with great tendency to abortion. Premature and profuse menses.