

**RAFINESQUE; A
SKETCH OF HIS LIFE,
WITH BIBLIOGRAPHY**

Published @ 2017 Trieste Publishing Pty Ltd

ISBN 9780649107513

Rafinesque; a sketch of his life, with bibliography by T. J. Fitzpatrick

Except for use in any review, the reproduction or utilisation of this work in whole or in part in any form by any electronic, mechanical or other means, now known or hereafter invented, including xerography, photocopying and recording, or in any information storage or retrieval system, is forbidden without the permission of the publisher, Trieste Publishing Pty Ltd, PO Box 1576 Collingwood, Victoria 3066 Australia.

All rights reserved.

Edited by Trieste Publishing Pty Ltd.
Cover @ 2017

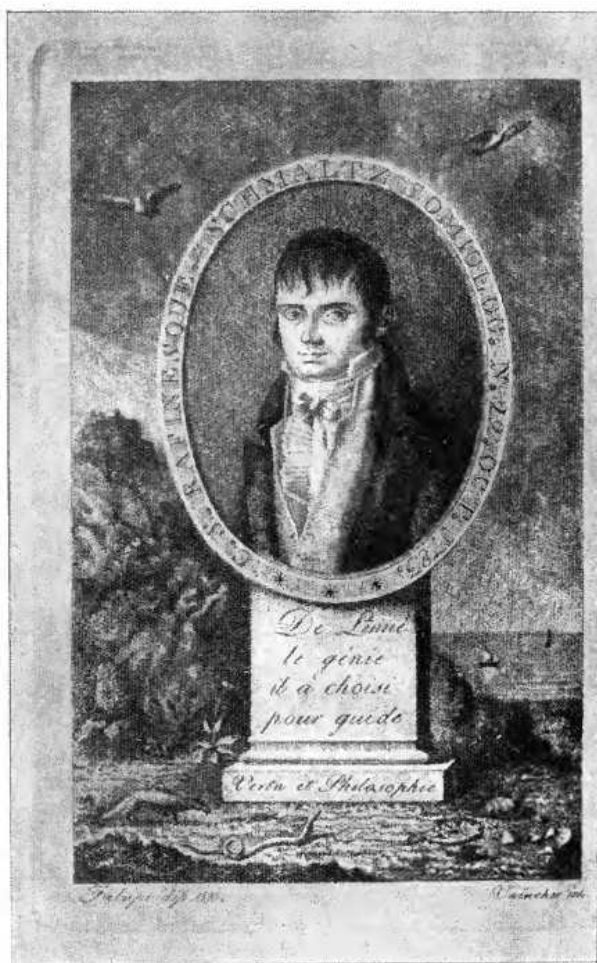
This book is sold subject to the condition that it shall not, by way of trade or otherwise, be lent, re-sold, hired out, or otherwise circulated without the publisher's prior consent in any form or binding or cover other than that in which it is published and without a similar condition including this condition being imposed on the subsequent purchaser.

www.triestepublishing.com

T. J. FITZPATRICK

**RAFINESQUE; A
SKETCH OF HIS LIFE,
WITH BIBLIOGRAPHY**

PLATE I



Portrait of C. S. Rafinesque, from the "Analyse de la Nature"

S. B.
D. 1384
41

RAFINESQUE

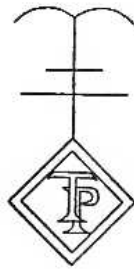
A SKETCH OF HIS LIFE

WITH

BIBLIOGRAPHY

By T. J. FITZPATRICK, M. S.

Fellow of the American Association for the Advancement of Science; Fellow of the Iowa Academy of Science; Member of the Torrey Botanical Club; Member of the American Historical Association, Etc.

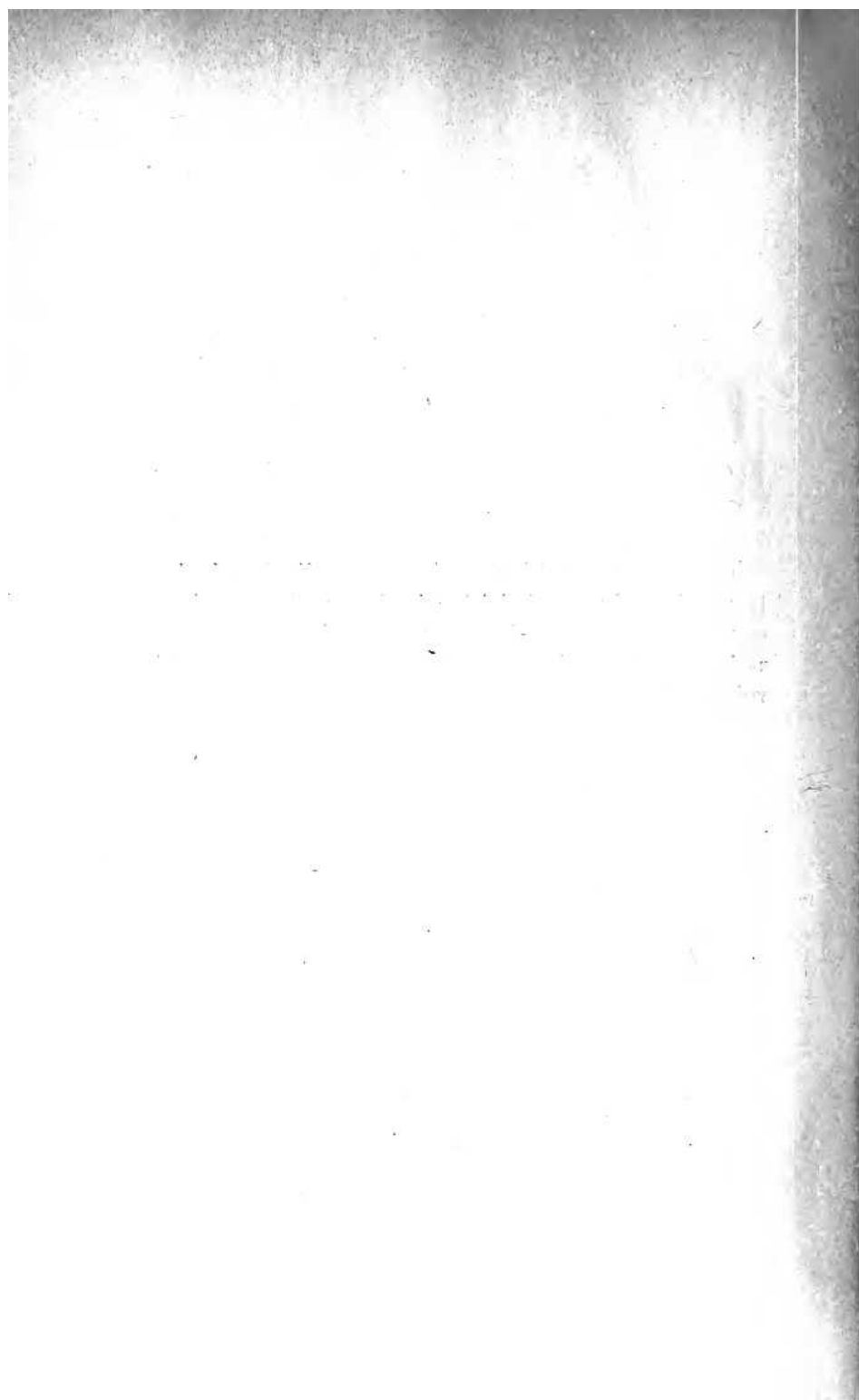


11-244
20

DES MOINES
THE HISTORICAL DEPARTMENT OF IOWA
1911

FOREWORD

The inception of this work is to be credited to the late Honorable Charles Aldrich who knew of the writer's interest in the career of Raffles and in Rafflesiana and only to his kindly request and persistent urging is this volume due.



CONTENTS

CONSTANTINE SAMUEL RAFINESQUE — A SKETCH	11
BIBLIOGRAPHY OF C. S. RAFINESQUE	65
BIBLIOTHECA RAFINESQUIANA	223
PORTRAITS OF RAFINESQUE	240



RAFINESQUE—A SKETCH