

**THE SPLENDID
BOOK OF
ENGINEERING**

Published @ 2017 Trieste Publishing Pty Ltd

ISBN 9780649119509

The splendid book of engineering by G. Gibbard Jackson

Except for use in any review, the reproduction or utilisation of this work in whole or in part in any form by any electronic, mechanical or other means, now known or hereafter invented, including xerography, photocopying and recording, or in any information storage or retrieval system, is forbidden without the permission of the publisher, Trieste Publishing Pty Ltd, PO Box 1576 Collingwood, Victoria 3066 Australia.

All rights reserved.

Edited by Trieste Publishing Pty Ltd.
Cover @ 2017

This book is sold subject to the condition that it shall not, by way of trade or otherwise, be lent, re-sold, hired out, or otherwise circulated without the publisher's prior consent in any form or binding or cover other than that in which it is published and without a similar condition including this condition being imposed on the subsequent purchaser.

www.triestepublishing.com

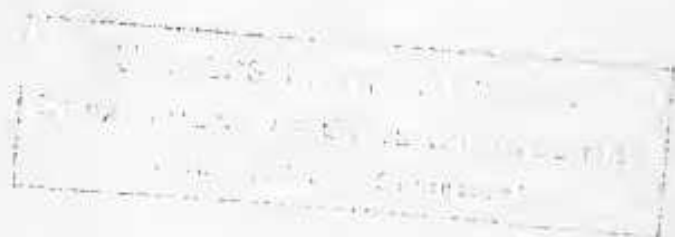
G. GIBBARD JACKSON

**THE SPLENDID
BOOK OF
ENGINEERING**

THE SPLENDID BOOK OF ENGINEERING

BY

G. GIBBARD JACKSON



LONDON
SAMPSON LOW, MARSTON & CO., LTD.



MADE AND PRINTED IN GREAT BRITAIN BY FURNELL AND SONS
PAULTON (SOMERSET) AND LONDON

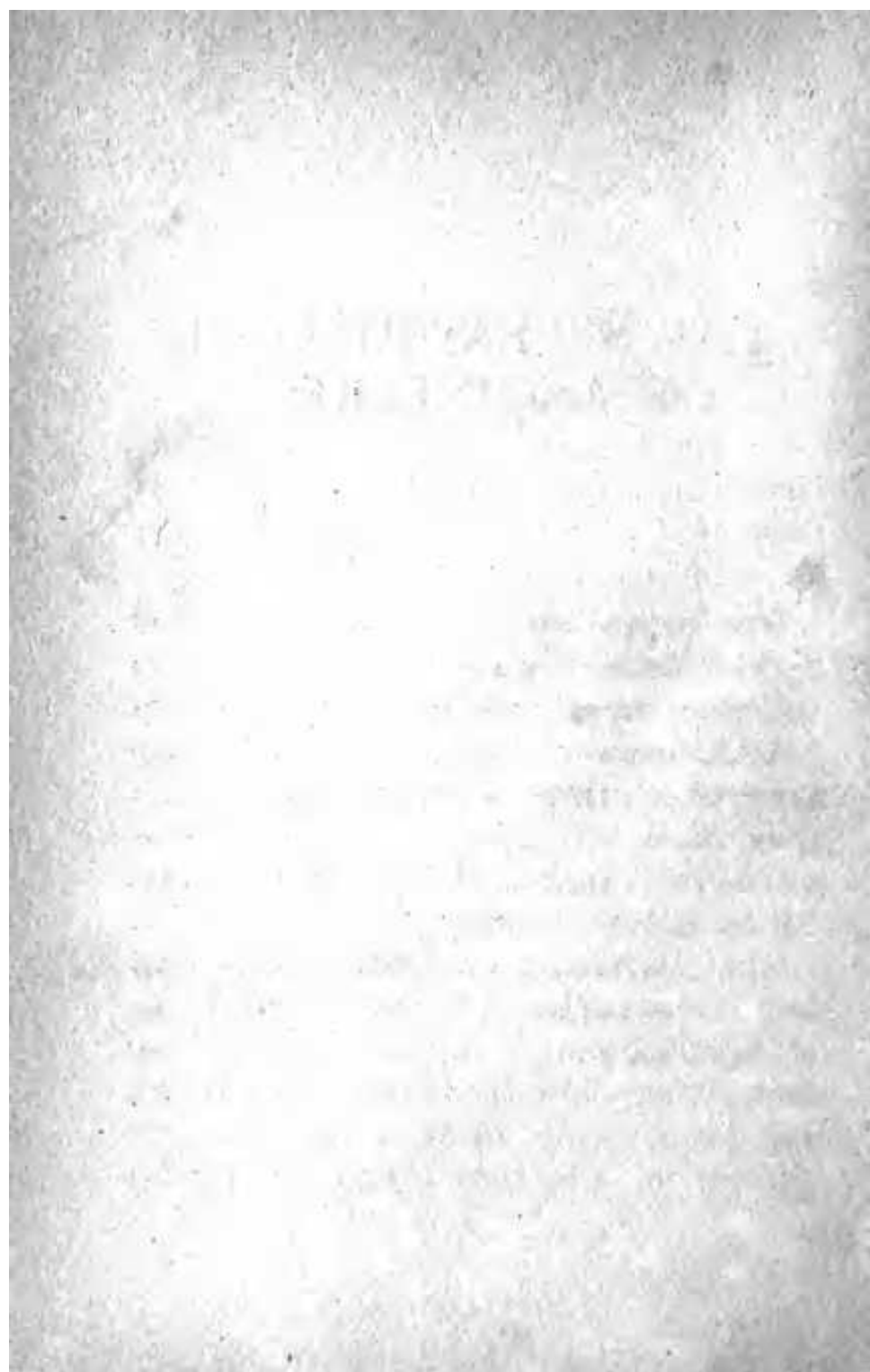
CONTENTS

	PAGE
I. FAMOUS BRIDGES	9
II. LIGHTING LONDON	23
III. A LOCOMOTIVE THAT FEEDS ITSELF	33
IV. TUNNELS AND THEIR MAKING	37
V. BY ROAD AND RAIL	48
VI. FLOATING DOCKS	55
VII. SOME TUNNELLING FEATS . .	58
VIII. THE EVOLUTION OF THE TELE- PHONES	68
IX. THE SPEED BOAT	81
X. THE RIVER TRAINS	83
XI. SPEED AND THE ENGINEER . .	92
XII. THE MARVELLOUS TELEPRINTER	102
XIII. THE WELAND CANAL	104
XIV. THE RAILPLANE	109
XV. THE HUMAN SALAMANDERS . .	118
XVI. THE ROMANCE OF THE BARRAGE	124
XVII. A CHALLENGER OF THE STEAM LOCOMOTIVE	133

	PAGE
XVIII. THE MARVELLOUS TELE- WRITER	146
XIX. THE ROMANCE OF THE PANAMA CANAL	148
XX. THE DEVELOPMENT OF THE STATIONARY ENGINE	160
XXI. HOW THE ENGINEER HELPS THE RAILWAY	166
XXII. SNAPPING THE MAILS	179
XXIII. THE ROMANCE OF THE BOX	181
XXIV. THE WONDERFUL FATHOMETER	189

ILLUSTRATIONS

	FACE PAGE
NEWCASTLE BRIDGE GATESHEAD ARCH	16
QUEBEC BRIDGE	17
SEVERN TUNNEL, WELSH ENTRANCE	32
CONSTRUCTING THE METROPOLITAN RAILWAY	33
A SMALL PROVINCIAL TELEPHONE EXCHANGE	64
A TELEPHONE CALL BOX	65
RACING MOTOR BOATS AT FULL SPEED	80
ONE OF THE LATEST TYPES OF SPEED BOAT	81
R.M.S. "MAURETANIA"	96
THE ENGINES OF M.V. "BRITANNIC"	97
DIESEL ENGINE	112
A MARINE TYPE OIL ENGINE	113
THE GAILLARD CUT, PANAMA CANAL	144
THE CRISTOBAL TERMINAL DOCKS, PANAMA CANAL	145
A LOCOMOTIVE CRANE	160
PICKING UP THE MAILS	161



THE SPLENDID BOOK OF ENGINEERING

I

FAMOUS BRIDGES

THE completion of the great bridge over Sydney Harbour marks the end of one of the greatest engineering ventures of the present century. The authorities would not agree to a bridge with less than a single span as it was desired to preserve that wonderful entrance to one of the finest harbours in the world.

The contract for the bridge was secured by the famous firm of Dorman, Long & Co., of Middlesborough, in the face of stern competition. The total cost of the bridge and its approach roads is not less than £6,000,000. The total length of the main