

**MANUAL OF SALMON AND TROUT
HATCHING, OR, AN EXPLANATION OF
THE FISH-HATCHING APPARATUS AT
THE ROYAL HORTICULTURAL GARDENS,
THE SOUTH KENSINGTON MUSEUM,
ZOOLOGICAL GARDENS, &C., &C.**

Published @ 2017 Trieste Publishing Pty Ltd

ISBN 9780649296507

Manual of salmon and trout hatching, or, An explanation of the fish-hatching apparatus at the Royal Horticultural Gardens, the South Kensington Museum, Zoological Gardens, &c., &c. by Francis Trevelyan Buckland

Except for use in any review, the reproduction or utilisation of this work in whole or in part in any form by any electronic, mechanical or other means, now known or hereafter invented, including xerography, photocopying and recording, or in any information storage or retrieval system, is forbidden without the permission of the publisher, Trieste Publishing Pty Ltd, PO Box 1576 Collingwood, Victoria 3066 Australia.

All rights reserved.

Edited by Trieste Publishing Pty Ltd.
Cover @ 2017

This book is sold subject to the condition that it shall not, by way of trade or otherwise, be lent, re-sold, hired out, or otherwise circulated without the publisher's prior consent in any form or binding or cover other than that in which it is published and without a similar condition including this condition being imposed on the subsequent purchaser.

www.triestepublishing.com

FRANCIS TREVELYAN BUCKLAND

**MANUAL OF SALMON AND TROUT
HATCHING, OR, AN EXPLANATION OF
THE FISH-HATCHING APPARATUS AT
THE ROYAL HORTICULTURAL GARDENS,
THE SOUTH KENSINGTON MUSEUM,
ZOOLOGICAL GARDENS, &C., &C.**

MANUAL
OF
SALMON AND TROUT HATCHING.

J. G. B. B. B.



MANUAL
OF
SALMON AND TROUT HATCHING,
OR AN EXPLANATION OF THE
FISH-HATCHING APPARATUS

BY THE
ROYAL HORTICULTURAL GARDENS,
THE SOUTH KENSINGTON MUSEUM,
ZOOLOGICAL GARDENS, &c., &c.

BY
FRANK BUCKLAND,
M.A., M.R.C.S., F.R.S.,
Late Assistant-Surgeon and Life Guards.

LONDON:
TINSLEY BROTHERS, 18, CATHERINE ST., STRAND.
1864.

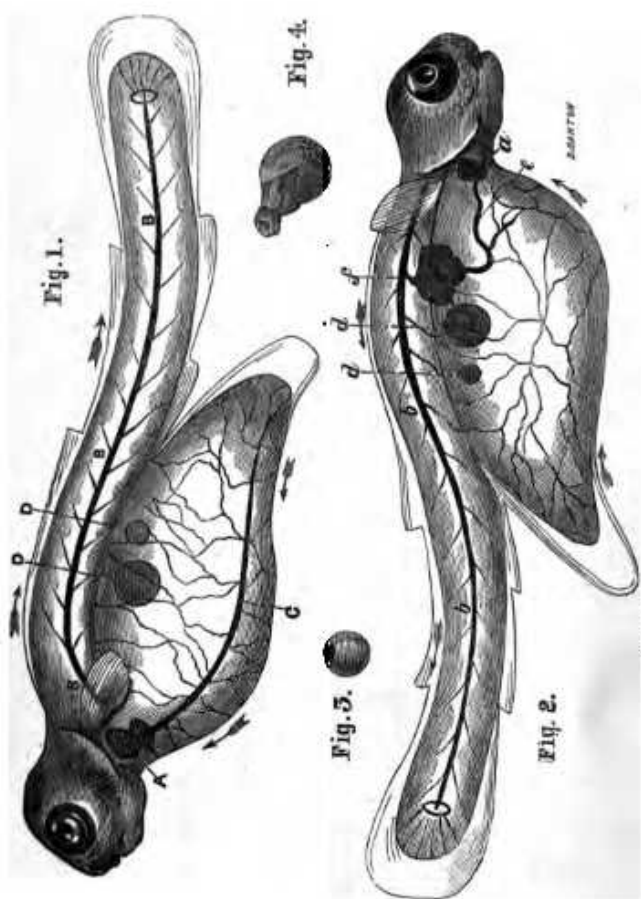


Fig. 1.

Fig. 4.

Fig. 3.

Fig. 2.

YOUNG SALMON, ABOUT A WEEK OLD.

EXPLANATION OF THE FIGURES.

FIG. 1

Shows the left side of the fish (magnified 120 diameters).

- a. The heart.
- b. Main trunk artery.
- c. Large vein.
- d. Oil globules, only two of which are introduced, for the sake of distinctness.

FIG. 2.

Showing the right side of the fish.

- a. The heart.
- b. Main-trunk artery.
- c. The liver.
- d. Oil globules.
- e. Large vein from liver to heart.
- f. Branch from main artery to liver.

FIG. 3.—Salmon Egg.

FIG. 4.—Young Salmon hatching out.

NOTE.—The bag attached to the fish contains the nourishment, which is gradually absorbed into its body. As the fish gets larger the bag gets smaller, and the fish does not feed till the bag is quite gone, which is about six weeks or two months after it is born.—See pages 22 & 28.

•

•

PREFACE.

THIS Manual will be found to contain a general explanation of hatching fish by artificial means, in order that those who examine the various apparatus under my management in London shall understand what is going on.

I am much indebted to my friend H. J. B. Hancock, Esq., for his kindness in superintending the drawing of the woodcut in the Manual, and also for his valuable assistance in other scientific matters.

Those who wish to see fish-hatching on a large scale, should pay a visit to the apparatus in the greenhouse of my good friend S. Ponder, Esq., of Elm Grove, Hampton