

**MISSOURI BOTANICAL
GARDEN: FIFTEEN
ANNUAL REPORT**

Published @ 2017 Trieste Publishing Pty Ltd

ISBN 9780649212507

Missouri Botanical Garden: Fifteen Annual report by Various

Except for use in any review, the reproduction or utilisation of this work in whole or in part in any form by any electronic, mechanical or other means, now known or hereafter invented, including xerography, photocopying and recording, or in any information storage or retrieval system, is forbidden without the permission of the publisher, Trieste Publishing Pty Ltd, PO Box 1576 Collingwood, Victoria 3066 Australia.

All rights reserved.

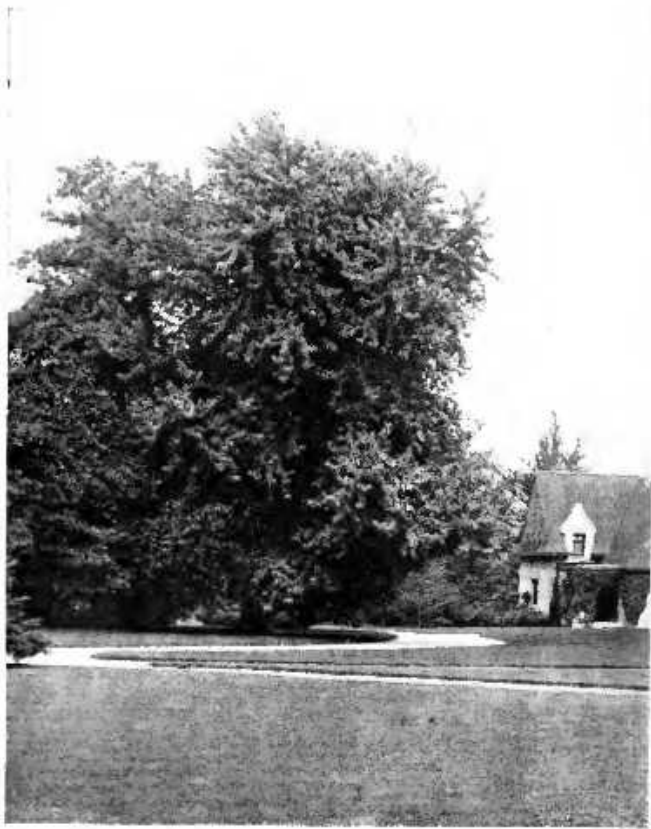
Edited by Trieste Publishing Pty Ltd.
Cover @ 2017

This book is sold subject to the condition that it shall not, by way of trade or otherwise, be lent, re-sold, hired out, or otherwise circulated without the publisher's prior consent in any form or binding or cover other than that in which it is published and without a similar condition including this condition being imposed on the subsequent purchaser.

www.triestepublishing.com

VARIOUS

**MISSOURI BOTANICAL
GARDEN: FIFTEEN
ANNUAL REPORT**



MUSEUM GATE HOUSE—FROM THE LAWN.

P. 2101
M

MISSOURI
BOTANICAL GARDEN.
FIFTEENTH ANNUAL REPORT.

62268
7 | 6 | 04

ST. LOUIS, MO.:
PUBLISHED BY THE BOARD OF TRUSTEES.
1904.

BOARD OF TRUSTEES OF THE MISSOURI
BOTANICAL GARDEN.

President
RUFUS J. LACKLAND.

Vice-President,
DAVID F. KAIME.

EDWARD C. ELIOT,¹

JOHN GREEN, M. D.

GEORGE C. HITCHCOCK,²

LEONARD MATTHEWS.

WILLIAM H. H. PETTUS.

JOHN F. SHEPLEY.

DAVID S. H. SMITH.

EDWARDS WHITAKER.

WINFIELD S. CHAPLIN.

Chancellor of Washington University.*

EDWIN HARRISON,³

President of The Academy of Science of St. Louis.*

DANIEL S. TUTTLE,

Bishop of the Diocese of Missouri.*

ROLLA WELLS,

Mayor of the City of St. Louis.*

CALVIN M. WOODWARD,⁴

President of the Board of Public Schools of St. Louis.*

A. D. CUNNINGHAM, Secretary.

* *Ex-officio.*

¹ Elected November 11, 1903, to fill the vacancy caused by the death, on October 6th, of Dr. J. B. Johnson, one of the Trustees named by Mr. Shaw.

² Elected November 11, 1903, to fill the vacancy caused by the death, on June 9th, of Mr. Joseph Branch, one of the Trustees named by Mr. Shaw.

³ Elected President of The Academy of Science, February 1, 1904, to succeed Mr. Henry W. Eliot, who had held that office for two years.

⁴ Elected President of the Board of Public Schools of St. Louis, October 13, 1903, to succeed Dr. William Taussig, who had held that office for one year.

P R E F A C E.

Under direction of the Board of Trustees, the fifteenth annual report of the Missouri Botanical Garden is presented to the public.

The fourteenth volume was issued on October 8th, 1903, on which date separates of Mr. Rehder's monograph of *Lonicera* were also distributed.

These reports are sent to scientific institutions and journals in exchange for publications or specimens desirable for the Garden, and, when possible, reprints of the botanical articles they contain are presented to botanists occupied with a study of the subjects they refer to. Any of the Garden publications not out of print may be purchased at approximately the cost of publication from A. I. Eriksson, Tufts College, Mass.; R. Friedländer & Sohn, Berlin, Germany; W. Wesley & Son, London, England; or the undersigned.

WILLIAM TRELEASE.

ST. LOUIS, MO., February 15, 1904.



CONTENTS.

	PAGE.
1. REPORTS FOR THE YEAR 1903:—	
a. Report of the Officers of the Board	7
b. Fifteenth Annual Report of the Director	13
2. SCIENTIFIC PAPERS:—	
a. An ecological comparison of some typical swamp areas.— <i>By Samuel Monds Coulter</i>	39
b. Two fungi growing in holes made by wood-boring insects.— <i>By Perley Spaulding</i>	73
c. An ecologically aberrant Begonia.— <i>By William Trelease</i>	79
d. Aberrant veil remnants in some edible agarics.— <i>By William Trelease</i>	83
3. LIBRARY CONTRIBUTIONS:—	
a. A list of books and papers published from the Missouri Botanical Garden or by its employees, or based chiefly on work done by aid of the facilities of the Garden, from January, 1899, to December, 1903, inclusive.— <i>By William Trelease</i>	87
b. A supplementary list of serial publications received at the library of the Missouri Botanical Garden.— <i>By William Trelease</i>	98

LIST OF ILLUSTRATIONS.

Frontispiece: Museum gate house, from the lawn.	
Pitcher plants— <i>Sarracenia Drummondii</i>	Facing p. 7
Bromeliad house — Air plants	“ “ 13
North American tract — Cat-tails and water	“ “ 23
Mexican house — <i>Oncidium luridum</i>	“ “ 26
Orchid blossoms — <i>Trichopilia suavis</i>	“ “ 30
East Indian house — <i>Nepenthes</i>	“ “ 35
Plates 1-24. Swamp vegetation	Following p. 72
Plates 25-27. Fungi following wood borers	“ “ 78
Plates 28-29. <i>Begonia unifolia</i>	“ “ 82
Plates 30-39. Veil characters of agarics	“ “ 86