

**MATERIALS FOR THE STUDY OF  
THE ENGLISH DRAMA  
(EXCLUDING SHAKESPEARE); A  
SELECTED LIST OF BOOKS IN THE  
NEWBERRY LIBRARY**

Published @ 2017 Trieste Publishing Pty Ltd

ISBN 9780649426485

Materials for the Study of the English Drama (Excluding Shakespeare); A Selected List of Books in the Newberry Library by Newberry Library

Except for use in any review, the reproduction or utilisation of this work in whole or in part in any form by any electronic, mechanical or other means, now known or hereafter invented, including xerography, photocopying and recording, or in any information storage or retrieval system, is forbidden without the permission of the publisher, Trieste Publishing Pty Ltd, PO Box 1576 Collingwood, Victoria 3066 Australia.

All rights reserved.

Edited by Trieste Publishing Pty Ltd.  
Cover @ 2017

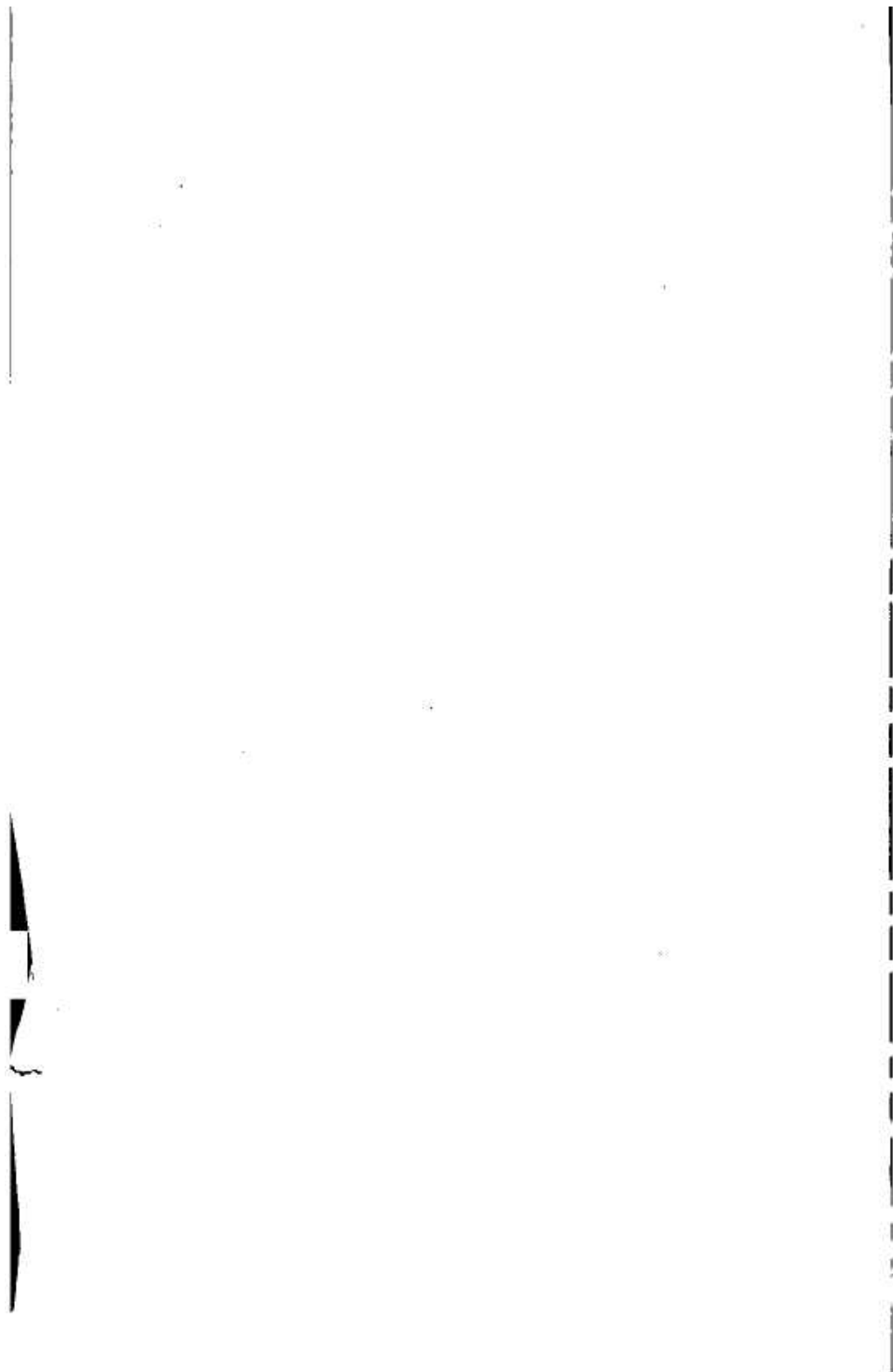
This book is sold subject to the condition that it shall not, by way of trade or otherwise, be lent, re-sold, hired out, or otherwise circulated without the publisher's prior consent in any form or binding or cover other than that in which it is published and without a similar condition including this condition being imposed on the subsequent purchaser.

[www.triestepublishing.com](http://www.triestepublishing.com)

# **NEWBERRY LIBRARY**

## **MATERIALS FOR THE STUDY OF THE ENGLISH DRAMA (EXCLUDING SHAKESPEARE); A SELECTED LIST OF BOOKS IN THE NEWBERRY LIBRARY**





261

Z  
733  
.N57  
A3  
no 1

234

PUBLICATIONS OF THE NEWBERRY LIBRARY  
NUMBER I



**MATERIALS FOR THE STUDY OF  
THE ENGLISH DRAMA**

**(EXCLUDING SHAKESPEARE)**

**A SELECTED LIST OF BOOKS IN  
THE NEWBERRY LIBRARY**

---

**THE NEWBERRY LIBRARY  
CHICAGO, ILLINOIS**



COPYRIGHT 1912 BY  
THE NEWBERRY LIBRARY

Published January 1912

Z.  
733  
.N57  
A3  
NO 1

## TRUSTEES OF THE NEWBERRY LIBRARY

CHARTER MEMBERS, APRIL 13, 1892

HON. GEORGE E. ADAMS . . . . .  
MR. EDWARD E. AYER . . . . . Resigned, January 3, 1911  
MR. ELIPHALET W. BLATCHFORD . . . . .  
MR. WILLIAM HARRISON BRADLEY Resigned, May 20, 1901  
MR. DANIEL GOODWIN . . . . . Resigned, November 7, 1898  
MR. FRANKLIN H. HEAD . . . . .  
HON. EDWARD S. ISHAM . . . . . Died, February 16, 1902  
GEN. ALEXANDER C. MCCLURG . . . . . Died, April 15, 1901  
HON. FRANKLIN MACVEAGH . . . . . Resigned, February 27, 1896  
GEN. WALTER C. NEWBERRY . . . . .  
HON. LAMBERT TREE . . . . . Died, October 9, 1910  
MR. HENRY J. WILLING . . . . . Died, September 28, 1903  
MR. JOHN P. WILSON . . . . .

---

MR. BRYAN LATHROP . . . . . Elected, June 1, 1896  
MR. GEORGE MANIERRE . . . . . Elected, December 5, 1898  
MR. MOSES J. WENTWORTH . . . . . Elected, June 3, 1901  
MR. HORACE H. MARTIN . . . . . Elected, November 4, 1901  
MR. DAVID B. JONES . . . . . Elected, May 5, 1902  
MR. JOHN A. SPOOR . . . . . Elected, January 11, 1904  
MR. JOHN P. WILSON, JR. . . . . Elected, January 3, 1911  
MR. EDWARD L. RYERSON . . . . . Elected, March 6, 1911

### OFFICERS, 1911

#### *President*

ELIPHALET W. BLATCHFORD

#### *First Vice-President*

GEORGE E. ADAMS

#### *Second Vice-President*

HORACE H. MARTIN

#### *Secretary and Financial Agent*

JESSE L. MOSS

#### *Librarian*

WILLIAM N. C. CARLTON, M.A.

## INTRODUCTORY NOTE

This list is intended primarily to facilitate the work and economize the time of the increasing number of readers and students of the drama who use The Newberry Library. It has, however, certain limitations which must be borne in mind when consulting it. As the title-page indicates, it is a selected and not a complete exhibit of the resources of the Library on the subject of the English Drama and Stage. Magazine articles are not included because they may readily be found by means of the numerous general and special printed indexes to periodicals, etc. The literature relating to Shakespeare is omitted for the reason that the Shakespeariana in the Library is sufficiently extensive in itself to justify a special list at some future time. Certain plays attributed to Shakespeare, but not generally accepted by scholars as being written by him, are, for obvious reasons, included. Since contemporary interest is chiefly in the "acted" and not in the so-called "poetic" drama, only the more notable authors of the latter type of play have been entered, e.g., Arnold, Browning, Shelley, Swinburne, etc. In general, the list represents the individual works which recent experience has shown to be of most use to the largest number of persons engaged in studying the subject of the English Drama and Stage. Many works are still needed to complete and strengthen the drama collections in the Library, but the known gaps and lacunae are being filled as rapidly as circumstances permit.

The abbreviations used are those customary in the description and entry of book titles. The combination of letter and figures which follows each title is the call-number, which shows the location of the book on the shelves of the Library.