

# **HOW TO IDENTIFY OLD CHINESE PORCELAIN**

Published @ 2017 Trieste Publishing Pty Ltd

ISBN 9780649608430

How to Identify Old Chinese Porcelain by Mrs. Willoughby Hodgson

Except for use in any review, the reproduction or utilisation of this work in whole or in part in any form by any electronic, mechanical or other means, now known or hereafter invented, including xerography, photocopying and recording, or in any information storage or retrieval system, is forbidden without the permission of the publisher, Trieste Publishing Pty Ltd, PO Box 1576 Collingwood, Victoria 3066 Australia.

All rights reserved.

Edited by Trieste Publishing Pty Ltd.  
Cover @ 2017

This book is sold subject to the condition that it shall not, by way of trade or otherwise, be lent, re-sold, hired out, or otherwise circulated without the publisher's prior consent in any form or binding or cover other than that in which it is published and without a similar condition including this condition being imposed on the subsequent purchaser.

[www.triestepublishing.com](http://www.triestepublishing.com)

**MRS. WILLOUGHBY HODGSON**

**HOW TO IDENTIFY  
OLD CHINESE  
PORCELAIN**



**HOW TO IDENTIFY  
OLD CHINESE PORCELAIN**

PLATE I

WHITE PORCELAIN "BLANC-DE-CHINE"

PAIR OF BOWLS of pierced fret-work divided by five circular panels or medallions of raised figures in relief, supposed to represent the Pa-Sien or eight Immortals and the God of Longevity.

Height,  $1\frac{3}{4}$  in. Diameter,  $3\frac{3}{4}$  in.

SEAL in the form of a cube surmounted by the figure of a lion.

Height,  $1\frac{1}{4}$  in.

INCENSE BURNER, eight sided and ornamented by moulding in relief with eight feet and four handles. The sides have three bands enclosing scrolls in ancient bronze designs. At each angle of the cover is a knob; it is ornamented with iris and prunus, and by pierced spaces. The stand has eight feet and a knob at each angle; in the centre is a flower surrounded by detached impressed scrolls, round the outside are similar panels to those on the bowl.

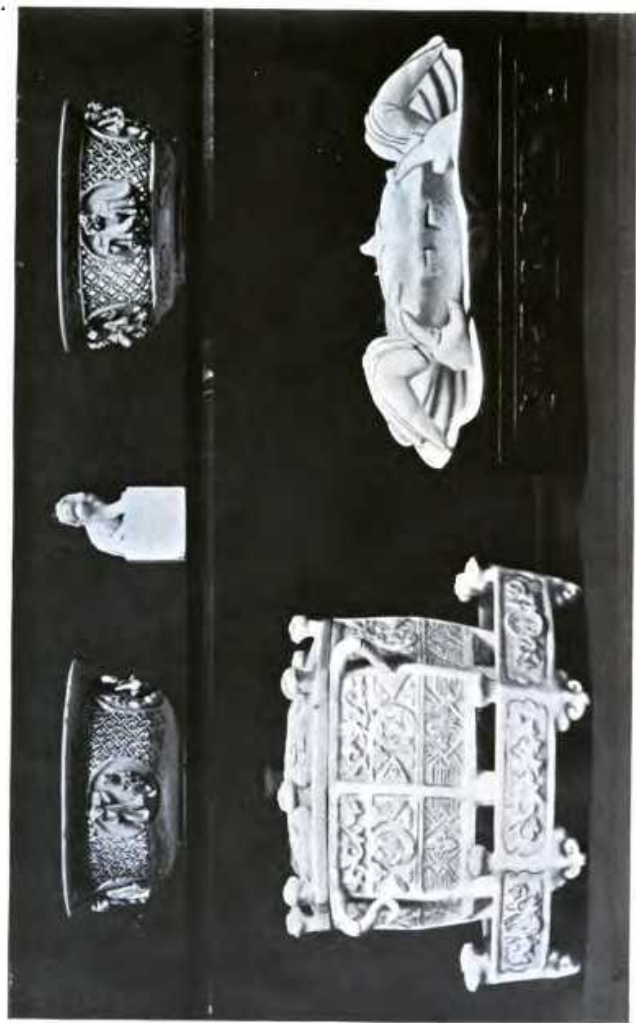
Height,  $4\frac{3}{4}$  in. Diameter of stand,  $6\frac{3}{4}$  in.

THE FIGURE OF A CRAB on a lotus leaf, the stem of which terminates in a flower.

Length,  $6\frac{1}{2}$  in.

*From Sir W. Frazer's Collection at the British Museum.*

PLATE I



HOW TO IDENTIFY  
OLD CHINESE  
PORCELAIN

BY

MRS. WILLOUGHBY HODGSON

AUTHOR OF "HOW TO IDENTIFY OLD CHINA"

WITH FORTY ILLUSTRATIONS



CHICAGO  
A. C. McCLURG & CO.  
LONDON: METHUEN & CO.  
1907



Are 1783.37

RFA 579.71.39



TRANSFERRED TO  
FINE ARTS LIBRARY

Oct. 17, 1963

H-51

HE9

TO  
MRS. HUGH VERRALL  
IN MEMORY OF MANY HAPPY HOURS SPENT  
IN THE STUDY AND QUEST  
OF OLD CHINA

