

**AN INDEX OF
SYMPTOMS AS A
CLEW TO DIAGNOSIS**

Published @ 2017 Trieste Publishing Pty Ltd

ISBN 9780649055418

An Index of Symptoms as a Clew to Diagnosis by Ralph Winnington Leftwich

Except for use in any review, the reproduction or utilisation of this work in whole or in part in any form by any electronic, mechanical or other means, now known or hereafter invented, including xerography, photocopying and recording, or in any information storage or retrieval system, is forbidden without the permission of the publisher, Trieste Publishing Pty Ltd, PO Box 1576 Collingwood, Victoria 3066 Australia.

All rights reserved.

Edited by Trieste Publishing Pty Ltd.
Cover @ 2017

This book is sold subject to the condition that it shall not, by way of trade or otherwise, be lent, re-sold, hired out, or otherwise circulated without the publisher's prior consent in any form or binding or cover other than that in which it is published and without a similar condition including this condition being imposed on the subsequent purchaser.

www.triestepublishing.com

RALPH WINNINGTON LEFTWICH

**AN INDEX OF
SYMPTOMS AS A
CLEW TO DIAGNOSIS**

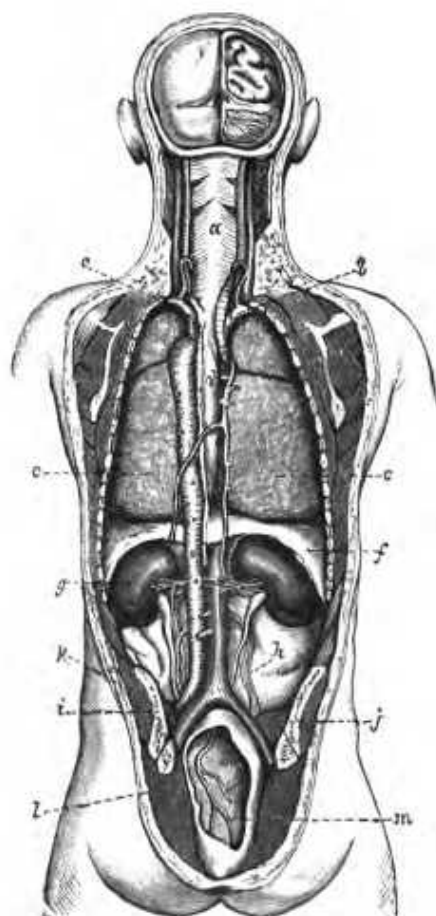
AN

INDEX OF SYMPTOMS

REVIEW OF FIRST EDITION.

'The author of this little book is to be congratulated upon the happy thought which prompted its compilation. . . . Dr. Leftwich has added a chapter on Methods of Diagnosis, for the use of clinical clerks, which furnishes many valuable hints. So far as we have tested this book it appears to be remarkably free from errors, and to be likely to be very serviceable in its suggestiveness. . . . Altogether, the author has succeeded in producing a little book of undoubted novelty and utility.'

LANCET.



VIEW OF THE VISCERA &C. FROM BEHIND (Treves after Rüdinger

a, pharynx; *b*, innominate artery; *c*, subclavian artery; *d*, cesophagus, with the aorta and thoracic duct on one side and theazygos vein on the other; *e*, lungs; *f*, diaphragm covering liver; *g*, kidney; *h*, on peritoneum, points to spermatic vessels crossed by ureter; *i*, os innominatum above sacroiliac synchondrosis; *j*, psoas; *k*, gluteus medius; *l*, gluteus maximus; *m*, rectum and sup. hemorrhoidal artery

AN
INDEX OF SYMPTOMS

AS A CLEW TO DIAGNOSIS

BY
RALPH WINNINGTON LEFTWICH, M.D.

LATE ASSISTANT-PHYSICIAN TO THE EAST LONDON
CHILDREN'S HOSPITAL

Nihil humani a me alienum puto

SECOND EDITION

NEW YORK
WILLIAM WOOD & COMPANY
MDCCCCI



INDEX OF SYMPTOMS

PART I

INTERROGATION, INCLUDING SUBJECTIVE SYMPTOMS

CONTRACTIONS: s, sometimes; v, usually; x, exceptionally; i, first stage; ii, second stage; iii, third stage; *, the most probable or characteristic disease.

SYMPTOMS ELICITED BY INTERROGATION

AGE

1. Congenital Affections

Achondroplasia
Atelectasis
Dislocations of Hip, etc.
Hæmophilia
Hydrocephalus
Infantile Hemiplegia ($\frac{1}{3}$)
Ichthyosis
Idiocy
Icterus neonatorum
Malformations
Nævi
Pemphigus
Progressive Muscular
Atrophy

Pseudo - hypertrophic
Paralysis (x)
Pylorus, Hypertrophy of
Sclerema
Syphilis
Tetanus neonatorum
Thomsen's Disease

2. Infancy

Amyloid
Capillary Bronchitis
Convulsions
Cretinism
Diarrhœa
Diphtheria
Eczema
Glandular Fever

INFANCY—continued

Hydrocephalus
 Spurious Hydrocephalus
 Impetigo contagiosa
 Infantile Hemiplegia
 Intertrigo
 Intussusception
 Laryngismus stridulosus
 Spasmodic Laryngitis
 Measles
 Infantile Paralysis
 Lobular Pneumonia
 Post-pharyngeal Abscess
 Rickets
 Rötheln
 Scarlatina
 Infantile Scurvy
 Seborrhoea
 Spasmus nutans
 Strophulus
 Hereditary Syphilis
 appears at 2 to 6 weeks
 Syphilitic Pemphigus
 Syphilitic Disease of Lungs
 Tetany
 Varicella

3. Childhood
 Adenoids
 Amyloid
 Capillary Bronchitis
 Soft Cataract
 Chorea

Convulsions
 Coxa vara
 Diphtheria
 Encephaloid
 Endocarditis
 Enteric Fever
 Epilepsy
 Floating Kidney (x)
 Friedreich's Disease
 Glandular Fever
 'Growth Fever'
 Hooping Cough
 Hydrocephalus
 Impetigo contagiosa
 Intussusception
 Laryngismus stridulosus
 Measles
 Meningitis
 Mumps
 Mucous Disease
 Noma
 Œdema laryngis
 Polypus
 Post-pharyngeal Abscess (under 4)
 Pseudo-hypertrophic Paralysis
 Paralysis, Infantile (u. under 5)
 Rhinitis, Atrophic
 Rheumatic Nodules
 Rickets
 Ringworm

CHILDHOOD—*continued*

Roseola
 Rötheln
 Roundworms
 Scarlatina
 Tetany
 Thomsen's Disease (4
 to 6)
 Tubercle of Bones, etc.
 Threadworms
 Varicella

4. Adolescence

Acne
 Addison's Disease
 Anæmia
 Apoplexy (Spinal)
 Appendicitis
 Catalepsy
 Chlorosis
 Coxa vara
 Chronic Atrophic Rhi-
 nitis
 Dementia, Acute Prim-
 ary
 Diabetes Insipidus
 Endocarditis
 Enteric Fever
 Epilepsy
 Exophthalmic Goitre
 Exostosis
 Friedreich's Disease
 Glandular Swellings
 Götire
 Hysteria

Meningitis of all kinds
 Mollities Ossium
 Myocarditis
 Myxœdema
 Œdema Laryngis
 Phthisis
 Progressive Muscular
 Atrophy
 Rheumatic Fever
 Rhaehitis adolescen-
 tium
 Spasmodic Spinal Para-
 lysis
 Sacro-iliac Disease
 Softening of Brain from
 Emboli
 Syringomyelia
 Acute Tuberculosis
 Trance
 Ulcer of Stomach

5. Adults

Actinomycosis (20 to
 30)
 Disseminated Sclerosis
 Endocarditis
 Gastralgia
 Hæmorrhage into Cord
 Phthisis
 Primary Spastic Para-
 plegia (20 to 40)
 Acute Ascending Para-
 lysis
 Peliosis rheumatica
 Progressive Muscular
 Atrophy