

**IMPRESSIONS IN
AND ABOUT
PORTLAND, MAINE**

Published @ 2017 Trieste Publishing Pty Ltd

ISBN 9780649197415

Impressions in and about Portland, Maine by Carrie Thompson Lowell

Except for use in any review, the reproduction or utilisation of this work in whole or in part in any form by any electronic, mechanical or other means, now known or hereafter invented, including xerography, photocopying and recording, or in any information storage or retrieval system, is forbidden without the permission of the publisher, Trieste Publishing Pty Ltd, PO Box 1576 Collingwood, Victoria 3066 Australia.

All rights reserved.

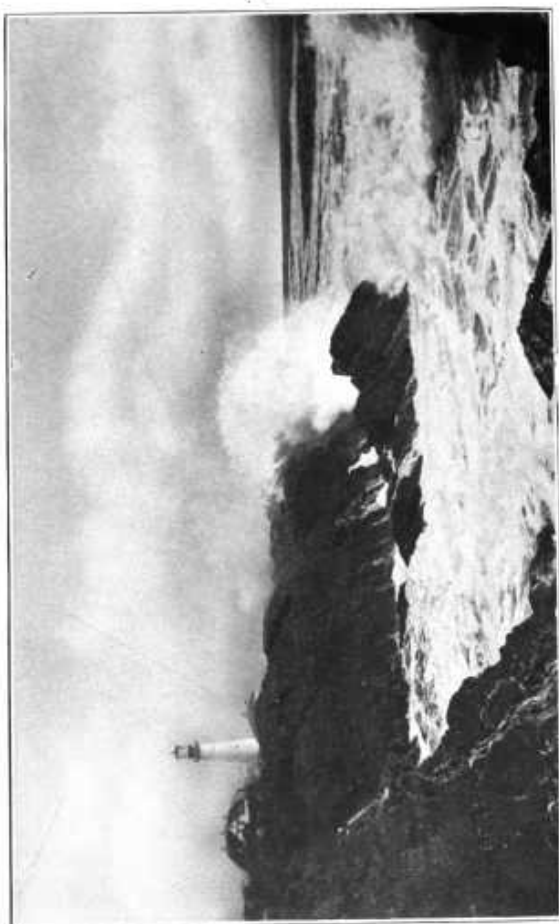
Edited by Trieste Publishing Pty Ltd.
Cover @ 2017

This book is sold subject to the condition that it shall not, by way of trade or otherwise, be lent, re-sold, hired out, or otherwise circulated without the publisher's prior consent in any form or binding or cover other than that in which it is published and without a similar condition including this condition being imposed on the subsequent purchaser.

www.triestepublishing.com

CARRIE THOMPSON LOWELL

**IMPRESSIONS IN
AND ABOUT
PORTLAND, MAINE**



IMPRESSIONS
IN AND ABOUT
PORTLAND, MAINE

SELECTED BY
CARRIE THOMPSON LOWELL



PUBLISHED BY
ABNER W. LOWELL
608 CONGRESS STREET, PORTLAND, MAINE

LIST OF POEMS

THE GROUND OF KINSHIP,	<i>Grace Agnes Thompson</i>
MOTHERLAND,	<i>Robert Rexdale</i>
CASCO BAY,	<i>John G. Whittier</i>
CITY OF MY LOVE,	<i>Caroline Dana Howe</i>
PORTLAND,	<i>Abba Goold Woolson</i>
THE FIRST PARISH VANE,	<i>James Phinney Baxter</i>
CITY HALL,	<i>Carrie Thompson Lowell</i>
THE LONGFELLOW HOUSE,	<i>Adalena E. Dyer</i>
THE LONGFELLOW STATUE,	<i>George E. B. Jackson</i>
THE EASTERN CEMETERY,	<i>Abba Goold Woolson</i>
MAINE GENERAL HOSPITAL,	<i>Moses Owen</i>
DEERING PARK,	<i>Abba Goold Woolson</i>
THE DEERING MANSION,	<i>Carrie Thompson Lowell</i>
RIVERTON PARK,	<i>Edward Clarence Farnsworth</i>
WHITE HEAD,	<i>Nathaniel Deering</i>
ON CAPE ELIZABETH,	<i>Margaret E. Jordan</i>
THE SPELL OF THE SHORE,	<i>Arthur D. Ropes</i>
SONGO RIVER,	<i>Henry W. Longfellow</i>
SEBAGO LAKE,	<i>John G. Whittier</i>

FOREWORD

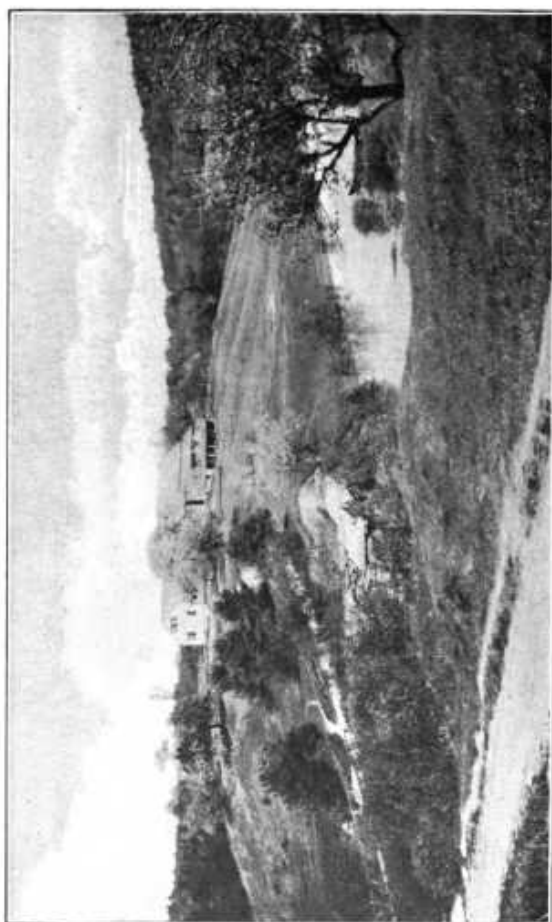


THE poems in this little book have been selected with the earnest desire that they may help to deepen the favorable impression which our fair City has made on the stranger within its gates and on the sons and daughters of Portland whose homes may be afar but whose hearts are still with us.

Permission has been obtained from authors and publishers for copyrighted poems recorded here. Special thanks are due the Youth's Companion and Miss Adalena E. Dyer for the verses on "The Longfellow House," to the New England Magazine and Miss Grace Agnes Thompson for "The Ground of Kinship," also to the Revell Publishing Company and to Robert Rexdale for "Motherland."

CARRIE THOMPSON LOWELL.

Portland, Maine, March, 1910.



THE GROUND OF KINSHIP

(With apologies to the Autocrat of the Breakfast Table, who claimed for Cambridge, Mass., the palm as "Nicest place that ever was seen.")

Know old Maine? You bet I do.
Born there? Don't say so! I was, too,—
Born in a farm-house with one-pitched roof,
Weather-worn, if you must have proof—

Pine-Tree Gulch. Ah! Let me beg
You'll search from Key West to Winnipeg,
No saner childhood'll you find aloof
Than under an old Maine farmhouse roof.

Nicest place that ever was seen,—
Rugged old hills and pastures green,
Rivers a-plenty with woods between.
Sweetest spot beneath the skies

Soon as apple bloom perfumes rise ;
Summer in Maine is time that flies,
Charming your mouth and ears and eyes,
With treasures of shore where ocean lies,

And bird-trilled groves and berry pies
And myriads else that Yankees prize.

Grace Agnes Thompson.