

**STATE OF RHODE ISLAND AND
PROVIDENCE PLANTATIONS. SIXTEENTH
ANNUAL REPORT OF
FACTORY INSPECTION, MADE TO THE
GENERAL ASSEMBLY AT ITS JANUARY
SESSION, 1910**

Published @ 2017 Trieste Publishing Pty Ltd

ISBN 9780649057405

State of Rhode Island and Providence Plantations. Sixteenth Annual Report of Factory Inspection, Made to the General Assembly at Its January Session, 1910 by J. Ellery Hudson

Except for use in any review, the reproduction or utilisation of this work in whole or in part in any form by any electronic, mechanical or other means, now known or hereafter invented, including xerography, photocopying and recording, or in any information storage or retrieval system, is forbidden without the permission of the publisher, Trieste Publishing Pty Ltd, PO Box 1576 Collingwood, Victoria 3066 Australia.

All rights reserved.

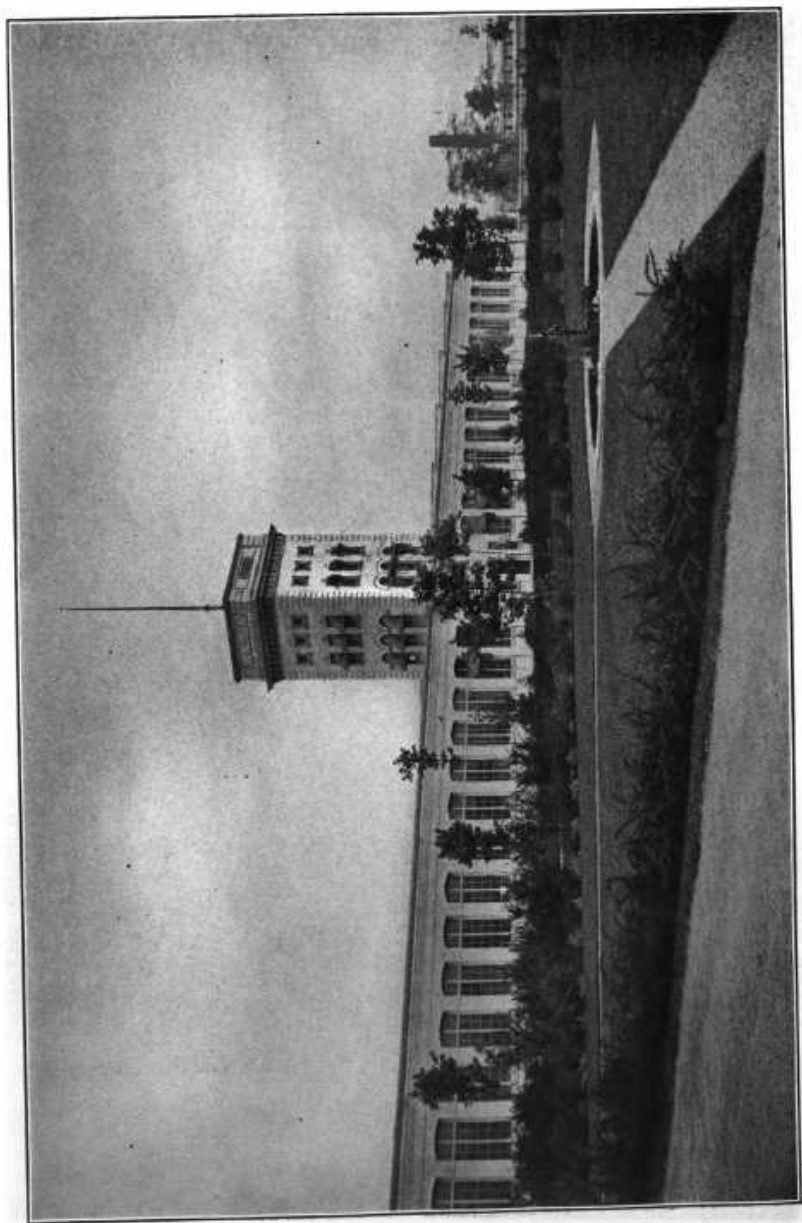
Edited by Trieste Publishing Pty Ltd.
Cover @ 2017

This book is sold subject to the condition that it shall not, by way of trade or otherwise, be lent, re-sold, hired out, or otherwise circulated without the publisher's prior consent in any form or binding or cover other than that in which it is published and without a similar condition including this condition being imposed on the subsequent purchaser.

www.triestepublishing.com

J. ELLERY HUDSON

**STATE OF RHODE ISLAND AND
PROVIDENCE PLANTATIONS. SIXTEENTH
ANNUAL REPORT OF
FACTORY INSPECTION, MADE TO THE
GENERAL ASSEMBLY AT
ITS JANUARY SESSION, 1910**



GLENLYON DYE WORKS, PHILIPPSDALE.

State of Rhode Island and Providence Plantations

SIXTEENTH ANNUAL REPORT

OF

FACTORY INSPECTION,

MADE TO THE

GENERAL ASSEMBLY

AT ITS

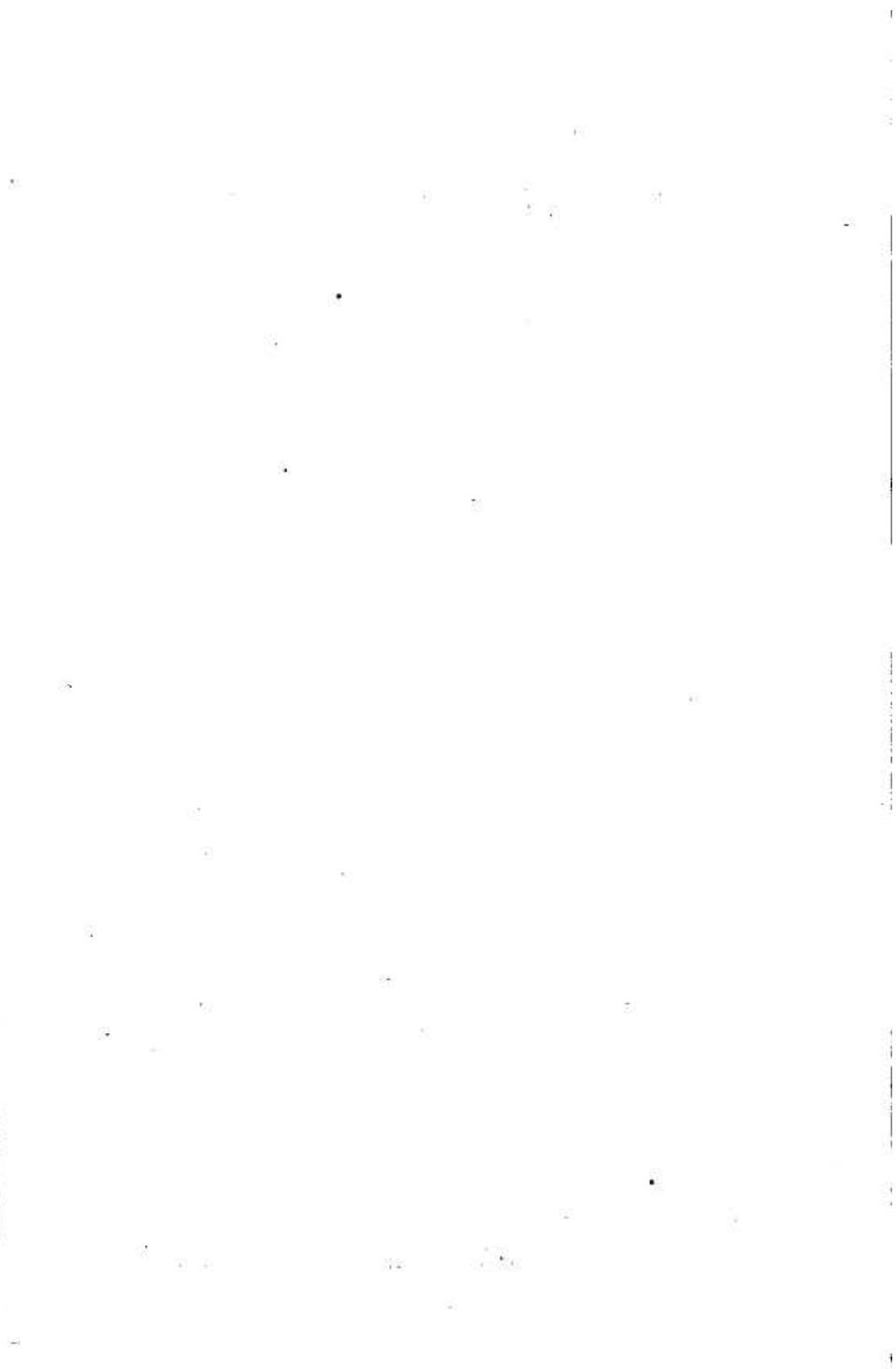
JANUARY SESSION, 1910.

J. ELLERY HUDSON, - - Chief Factory Inspector.

PROVIDENCE:

E. L. FREEMAN COMPANY, STATE PRINTERS.

1910.



State of Rhode Island and Providence Plantations.

SIXTEENTH ANNUAL REPORT

OF

INSPECTIONS OF FACTORIES, MERCANTILE ESTABLISHMENTS,
AND WORKSHOPS,

FROM

JANUARY 1ST, 1909, TO JANUARY 1ST, 1910.

(RECAP)
HD3656.
A-3
R4

532782

RHODE ISLAND FACTORY INSPECTION DEPARTMENT.

J. ELLERY HUDSON, - - - - Chief Inspector.
Mrs. HELEN M. JENKS, - - Assistant Inspector.
JOSEPH ROY, - - - - Assistant Inspector.

LETTER OF TRANSMITTAL.

OFFICE OF FACTORY INSPECTORS.

PROVIDENCE, R. I., January, 1910.

TO HIS EXCELLENCY ARAM J. POTHIER,
Governor, State of Rhode Island:

In accordance with the provisions of Chapter 1215 of the Public Laws, we have the honor to submit to you, and through you to the General Assembly, this the fourteenth annual report of the Factory Inspectors of this State, covering the inspection of factories, workshops, and mercantile establishments during the year ending December 31, 1909.

Respectfully submitted,

J. ELLERY HUDSON,
Chief Factory Inspector.

1

2

3

4

5

6

7

8

9

10

11

12

13

14

15

16

17

18

19

20

21

22

23

24

25

26

27

28

29

30