

**GREENLEE COUNTY;  
THE WONDERLAND  
OF ARIZONA**

Published @ 2017 Trieste Publishing Pty Ltd

ISBN 9780649749355

Greenlee County; the wonderland of Arizona by Various

Except for use in any review, the reproduction or utilisation of this work in whole or in part in any form by any electronic, mechanical or other means, now known or hereafter invented, including xerography, photocopying and recording, or in any information storage or retrieval system, is forbidden without the permission of the publisher, Trieste Publishing Pty Ltd, PO Box 1576 Collingwood, Victoria 3066 Australia.

All rights reserved.

Edited by Trieste Publishing Pty Ltd.  
Cover @ 2017

This book is sold subject to the condition that it shall not, by way of trade or otherwise, be lent, re-sold, hired out, or otherwise circulated without the publisher's prior consent in any form or binding or cover other than that in which it is published and without a similar condition including this condition being imposed on the subsequent purchaser.

[www.triestepublishing.com](http://www.triestepublishing.com)

**VARIOUS**

**GREENLEE COUNTY;  
THE WONDERLAND  
OF ARIZONA**



COMPILED AND PUBLISHED BY  
RUSH & RUSH, PHOENIX, ARIZONA

COPYRIGHT BY  
TELLMAN STOUT RUSH

1922



ARIZONA STATE CAPITOL AT PHOENIX

## ARIZONA

**A**RIZONA! It is a land of romance and fascination. A land of bewitching scenery and unexcelled beauty. Its rocks and mountains bear mute testimony to its great age, while its rich fields of grain and alfalfa attest its newness from the standpoint of modern activities.

From out the past there trails past the vision, ghosts of a pre-historic race, whose civilization was of no mean degree, judging from what the archaeologist uncovers in their long deserted ruins which dot many sections of the state. Then in a later age came the Spanish conquistadors and the padres who built Missions and endeavored to convert the savage to their religion. Last, but not least, even in romance and charm, came the pioneer, carrying his rifle by his side as he tilled the soil or herded his cattle, to protect himself from the blood-thirsty warriors of Victoria, Cochise and the cruellest of them all, Geronimo.

No less interesting, romantic or fascinating are the achievements of today, as one views the new cities and thriving hamlets that have sprung into existence within



ROOSEVELT DAM, ARIZONA'S GREATEST ENGINEERING FEAT



FOUR BAR FLATS, SPRINGERVILLE ROAD

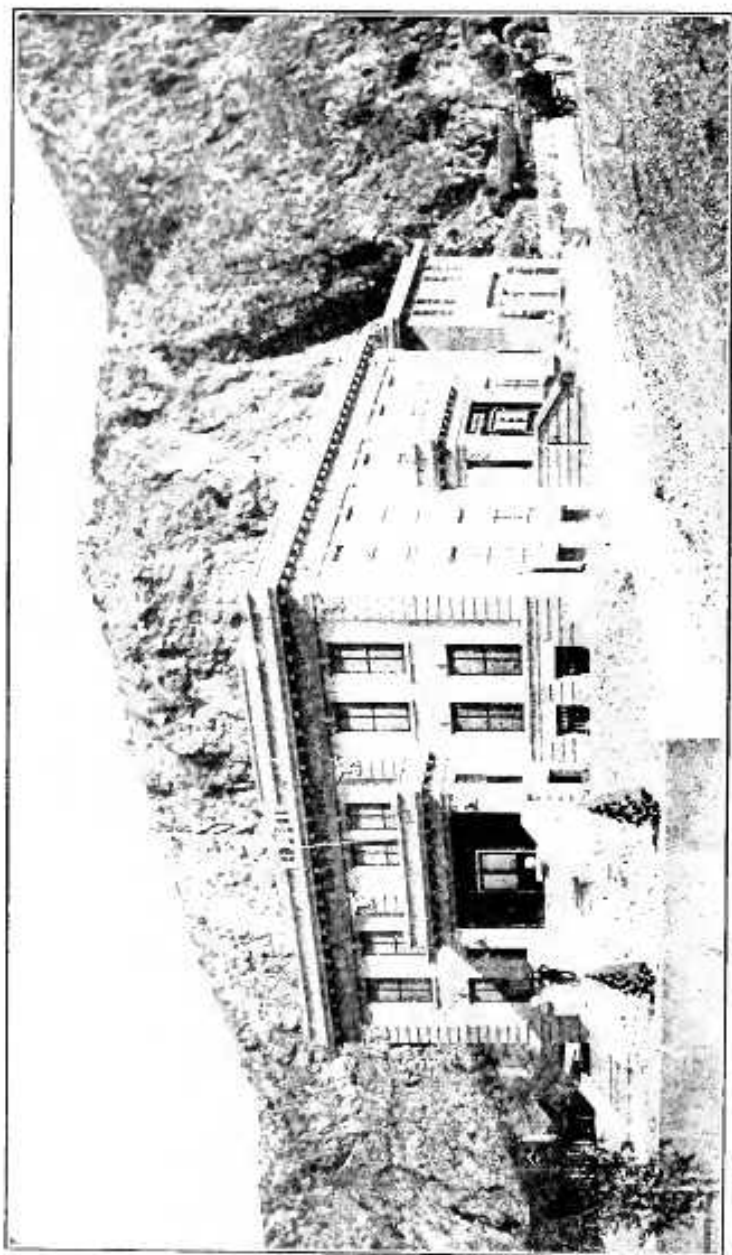
the bounds of this youngest of the states of the Union. There are fertile fields of golden grain and green alfalfa, which have taken the place of the greasewood and mesquite; orange groves and olive orchards; the earth yielding up her rich treasures of gold, silver and copper, because man has conquered by the cunning of his brain, and the energy latent in his hands. All this goes to make Arizona, indeed, the "Wonderland of America."

No one visits this Wonderland who does not long to return, if only for a few months' sojourn. No one is ever disappointed in Arizona. Here is found the most elastic climate imaginable; the most variable scenery that can be had anywhere; the most diversified occupations obtainable. Here are experienced altitudes ranging from nearly sea level to almost two miles above. Here are temperatures extending from the tropical to perpetual snow. In Arizona is found the very best of the "Last West." Here in abundance are found the big game of the Rockies, the yelping wolf of the mountains, and the sneaking coyote in the arroyos; the mountain lion and bear in their cliff dwelling homes.

Arizona is the healthiest state in the Union. The atmosphere is so clear and pure that the azure blue of



CLIFTON-METCALF ROAD



GREELEY COUNTY COURT HOUSE





SPECIMENS TAKEN FROM PREHISTORIC RUINS

the sky cannot be equalled anywhere. At night the stars are more brilliant, and seem so close that one wants to reach up and touch them. Such is the effect of the Arizona atmosphere. And the sunsets—no artist's brush can ever do them justice, and no language has ever been conceived that can adequately describe them. Their gorgeous colorings are simply beyond the range of human language to portray. All visitors to Arizona are affected alike by what they see. Some one has said:

"Sun land, dun land, rope and spur and gun land,  
What is your enchantment, that you hold me in my  
dreams?  
True land, view land, shade of every hue land,  
Mountain peaks and cañons, cradled, dimpling,  
gleam,  
Glad land, sad land, poor old pagan bad land,  
Some day to the castle we shall find the key,  
Wild land, mild land, slumbering, much beguiled land,  
Then you shall awake, glad and free."



THE GRAND CANYON OF ARIZONA



AMONG THE BIG PINES ON THE SPRINGERVILLE ROAD

### GREENLEE COUNTY

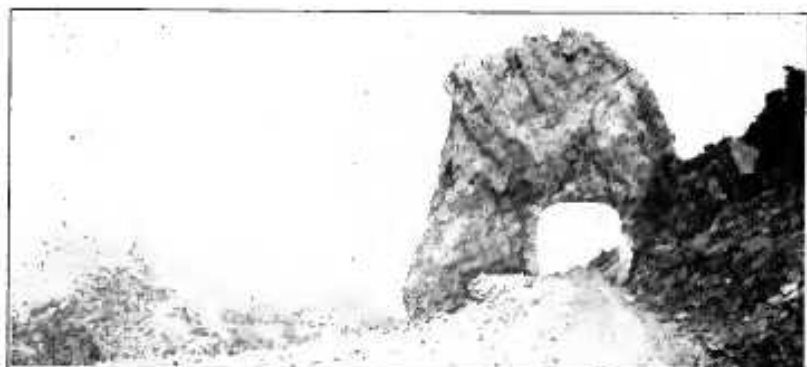
**I**N the making of history, long before Arizona was a state and Greenlee a county, scenes were enacted within the borders of what is now Greenlee county, that had they been recorded, would loom large in American annals; scenes where the soldier boy and his rifle matched the half naked savage with his bow and arrow and scalping knife.

Within the borders of this county Geronimo and his savage hordes carried on much of their death-dealing cruelty. There were many victims of their savagery in the early days, and there are many yet living in Greenlee county, who passed through those trying times, when men lived in perpetual fear of being killed and scalped by the red skinned savages.

At one time Greenlee county was a part of Graham but in 1909 pressure enough was brought to bear upon the 25th Legislative Assembly of the Territory of Arizona, to pass an act establishing the boundary of Greenlee county.



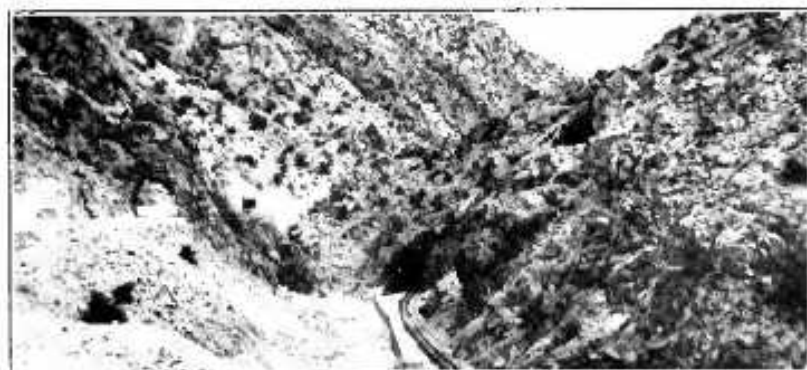
VIEW FROM THE MULE CREEK ROAD



A SCENE ON THE MOLE CREEK ROAD

An election was held in November, 1910, for the purpose of electing officers for the new county of Greenlee, and the first officers were: Sheriff, I. B. English; Treasurer, John M. Webster; Recorder, John F. Burke; District Attorney, E. V. Hurton; Assessor, James H. Kerby; School Superintendent, J. W. Aker; Supervisors, B. F. Billingsley, George Webster, J. H. T. Cusper. There were several applicants for the county seat, Clifton and Duceau being the leading rivals. Clifton won the prize, and the new Court House was started on January 1st, 1911, and was completed and occupied, September 1st, 1912.

When Greenlee became a county there was not a single good wagon road within its entire boundary; only a few trails, and only one bridge in the whole county. Today, Greenlee county has nearly 200 miles of as fine auto roads as can be found in the state, and some of the most costly and substantial bridges that can be seen anywhere.



TUNNELS ON METCALF ROAD