

**A HISTORY OF THE
WILHELMS AND THE
WILHELM CHARGE**

Published @ 2017 Trieste Publishing Pty Ltd

ISBN 9780649089338

A history of the Wilhelms and the Wilhelm charge by The Historical Committee

Except for use in any review, the reproduction or utilisation of this work in whole or in part in any form by any electronic, mechanical or other means, now known or hereafter invented, including xerography, photocopying and recording, or in any information storage or retrieval system, is forbidden without the permission of the publisher, Trieste Publishing Pty Ltd, PO Box 1576 Collingwood, Victoria 3066 Australia.

All rights reserved.

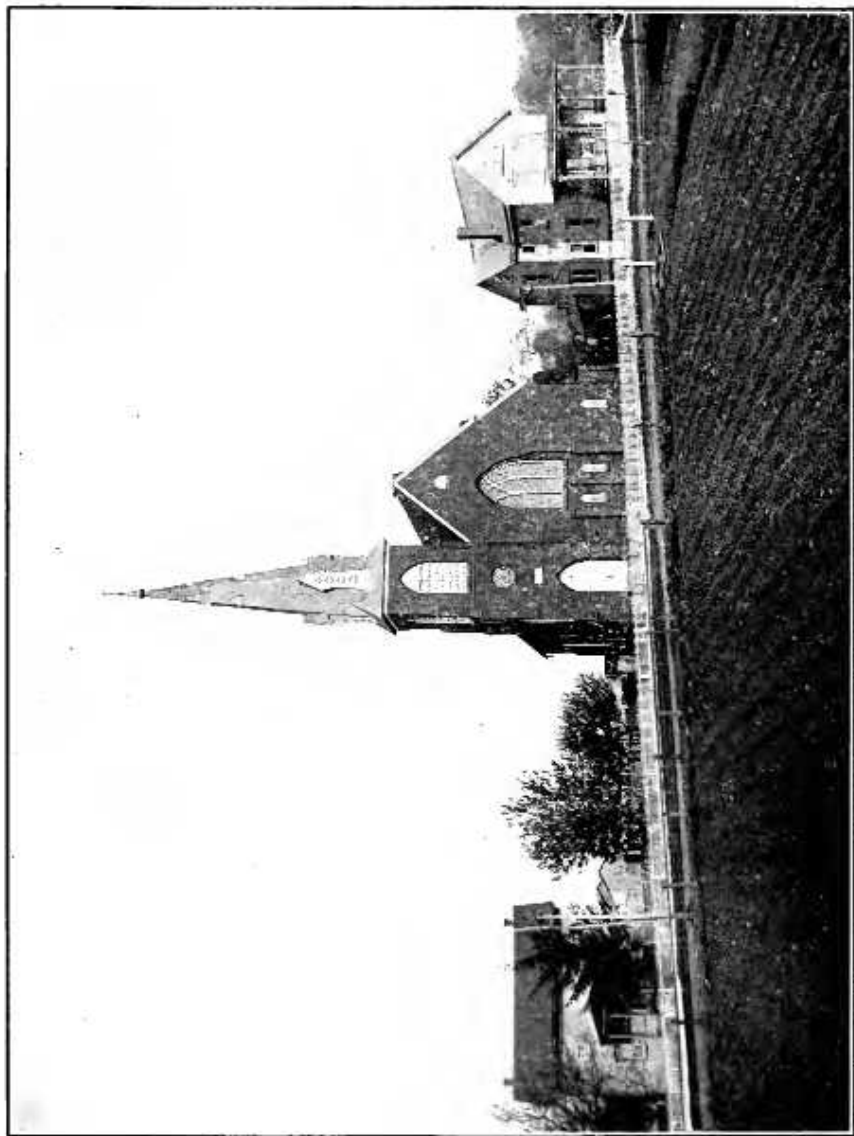
Edited by Trieste Publishing Pty Ltd.
Cover @ 2017

This book is sold subject to the condition that it shall not, by way of trade or otherwise, be lent, re-sold, hired out, or otherwise circulated without the publisher's prior consent in any form or binding or cover other than that in which it is published and without a similar condition including this condition being imposed on the subsequent purchaser.

www.triestepublishing.com

THE HISTORICAL COMMITTEE

**A HISTORY OF THE
WILHELMS AND THE
WILHELM CHARGE**



Sexton House

St. Paul's Church

Parsonage

A HISTORY OF

THE WILHELMS

AND

THE WILHELM CHARGE

BY THE HISTORICAL COMMITTEE

ILLUSTRATED

THE WILHELM PRESS
MEYERSDALE, PA.
1919

2279063

To the memory of the
WILHELMS
Benefactors of a Church
and of a College
This Volumn is Dedicated

116

FOREWORD

IN COMPILING this history, the committee is rendering the church and the community a service. Already has this work been too long delayed. In another generation, much of the material that is now available will be forgotten or lost. The committee has made it a point to get accurate and reliable information, which has involved much time and expense. Some inaccuracies may be found in the Wilhelm traditions, for there was no disposition on the part of the committee to take from them any of the luster that has accumulated through the years, which might have resulted from rigid inquiry.

What is said on page 77, relative to the first appearance of the *Wilhelm Evangel*, seems to contradict what is said on the same subject on page 112. The explanation is this. The authorized publication dates from 1900, as is shown on the minutes of the consistory. The first number of 1900 was issued as Number 1 of Volumn 2. However, Mr. Hassler, as is stated on page 112, published a parish paper prior to this time, and presumably upon his own initiative.

The Sketches of Members are of purely local interest. Where towns or townships are mentioned, in this chapter, it is understood that they belong to Somerset county, Pennsylvania. The committee would have been pleased to extend the chapter on Sketches of Members to include even more, and to write at greater length concerning the lives and work of those who have had no small part in making

St. Paul's what she is. Even as it is, the committee has exceeded the limits of the size of the book authorized by the consistory.

The committee is indebted to the Reformed Church Messenger for much of the material used in the sketch of Dr. Koplin; and to the Obituary Record of Franklin and Marshall College for the greater part of the sketches on Rev. W. A. Gring and Rev. C. U. Heilman. The committee also acknowledges its indebtedness, for various services rendered, to Rev. D. S. Stephan, Rev. E. F. Hoffmeier, The Meyersdale Republican, The Publication and Sunday School Board of the Reformed Church, and to the former living pastors of St. Paul's.

Rev. L. Nevin Wilson
D. Compton
Ed. R. Hay

Committee

Meyersdale, Pennsylvania
October 1, 1919

THE WILHELMS AND THE WILHELM CHARGE

LOCALITY AND LANDSCAPE

IF YOU look at a map of Pennsylvania, you will find Somerset county in the south tier of counties, the third from the west. The part of the country with which this history is concerned is comprised between the Allegheny Mountain on the east and the Negro Mountain on the west. In the valley thus formed, which is about six miles wide, flows the Casselman River, a tributary of the Yough-
iogheny. This region is of great economical importance. Originally it was thickly wooded and has furnished and is still furnishing the lumbermen with fine chestnut and spruce timber. It remains one of the great maple sugar sections of the state. Besides, within a limited area, bounded by the Casselman on the north and east and by the Negro Mountain on the west, this section is particularly rich in coal. The Lower Productive Coal Measures pass below the bed of the river, and have not been touched by the operator. The great Pittsburgh Coal seam, which forms the base of the Upper Productive Measures, appears near the hill-tops, and while this coal has been operated for some 40 years, sufficient coal remains to give employment to several hundred miners.

If you pass from the Casselman westward toward the Negro Mountain you find that the land rises rapidly, from an altitude of 2010 feet at the