

**THE PRACTICE OF ORE DRESSING IN EUROPE.
A DESCRIPTION OF FOREIGN METHODS FOR
THE MECHANICAL CONCENTRATION
OF ORES, REVISED AND CORRECTED FROM A
SERIES OF ARTICLES IN THE SCHOOL OF
MINES QUARTERLY OF COLUMBIA COLLEGE**

Published @ 2017 Trieste Publishing Pty Ltd

ISBN 9780649678334

The Practice of Ore Dressing in Europe. A Description of Foreign Methods for the Mechanical Concentration of Ores, Revised and Corrected from a Series of Articles in the School of Mines Quarterly of Columbia College by Wheaton B. Kunhardt

Except for use in any review, the reproduction or utilisation of this work in whole or in part in any form by any electronic, mechanical or other means, now known or hereafter invented, including xerography, photocopying and recording, or in any information storage or retrieval system, is forbidden without the permission of the publisher, Trieste Publishing Pty Ltd, PO Box 1576 Collingwood, Victoria 3066 Australia.

All rights reserved.

Edited by Trieste Publishing Pty Ltd.
Cover @ 2017

This book is sold subject to the condition that it shall not, by way of trade or otherwise, be lent, re-sold, hired out, or otherwise circulated without the publisher's prior consent in any form or binding or cover other than that in which it is published and without a similar condition including this condition being imposed on the subsequent purchaser.

www.triestepublishing.com

WHEATON B. KUNHARDT

**THE PRACTICE OF ORE DRESSING IN EUROPE.
A DESCRIPTION OF FOREIGN METHODS FOR
THE MECHANICAL CONCENTRATION
OF ORES, REVISED AND CORRECTED FROM A
SERIES OF ARTICLES IN THE SCHOOL OF
MINES QUARTERLY OF COLUMBIA COLLEGE**

THE PRACTICE
OF
ORE DRESSING
IN EUROPE.

A DESCRIPTION OF FOREIGN METHODS FOR THE MECHANICAL
CONCENTRATION OF ORES, REVISED AND CORRECTED
FROM A SERIES OF ARTICLES IN THE SCHOOL OF
MINES QUARTERLY OF COLUMBIA COLLEGE.

WHEATON B. KUNHARDT,
MINING ENGINEER.

NEW YORK:
JOHN WILEY & SONS,
No. 15 ASTOR PLACE.
1884.

COPYRIGHT, 1884,
By JOHN WILEY & SONS.

14308

M L V

.K95

659537

PREFACE.

A VISIT to the ore dressing establishments of Europe and a comparison of their several methods of working discloses the great development which the mechanical treatment of ore has undergone during the past few years. Some of the works have remained almost unaltered since the date of their erection, twenty years ago; others have been enlarged or modified in accordance with advanced ideas, and sometimes exhibit the old and the new side by side; and others, again, have but recently been erected and embody many of the improvements derived from experience. To note the advances that have been made in ore dressing may prove of interest to some, and would certainly possess practical value if suggesting the direction in which further improvements will be sought. Most conducive to this object would be a study of the schemes of ore treatment that have been developed in the various mills; but this method, unless thoroughly carried out—a proceeding which would far exceed the limits here proposed—can lead to no useful results: any scheme or synopsis of an ore treatment not supplemented by an accurate description of the ore, and by accounts of the disposition made of the various mill products, and by a complete statement of local conditions, including many small, yet influencing details, will always prove very unsatisfactory. Remarks of a general nature have therefore been preferred, and these (restricted so as not to embrace the subject of coal washing) present a digest of matter that has been gathered in the foreign mills through the kindly courtesy of their owners and managers.

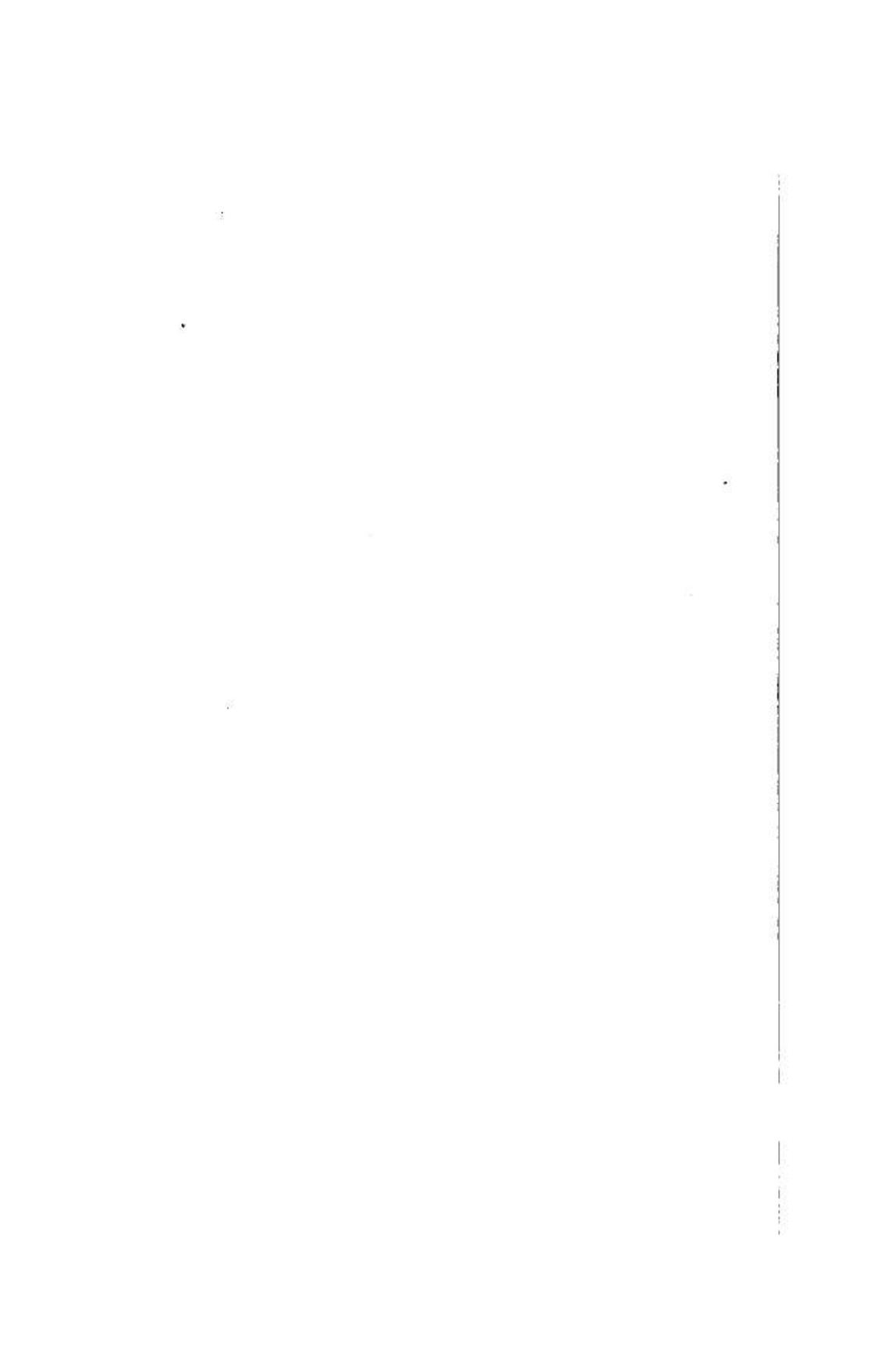


TABLE OF CONTENTS.

GENERAL PRINCIPLES.....	PAGE 1
Objects of Ore Dressing.—Dressing by Hand and by Machines.—Sizing and Sorting. —Slime Washing.—Table of Standard Sizes and Names of Products.	
UNDERGROUND SEPARATION	3
Material Treated.—Objects and Limitations of the Operation.—Practice at <i>Prisbram</i> .	
GENERAL SIZE CLASSIFICATION	3
Material Treated.—Objects of the Operation.—Sizing Grates.—Lump-Ore and Finings.—Advantages in Dressing Each Ore-Class Separately; Practice at <i>Ems</i> . —Proportional Quantities of Lump-Ore and Finings.	
CLEANSING	4
Material Treated and Objects of the Operation.—Various Methods Employed; Practice at <i>Lautenthal</i> .—Special Apparatus for Cleansing Iron and Zinc Ores; Practice at <i>Blei Scharley</i> .	
SPALLING	5
Material Treated.—Description and Objects of the Operation.—Its Importance in Certain Cases; Practice at <i>Ems</i> .—Prospects for Discontinuing the Operation.	
ROCK BREAKING	7
Common Form of Breaker.—Material Treated.—Limit of First Size Reduction. —Advantage of Separating the Crushing from other Dressing Operations. Scheme of Process for Dressing Crushed Ore and Finings.—The Principle of Min- imizing the Production of Mineral Dust, and its Bearing on Methods of Separation.	
SIZING	9
Material Treated.—Classification into Picking Ores, Jigging Ores, Fine Jigging Ores and Slime; Practice in <i>Cornwall</i> ; at <i>Lauremburg</i> ; at <i>Clausthal</i> .—Propor- tional Quantities of Each Size-Class.—Sieve Sizes.	
Riddles vs. Trommels.—Cylindrical vs. Conical Trommels.—Several Sieves in a Single Trommel.—Defects of Common Practice, and Remedies Proposed.—The Heberle Trommel System.—Jacketed Trommels.—Improvements to Facilitate Repairs.—Woven and Punched Sieves.—Experiment with Iron and Copper Sieves.—Self Feeders.—Capacity of Trommels.—Arrangement of Trommels; Practice at <i>Lintorf</i> .—Advantage of the Heberle System in Economizing Height. Production of Mineral Dust in Sizing.—Saving of the Fine Mineral at <i>Prisbram</i> ; Practice at <i>Clausthal</i> .	
HAND-PICKING	16
Material Treated.—Classification into Crushing Ores and Cobbing Ores; Practice at <i>Clausthal</i> .—Best Form of Revolving Picking Tables.—Reduction of Manual Labor.—Control of the Work	

COBBING.....	18
Material Treated.—Description and Objects of the Operation.—Production of Marketable Concentrates; Practice at <i>Hale</i> .—Production of Crushing Ores; Practice at <i>Ems</i> .—Intermediate Cobbing Operations; Practice at <i>Clausthal</i> .—Separate Mills for treating the different cobbled Ore-Products.—Labor-saving Contrivances.	
ROLL CRUSHING	21
Material Treated.—Fineness of Crushing.—Successive Reductions by Several Pairs of Rolls; Practice at <i>Prisibram</i> .	
Construction of Rolls.—Wear of Steel Tires.—Speed and Capacity of Rolls.—Disadvantages of Small Rolls.—Automatic Feed.—Rubber Buffers.—Relative Arrangement of Trommels, Rolls and Jigs.	
JIGGING.....	26
Wet and Dry Jigging.—Material treated.—Size Limitations of Ore; Exceptional Practice at <i>Lintorf</i> .—Advantages of the Side-Piston Jig.—Automatic and Semi-automatic Jigs.—Products of a Multiple-Sieve Jig.—Discharge of Concentrates Collecting on the Jig Sieve.—Use of a Stay-box in Coarse Jigging.—Production of Two Classes of Concentrates on a Single Sieve.—The Heberle Gate, or Siphon Discharge.—Discharge of Concentrates through the Jig Sieve; Remarkable Practice at <i>Lauremburg</i> .—Character of the Mineral Bed.—Discharge of Tailings.—Economizing Water.—Use of a Stay-Box in Fine Jigging.	
Construction and Wear of Jigs.—Proportional areas of Piston and Sieve.—Punched and Woven Sieves.—Wear and Mesh of Sieves.—Relative Levels of Successive Sieves.—Slow Return of Piston Discussed.—The Elbow-Joint Slow Return Movement.—Slow Return Movements for Fine Jigging.—Length of Piston Stroke.—Speed.	
Method of Controlling the Jigging Operation.—Variation of the Piston Stroke; Practice at <i>Grund</i> .—Variation of the Ore Supply, the Water Supply, the Discharge of Concentrates, and the Thickness of the Mineral Bed.—Capacity of Jigs and Consumption of Water.—Quantity of Ore upon the Sieves.—Arrangement of Jigs with reference to Handling of Products.	
ROUGH HYDRAULIC SEPARATION.....	43
Utility of the Operation for Some Ores; Practice at <i>Bleiberg</i> (Germany).—The Siphon Separator, its Mode of Working, Capacity and Water Consumption.	
REVIEW OF COARSE DRESSING AND INTRODUCTION TO SLIME TREATMENT. 44	
Development of Continuity between Different Dressing Operations.—Limitations of Ordinary Methods, and Necessity for New Processes not based on Specific Gravities.	
Conflicting Views on Slime Washing.—General Order of Operations in Treating Slime.	
COMMINATION.....	46
Material Treated.—Stamps.—Fineness of Stamping.—Successive Reductions at <i>Schemnitz</i> .—Self Feeders.—Increase in the Number of Stamps to a Battery at <i>Clausthal</i> .—Order of Drop.—Wear of Shoes and Dies.—Weight and Capacity of Stamps.—Advantages of the Stay-Battery.—Wear of Sieves.—Water Consumption.—Iron Battery Frames.—Slotted Stamp Stems at <i>Prisibram</i> and Comparative Tests with Rotating Stamps.—Pneumatic Stamps in <i>Cornwall</i> ; their Efficiency and Capacity.	

Comminuting Mills; their Advantage over Stamps.—The Dingey Mill, the Heberle Mill, the Brink and Huebner Disintegrator; the relative Merits and Defects of each Machine.—Comparative Experiments at *Prüßram*.—The Schranz Roller Mill.—Comparative Test between the Mill and a Stamp Battery.—Use of Comminuting Mills for very Fine Reduction.

HYDRAULIC CLASSIFICATION Page 58

Material treated and Objects of the Operation.—Production of Sand, Meal and Pulp Classes.—Intermittent and Continuous Classification.—Grading Pits.—Float Mineral.—The Spitzlute.—Small Spitzkasten for grading Sand Slime.—Comparative Merits of the Spitzlute and the Spitzkasten.—Highly developed Practice at *Schemnitz*.—*Rhenish* Practice.—Large Spitzkasten for grading Pulp Slime.—Siphon Discharges.—Classifications at *Ems*, with and without Concentration.—The Geyer Concentrator.

SLIME WASHING 67

Material Treated.—Object of the Operation.—Various Slime Washers Commonly Employed.—*Figs.*—Their Action on Graded Sands Discussed.—Capacity and Efficiency. *Buddles*.—Their Separating Action and Efficiency; Practice in *Cornwall*. *Stationary Plane Tables*.—Their Separating Action.—Loss of Mineral by Sliding over the Table.—Automatic Plane Tables in *Cornwall*. *Continuous Round Tables*.—Their Separating Action. The Outward-flow Table.—Its Mode of Operation.—Cleansing Brushes.—Spiral Water Pipes.—Capacity, Speed and Power Consumed. The Inward-flow Table.—Its Mode of Operation.—The Inward and Outward-flow Tables Compared.—Combined Inward and Outward-flow Tables. The Linkenbach Table. *End-Percussion Tables*.—Their Separating Action.—Effect of the End-Percussion.—Details of Working; Practice at *Freiberg*.—Capacity.—Usual Arrangement.—Importance of a Uniform Slime. *Side-Percussion Tables*.—Separating Action of the Rittinger Table.—Effect of the Side-Percussion.—Details of Working; Practice at *Schemnitz*; Practice at *Bleiberg* (Belgium).—Improvements in Construction.—Capacity, Speed and Power Consumed. *Patented Slime Washers*.—Plane Endless-belt Machines.—The Frue Vanner.—Percussive Endless-belt Machines.—The Embrey Concentrator. *Tossing Keves*.—Their Mode of Operation and Range of Usefulness.—Details of Working; Practice at *Cambrae*.

Comparisons between Different Slime Washers.—Comparative Merits of Fine Jigs and Round Tables.—Jigs unsatisfactory for Slime finer than 1 mm.—The Rittinger Table specially adapted for Coarse Meal Slime; Experiments at *Claustrahl*.—The End-Percussion Table in Blende Dressing Mills.—Its merits compared with the Rittinger Table; Experiments at *Prüßram*.—Range of the Usefulness of the Round Table.—Its Advantages.

CRUSHING AND DRYING OF CONCENTRATES 96

Dry Crushing of Coarse Concentrates.—Drying of Slime Concentrates.—Percentage of Water in the Market Products.

LOSSES IN WET DRESSING 97

Small Losses in Coarse Dressing.—High Percentage of Loss in Slime Washing.—Losses caused by a Defective System of Slime Dressing.—Sparre's Laws on the Movement of Slime Particles.—The Defects of Ordinary Concentrating Machines.