

**THE GLEN HOUSE BOOK,
WHITE MOUNTAINS
SEASON OF 1889**

Published @ 2017 Trieste Publishing Pty Ltd

ISBN 9780649594276

The Glen House Book, White Mountains Season of 1889 by Charles R. Milliken

Except for use in any review, the reproduction or utilisation of this work in whole or in part in any form by any electronic, mechanical or other means, now known or hereafter invented, including xerography, photocopying and recording, or in any information storage or retrieval system, is forbidden without the permission of the publisher, Trieste Publishing Pty Ltd, PO Box 1576 Collingwood, Victoria 3066 Australia.

All rights reserved.

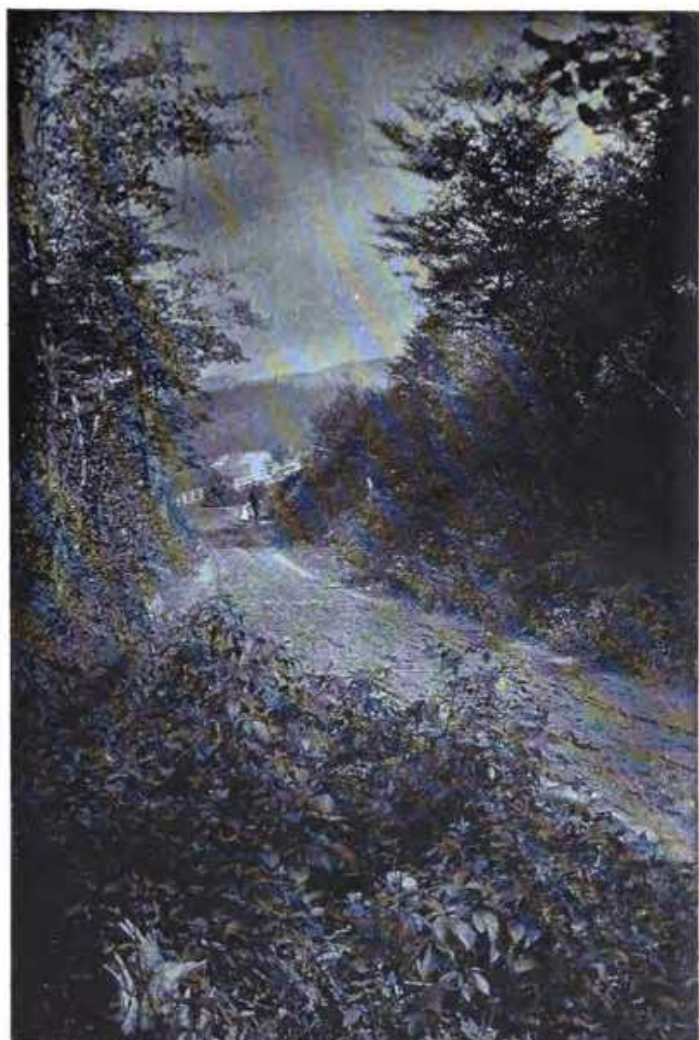
Edited by Trieste Publishing Pty Ltd.
Cover @ 2017

This book is sold subject to the condition that it shall not, by way of trade or otherwise, be lent, re-sold, hired out, or otherwise circulated without the publisher's prior consent in any form or binding or cover other than that in which it is published and without a similar condition including this condition being imposed on the subsequent purchaser.

www.triestepublishing.com

CHARLES R. MILLIKEN

**THE GLEN HOUSE BOOK,
WHITE MOUNTAINS
SEASON OF 1889**



FIRST VIEW OF THE OLD GLEN HOUSE.

THE
GLEN HOUSE BOOK

WHITE MOUNTAINS

SEASON OF 1889

CHARLES R. MILLIKEN
PROPRIETOR



CAMBRIDGE
JOHN WILSON AND SON
University Press
1889

11

*Gift
Mrs. John H. Lette
6-13-32*

CONTENTS.

| CHAPTER | PAGE |
|---|------|
| I. TO THE GREAT TRAVELLING PUBLIC | 7 |
| II. A WORD ABOUT WHITE MOUNTAIN TRAVEL | 10 |
| III. HISTORY OF THE GLEN HOUSE | 18 |
| IV. THE GLEN HOUSE DESCRIBED | 28 |
| V. THE RIDE FROM GLEN STATION | 32 |
| VI. PANORAMA OF MOUNTAINS FROM THE GLEN HOUSE | 43 |
| VII. EXCURSION TO THE CASCADES | 50 |
| VIII. ON THE GORHAM ROAD | 71 |
| IX. THE GREAT GULF AND MT. MADISON | 74 |
| X. TUCKERMAN'S RAVINE | 78 |
| XI. INTO CARTER NOTCH | 88 |
| XII. UP MT. WASHINGTON CARRIAGE-ROAD | 98 |
| XIII. ON THE SUMMIT | 108 |

1855

ILLUSTRATIONS.

| | PAGE |
|--|---------------------|
| I. FIRST VIEW OF THE GLEN HOUSE | <i>Frontispiece</i> |
| II. NEW GLEN HOUSE, WHITE MOUNTAINS | 25 |
| III. ROUTE MAP TO GLEN HOUSE AND VICINITY | 35 |
| IV. MOUNTS WASHINGTON, JEFFERSON, ADAMS, AND MADISON, FROM THE GLEN HOUSE | 39 |
| V. EMERALD POOL | 51 |
| VI. THOMPSON'S FALLS | 59 |
| VII. CRYSTAL CASCADE | 63 |
| VIII. GLEN ELLIS FALLS | 69 |

