

**THE REQUISITE AND  
QUALIFYING  
CONDITIONS OF ARTESIAN  
WELLS, PP. 131 - 173**

Published @ 2017 Trieste Publishing Pty Ltd

ISBN 9780649302260

The Requisite and Qualifying Conditions of Artesian Wells, pp. 131 - 173 by Thomas C. Chamberlin

Except for use in any review, the reproduction or utilisation of this work in whole or in part in any form by any electronic, mechanical or other means, now known or hereafter invented, including xerography, photocopying and recording, or in any information storage or retrieval system, is forbidden without the permission of the publisher, Trieste Publishing Pty Ltd, PO Box 1576 Collingwood, Victoria 3066 Australia.

All rights reserved.

Edited by Trieste Publishing Pty Ltd.  
Cover @ 2017

This book is sold subject to the condition that it shall not, by way of trade or otherwise, be lent, re-sold, hired out, or otherwise circulated without the publisher's prior consent in any form or binding or cover other than that in which it is published and without a similar condition including this condition being imposed on the subsequent purchaser.

[www.triestepublishing.com](http://www.triestepublishing.com)

**THOMAS C. CHAMBERLIN**

**THE REQUISITE AND  
QUALIFYING  
CONDITIONS OF ARTESIAN  
WELLS, PP. 131 - 173**



Folio  
TD  
410  
C44

*with complement of illustrations*  
OCT 3 0 1929

DEPARTMENT OF THE INTERIOR—U. S. GEOLOGICAL SURVEY  
J. W. POWELL, DIRECTOR



THE REQUISITE AND QUALIFYING CONDITIONS

OF

# ARTESIAN WELLS

BY

THOMAS C. CHAMBERLIN

[EXTRACT FROM THE FIFTH ANNUAL REPORT OF THE DIRECTOR, 1882-'84.]



WASHINGTON  
GOVERNMENT PRINTING OFFICE  
1885

## CONTENTS.

	Page
Introduction .....	131
Essential features of artesian wells .....	134
1. Typical examples .....	134
2. Prerequisites .....	134
The water-bearing beds.....	135
1. Fisured and channeled beds .....	135
2. Porous beds .....	136
The confining beds .....	137
1. The confining stratum below.....	138
2. The confining stratum above.....	139
The inclination of the beds .....	141
Height of outcropping beds.....	143
The reservoir or fountain-head.....	143
The collecting area.....	144
Effect of erosion and surface configuration .....	146
Advantages of low inclination of the strata.....	146
Surface condition of the porous bed.....	146
Rain-fall.....	147
Contrasted ratios of supply and demand.....	148
Irrigation by artesian wells.....	148
1. Equalization of supply .....	149
2. Supplemental reservoirs .....	149
3. Advantageous transfer.....	149
4. Reutilization of the water .....	149
Adequacy of rain-fall measured by capacity of strata.....	151
Escape of water at lower levels than the well.....	153
Conditions relating to the well itself.....	154
1. The rate of delivery .....	154
2. Methods of increasing the flow.....	154
a. Torpedoes.....	154
b. Enlarging the bore .....	155
c. One large or several small bores? .....	155
d. Distribution of wells.....	155
Loss of flow in the well.....	156
1. Friction .....	157
2. Lateral leakage .....	157
3. Control of flow .....	157
Height of flow .....	159
1. Measurement.....	159
2. Prognostic estimate .....	160
Detection of flow.....	159
Negative and false tests .....	160

	Page.
Conditions relating to the well itself—Continued.	
Effect of time on flow .....	162
1. Decline from loss of gaseous aid.....	163
2. Decline from loss of heat.....	163
3. Decline from increase of leakage.....	163
4. Decline from closure of the bore.....	164
5. Decline from defective piping.....	164
6. Decline from exhaustion.....	164
7. Detection of cause of decline.....	165
Character of the water .....	165
1. Temperature .....	165
2. Chemical impregnations .....	165
Limits in depth .....	167
The art of sinking wells.....	168
1. Superiority of methods in the oil regions.....	168
2. Use of the diamond drill.....	169
3. Driven wells.....	169
4. Earth augers.....	169
5. Cost of wells.....	169
Record of drillings.....	170
Interpretation of drillings.....	171
Areas of favorable, doubtful, and adverse probabilities.....	172
Special study.....	173

## ILLUSTRATIONS.

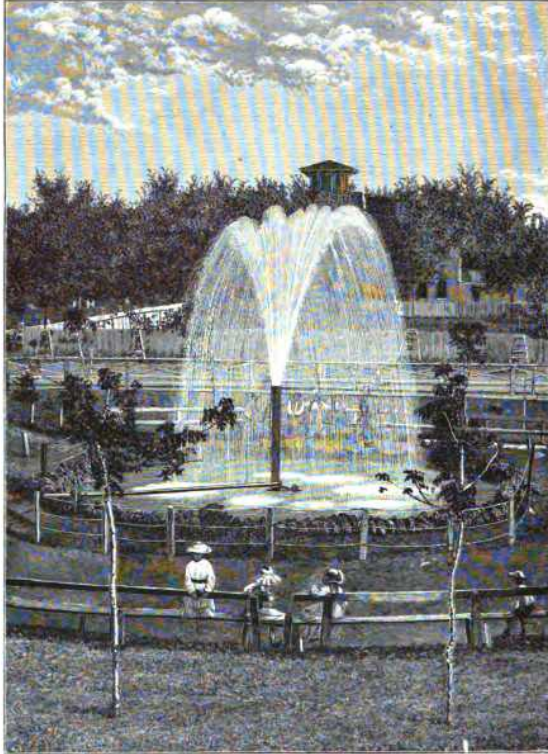
	Page
PLATE XXI.—Artesian well at Prairie du Chien, Wis.....	131
FIG. 7.—Longitudinal section of a stream illustrating its upward currents....	133
8.—Profile of the Chicago artesian stream.....	133
9.—Ideal section, illustrating the chief conditions of artesian wells.....	133
10.—Section illustrating the thinning out of a water-bearing stratum.....	134
11.—Section illustrating the transition of a porous into an impervious bed.	134
12.—Section illustrating the usual order of outcrops of the strata of a basin.	138
13.—Section illustrating the effects of erosion upon the outcropping strata.	139
14.—Section illustrating the failure of an artesian well from a defective confining bed below.....	139
15.—Section illustrating the effects of a high-water level in the cover-area.	140
16.—Double section illustrating the effects of high and low-water surfaces in the cover-area.....	141
17.—Section illustrating the possibility of a flow from a bed even when exposed at a point lower than the well.....	142
18.—Section showing the dependence of the collecting area on the thickness and dip of the porous beds.....	145
19.—Section showing the effect of erosion on the surface exposure of the porous bed.....	145
20.—Section illustrating the advantages of a low inclination of the strata.	148
21.—Tabular section showing disadvantageous arrangement of wells.....	156
22.—Tabular section showing disadvantageous arrangement of wells.....	156
23.—Tabular section showing advantageous arrangement of wells.....	156
24.—Tabular section showing advantageous arrangement of wells.....	156
25.—Seed-bag.....	157
26.—Rubber packing.....	158
27.—Rubber packing.....	158
28.—Section of a well illustrating a negative test.....	160
29.—Section of a well illustrating a partial test.....	161
30.—Section of a well illustrating an inverted test.....	161
31.—Section of strata and three wells showing one correct and two erro- neous tests.....	162

(129)



\_\_\_\_\_





ARTESIAN WELL AT PRAIRIE DU CHIEN, WISCONSIN.