

**LIST OF PARISH  
REGISTERS AND OTHER  
GENEALOGICAL WORKS**

Published @ 2017 Trieste Publishing Pty Ltd

ISBN 9780649320257

List of Parish Registers and Other Genealogical Works by Frederick Arthur Crisp

Except for use in any review, the reproduction or utilisation of this work in whole or in part in any form by any electronic, mechanical or other means, now known or hereafter invented, including xerography, photocopying and recording, or in any information storage or retrieval system, is forbidden without the permission of the publisher, Trieste Publishing Pty Ltd, PO Box 1576 Collingwood, Victoria 3066 Australia.

All rights reserved.

Edited by Trieste Publishing Pty Ltd.  
Cover @ 2017

This book is sold subject to the condition that it shall not, by way of trade or otherwise, be lent, re-sold, hired out, or otherwise circulated without the publisher's prior consent in any form or binding or cover other than that in which it is published and without a similar condition including this condition being imposed on the subsequent purchaser.

[www.triestepublishing.com](http://www.triestepublishing.com)

**FREDERICK ARTHUR CRISP**

**LIST OF PARISH  
REGISTERS AND OTHER  
GENEALOGICAL WORKS**



LIST OF

**Parish Registers**

AND OTHER

GENEALOGICAL WORKS

EDITED BY

*FREDERICK ARTHUR CRISP*

*London.*

1898

~~10493.2272~~

Rs 5526,257

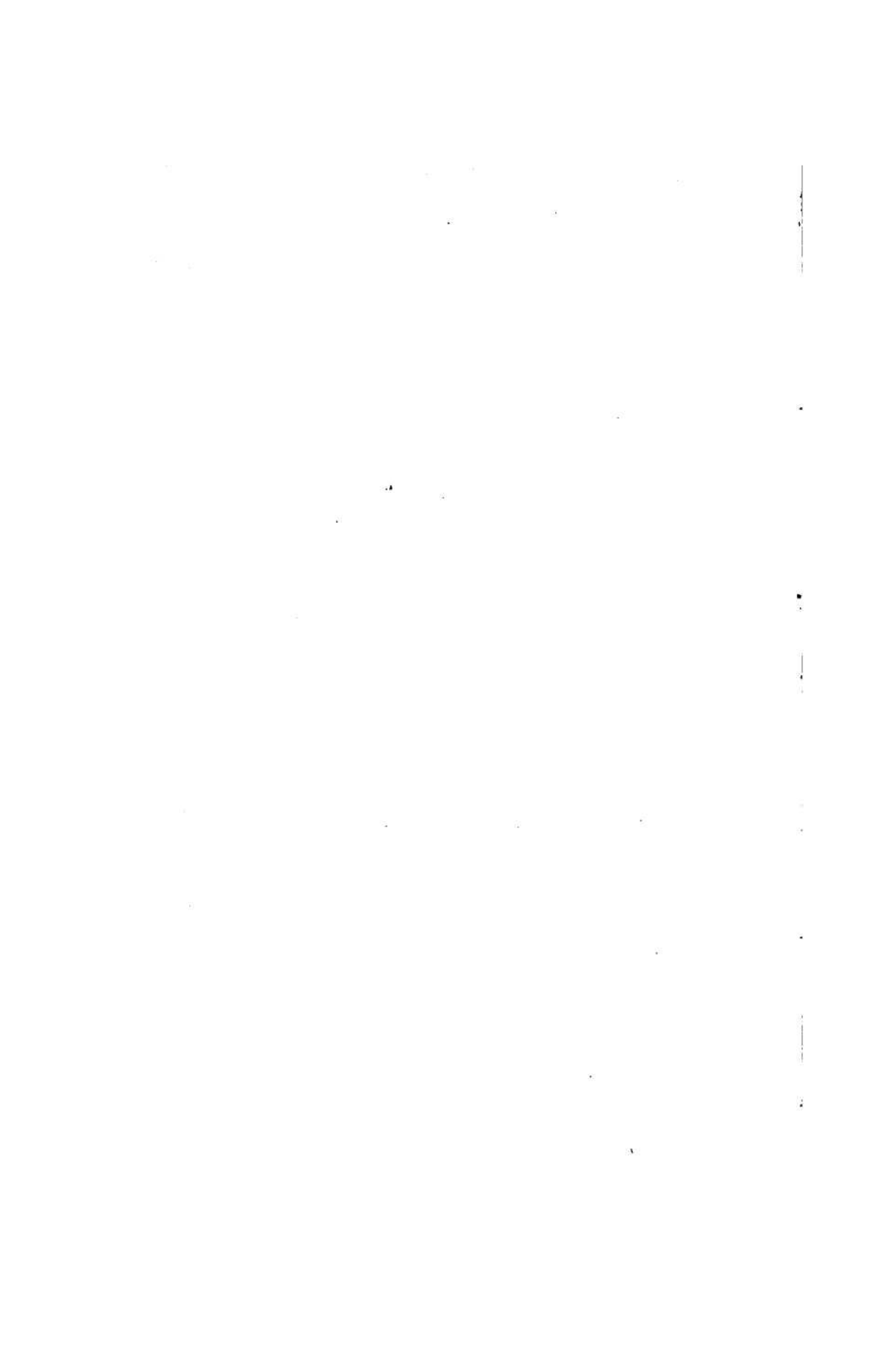


From  
The Author

# Contents.

## PARISH REGISTERS, &c.

|   | Page |
|---|------|
| <b>Berkshire.</b>   |      |
| Catholic Registers of Ufton Court and Woolhampton                             | 1    |
| <b>Buckinghamshire.</b>   |      |
| Catholic Registers of Weston-Underwood  | 1    |
| <b>Denbighshire.</b>  |      |
| Registers of Kegidog, <i>alias</i> St. George, near Abergele                  | 2    |
| <b>Essex.</b>   |      |
| Registers of Beaumont   | 2    |
| Registers of Bobbingworth   | 3    |
| Registers of St. Leonard's, Colchester  | 4    |
| Registers of Fyfield  | 4    |
| Registers of Greensted, near Ongar  | 5    |
| Registers of Lambourne  | 5    |
| Registers of Moreton  | 5    |
| Registers of Mose   | 6    |
| Registers of Ongar  | 7    |
| Registers of Stapleford Tawney  | 8    |
| Registers of Stifford   | 8    |
| Sepulchral Memorials, Bobbingworth  | 4    |
| <b>Gloucestershire.</b>   |      |
| Registers of Berkeley   | 9    |
| Registers of Kempford   | 9    |
| Registers of Marshfield   | 10   |
| <b>Herefordshire.</b>   |      |
| Registers of Fownhope   | 11   |
| <b>Kent.</b>  |      |
| Registers of Birchington  | 11   |
| Registers of the French Church at Dover                                       | 14   |
| <b>Leicestershire.</b>  |      |
| Registers of Newton-Linford   | 15   |
| <b>Lincolnshire.</b>  |      |
| Registers of Stubton  | 15   |
| Registers of Irby-upon-Humber   | 15   |
| <b>Middlesex.</b>   |      |
| Registers of Staines  | 16   |
| Monumental Inscriptions in the Church and Churchyard<br>of St. Olave's, Jewry | 16   |





CONTENTS—*continued.*

|  | Page |
|--|------|
| <b>Somersetshire.</b>  |      |
| Somersetshire Wills (6 Vols.)  | 17   |
| <b>Suffolk.</b>  |      |
| Registers of Brundish  | 20   |
| Registers of Carlton   | 21   |
| Registers of Chillesford   | 21   |
| Registers of Culpho  | 22   |
| Registers of Ellough   | 22   |
| Registers of Frostenden  | 23   |
| Registers of St. Peter's, Ipswich  | 24   |
| Registers of Kelsale   | 24   |
| Registers of Pakenham  | 26   |
| Registers of Tannington  | 26   |
| Monumental Inscriptions in the Church and Churchyard<br>of Ellough                               | 27   |
| Calendar of Wills at Ipswich, 1444-1600  | 27   |
| <b>Surrey.</b>   |      |
| Catholic Registers of Woburn-Lodge and Weybridge   | 27   |
| <b>Warwickshire.</b>   |      |
| Baptisms in the Private Chapel of Sir William Sheldon of<br>Weston in the parish of Long Compton | 28   |
| <b>Worcestershire.</b>   |      |
| Catholic Registers of the City of Worcester  | 29   |
| Registers of Crophorne   | 28   |
| —  |      |
| <b>Visitation of England and Wales.</b>  |      |
| Vol. 1   | 33   |
| Vol. 2   | 35   |
| Vol. 3   | 36   |
| Vol. 4   | 37   |
| Vol. 5   | 37   |
| <b>Visitation of Ireland.</b>  |      |
| Vol. 1   | 41   |
| Vol. 2   | 42   |
| <b>Family of Crispe.</b>   |      |
| Vol. 1   | 45   |
| Vol. 2   | 45   |
| Vol. 3   | 45   |
| Vol. 4   | 45   |
| <b>Fragmenta Genealogica.</b>  |      |
| Vol. 1   | 49   |
| Vol. 2   | 49   |
| Vol. 3   | 50   |
| Vol. 4   | 50   |

████████████████████

████████████████████

████████████████████

PARISH REGISTERS, &c.