

**FIELD COLUMBIAN MUSEUM,
PUBLICATION 56, ANTHROPOLOGICAL
SERIES, VOL. II, NO. 5:
ARCHÆOLOGICAL INVESTIGATIONS ON
THE ISLAND OF LA PLATA, ECUADOR**

Published @ 2017 Trieste Publishing Pty Ltd

ISBN 9780649522255

Field Columbian Museum, Publication 56, Anthropological Series, Vol. II, No. 5: Archæological Investigations on the Island of La Plata, Ecuador by George A. Dorsey

Except for use in any review, the reproduction or utilisation of this work in whole or in part in any form by any electronic, mechanical or other means, now known or hereafter invented, including xerography, photocopying and recording, or in any information storage or retrieval system, is forbidden without the permission of the publisher, Trieste Publishing Pty Ltd, PO Box 1576 Collingwood, Victoria 3066 Australia.

All rights reserved.

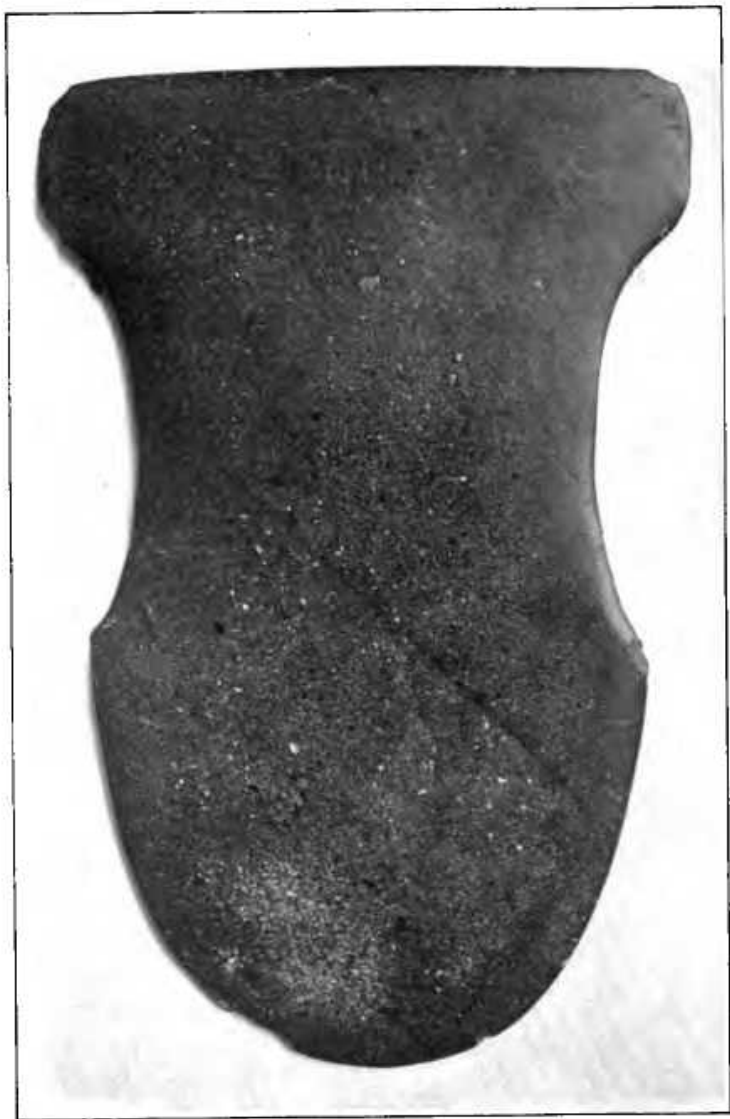
Edited by Trieste Publishing Pty Ltd.
Cover @ 2017

This book is sold subject to the condition that it shall not, by way of trade or otherwise, be lent, re-sold, hired out, or otherwise circulated without the publisher's prior consent in any form or binding or cover other than that in which it is published and without a similar condition including this condition being imposed on the subsequent purchaser.

www.triestepublishing.com

GEORGE A. DORSEY

**FIELD COLUMBIAN MUSEUM,
PUBLICATION 56, ANTHROPOLOGICAL
SERIES, VOL. II, NO. 5:
ARCHÆOLOGICAL INVESTIGATIONS ON
THE ISLAND OF LA PLATA, ECUADOR**



CEREMONIAL STONE AXE.

FIELD COLUMBIAN MUSEUM

PUBLICATION 56.

ANTHROPOLOGICAL SERIES.

VOL. II, No. 5.

ARCHÆOLOGICAL
INVESTIGATIONS ON THE ISLAND
OF LA PLATA, ECUADOR.

BY

GEORGE A. ^{Ames}DORSEY,

Curator, Department of Anthropology.



CHICAGO, U. S. A.

April, 1901.

THE NEW YORK
PUBLIC LIBRARY
236718
ASTOR, LENOX AND
TILDEN FOUNDATIONS.
1902

CONTENTS. ?

	PAGE.
Introduction,	251
The journey to the island,	253
Geographical position and physical character of the island,	253
I. GRAVES,	254
Character of the earth excavated,	255
The grave and its contents,	255
Images of gold and silver,	255
Image of bronze,	257
Gold cup,	257
Pendants, topes and other objects of copper and gold,	258
Pottery,	258
Ceremonial stone axe,	259
II. REFUSE HEAPS OF THE PLATEAU,	260
STONE.	
Rectangular and circular engraved stones,	261
Rectangular stones without ornamentation,	263
Circular stones without ornamentation,	263
Cylindrical-shaped stones not perforated,	263
Perforated and engraved stones,	264
Perforated stone beads,	264
Engraved stones representing the human face,	265
Fragmentary masses and worked beads of turquoise, etc.,	266
Miscellaneous worked stones,	266
POTTERY.	
Pottery—general character,	266
Complete specimens,	267
Treatment of the head—no covering,	268
Head decoration; pyramidal projections,	269
Face bounded by broad projecting band,	269
Heads with simple and undecorated treatment,	270
Grotesque heads,	271
Treatment of the nose,	272
Treatment of the eyes,	273
Treatment of the upper extremities,	273
Treatment of the lower extremities,	274
Objects found in the hands of the images,	275
Serpent head-dresses,	276
Animal forms,	277
Bird forms,	277
Miscellaneous objects of pottery,	277
General observations concerning the pottery,	278
General conclusions,	279

ILLUSTRATIONS

- PLATE.
- XL. Gold and silver images.
 - XLI. Images of gold, stone and bronze.
 - XLII. Earthenware vessel from grave.
 - XLIII. Ceremonial stone axe.
 - XLIV. Squared incised stones.
 - XLV. Squared incised stones.
 - XLVI. Squared incised stones.
 - XLVII. Circular incised stones.
 - XLVIII. Squared incised stones.
 - XLIX. Squared incised stones.
 - L. Squared stones with incised edges.
 - LI. Circular incised stones.
 - LII. Rectangular stones without ornamentation.
 - LIII. Oblong stones without ornamentation.
 - LIV. Circular stones without ornamentation.
 - LV. Circular perforated stones.
 - LVI. Cylindrical-shaped stones.
 - LVII. Perforated and engraved stones.
 - LVIII. Fragments of perforated and engraved stones.
 - LIX. Perforated stone beads.
 - LX. Perforated stone beads.
 - LXI. Engraved stones representing the human face.
 - LXII. Rough mass of serpentine.
 - LXIII. Rough mass of green marble.
 - LXIV. Beads of pagodite and turquoise.
 - LXV. Beads of lapis lazuli.
 - LXVI. Beads of agalmatolite.
 - LXVII. *a*, Small stone animal; *b*, cone-shaped stone.
 - LXVIII. Fragment of stone metate.
 - LXIX. Two earthenware images, front view.
 - LXX. Two earthenware images, side view.
 - LXXI. Image—no head covering.
 - LXXII. Head of image, pyramidal projections.
 - LXXIII. Head and body of image, pyramidal projections.
 - LXXIV. Head of image.
 - LXXV. Heads of images, faces bounded by broad bands.
 - LXXVI. Heads of images, faces bounded by broad bands.
 - LXXVII. Head of image, ear ornamentation.
 - LXXVIII. Heads of images, simple treatment of head-dress.
 - LXXIX. Heads of images, simple treatment of head-dress.
 - LXXX. Heads of images, simple treatment of head-dress.
 - LXXXI. Portion of female figure holding club.
 - LXXXII. Grotesque heads.

PLATE.

- LXXXIII. Grotesque heads.
 LXXXIV. Fragments of vessels.
 LXXXV. Fragments showing treatment of the nose.
 LXXXVI. Specimens showing treatment of the nose.
 LXXXVII. Fragments of images showing treatment of the eyes.
 LXXXVIII. Specimens showing treatment of the upper extremities.
 LXXXIX. Specimens showing treatment of the lower extremities.
 XC. Specimens showing treatment of the lower extremities.
 XCI. Fragment of large image showing female breast.
 XCII. Images with a bird resting on the arm.
 XCIII. Fragments with arms holding small jars.
 XCIV. Fragments with arms holding small images.
 XCV. Small images.
 XCVI. Fragment of image showing serpent head-dress.
 XCVII. Fragments of heads bearing conventionalized serpents' heads.
 XCVIII. Fragments of bodies bearing conventionalized serpents' heads.
 XCIX. Fragments bearing conventionalized serpents' heads.
 C. Fragments representing conventionalized quadrupeds.
 CI. Bird forms.
 CII. Miscellaneous objects of pottery.

FIGURE.

37. Outline map of La Plata island, drawn from a sketch.
 38. Map of portion of island explored.
 39. Idealized view of vertical section of excavations in the triangle.
 40. Gold cup.
 41. Earthenware vessel from grave.
 42. Outline drawing of ceremonial stone axe (full size).
 43. Representative squared and circular engraved stones.
 44. Perforated and engraved stone.
 45. Engraved stone representing the human face.
 46. Earthenware image showing position of whistles.

