

**STANFORD MEMORIAL  
CHURCH: THE  
MOSAICS, THE WINDOWS,  
THE INSCRIPTIONS**

Published @ 2017 Trieste Publishing Pty Ltd

ISBN 9780649016242

Stanford Memorial Church: The Mosaics, the Windows, the Inscriptions by Willis L. Hall

Except for use in any review, the reproduction or utilisation of this work in whole or in part in any form by any electronic, mechanical or other means, now known or hereafter invented, including xerography, photocopying and recording, or in any information storage or retrieval system, is forbidden without the permission of the publisher, Trieste Publishing Pty Ltd, PO Box 1576 Collingwood, Victoria 3066 Australia.

All rights reserved.

Edited by Trieste Publishing Pty Ltd.  
Cover @ 2017

This book is sold subject to the condition that it shall not, by way of trade or otherwise, be lent, re-sold, hired out, or otherwise circulated without the publisher's prior consent in any form or binding or cover other than that in which it is published and without a similar condition including this condition being imposed on the subsequent purchaser.

[www.triestepublishing.com](http://www.triestepublishing.com)

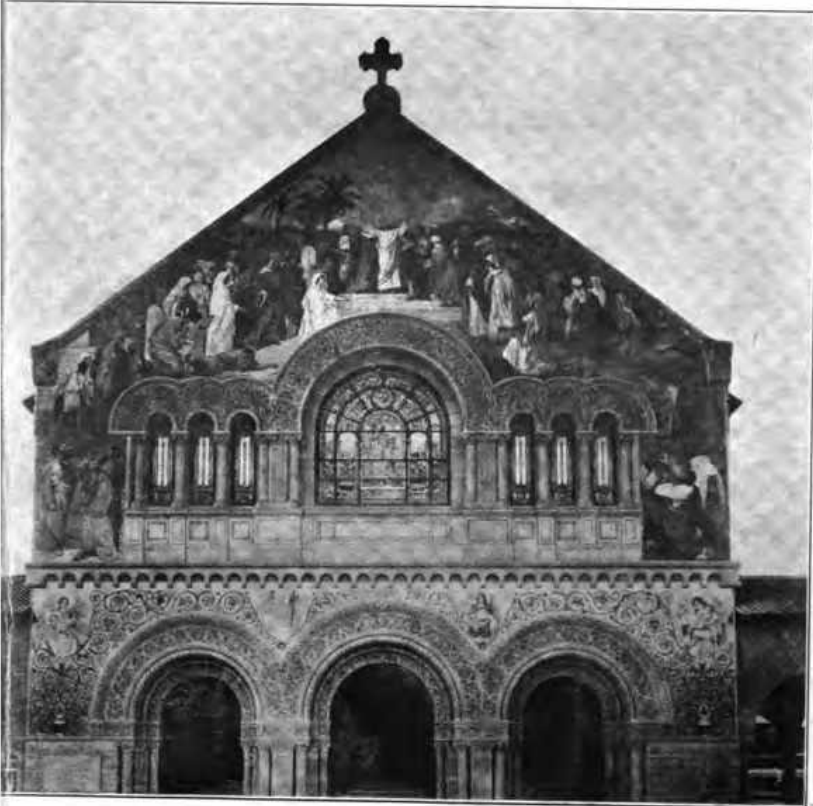
**WILLIS L. HALL**

**STANFORD MEMORIAL  
CHURCH: THE  
MOSAICS, THE WINDOWS,  
THE INSCRIPTIONS**



378.74  
S 785wh

*rel. to 1885*



STANFORD  
MEMORIAL CHURCH



THE PALO ALTO TREE



STANFORD.  
MEMORIAL CHURCH

THE MOSAICS, THE WINDOWS,  
THE INSCRIPTIONS

BY WILLIS L. HALL

Copyright, 1917, by Willis L. Hall

PRICE FIFTY CENTS

PRINTED BY  
TIMES PUBLISHING COMPANY  
PALO ALTO, CALIFORNIA

1917

STANFORD UNIVERSITY



LELAND STANFORD JUNIOR

MRS. JANE LATHROP STANFORD

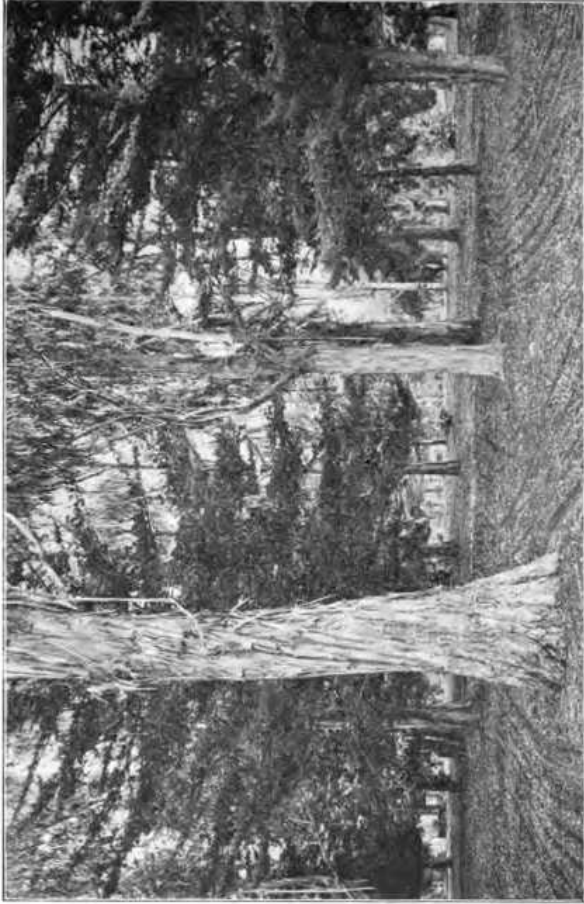
SENATOR LELAND STANFORD



## CONTENTS

	PAGE
Introduction .....	5
Stanford Memorial Church .....	15
The Mosaics .....	25
The Windows .....	35
The Inscriptions .....	39
Illustrations--	
The Stanford Family—Leland Stanford, Jr., Mrs. Jane Lathrop Stanford,	
Senator Leland Stanford .....	2
Some of the Trees in the Arboretum .....	4
Original Main Gateway to the Stanford Campus .....	6
Eucalyptus Trees in the Arboretum .....	8
View of Stanford from the Lathrop Residence .....	9
President Wilbur and Chancellor Jordan .....	10
Dr. John C. Branner .....	11
Academic Procession at Installation of Dr. Branner .....	12
Academic Procession at Installation of Dr. Wilbur .....	13
Original Stanford Memorial Church .....	14
Stanford Memorial Church Restored .....	16
On the Inner Quadrangle at the Wilbur Installation .....	18
The Chancel and Apse in the Original Church .....	19
Western Portion of Chancel and Apse in Original Church .....	20
A Fraternity House .....	22
A Stanford Graduating Class in Commencement Parade .....	24
Lobby of the Stanford Museum of Fine Arts .....	26
A Roadway Scene Near Stanford .....	34
The Annunciation .....	36
A Corner of the Outer Quadrangle .....	38
In the Foothill Country .....	42
The Roadway back of the University .....	43
The Stanford Battalion Receiving the Colors .....	44
The Stanford Family Statuary Group .....	46
Roble Hall, First Dormitory for Women .....	47
The Stanford Mausoleum .....	48

240942



SOME OF THE TREES IN THE ARBORETUM

## INTRODUCTION



O varied and numerous are the features of Leland Stanford Junior University it would require a large volume to do them any sort of justice. Hence that is not attempted in this book. Aside from the educational work carried on by the institution its most notable feature is the Memorial Church, to which attention is turned. However, a few words about the university itself are given.

Leland Stanford Junior University was founded by Senator Leland and Mrs. Jane Lathrop Stanford as a memorial to their only son, who died abroad March 13, 1884. The founders decided to devote nearly all of their large fortune to the endowment of the university. They appointed a board of trustees, which board is now in control. During the greater part of their lives after founding the university Senator and Mrs. Stanford were in direct control of everything concerning it. Senator Stanford died June 21, 1893. Mrs. Stanford relinquished control June 1, 1903, but remained a member of the board of trustees until her death a few years later.

The board of trustees at the present time is composed of the following:

Frank Bartow Anderson, San Francisco.  
Ralph Arnold, Los Angeles.  
William Babcock, San Rafael.  
Frank Prentiss Deering, San Francisco.  
Charles Parmelee Eells, San Francisco.  
Joseph Donohoe Grant, San Francisco.  
Herbert C. Hoover, San Francisco.  
Timothy Hopkins, Menlo Park.  
Samuel Franklin Leib, San Jose.  
Percy T. Morgan, San Francisco.  
William Mayo Newhall, San Francisco.