

**LULLABY-LAND,  
SONGS OF  
CHILDHOOD**

Published @ 2017 Trieste Publishing Pty Ltd

ISBN 9780649190225

Lullaby-land, songs of childhood by Eugene Field

Except for use in any review, the reproduction or utilisation of this work in whole or in part in any form by any electronic, mechanical or other means, now known or hereafter invented, including xerography, photocopying and recording, or in any information storage or retrieval system, is forbidden without the permission of the publisher, Trieste Publishing Pty Ltd, PO Box 1576 Collingwood, Victoria 3066 Australia.

All rights reserved.

Edited by Trieste Publishing Pty Ltd.  
Cover @ 2017

This book is sold subject to the condition that it shall not, by way of trade or otherwise, be lent, re-sold, hired out, or otherwise circulated without the publisher's prior consent in any form or binding or cover other than that in which it is published and without a similar condition including this condition being imposed on the subsequent purchaser.

[www.triestepublishing.com](http://www.triestepublishing.com)

**EUGENE FIELD**

**LULLABY-LAND,  
SONGS OF  
CHILDHOOD**







BOOKS ILLUSTRATED BY  
CHARLES ROBINSON

LULLABY-LAND ) ) ) ) )  
BY EUGENE FIELD ) ) ) ) )  
A CHILD'S GARDEN OF VERSES.  
BY R. L. STEVENSON. ) ) ) ) )

"Mr. Robinson's drawings have an imaginative quality as rare as it is pleasurable to discover, a quality that children themselves are very quick to recognize, and that when set before them in appropriate, graphic form, is one of the most important of all aids to their intellectual development."—*Boston Beacon*.

# LULLABY LAND.

Songs of Childhood,

by

EUGENE FIELD,

*Selected by* KENNETH  
GRAHAME. *and*

*Illustrated by* CHARLES  
ROBINSON.



TORONTO  
GEORGE N. MORANG & COMPANY  
LIMITED



Entered according to Act of the Parliament of  
Canada, in the year nineteen hundred, by  
GEORGE N. MORANG & COMPANY, LIMITED, at  
the Department of Agriculture.



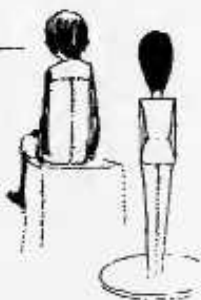
Lullaby-  
land.



LULLABY-  
LAND.



# Preface.



*There is a sort of a garden—  
or rather an estate, of park  
and fallow and waste—nay,  
perhaps we may call it a kingdom, albeit a  
noman's-land and an everyman's land—which  
lies so close to the frontier of our work-a-day  
world that a step will take us therein. Indeed,*