

**MEMOIRS OF  
EXPLORATIONS IN THE  
BASIN OF THE MISSISSIPPI.  
VOLUME I. QUIVIRA**

Published @ 2017 Trieste Publishing Pty Ltd

ISBN 9780649472208

Memoirs of Explorations in the Basin of the Mississippi. Volume I. Quivira by J. V. Brower

Except for use in any review, the reproduction or utilisation of this work in whole or in part in any form by any electronic, mechanical or other means, now known or hereafter invented, including xerography, photocopying and recording, or in any information storage or retrieval system, is forbidden without the permission of the publisher, Trieste Publishing Pty Ltd, PO Box 1576 Collingwood, Victoria 3066 Australia.

All rights reserved.

Edited by Trieste Publishing Pty Ltd.  
Cover @ 2017

This book is sold subject to the condition that it shall not, by way of trade or otherwise, be lent, re-sold, hired out, or otherwise circulated without the publisher's prior consent in any form or binding or cover other than that in which it is published and without a similar condition including this condition being imposed on the subsequent purchaser.

[www.triestepublishing.com](http://www.triestepublishing.com)

**J. V. BROWER**

**MEMOIRS OF  
EXPLORATIONS IN THE  
BASIN OF THE MISSISSIPPI.  
VOLUME I. QUIVIRA**





FIG. 1.

VIEW AT THE ELLIOTT VILLAGE SITE.



FIG. 2.

VIEW AT CHERT QUARRY ON KING CREEK.

---

MEMOIRS  
OF  
EXPLORATIONS IN THE BASIN OF THE MISSISSIPPI.

---

VOLUME I.

---

QUIVIRA.

BY  
J. V. BROWER,  
AUTHOR OF *The Missouri River, ETC.*

ST. PAUL, MINNESOTA, U. S. A.

1898.

Ar 10201  
f



*Edward L. Collins*  
*2 vols.*

**COPYRIGHT, 1898,  
BY JACOB V. BROWER.  
(ALL RIGHTS RESERVED).**

**H. L. COLLINS COMPANY,  
ST. PAUL.**

FIRST EDITION.

---

THREE HUNDRED NUMBERED AUTOGRAPH COPIES.

---

NUMBER *72*

---

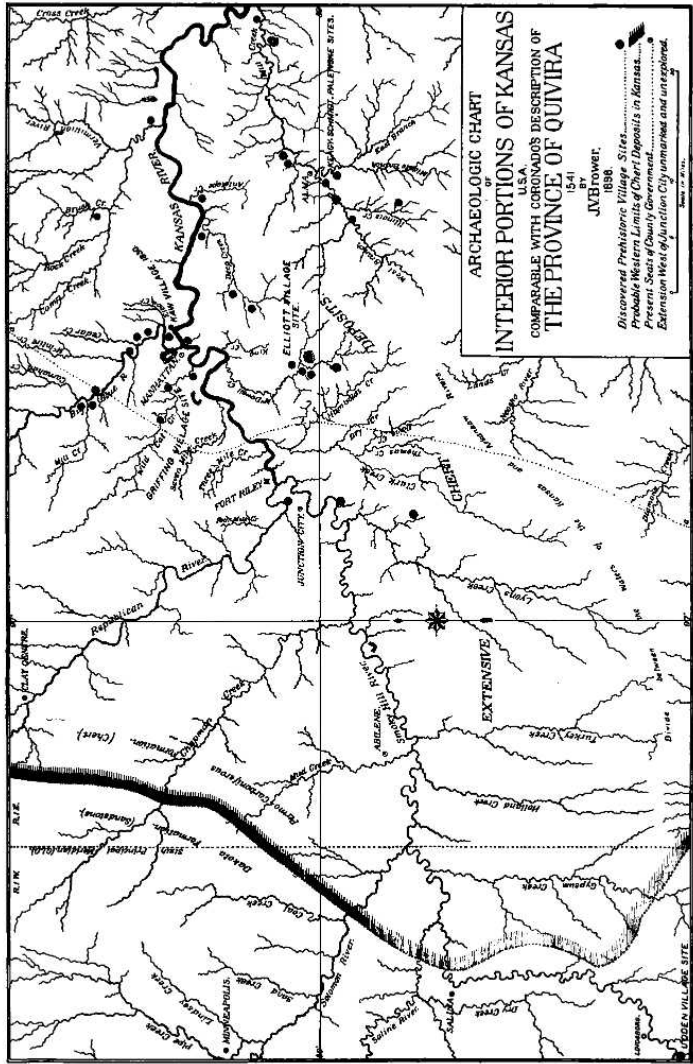
TO THE PRESIDENT, OFFICERS AND MEMBERS  
OF THE

HISTORICAL SOCIETY OF KANSAS,

THIS MEMOIR IS RESPECTFULLY  
ADDRESSED BY

*J. W. Brower*





ARCHAEOLOGIC CHART  
 OF  
 INTERIOR PORTIONS OF KANSAS  
 U.S.A.  
 COMPARABLE WITH CORONADO'S DESCRIPTION OF  
 THE PROVINCE OF QUIVIRA  
 1541  
 BY  
 J.V. Brower,  
 1886  
 Discovered Prehistoric Village Sites  
 in the Province of Quivira, Deposited in Kansas  
 Present State of Quivira, City of Lawrence and  
 Extension West of Junction City unmarked and unexplored.

1886  
 J.V. Brower

LEAVENWORTH SITE

## DESCRIPTIVE LEGEND.

### TO ACCOMPANY THE CHART.

Area covered by the chart, about 5,410 square miles.

a. . . . . a represents the approximate line of Coronado's march as marked on the map of General J. H. Simpson. (P. 309, Smithsonian Report, 1869).

The chert deposits dip under the Dakota Formation, and are said to be exposed in deep ravines at remote points west of the Permo-Carboniferous Formation.

The area south of the Kansas River involved in the drift deposits, is in the neighborhood of Deep and Antelope Creeks.

The Kansas Agricultural College is at Manhattan.

Pottawatomie County is north of the Kansas River and east of the Big Blue River.

Wabaunsee County is south of the Kansas River, at Alma and Mill Creek.

Riley County is west of the Big Blue, east of the Republican and (principally) north of the Kansas River.

Geary County includes the Elliott Village Site, Junction City and Fort Riley.

Clay Center is in Clay County, Abilene in Dickinson, Minneapolis in Ottawa, Salina in Saline and Lindsborg is in McPherson County.

Precautionary to the rights of other explorers and writers, the names used to designate old Indian Village Sites have not been extended on the chart, except in the cases of the Griffing Site, the Elliott Site, the Keagy-Schmidt-Palenke Sites, the Udden Site and the Kaw Village of 1880.

The names used in this *Memoir*, to more conveniently designate other ancient village sites, from the east toward the west, are as follows:

Dike Village Site, on Vermilion River.

Baldwin Village Site, on Antelope Creek.

Winkler Village Site, on Illinois Creek.

Hill Village Site, on Big Blue River, below mouth of Carnahan Creek.

Stockdale Village Sites, on Big Blue River, near mouth of Mill Creek. (There are two Mill Creeks on the chart).

Disney Village Site, below mouth of Cedar Creek.

Richards Village Site, south of Disney Site.

McArthur Village Site, farthest south on McDowell Creek.

Henderson Village Site, on the south side of Smoky Hill River, first above Junction City.

Other village sites are known to exist within the limits of the area covered by the chart, which have not been displayed thereon for want of sufficiently correct descriptions to enable an intelligible identification of the localities to be made.

There are many mounds, so-called, situated on the bluffs adjacent to the village sites displayed, which are ordinary places of burial, covered over with rock and earth. The main object of the chart is to show the location of the different village sites, and confusion might occur if the mounds also were extended in color thereon, and for that reason it was thought best to omit them at this time, until such further exploration can be made as will determine the location and character of all of them, which will be sufficient material for a separate *Memoir*.

The eastern surface limit of the chert deposits is very irregular, and may have been disturbed by the glacial ice-cap. Quartzite boulders are now exposed on the surface near the Vermilion River.

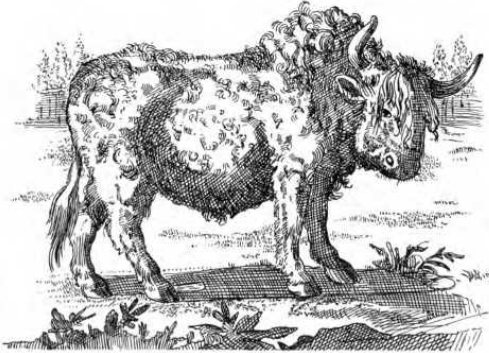
A network of railroad lines covers the area charted, and the present population is considerable, organized into civil divisions by numerous communities, which are principally sustained by the results of agricultural pursuits.



GOMARA, 1654.



THURET, 1658.



HENNEPIN, 1704.

BUFFALO.

Tracings from Early Sketches.