

**REMAINS, HISTORICAL AND
LITERARY, CONNECTED WITH THE
PALATINE COUNTIES OF
LANCASTER AND CHESTER, VOL.**

33

Published @ 2017 Trieste Publishing Pty Ltd

ISBN 9780649689200

Remains, Historical and Literary, Connected with the Palatine Counties of Lancaster and Chester, Vol. 33 by G. F. Piccope

Except for use in any review, the reproduction or utilisation of this work in whole or in part in any form by any electronic, mechanical or other means, now known or hereafter invented, including xerography, photocopying and recording, or in any information storage or retrieval system, is forbidden without the permission of the publisher, Trieste Publishing Pty Ltd, PO Box 1576 Collingwood, Victoria 3066 Australia.

All rights reserved.

Edited by Trieste Publishing Pty Ltd.
Cover @ 2017

This book is sold subject to the condition that it shall not, by way of trade or otherwise, be lent, re-sold, hired out, or otherwise circulated without the publisher's prior consent in any form or binding or cover other than that in which it is published and without a similar condition including this condition being imposed on the subsequent purchaser.

www.triestepublishing.com

G. F. PICCOPE

**REMAINS, HISTORICAL AND
LITERARY, CONNECTED WITH THE
PALATINE COUNTIES OF
LANCASTER AND
CHESTER, VOL. 33**

REMAINS
HISTORICAL & LITERARY
CONNECTED WITH THE PALATINE COUNTIES OF
LANCASTER AND CHESTER,
PUBLISHED BY
THE CHETHAM SOCIETY.

33
VOL. ~~XLIII~~

PRINTED FOR THE CHETHAM SOCIETY.
M.DCCC.LVII



COUNCIL FOR 1856-57.

JAMES CROSSLEY, Esq., F.S.A., PRESIDENT.

REV. RICHARD PARKINSON, D.D., F.S.A., CANON OF MANCHESTER AND
PRINCIPAL OF ST. BEES COLLEGE, VICE-PRESIDENT.

WILLIAM BEAMONT.

THE VERY REV. GEORGE HULL BOWERS, D.D., DEAN OF MANCHESTER.

REV. JOHN BOOKER, M.A., F.S.A.

REV. THOMAS CORSER, M.A., F.S.A.

MATTHEW DAWES, F.S.A., F.G.S.

JOHN HARLAND, F.S.A.

EDWARD HAWKINS, F.R.S., F.S.A., F.L.S.

THOMAS HRYWOOD, F.S.A.

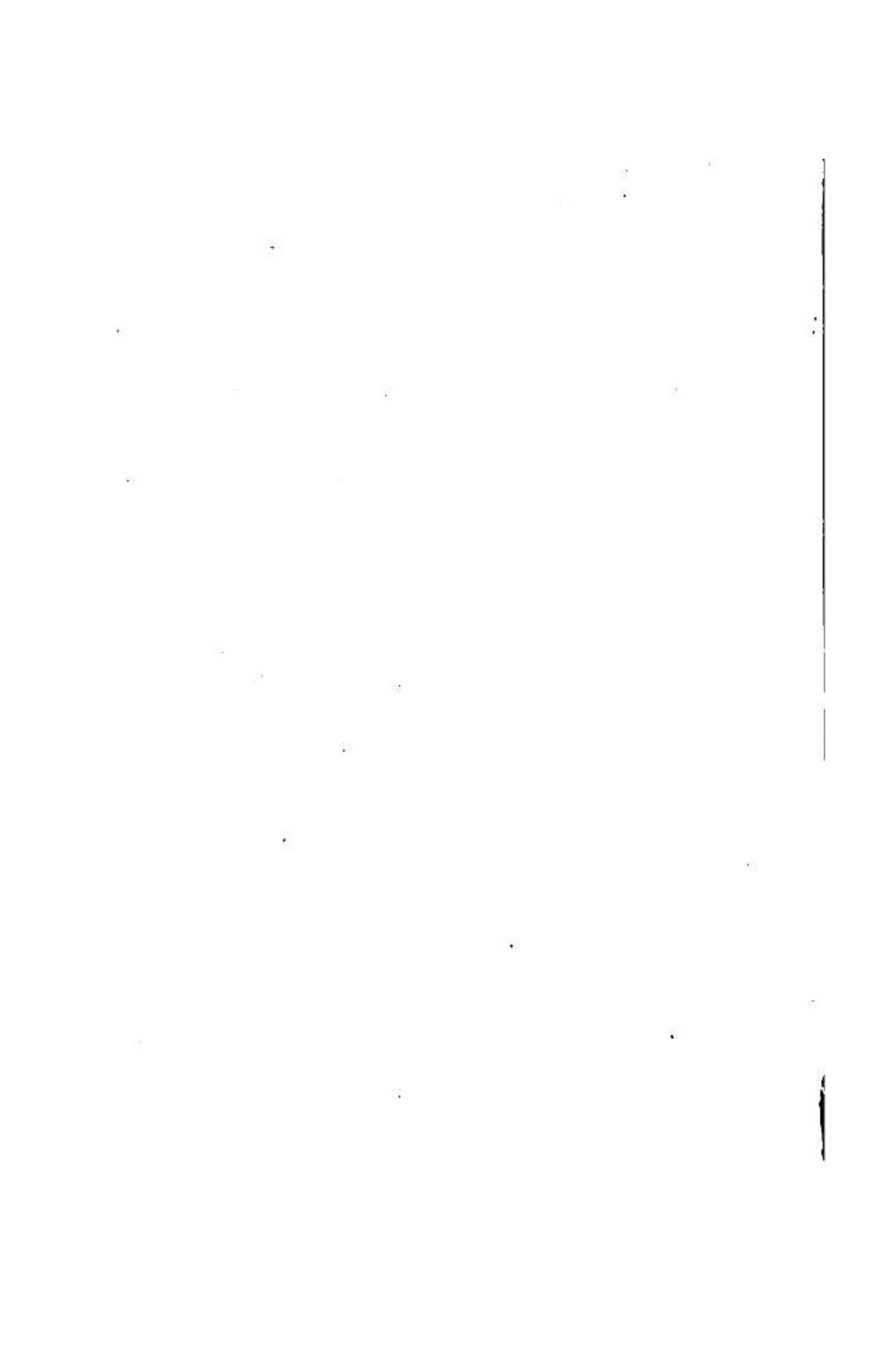
W. A. HULTON.

REV. F. R. RAINES, M.A., F.S.A.

ARTHUR H. HRYWOOD, TREASURER.

WILLIAM LANGTON, HON. SECRETARY.





LANCASHIRE AND CHESHIRE
WILLS AND INVENTORIES

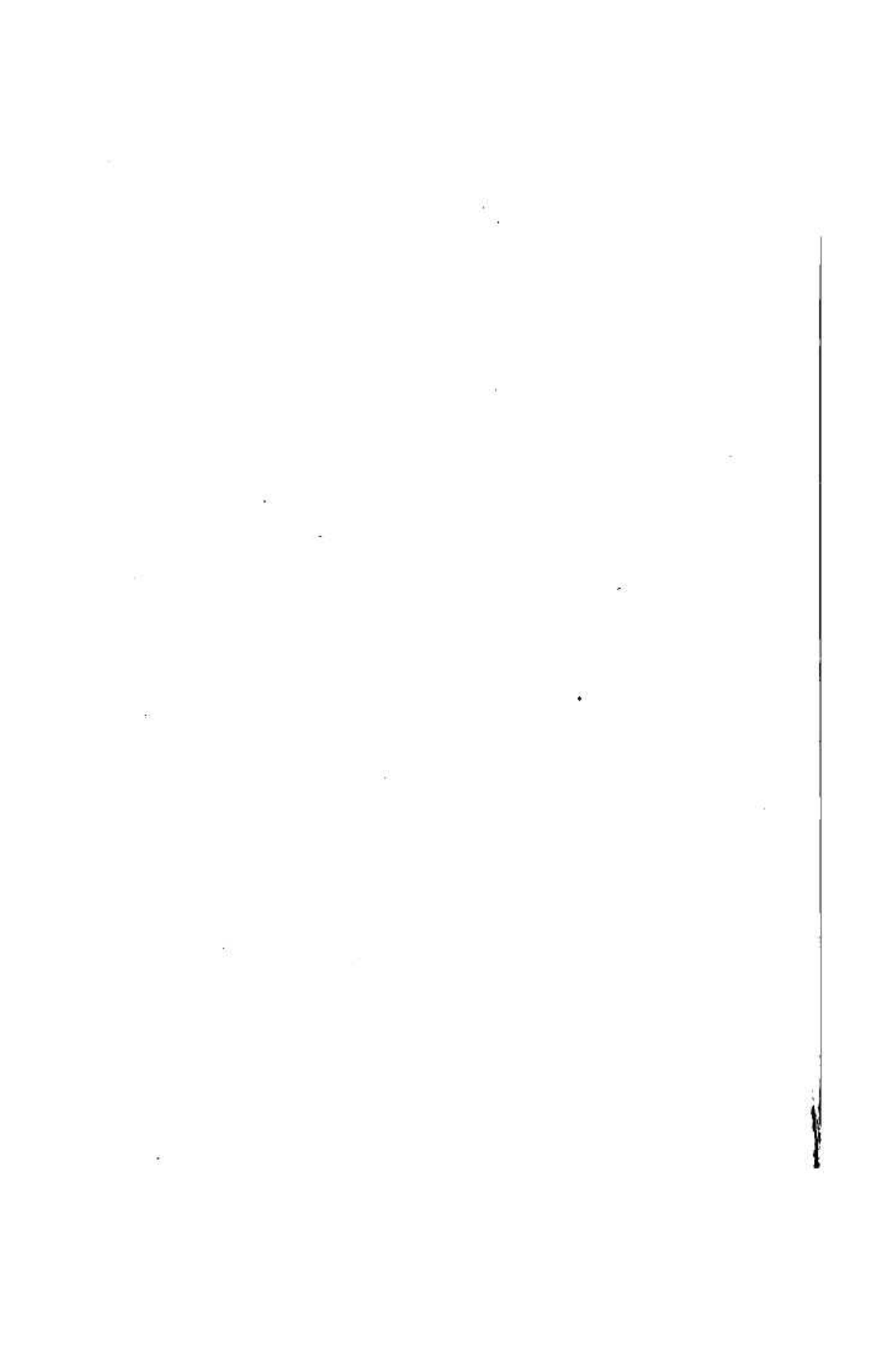
FROM THE ECCLESIASTICAL COURT,
CHESTER.

THE FIRST PORTION.

EDITED BY
THE REV. G. J. PICCOPE, M.A.,
CURATE OF BRINDLE.

PRINTED FOR THE CHETHAM SOCIETY.

M.DCCC.LVII.



INTRODUCTION.

THE Wills now submitted to the Members of the CHETHAM SOCIETY were transcribed by the late Rev. JOHN PICCOPE, M.A., Incumbent of Farndon, from the Archives in the Ecclesiastical Court of Chester. By the kind permission of the Rev. HENRY RAIKES, M.A., late Chancellor of the Diocese, he had access to the various documents in the Registry, a privilege of which his peculiar taste for such pursuits and his intimate acquaintance with the pedigrees of Lancashire and Cheshire families, induced him eagerly to avail himself. The entire collection, from which the present volume is taken, consists of nearly three hundred wills and inventories, embracing every class of society in the two counties palatine of Lancaster and Chester. They were originally selected with a view to their future publication by the Society, but a protracted illness unfortunately prevented my father's hopes being realised during his lifetime.

The wills are printed as nearly as possible in extenso, some technical forms and tedious repetitions being, however,

omitted; and, with very few exceptions, every legacy has been inserted. It has been thought desirable to retain the contractions and capricious manner of spelling, so as to give a faithful and literal copy of the original.

My warmest thanks are due to HENRY RAIKES, Esq., the Registrar of the Diocese, not only for permission to collate the MSS., but for previous examinations of the Records in his care. To the Rev. CANON RAINES of Milnrow I am under the deepest obligation for information at all times so liberally afforded, and for his valuable assistance and advice whilst the work was progressing through the press.

G. J. P.