

**PART I. REPORT FOR 1900 - 1901.
LABOR AND INDUSTRIAL
CHRONOLOGY OF THE
COMMONWEALTH OF
MASSACHUSETTS 1900**

Published @ 2017 Trieste Publishing Pty Ltd

ISBN 9780649623167

Part I. Report for 1900 - 1901. Labor and Industrial Chronology of the Commonwealth of Massachusetts 1900 by Horace G. Wadlin

Except for use in any review, the reproduction or utilisation of this work in whole or in part in any form by any electronic, mechanical or other means, now known or hereafter invented, including xerography, photocopying and recording, or in any information storage or retrieval system, is forbidden without the permission of the publisher, Trieste Publishing Pty Ltd, PO Box 1576 Collingwood, Victoria 3066 Australia.

All rights reserved.

Edited by Trieste Publishing Pty Ltd.
Cover @ 2017

This book is sold subject to the condition that it shall not, by way of trade or otherwise, be lent, re-sold, hired out, or otherwise circulated without the publisher's prior consent in any form or binding or cover other than that in which it is published and without a similar condition including this condition being imposed on the subsequent purchaser.

www.triestepublishing.com

HORACE G. WADLIN

**PART I. REPORT FOR 1900 - 1901.
LABOR AND INDUSTRIAL
CHRONOLOGY OF THE
COMMONWEALTH OF
MASSACHUSETTS 1900**

LABOR AND INDUSTRIAL CHRONOLOGY

OF THE

COMMONWEALTH OF MASSACHUSETTS

1900.

[FROM THE THIRTY-SECOND ANNUAL REPORT OF THE MASSACHUSETTS BUREAU OF STATISTICS OF LABOR, pp. 1-130,
AND THE FIFTEENTH ANNUAL REPORT ON THE
STATISTICS OF MANUFACTURES, pp. 1-60.]

UNIVERSITY
LIBRARY
PRINCETON, N. J.

HORACE G. WADLIN, *Chief.*

*With compliments of
Horace G. Wadlin,*

Chief of Bureau of Statistics of Labor.

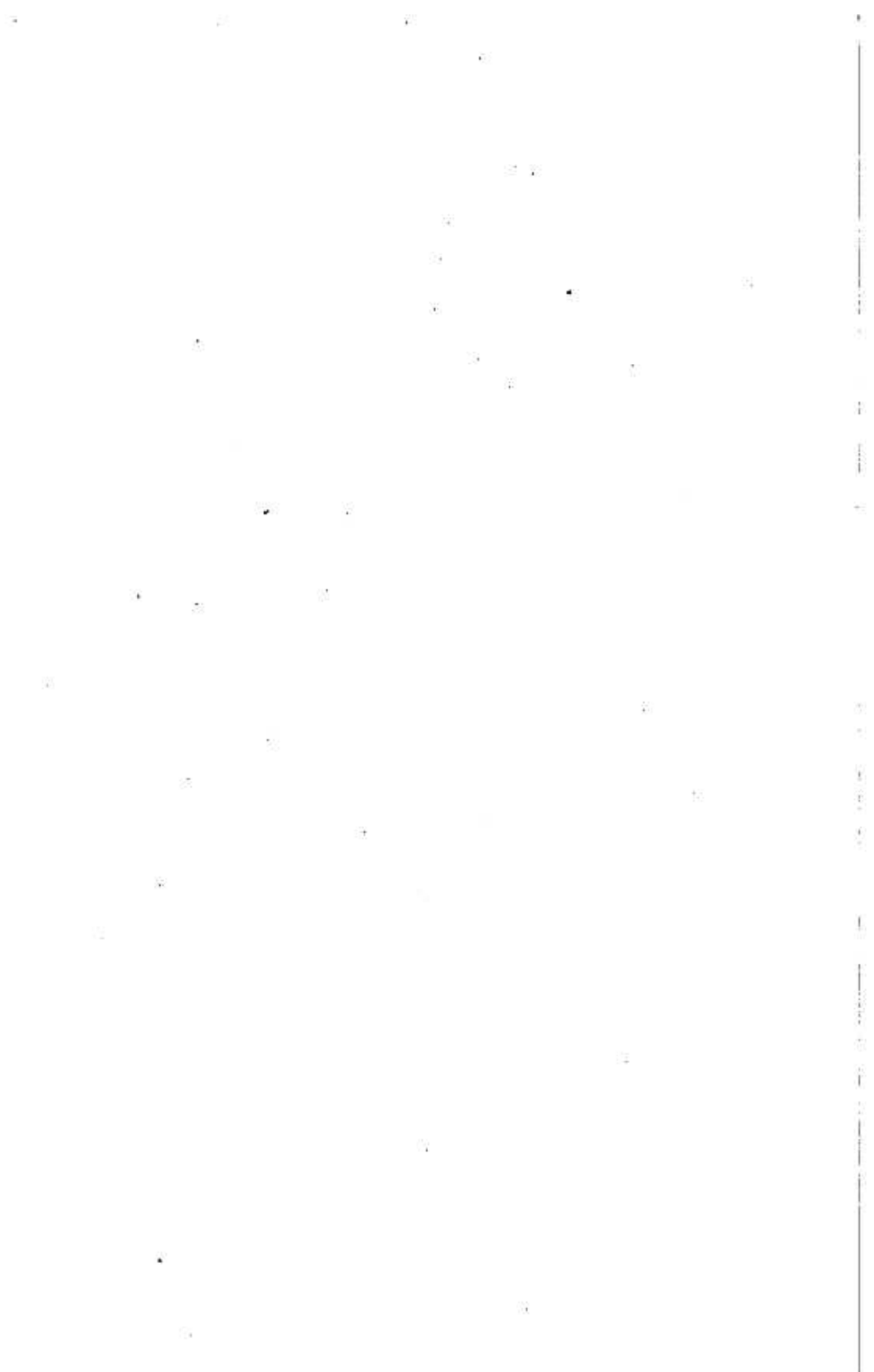
INTRODUCTORY NOTE.

This volume comprises the Labor Chronology and the Industrial Chronology for the year 1900, each having formed a part of the Report on the Statistics of Labor and on the Annual Statistics of Manufactures of the Commonwealth of Massachusetts, bound together under the provisions of Chapter 225 of the Acts of 1900.

(RECAP)

HD 8052
M 41A3
1900

DEC 15 1901 154702



PART I. REPORT FOR 1901.

LABOR CHRONOLOGY

OF THE

COMMONWEALTH OF MASSACHUSETTS.

1900.

HOURS OF LABOR.

WAGES.

TRADES UNIONS.

STRIKES AND LOOKOUTS.

SOCIAL AND INDUSTRIAL BENEFITS.

LABOR LEGISLATION — 1900.

[FROM THE THIRTY-SECOND ANNUAL REPORT OF THE
Pub. MASSACHUSETTS BUREAU OF STATISTICS
OF LABOR, pp. 1-130.]

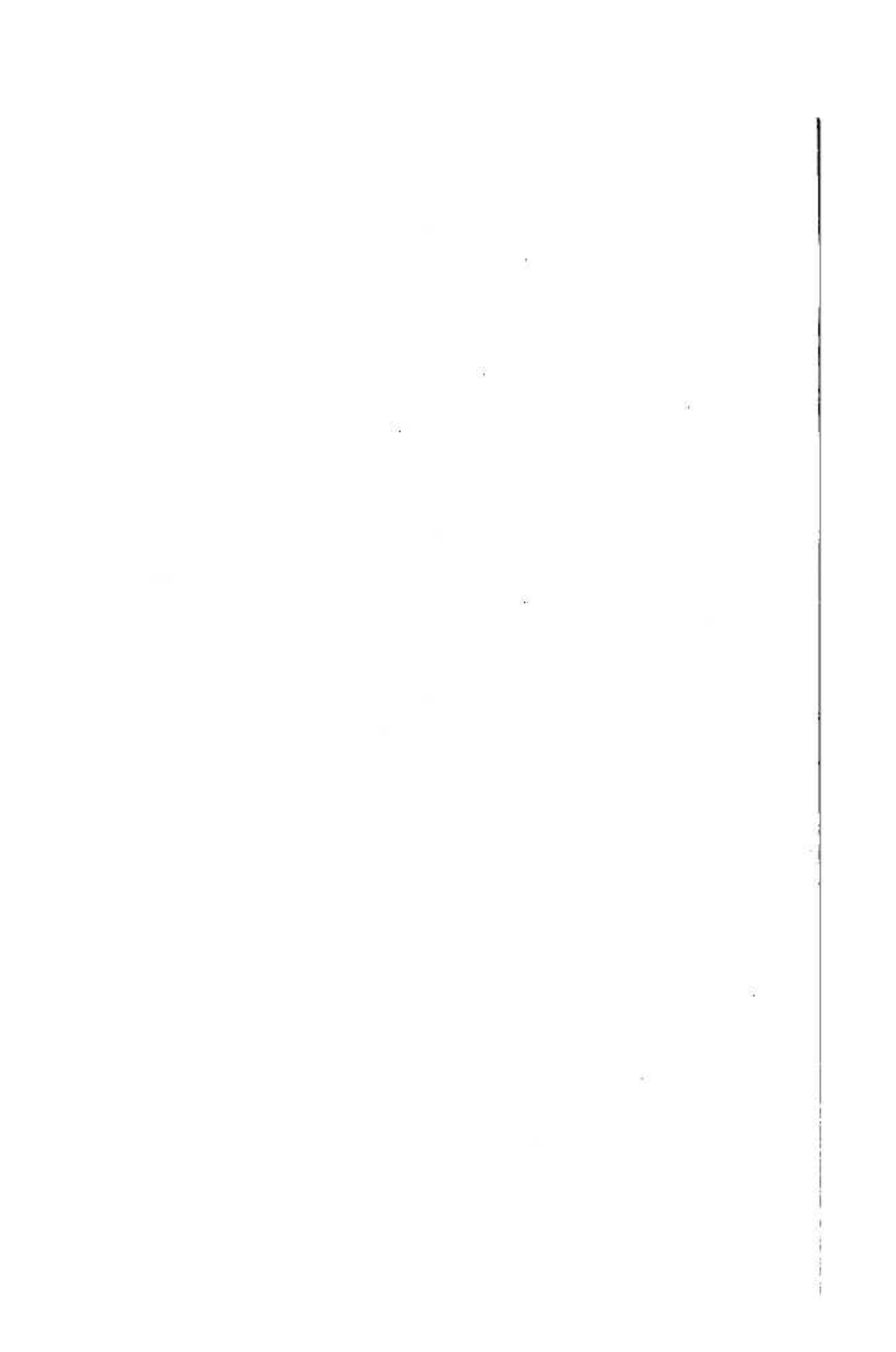
BY

HORACE G. WADLIN,

CHIEF OF THE BUREAU OF STATISTICS OF LABOR.

BOSTON:

WRIGHT & POTTER PRINTING CO., STATE PRINTERS,
18 POST OFFICE SQUARE.
1901.



CONTENTS.

LABOR CHRONOLOGY — 1900.

	Page	Page
EXPLANATORY NOTE,		1
HOURS OF LABOR.		
	Page	
Adams,	7	GLOUCESTER, 12
Agawam,	7	Great Barrington, 12
Amesbury,	7	Greenfield, 13
Andover,	7	Groveland, 13
Athol,	7	HAVERHILL, 13
Attleborough,	7	Hinsdale, 13
	7	Holliston, 13
BEVERLY,	7	HOLYOKE, 13
Billerica,	7	Hopedale, 13
Blackstone,	7	Hopkinton, 13
BOSTON,	7-9	
BROCKTON,	9	Ipswich, 13
Brookline,	9	
		Lancaster, 13
Charlemont,	9	LAWRENCE, 13, 14
Charlton,	9	Lee, 14
Chelmsford,	9	Leominster, 14
Chester,	9	Leverett, 14
CHICOPEE,	9	Littleton, 14
Clarksburg,	9	LOWELL, 14
Clinton,	9	LYNN, 14
		MALDEN, 14
Dalton,	9	MAMLBOROUGH, 14
Danvers,	9	Medway, 14
Dracut,	9	Methuen, 15
Dudley,	10	Middleborough, 15
		Milford, 15
Enfield,	10	Millbury, 15
Erving,	10	Monson, 15
		Montague, 15
FALL RIVER,	10-12	
Decision relative to the 58-		
hour law,	11, 12	NEW BEDFORD, 15
FITCHBURG,	12	Newbury, 15
Franklin,	12	NEWBURYPORT, 15

LABOR CHRONOLOGY — Continued.

HOURS OF LABOR — Concluded.

	Page		Page
NORTH ADAMS,	15	SPRINGFIELD,	17
North Andover,	15	Sterling,	17
North Attleborough,	15	Stoneham,	17
Northborough,	15	Swampscott,	17
North Brookfield,	15		
Northfield,	16	TACHTON,	17
Orange,	16	WALTHAM,	18
		Ware,	18
Peabody,	16	Warren,	18
Pepperell,	16	Webster,	18
PITTSFIELD,	16	Westfield,	18
Plymouth,	16	Westminster,	18
		West Springfield,	18
Rockland,	16	Weymouth,	18
Royalston,	16	Whitman,	18
		Williamsburg,	18
SALEM,	17	Williamstown,	18
Shelburne,	17	Winchendon,	18
Shirley,	17	Winchester,	18
Shrewsbury,	17	WORCESTER,	18
Southbridge,	17		
Spencer,	17	In general,	19
ANALYSIS,			19-22
Change in manner of presentation,			19
Classification of movements relating to hours of labor, by months,			19, 20
Tabular statement showing the number of movements, by cities and towns,			21
Tabular statement giving by months the number of cities and towns in which action was taken relative to hours of labor,			22
Geographical distribution of the cities and towns wherein action took place relative to hours of labor,			22

WAGES.

	Page		Page
Adams,	25	Dalton,	26
Andover,	25	Dracut,	26
		Dudley,	26
Billerica,	25	Easthampton,	26
Blackstone,	25		
BOSTON,	25, 26	FALL RIVER,	26, 27
BROCKTON,	26	FITCHBURG,	27
Brookfield,	26	Franklin,	27
		GLOUCESTER,	27
Clinton,	26	Great Barrington,	27