

**ADDRESSES DELIVERED BEFORE  
THE WORLD'S RAILWAY  
COMMERCE CONGRESS, HELD IN  
CHICAGO, ILL., JUNE 19-23, 1893**

Published @ 2017 Trieste Publishing Pty Ltd

ISBN 9780649177165

Addresses delivered before the World's Railway Commerce Congress, held in Chicago, Ill., June 19-23, 1893 by Various

Except for use in any review, the reproduction or utilisation of this work in whole or in part in any form by any electronic, mechanical or other means, now known or hereafter invented, including xerography, photocopying and recording, or in any information storage or retrieval system, is forbidden without the permission of the publisher, Trieste Publishing Pty Ltd, PO Box 1576 Collingwood, Victoria 3066 Australia.

All rights reserved.

Edited by Trieste Publishing Pty Ltd.  
Cover @ 2017

This book is sold subject to the condition that it shall not, by way of trade or otherwise, be lent, re-sold, hired out, or otherwise circulated without the publisher's prior consent in any form or binding or cover other than that in which it is published and without a similar condition including this condition being imposed on the subsequent purchaser.

[www.triestepublishing.com](http://www.triestepublishing.com)

**VARIOUS**

**ADDRESSES DELIVERED BEFORE  
THE WORLD'S RAILWAY  
COMMERCE CONGRESS, HELD IN  
CHICAGO, ILL., JUNE 19-23, 1893**



# ADDRESSES

DELIVERED BEFORE

## THE WORLD'S RAILWAY COMMERCE CONGRESS,

HELD IN CHICAGO, ILL., JUNE 19-23, 1893.

UNDER THE AUSPICES OF THE  
WORLD'S COLUMBIAN AUXILIARY OF THE WORLD'S  
COLUMBIAN EXPOSITION.

---

*OFFICIAL REPORT.*

---



CHICAGO:  
THE RAILWAY AGE AND NORTHWESTERN RAILROADER,  
1893.

H-12-2  
.877

59033



## WORLD'S RAILWAY COMMERCE CONGRESS.

### TABLE OF CONTENTS.

	PAGE
INTRODUCTION: Call for the Railway Congress, . . . . .	1
OPENING ADDRESS of Hon. Charles C. Bonney, Prest. World's Congress Auxiliary, . . . . .	5
PRELIMINARY ADDRESS by Mr. George R. Blanchard, Chairman World's Railway Commerce Congress, . . . . .	7
THE SCOPE OF THE WORLD'S RAILWAY COMMERCE CONGRESS, by Chair- man George R. Blanchard, Commissioner Central Traffic Association, . . . . .	15

### ADDRESSES UPON ASSIGNED TOPICS.

#### RAILWAY LAW AND LEGISLATION.

CONSTITUTIONAL GUARANTEES OF RAILWAY PROPERTIES AND FRAN- CHISES AGAINST LEGISLATIVE SPOILIATION—Hon. John F. Dillon, General Counsel Union Pacific Railway, . . . . .	10
THE PROPER PROTECTION OF THE PUBLIC RIGHTS AND INTERESTS INVOLVED IN RAILWAY COMMERCE—Hon. W. G. Veazey, member Interstate Commerce Commission, . . . . .	20
THE PROTECTION OF PRIVATE RIGHTS INVOLVED IN RAILWAY COM- MERCE—Edward P. Ripley, Vice-President Chicago, Milwaukee & St. Paul Railway Co., . . . . .	42
PRINCIPLES OF RAILWAY LEGISLATION—Hon. Martin A. Knapp, member Interstate Commerce Commission, . . . . .	49
GOVERNMENTAL REGULATION OF TRANSPORTATION AND ITS PRACTICAL EFFECT—Hon. John W. Cary, General Counsel Chicago, Milwaukee & St. Paul Railway Co., . . . . .	59
THE STATUTORY REGULATION OF TRANSPORTATION AND ITS RESULTS— Alfred G. Safford, Law Department Interstate Commerce Commis- sion, . . . . .	70
ECONOMIC LAWS GOVERNING RAILWAY OPERATIONS—M. M. Kirkman, and Vice-President Chicago & North-Western Railway, . . . . .	76

## RAILWAY MANAGEMENT AND OPERATION.

THE EFFECT OF COMPETITION UPON RAILWAY CONSTRUCTION AND OPERATION—Aldace F. Walker, Chairman Joint Committee Trunk Lines and Central Traffic Association, . . . . .	83
RAILWAY STRIKES; WHAT SHOULD BE DONE IN THE WAY OF PREVENTION AND CONTROL—E. W. Meddaugh, General Solicitor Chicago & Grand Trunk Railway Co., . . . . .	97
RAILWAY ACCIDENTS; THEIR CAUSES AND THE PRACTICAL SAFEGUARDS AGAINST THEM—H. S. Haines, Vice-President Plant Railway System, . . . . .	109
INTERNATIONAL AND INTERSTATE RAILWAY ARRANGEMENTS—George R. Blanchard, Commissioner Central Traffic Association, . . . . .	126
THE AMERICAN INTER-CONTINENTAL RAILWAY—William E. Curtis, Representative United States Department of State, World's Columbian Exposition, . . . . .	137
BAGGAGE: CHECKING SYSTEMS AND DELIVERY, CLAIMS FOR DAMAGES, LIMITATIONS OF LIABILITY, RESTRICTIONS OF QUANTITY, ETC.—Marshall M. Kirkman, 2nd Vice-President Chicago & North-Western Railway Co., . . . . .	144
PASSENGER TICKETS; DEFECTS OF EXISTING SYSTEMS, ETC.—George H. Heafford, General Passenger and Ticket Agent Chicago, Milwaukee & St. Paul Railway, . . . . .	150
POLICE POWERS OF RAILWAY TRAIN OFFICIALS, ETC.—R. C. Richards, General Claim Agent Chicago & North-Western Railway, . . . . .	155
SAFETY DEVICES APPLIED TO RAILWAY CARS—Gen. Horace Porter, Vice-President Pullman's Palace Car Co., . . . . .	162
RAILWAY SAFETY APPLIANCES IN THE UNITED STATES—A. W. Soper, New York, . . . . .	167

## RAILWAY EMPLOYÉS.

SUPERANNUATION OF RAILWAY EMPLOYÉS—L. J. Seargeant, General Manager Grand Trunk Railway of Canada, . . . . .	173
APPLIANCES FOR THE SAFETY OF RAILWAY EMPLOYÉS—L. S. Coffin, Ft. Dodge, Ia., . . . . .	193
RAILWAY EMPLOYÉS; WHAT SHALL BE DONE FOR THEIR PROTECTION AND IMPROVEMENT—Kirtland H. Wade, General Manager California Southern Railway, . . . . .	203
PROTECTION AND IMPROVEMENT OF RAILWAY EMPLOYÉS—S. R. Barr, Superintendent Relief Department Baltimore & Ohio Railroad, . . . . .	206
RELIEF OF RAILWAY EMPLOYÉS—R. F. Smith, Superintendent Voluntary Relief Department Pennsylvania Lines West of Pittsburgh, . . . . .	215

## RAILWAY HISTORY AND DEVELOPMENT.

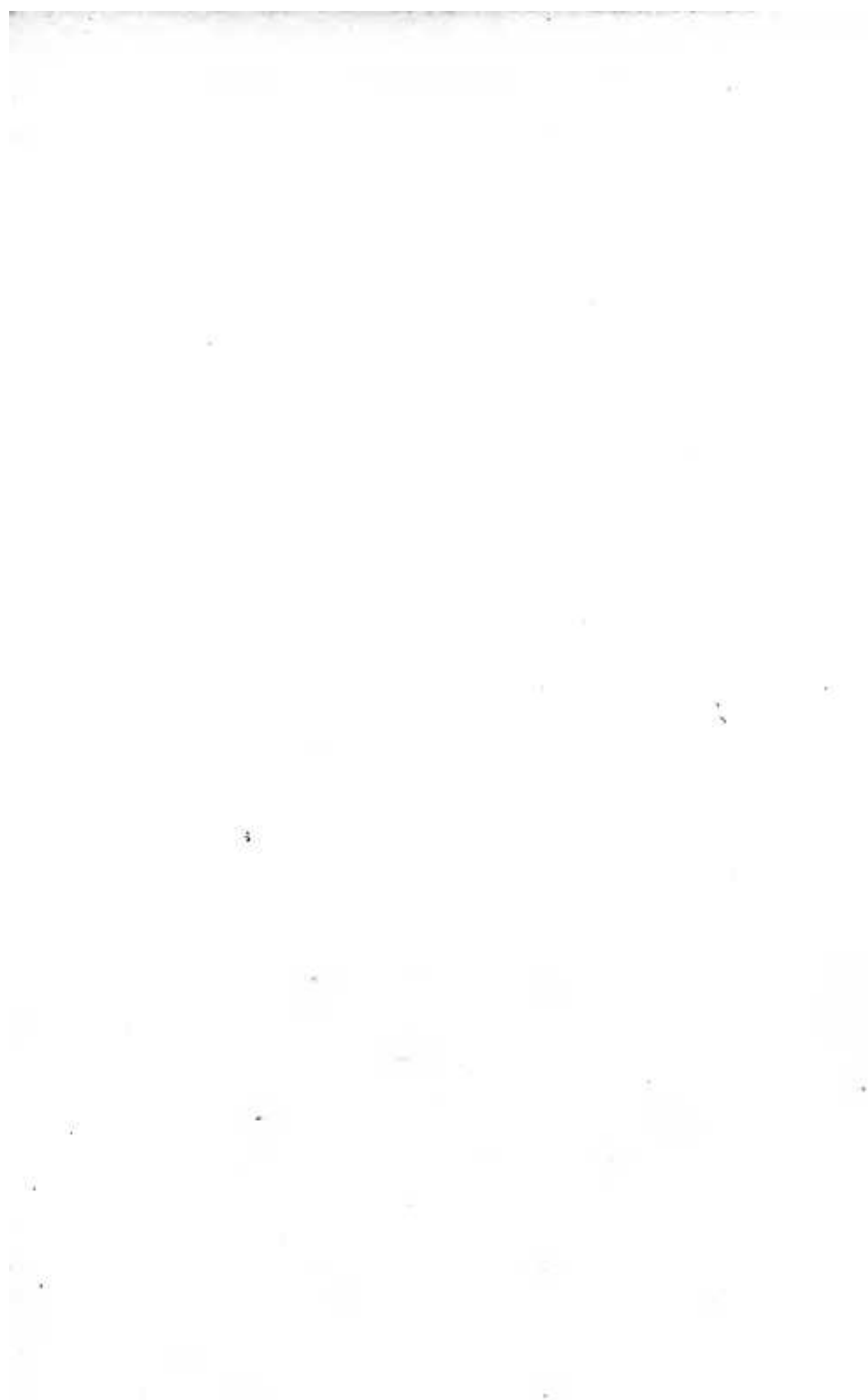
THE EVOLUTION OF THE AMERICAN RAILWAY SYSTEM—Jos. Nimmo, Jr., late Statistician U. S. Treasury Department, . . . . .	223
--	-----



TABLE OF CONTENTS.

v

THE INFLUENCE OF RAILWAYS ON THE SETTLEMENT AND DEVELOPMENT OF NEW COUNTRIES—George P. Neale, Superintendent of the Line, London & North-Western Railway, London, England, - -	242
RAILWAYS OF FOREIGN COUNTRIES—Papers by representatives of foreign nations having delegations at the World's Fair:	
<i>Spain</i> —John Morrison, General Manager Bobadilla a Algeciras Railway, - - - - -	246
<i>Italy</i> —Count R. Piola-Caselli, General Secretary of the Italian Commission, - - - - -	249
<i>Sweden</i> —From the Traffic Manager of the Royal State Railway. Read by Mr. Axel Welin, Secretary Royal Swedish Commission, -	251
<i>New South Wales</i> —Hon. Arthur Renwick, M.D., Executive Commissioner to the World's Columbian Exposition, - - - -	255





# WORLD'S RAILWAY COMMERCE CONGRESS.

## INTRODUCTORY.

The World's Railway Commerce Congress, which was held in the Art Institute building, in Chicago, during five days of the week commencing Monday, July 19, 1893, was one of the series of remarkable gatherings of thoughtful men, under the auspices of the World's Congress Auxiliary, that formed the distinctively intellectual features of the World's Columbian Exposition. Early in 1892 the originator and president of the World's Congress Auxiliary, Hon. C. C. Bonney, a distinguished member of the Chicago bar, a man fitted by great ability and learning for this special work, and inspired by philanthropic zeal for the enlargement of human knowledge and the good of mankind, laid out his programme of congresses covering all branches of intellectual activity, and selected the committees to organize the different departments. The committee appointed under the general department of "Commerce and Finance," to plan and call a "World's Railway Commerce Congress," subsequently issued the following preliminary circular:

### A RAILWAY COMMERCE CONGRESS.—PRELIMINARY ADDRESS.

"NOT THINGS, BUT MEN."

THE WORLD'S CONGRESS AUXILIARY OF THE WORLD'S COLUMBIAN EXPOSITION OF 1893.

President, Charles C. Bonney;

Vice-President, Thomas B. Bryan;

Treasurer, Lyman J. Gage;

Secretary, Benjamin Butterworth.

DEPARTMENT OF COMMERCE AND FINANCE.

GENERAL DIVISION OF RAILWAY COMMERCE.

Among the international congresses to be held at Chicago during the six-months season of the World's Columbian Exposition of 1893, is one on the subject of railway commerce. It is proposed to convene on