

**"ALIS VOLAT PROPRIIS": FIFTEENTH
BIENNIAL REPORT OF THE BOARD OF
HORTICULTURE TO
THE THIRTIETH LEGISLATIVE ASSEMBLY,
REGULAR SESSION OF THE STATE OF
OREGON, 1919**

Published @ 2017 Trieste Publishing Pty Ltd

ISBN 9780649498154

"Alis Volat Propriis": Fifteenth Biennial Report of the Board of Horticulture to the Thirtieth Legislative Assembly, Regular Session of the State of Oregon, 1919 by Various

Except for use in any review, the reproduction or utilisation of this work in whole or in part in any form by any electronic, mechanical or other means, now known or hereafter invented, including xerography, photocopying and recording, or in any information storage or retrieval system, is forbidden without the permission of the publisher, Trieste Publishing Pty Ltd, PO Box 1576 Collingwood, Victoria 3066 Australia.

All rights reserved.

Edited by Trieste Publishing Pty Ltd.
Cover @ 2017

This book is sold subject to the condition that it shall not, by way of trade or otherwise, be lent, re-sold, hired out, or otherwise circulated without the publisher's prior consent in any form or binding or cover other than that in which it is published and without a similar condition including this condition being imposed on the subsequent purchaser.

www.triestepublishing.com

VARIOUS

**"ALIS VOLAT PROPRIIS": FIFTEENTH
BIENNIAL REPORT OF THE BOARD OF
HORTICULTURE TO
THE THIRTIETH LEGISLATIVE ASSEMBLY,
REGULAR SESSION OF THE
STATE OF OREGON, 1919**

"ALIS VOLAT PROPRIIS"

FIFTEENTH BIENNIAL REPORT

OF THE

Oregon BOARD OF HORTICULTURE

TO THE

THIRTIETH LEGISLATIVE ASSEMBLY

REGULAR SESSION

OF THE

STATE OF OREGON

1919



SALEM, OREGON:
STATE PRINTING DEPARTMENT
1919

20

20

20

20

20

20

20

20

20

20

20

20

20

20

20

20

20

20

20

Case 2.
University of Oregon
1/24/33

MEMBERS OF STATE BOARD OF HORTICULTURE

	First District	
H. C. Atwell	- - - - -	Forest Grove
	Second District	
Chas. A. Park	- - - - -	Salem
	Third District	
Albert C. Allen	- - - - -	Medford
	Fourth District	
C. A. Macrum	- - - - -	Mosier
	Fifth District	
H. H. Weatherspoon	- - - - -	Elgin

OFFICERS OF THE BOARD

Chas. A. Park	- - - - -	President
Henry E. Dosch	- - - - -	Secretary
J. E. Stansbery	- - - - -	State Inspector

OFFICE OF BOARD: PORTLAND, OREGON

DISTRICT BOUNDARIES

First District

Multnomah, Clackamas, Yamhill, Washington, Columbia, Clatsop and Tillamook Counties

Second District

Lincoln, Marion, Polk, Benton, Linn and Lane Counties

Third District

Douglas, Jackson, Klamath, Josephine, Coos, Curry and Lake Counties

Fourth District

Morrow, Wasco, Gilliam, Hood River, Crook, Sherman, Wheeler, Jefferson and Deschutes Counties

Fifth District

Umatilla, Union, Baker, Wallowa, Malheur, Grant and Harney Counties

COUNTY INSPECTORS

Baker County, F. M. Dimon.
Benton County, vacant.
Clackamas County, O. E. Freytag, Oregon City.
Clatsop County, Chas. S. Dow, Astoria.
Columbia County, A. L. Morris, Warren.
Coos County, vacant.
Curry County, vacant.
Douglas County, Earl Percy, Roseburg.
Gilliam County, T. C. Mobley, Olex.
Grant County, vacant.
Harney County, vacant.
Hood River County, F. W. Angus, Frank Stanton, Hood River.
Jackson County, C. A. Noren, Claude C. Cate, E. R. Oatman, H. T. Panky, T. F. Williamson, Medford.
Josephine County, C. D. Thompson, Grants Pass.
Klamath County, W. S. Taylor, Klamath Falls.
Lake County, vacant; O. B. Hardy, deputy commissioner.
Lane County, C. E. Stewart, Cottage Grove.
Lincoln County, S. G. Irwin, Newport.
Linn County, D. W. Rumbaugh, W. A. Bodine, Albany.
Malheur County, A. Gramse, Ontario.
Marion County, S. W. Van Trump, Salem.
Morrow County, W. E. Wallbridge, Heppner.
Multnomah County, Charles W. Walker, 152 Courthouse, Portland.
Polk County, J. S. Parker, Dallas.
Sherman County, vacant.
Tillamook County, Ray C. Jones, Tillamook.
Umatilla County, W. P. Hopson, Milton.
Union County, A. C. Filman, Union.
Wallowa County, H. V. Meade, Orenco.
Washington County, A. V. Denny, Beaverton.
Wasco County, J. P. Carroll, Mosier.
Wheeler County, vacant.
Yamhill County, vacant.

BIENNIAL REPORTS OF COMMISSIONERS

Report of Chas. A. Park, President and Commissioner for the Second District.

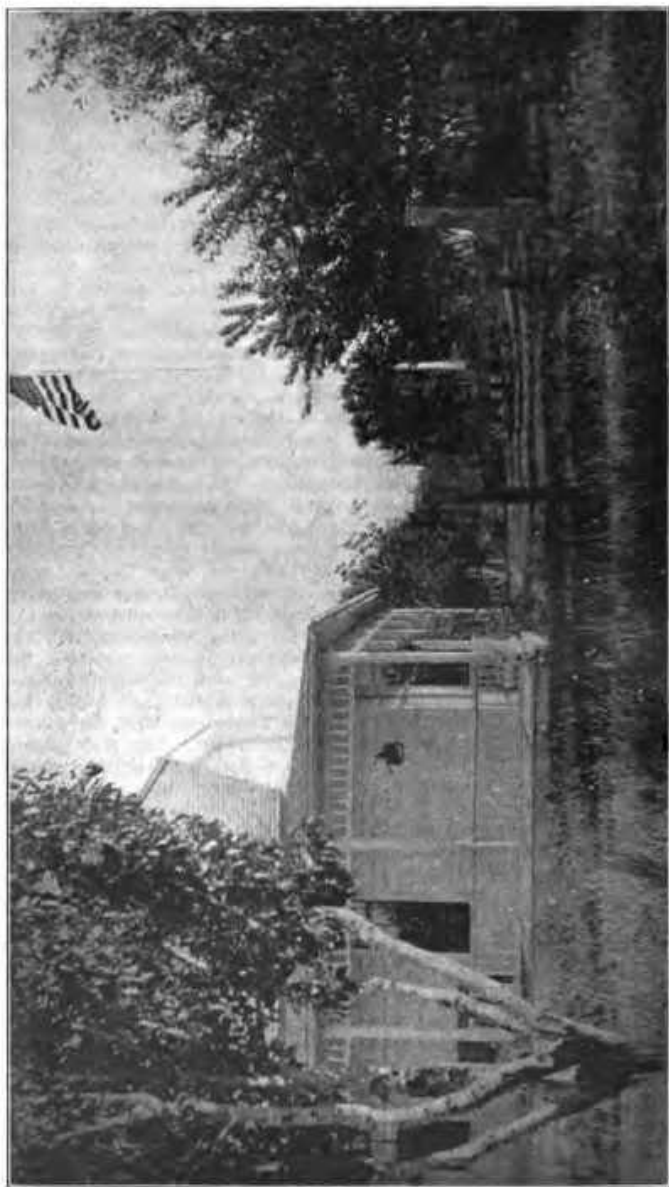
To the Honorable State Board of Horticulture:

I herewith submit my report for the term ending December, 1918, as Commissioner of the Second Horticultural District of the State of Oregon, which district comprises the counties of Lane, Linn, Marion, Lincoln, Benton and Polk. The fruit raising section of the district lies mostly in the Willamette Valley, although excellent fruit of some varieties is grown in the valleys of the coast counties.

The horticultural people have reason to be greatly encouraged by the conditions during the past year. The producers of small fruits, such as gooseberries, strawberries, currants, raspberries and loganberries have received very remunerative prices for everything that they raised, the local canneries and fruit juice factories taking everything. The cherry crop was a very fair crop, of excellent quality and price higher than at any time in the history of this valley. The pear crop was good, of most excellent quality, free from scab. The price ranged as high as \$50.00 per ton for Bartlett's at the canneries. The fall pears were shipped to eastern markets, netting a price better than ever received before. The apple crop was not large and was more wormy than usual. The prune crop was more than 100 per cent, Oregon producing at least 50,000,000 pounds of dried prunes. The Government set the price on dried prunes and also commandeered the whole crop, so that the winter was practically over before any prunes were released for the open market. The fruit juice business has been greatly stimulated by the plants located in Salem. They have enlarged their ability for greater output and are carrying on a very active campaign for stimulating the consumption of fruit juice by the public. The fruit plants have also added the manufacture of jams and jellies to their activities. All of the canneries, evaporators and fruit juice factories have put up everything that they can buy in the way of fruit products during the past year. The Wittenburg King evaporators operated largely on vegetables and had large contracts with the Government to furnish them the dried products. I do not have the data showing what has been paid out during the past season for fruit products in the State, but I have an estimate that in Marion County there was paid out \$2,275,000.

The pests and fungous diseases that attack the fruit plants and trees have not been as injurious during the past season, save the exception of the codling moth. The increased activity of the codling moth was probably due to the excessive hot weather we had during the summer. Fire blight in the Willamette Valley has not been on the increase. It has been held well in check. The inspectors in the various counties have been diligent during the active period of the fire blight, cutting out and destroying limbs they found affected with it. The methods that we have used in combatting the fire blight in the Willamette Valley have proved effective.

The war has made a difficult condition in the way of labor during the past year. It has been difficult for the fruit grower to get efficient



THE WALLACE PEAR ORCHARDS, NEAR SALEM

help to properly take care of his crops. The price of farm labor has increased materially and it has been a question whether the farmer would be able to make this increase and continue with his work, or whether he would have to cut down his work to just what he could do himself, taking what he needed for himself first, and disposing of what surplus he may have to those who do not produce.

As President of the Oregon State Board of Horticulture and Quarantine Officer, I wish to state that the conditions concerning the shipment of potatoes from California into Oregon have not been very satisfactory. We have been as courteous as we could be in allowing potatoes that had been thoroughly inspected to come into the State. But we find that the matter of inspection is very difficult and we have almost been driven to the point of putting on an absolute quarantine against the shipment of potatoes into the State from districts infested with the tuber moth. Last winter, I had a conference with the Horticultural Commissioner of California concerning the condition of the shipment of potatoes from California into Oregon, and he suggested that we have a conference with potato growers, so that they might see the danger they were in in having their market curtailed, and had put on foot a conference of horticultural men from all the western states to be held at Riverside, California, in November. On account of the influenza, this meeting has been postponed until next May, at which time they wish to take up the quarantine of all matters pertaining to horticulture, so that there may be some uniform rules adopted by all of the states.

The Horticultural Board of the State will do its utmost to keep from this State the tuber moth, which would be a great menace to the potato crop. All of the horticultural inspectors have been instructed to use the utmost diligence in inspection of all potatoes coming from California.

A few years ago, the alfalfa weevil was confined to Utah and the southeastern corner of Idaho. Its advance is slow, but sure. A small area in the western part of Idaho along the river out of Payette has become infested with the alfalfa weevil and this section is contiguous to an alfalfa producing valley running down from Ontario toward Burns, and we ought to use the greatest possible care to prevent the introduction of the alfalfa weevil into Oregon.

There have been no new quarantines issued since our last report, but all the quarantines in force will be published in our forthcoming report.

CHAS. A. PARK,

Horticultural Commissioner Second District.

Salem, Oregon, December 31, 1918.

Report of C. C. Atwell, Commissioner First District

To the Honorable State Board of Horticulture:

Owing to the comparatively recent date of my appointment to this board, and the depleted condition of its fund, I am unable to make an extensive report.

My official activities have been limited to imperative calls. Several inspectors have been appointed in counties whose inspector had resigned, owing to the inadequate compensation allowed by law.