

**KENTUCKY GEOLOGICAL.
BULLETIN NO.
1. THE OIL AND GAS
SANDS OF KENTUCKY**

Published @ 2017 Trieste Publishing Pty Ltd

ISBN 9780649406036

Kentucky Geological. Bulletin No. 1. The Oil and Gas Sands of Kentucky by J. B. Hoeing

Except for use in any review, the reproduction or utilisation of this work in whole or in part in any form by any electronic, mechanical or other means, now known or hereafter invented, including xerography, photocopying and recording, or in any information storage or retrieval system, is forbidden without the permission of the publisher, Trieste Publishing Pty Ltd, PO Box 1576 Collingwood, Victoria 3066 Australia.

All rights reserved.

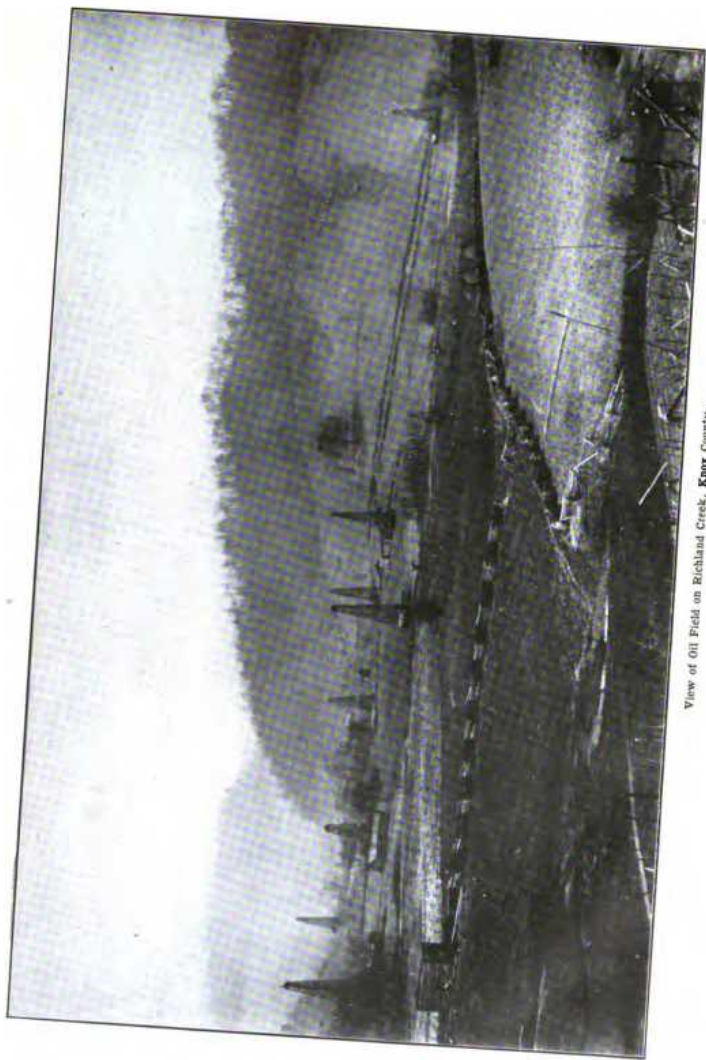
Edited by Trieste Publishing Pty Ltd.
Cover @ 2017

This book is sold subject to the condition that it shall not, by way of trade or otherwise, be lent, re-sold, hired out, or otherwise circulated without the publisher's prior consent in any form or binding or cover other than that in which it is published and without a similar condition including this condition being imposed on the subsequent purchaser.

www.triestepublishing.com

J. B. HOEING

**KENTUCKY GEOLOGICAL.
BULLETIN NO.
1. THE OIL AND GAS
SANDS OF KENTUCKY**



View of Oil Field on Richland Creek, Knox County.

GEOLOGICAL SURVEY OF KENTUCKY. 1907-1918.

CHARLES J. NORWOOD, DIRECTOR.

BULLETIN NO. I.

PRELIMINARY PART.

THE
OIL AND GAS SANDS OF KENTUCKY,

BY

J. B. HOEING, C. E.

OFFICE OF THE SURVEY: LEXINGTON.

1904.

PRINTED BY THE GEO. G. FETTER COMPANY, LOUISVILLE
1908

TABLE OF CONTENTS.

	PAGE
Letter of Transmittal.....	1
Introductory Letter	5
Chapter I. Preliminary discussion.....	7 to 15
Ohio Series and Principal Sands, 9; West Virginia Series and Principal Sands, 10; Pennsylvania Series and Principal Sands, 11; Kentucky Series and Principal Sands, 12; Kentucky Gas and Oil Sands, 13.	
Chapter II. General Geology of Oil and Gas.....	16 to 24
Geological conditions necessary for the accumulation of oil and gas, 17; Reservoir, 17; Cover, 18; Structure, 19; Salt Water, 22; Strike Lines, 22; Rock Pressure, 23; Oil Pools and Limit of Supply, 24.	
Chapter III. Principal Divisions of the Geological Scale in Kentucky and the Oil Sands corresponding to each.....	25 to 44
Conglomerate Measures, 25; Chester (Mauch Chunk) Group, 27; St. Louis Limestone Group, 28; Waverly Group, 31; Devonian Black Shale, 33; Devonian (Corniferous) Limestone, 34; Niagara, 37; Clinton Group, 38; Hudson Group, 39; Trenton Group (Trenton, Birdseye, Chazy, Knox Dolomite), 40; Calciferous, 44.	
Chapter IV. The Oil Sands Corresponding to the Different Formations	45 to 58
The Conglomerate Series, Beaver, Horton, Pike and Salt Sands; Wages, Jones and Epperson Sands, 46; The Waverly Group, 47; The Big Injun Group, 47; Cloverport Gas Sand, 48; Berea Grit, 48; Devonian, 50; Black Shale, 50; Ragland Sand, 51; Bath County Field, 51; Estill County Field, 53; Clinton, 55; Hudson Group, 55; Caney Sand, 55; Wayne County Sands, 56; Trenton, 58; Cumberland River Sands, 58; Calciferous, 58; White Oak Gas Sand, 58.	
Chapter V. Well Records.....	59 to 142
Bath County, 59; Rowan County, 62; Menefee County, 62; Montgomery County, 65; Clark County, 66; Powell County, 66; Estill County, 69; Breathitt County, 71; Wolfe County, 71; Magoffin County, 72; Morgan County, 73; Carter County, 74; Cincinnati, 74; Portsmouth, 75; Ironton, 75; Boyd County, 76; Lawrence County, 77; Johnson County, 79; Martin County, 80; Floyd County, 84; Pike County, 94; Knott County, 97; Knox County, 102; Rockcastle County, 106; Pulaski County,	

TABLE OF CONTENTS.

	PAGE
106; Whitley County, 107; Wayne County, 110; Clinton County, 114; Cumberland County, 114; Russell County, 124; Barren County, 126; Warren County, 131; Logan County, 134; Hart County, 134; Breckenridge County, 136; Tell City, 138; Caldwell County, 139; Carroll County, 139; Oldham County, 140; Harrison County, 140; Webster County, 140; Central City, 142.	
Chapter VI. Additional Well Records.....	143 to 203
Bath County, 143; Menefee County, 151; Powell County, 156; Estill County, 158; Morgan County, 159; Carter County, 159; Floyd County, 161; Pike County, 180; Knox County, 182; Whitley County, 202.	
Chapter VII. Production of Oil and Gas.....	204
Production of Oil, 204; Production of Gas, 205.	
Chapter VIII. Transportation of Oil and Gas.....	206
Transportation of Oil, 206; Transportation of Gas, 207.	
Chapter IX. Maps.....	208
Appendix. Elevations Above Sea of Points in Kentucky.....	209

MAPS.

- No. 1. Map of Kentucky showing Producing Oil and Gas Fields, Pipe Lines and Outlines of Eastern and Western Coal Fields.
- No. 2. Map of Kentucky showing outcrops of and areas underlaid by the Berea Grit and the Big Injun Sands and the area where the Trenton Rocks are at the surface.
- No. 3. Map of Kentucky showing outcrop and extent of the Corniferous Limestone.

PLATES.

- No. 1. Oil Field on Big Richland Creek, Knox County..... Frontispiece
- No. 2. Arch of Rough Creek Anticline, Grayson County..... Faces page 28
- No. 3. Devonian Shale, Corniferous Limestone and Niagara Shale
- No. 4. Clinton, near Indian Fields, Clark County..... " " 34
- No. 5. Big Injun Sand in Rockcastle County..... " " 46
- No. 6. Principal Ledge in Big Injun, Rockcastle County..... " " 48
- No. 7. Berea in Quarry near Farmer's, Rowan County..... " " 50
- No. 8. Standard Rig. Well at Campton, Wolfe County..... " " 70
- No. 9. Transporting Oil in Barges down the Cumberland River
- No. 10. Train of Tank Cars loaded with Ragland Oil at Salt Lick, Bath County..... " " 207

Letter of Transmittal.

To His Excellency, J. C. W. BECKHAM,
Governor of Kentucky.

Sir: I have the honor to submit herewith a preliminary report on the Oil and Gas Sands of Kentucky, by Mr. J. B. Hoeing, assistant geologist.

As indicated in the title, the report is a preliminary part of Bulletin No. 1, the Act governing the Survey providing that "in cases of urgency the Director may issue preliminary parts of a bulletin, covering the special work so far as it has progressed, in advance of the completion of the entire bulletin." The insistent calls for authentic information concerning our stores of petroleum and gas, and the pressing need of a more intelligent system upon which to base development, which is so keenly felt by those who are engaged in prospecting the State, certainly present a case of "urgency," and I therefore respectfully ask that the report be published as expeditiously as possible.

It will be observed that in this report Mr. Hoeing has provisionally retained the nomenclature of the late William M. Linney, a former assistant geologist on the Kentucky Survey, for certain geologic formations, such as Hudson, Waverly, etc., which must now be discarded. The "Hudson" of Linney, for example, must be replaced by "Cincinnati," with certain of its various subdivisions. The names used by Linney have been provisionally retained here not only because those terms are somewhat familiar to oil well drillers in the State, but because the Survey is not yet ready to present the revised nomenclature upon which work is now in progress. In the final bulletin the revised nomenclature will be used, correlated with the Linney names.

Comparatively little concerning the oil possibilities of that part of the State west of the Louisville and Nashville division of the Louisville & Nashville Railroad is given in this report. This is due to the fact that comparatively little has been done in the way of prospecting that part of the State, and I have deemed it highly important that publication of results obtained in the study of those regions which are now of especial interest to investors shall not be delayed until the study of the western districts can be completed. Work in the western districts has been taken up, and it is believed that the Survey will be able to render valuable service in directing prospecting there. Hitherto, prospectors for oil in the western counties have, as a rule, been content to stop at the Devonian Black Shale; but, as appears in this report, that formation is of less importance as an oil horizon than any other one we have.

Very respectfully,

CHARLES J. NORWOOD,
State Geologist.

Lexington, Ky., October 1, 1904.

INTRODUCTORY LETTER.

Professor CHARLES J. NORWOOD,

Director, Kentucky Geological Survey.

Dear Sir: I have the honor to submit herewith a preliminary report on the Oil and Gas Sands of Kentucky.

Acknowledgments are due the many operators and drillers in the State who have kindly placed the records of their work at the disposal of the Survey, thereby rendering this report much more complete than otherwise would have been possible.

Respectfully,

J. B. HOEING,

Assistant Geologist.

Lexington, Ky., October, 1904.