

**QUAIN'S ELEMENTS OF
ANATOMY. IN
THREE VOLUMES.
VOLUME I - PART I**

Published @ 2017 Trieste Publishing Pty Ltd

ISBN 9780649685035

Quain's Elements of Anatomy. In Three Volumes. Volume I - Part I by Edward Albert Schäfer & George Dancer Thane

Except for use in any review, the reproduction or utilisation of this work in whole or in part in any form by any electronic, mechanical or other means, now known or hereafter invented, including xerography, photocopying and recording, or in any information storage or retrieval system, is forbidden without the permission of the publisher, Trieste Publishing Pty Ltd, PO Box 1576 Collingwood, Victoria 3066 Australia.

All rights reserved.

Edited by Trieste Publishing Pty Ltd.
Cover @ 2017

This book is sold subject to the condition that it shall not, by way of trade or otherwise, be lent, re-sold, hired out, or otherwise circulated without the publisher's prior consent in any form or binding or cover other than that in which it is published and without a similar condition including this condition being imposed on the subsequent purchaser.

www.triestepublishing.com

EDWARD ALBERT SCHÄFER & GEORGE DANCER THANE

**QUAIN'S ELEMENTS OF
ANATOMY. IN
THREE VOLUMES.
VOLUME I - PART I**

QUAIN'S
ELEMENTS OF ANATOMY

EDITED BY

EDWARD ALBERT SCHÄFER, F.R.S.
PROFESSOR OF PHYSIOLOGY AND HISTOLOGY IN UNIVERSITY COLLEGE, LONDON,

AND

GEORGE DANCER THANE,
PROFESSOR OF ANATOMY IN UNIVERSITY COLLEGE, LONDON.

IN THREE VOLUMES.

VOL. I.—PART I.

EMBRYOLOGY

By PROFESSOR SCHÄFER.

ILLUSTRATED BY 200 ENGRAVINGS, MANY OF WHICH ARE COLOURED.

REPRINTED FROM THE
Tenth Edition.

LONGMANS, GREEN, AND CO.

LONDON, NEW YORK, AND BOMBAY

1896

[All rights reserved]

Qm
23
Qs
1893
v.1
pt.1

12281

Miss Lillian Herzog

MOZ
LIBRARY

APR 18 1891

HARVARD
UNIVERSITY
LONDON:
DEALERS, AGENTS, & CO. LD., PRINTERS, WESTMINSTER

CABOT SCIENCE LIBRARY

REJECTED FROM
CABOT SCIENCE LIBRARY

CONTENTS OF PART I.

	PAGE		PAGE
INTRODUCTION :		Segmentation of the Body	2
GENERAL CONSIDERATIONS	1	Homology	4
Plan of Organisation	2	Symmetry of Form	4
The Vertebrate type	2	Descriptive terms	4

EMBRYOLOGY.

<p>STRUCTURE OF OVARIAN OVUM ; MATURATION OF OVUM 6, 9</p> <p>Formation of Polar Globules 9</p> <p>Fertilization 11</p> <p>Meaning of Polar Globules 12</p> <p>Theory of Minot 12</p> <p>Theory of Weismann 14</p> <p>Recent Literature of the Ovum 14</p> <p>SEGMENTATION OF THE OVUM ; FORMATION OF THE BLASTODERM 16, 17</p> <p>Gastrula Condition of the Vertebrate Ovum 21</p> <p>Views concerning the Gastrulation of Vertebrates 22</p> <p>Inversion of Blastodermic Layers in some Mammals 23</p> <p>Historical view of Blastoderm 23</p> <p>Characters of the Blastodermic Layers 24</p> <p>Parablast theory of His 25</p> <p>Mesenchyma theory of Hertwig 26</p> <p>Recent Literature of Blastoderm 27</p> <p>EARLY CHANGES IN BLASTODERM 30</p> <p> Neural Canal 30</p> <p> Notochord 32</p> <p> Separation of the Embryo 34</p> <p> Cleavage of Mesoblast 36</p> <p> Formation of Body Cavity 36</p> <p> Formation of Mesoblastic Somites 36</p> <p> Cerebral Vesicles 37</p> <p> Heart and Vascular System 38</p> <p> Recent Literature of Early Changes in Blastoderm 41</p> <p>DEVELOPMENT OF THE FETAL MEMBRANES ; ATTACHMENT OF OVUM TO UTERUS 42</p> <p>Formation of the Amnion and Chorion 42</p> <p>Formation of the Allantois 43</p> <p>Changes in the Uterus and mode of attachment of Ovum to Uterus 46</p> <p>The Placenta 53</p> <p>Separation of the Decidua at birth, and regeneration of the Uterine Mucous Membrane 55</p> <p>Recent Literature of the Decidua 55</p> <p>DEVELOPMENT OF THE NERVOUS SYSTEM 57</p> <p> Of the Spinal Cord 57</p> <p> Of the Brain 61</p>	<p>Further details regarding the development of special parts of the Brain 63</p> <p>The fifth cerebral vesicle : Bulbar vesicle or Metencephalon 63</p> <p>The fourth cerebral vesicle : Cerebellar vesicle or Epencephalon 66</p> <p>The third cerebral vesicle : Mesencephalon : Mid-brain 67</p> <p>The second cerebral vesicle : Thalamencephalon 67</p> <p>The first cerebral vesicle : Prosencephalon 68</p> <p>The Olfactory Lobes 71</p> <p>Formation of the Fissures and Convolution 71</p> <p>DEVELOPMENT OF THE NERVES 73</p> <p> Spinal nerves 73</p> <p> Cranial nerves 73</p> <p> Optic nerves 75</p> <p> Olfactory lobe 79</p> <p> Sympathetic nerves and ganglia 81</p> <p> Recent Literature of the development of the Nervous System 81</p> <p>DEVELOPMENT OF THE EYE 83</p> <p> Of the Retina 86</p> <p> Of the Lens 86</p> <p> Capsule of the Lens 87</p> <p> Vitreous humour 87</p> <p> Corneal epithelium 87</p> <p> Sclerotic 88</p> <p> Choroid coat 88</p> <p> Accessory structures 89</p> <p> Lachrymal gland 89</p> <p> Lachrymal canals and ducts 89</p> <p>DEVELOPMENT OF THE EAR ; THE LARYNX 89</p> <p> Accessory parts of the Organ of Hearing, External and Middle Ear 93</p> <p>DEVELOPMENT OF THE NOSE 95</p> <p> Recent Literature of the development of the Sense Organs 98</p> <p>DEVELOPMENT OF THE ALIMENTARY CANAL 99</p> <p> Of the Mouth and parts in connection with it 99</p> <p> Pharynx 101</p> <p> Tongue 102</p> <p> Oesophagus, Stomach, and Intestines 103</p> <p> The Mesentery 104</p> <p> The Spleen 106</p>
--	--

	PAGE		PAGE
Formation of the Anus	108	Destination of the fourth and fifth Arterial Arches	150
FORMATION OF THE GLANDS OF THE ALIMENTARY CANAL	109	Development of the principal Veins	151
The Lungs	109	Peculiarities of the fetal Organs of Circulation	155
The Trachea and Larynx	110	The Foramen Ovale	155
The Thyroid Body	111	The Eustachian Valve	155
The Thymus	111	The Ductus Arteriosus	156
The Liver	112	The Umbilical Vessels	156
The Pancreas	113	Course of the blood in the Fetus	156
Recent Literature of the development of the Alimentary Canal and Glands	113	Changes in the Circulation at Birth	157
DEVELOPMENT OF THE URINARY AND GENERATIVE ORGANS	115	The Lymphatic System	157
The Wolffian duct and body	117	Recent Literature of the development of the Vascular System	158
Supra-renal Capsules	120	DEVELOPMENT OF THE SEROUS CAVITIES AND OF THE MUSCLES AND SKELETON	159
The permanent Kidneys	122	The Serous Cavities	159
The Urinary Bladder	122	Development of the Muscles	159
The Mullerian duct	122	Formation of the head Muscles and evidences of head segmentation	161
The Germinal Epithelium	124	Development of the Vertebral Column	162
Development of the Ovary	124	Ribs and Sternum	163
Of the Testicles	125	The Limbs	163
Descent of the Testicles	126	The Cranium	165
The External Organs	127	Formation of the visceral skeleton of the Head; cartilaginous bars of the visceral arches	166
Table of Generative Organs	130	Formation of the Auditory Ossicles	167
Recent Literature of the development of the Urinary and Generative Organs	132	Recent Literature of the development of the Serous Cavities, Muscles, and Skeleton	169
FORMATION OF THE VASCULAR SYSTEM	134		
Development of the Heart	134		
Peculiarities of the Fetal Heart	146		
Development of the principal Arteries	146		

ELEMENTS OF ANATOMY.

INTRODUCTION

ANATOMY, in its most extended sense, is the science which deals with the structure of organized bodies. It is divided into departments according to its subjects; such as Human Anatomy; Comparative Anatomy, or the study of the structure of different animals; and Vegetable Anatomy, comprehending the structure of plants.

On examining the structure of an organized body, we find that it is made up of members or *organs*, by means of which its functions are executed, such as the root stem and leaves of a plant, and the heart, brain, stomach and limbs of an animal; and farther, that these organs are themselves made up of certain constituent materials named *tissues* or *textures*, such as the cellular, woody, and vascular tissues of the vegetable, or the osseous, muscular, connective, vascular, nervous, and other tissues, which form the animal organs.

Most of the tissues occur in more than one organ, and some of them indeed, as the connective and vascular, in nearly all, so that a multitude of organs, and these greatly diversified, are constructed out of a small number of constituent tissues; and parts of the body, differing widely in form, construction, and uses, may agree in the nature of their component materials. Again, as the same tissue possesses the same essential characters in whatever organ or region it is found, it is obvious that the structure and properties of each tissue may be made the subject of investigation apart from the organs into whose formation it enters.

The foregoing considerations have led to the subdivision of anatomy into two branches, the one of which, under the name "General Anatomy," or "Histology," treats of the minute structure of the component tissues of the body; the other, named "Special or Descriptive Anatomy," treats of its several organs, members, and regions, describing the outward form and internal structure of the parts, their relative situation and mutual connection, and the successive conditions which they present in the progress of their formation or development.

To the description of the origin and formation of organs in the embryo, a special chapter is devoted in this work, under the name Embryology.

The study of anatomy may be viewed in two different aspects; viz., the physiological and the morphological. In the former, anatomy supplies the materials relating to structure from which an explanation is sought of the uses or functions of organs by the physiologist; and for this purpose the study of histology is of particular service. In its morphological aspect, anatomy investigates and combines the facts relating to the structure and relations of organs, from which may be deduced general principles as to the construction of the human body or that of

animals. In the determination of these general principles, or laws of morphology, it is necessary to combine the knowledge of the anatomy and development of animals with that of man.

PLAN OF ORGANIZATION.

Vertebrate type.—The general plan of construction of the human body agrees closely with that which prevails in a certain number of animals, viz., mammals, birds, reptiles, amphibia, and fishes, and is known as the vertebrate type of organization. The main feature of that type, and that from which its name is derived, belongs to the internal skeleton, and consists in the existence of a median longitudinal column, which extends through the whole trunk, and is composed in the fully developed state of a series of bones termed *vertebrae*. This *vertebral column* is formed in the early embryo around a simple rod-like structure, the primitive skeletal axis, which is called the *notochord*, and which in most vertebrate animals disappears to a greater or less extent in the course of development. The more solid portions of the *vertebrae* immediately surrounding the notochord are known as the *bodies or centra* (figs. 2 and 3), and constitute a pillar around which the other parts are grouped with a certain regularity of structure. At one extremity of this pillar is situated the *head*, showing in almost all the animals formed upon this type a greater development of its constituent parts; and at the other the *tail* in which an opposite character or that of diminution prevails; while on the sides of the main part or *trunk*, there project, in relation with some of the vertebral elements, two pairs of symmetrical *limbs*.

The head and trunk contain the organs or viscera most important to life, such as the alimentary canal and the great central organs of the vascular and nervous systems, while the limbs, from which such principal organs are absent, are very variable and differ widely in the degree of their development among the various animals formed upon the vertebrate type. In man and the higher animals the trunk is divisible into neck, chest, abdomen, and pelvis.

The vertebrate form of skeleton is invariably accompanied by a determinate and conformable disposition of the other most important organs of the body, viz.:—*firstly*, the existence on the dorsal aspect of the vertebral axis of an elongated cavity or canal which contains the brain and spinal cord, or central organs of the nervous system; and *secondly*, the existence on the ventral aspect of the vertebral axis of a larger cavity, the visceral cavity, body cavity or *coelom*, in which are contained the principal viscera connected with nutrition and reproduction, such as the alimentary canal, the heart and lungs, the great blood-vessels, and the urinary and generative organs.

The general disposition of the parts of the body and of the more important viscera in their relation to the vertebral axis are shown in the accompanying diagrams of the external form and longitudinal and transverse sections of the human embryo at an early period of its existence.

Segmentation of the body.—The vertebrate type of organization in the repetition of similar structural elements in a longitudinal series, has a segmented character, especially in the axial portion of the body, and this segmentation affects more or less, not merely the skeletal parts of its structure, but also, to some extent, its other component organs.

A segmented plan of construction is by no means restricted to vertebrate animals, but exists in several other classes of the animal kingdom, as is most conspicuously seen in the Arthropoda, such as insects and crustacea, and in the Annelida or worms. These animals, however, although showing a serial repetition of parts of like structure, are not considered to belong to the vertebrate type of organization.

In the human embryo, as in that of all vertebrate animals, the segmentation is most marked in the muscular system, the nervous and osseous systems becoming for the most part correspondingly marked off: in the adult the osseous and nervous systems retain in great measure the segmentation which has thus been produced, although in the muscular system it has

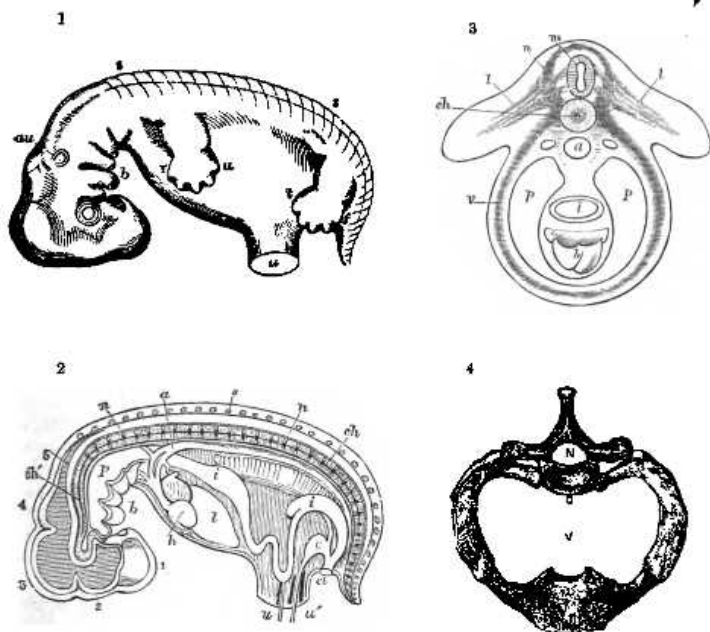


Fig. 1.—DIAGRAM OF AN EARLY HUMAN EMBRYO. (Allen Thomson.)

r, s, indications of the vertebral divisions along the line of the back; *r, u*, upper limb; *t, f*, lower limb; *u*, umbilical cord. In the cranial part the divisions of the brain are indicated, together with the eye, and *au*, the auditory vesicle; near *b*, the visceral arches and clefts of the head, forming *inferalia* the rudiments of the upper and lower jaws.

Fig. 2.—SEMI-DIAGRAMMATIC VIEW OF A LONGITUDINAL SECTION OF THE EMBRYO REPRESENTED IN FIGURE 1; SHOWING THE RELATIONS OF THE PRINCIPAL SYSTEMS AND ORGANS. (Allen Thomson.)

1, 2, 3, 4, 5, primary divisions of the brain in the cranial part of the neural canal; *n, n*, spinal cord in the vertebral part of the canal; *s*, spinous process of one of the vertebrae; *ch*, chorda dorsalis running through the axis of the vertebral centra; *ca'*, the same extending into the base of the cranium; *a*, dorsal aorta; *p*, pharyngeal cavity; *t, i*, alimentary canal; *h*, ventricular part of the heart, with which the arterial bulb is seen joining the aorta by arches; *b*, visceral arches of head; *l*, liver; *w*, Wolfian body; *v*, urinary vesicle or allantois, joining the intestines in the cloaca, *cl*; *u, u'*, umbilicus.

Fig. 3.—TRANSVERSE SECTION (DIAGRAMMATIC) OF THE TRUNK OF THE EMBRYO THROUGH THE UPPER LIMBS. (Allen Thomson.)

nc, spinal cord; *na*, neural or dorsal arch, including bone, muscle, skin, roots of the nerves, &c.; *ca*, chorda dorsalis, surrounded by the vertebral body or centrum; *v*, ventral or visceral arch, or wall of the body; *p, p*, body cavity; *i*, alimentary canal; *h*, heart; *l, l*, the rudimentary limbs.

Fig. 4.—FIRST DORSAL VERTEBRA WITH THE FIRST RIB AND UPPER PART OF THE STERNUM, SEEN FROM ABOVE. $\frac{1}{2}$.

C, centrum; *N*, neural cavity; *V*, cavity of the chest, visceral cavity.